

2018 ANNUAL REPORT



Creating Opportunities for Good

This Annual Report is Dedicated  
to the Memory of  
Bryan P. Bowerman (1942-2018)

**Main Street**  
COMMUNITY FOUNDATION



We dedicate this Annual Report to the memory of **Bryan P. Bowerman (1942-2018)** in grateful recognition of his vision and leadership while serving on the Board of Directors for the Main Street Community Foundation.

A Bristol native and lifelong resident, who served on the MSCF Board of Directors for 10 years, Bryan Bowerman passed away on November 11, 2018.

Bryan worked most of his life in banking, retiring in 2008 as the President of Farmington Savings Bank. Yet his real passion was helping people and his community. He served on the governing boards of many institutions and organizations, including Tunxis Community College, Wheeler Clinic, Bristol Hospital, Mutual Investment Fund of Connecticut and Main Street Community Foundation.

Here at the Community Foundation, he led the Board of Directors as Chairman from 2007 – 2009 and had previously served as Vice Chairman and Secretary. He sat on every standing committee at some point during his ten-year involvement with the Foundation. And his generosity knew no bounds, including supplying funds for a much-needed laptop for the new CEO in 2008 and a new copier for the office, providing financial support for various receptions, and creating the Bowerman Scholarship Fund for future business students graduating from Bristol Eastern High School, the same school that Bryan attended.

Bryan may be gone but his legacy will always live on at the Main Street Community Foundation and in the communities that Bryan cared so much about.

## HIGHLIGHTS OF 2018

**\$40.9 million** in total assets

**\$1.4 million** in contributions received

**\$1.7 million** awarded in grants and scholarships to our community

**237 funds** established since 1995

**200+ volunteers** supporting the Main Street Community Foundation

Recognized with an All Star Award from the United Way of Southington for MSCF's efforts in improving the lives of Southington residents and honored by the Bristol Veteran's Council for dedication to assisting the veterans' community.

### OUR VISION

To be widely recognized as the comprehensive center for leadership and philanthropy in the communities of Bristol, Burlington, Plainville, Plymouth, Southington and Wolcott.

### OUR MISSION

To enhance the quality of life for both present and future generations in the communities we serve. We accomplish our mission by encouraging and promoting:

- Gift Planning
- Prudent Stewardship of Assets
- Effective Grantmaking
- Community Leadership

### OUR CORE VALUES

Excellence, Integrity, Inclusiveness and Transparency in all we do.



GIFT PLANNING

page 4 - 9

EFFECTIVE GRANTMAKING

page 10 - 17

COMMUNITY LEADERSHIP

page 18 - 20

STEWARDSHIP OF ASSETS

page 21 - 37

GOVERNANCE

page 38

FINANCIAL STATEMENTS

page 39

**This annual report is our opportunity to share with you the stories of our donors and their investments in your community.**



Marguerite P. Fletcher  
*Chair of the Board*

Susan D. Sadecki  
*President & CEO*

## *A Message to Our Neighbors*

**Creating Opportunities For Good** is at the heart of the Main Street Community Foundation. Our mission is to help individuals, families and businesses fulfill their charitable goals and create lasting impact so your communities can thrive. It is our responsibility to match the resources entrusted to us to meet the changing needs of the Connecticut communities of Bristol, Burlington, Plainville, Plymouth, Southington and Wolcott.

We are the most comprehensive philanthropic organization serving the residents and neighbors of your communities. Stewarding nearly \$41 million in assets at 12/31/18 composed of over 237 named funds, the Foundation has awarded \$17.3 million in grants and scholarships since its establishment in 1995.

Our continuous adherence to sound financial practices led to an unqualified audit opinion of our 2018 financials from the accounting firm blumshapiro. We are confirmed in compliance with the National Standards for U.S. Community Foundations, a distinction we have held for over thirteen years.

We continue to be committed to a strategic plan approved by our Board of Directors that sets forth three important priorities: 1) Building Recognition/Visibility; 2) Engaging the Next Generation; and 3) Growing the Endowment to Fuel Investments in Your Local Community. Dependent on

volunteer leadership to fulfill our mission, those who serve on our Board of Directors and committees expand our community philanthropic efforts by sharing their individual and collective knowledge and expertise. In early 2019, board leadership changed as chairperson John Scarritt passed the gavel to Margi Fletcher. We bid farewell to highly respected board members Todd Burton, John Letizia and Byron Treado. To each and all, we are very grateful for their generous donation of time, talents and community insight.

The end of 2018 brought change to our internal operations with the promotions of Kate Kerchaert to Director of Grants & Programs and Samantha Rajotte to Scholarship & Program Officer. We celebrated the retirement of Jarre Betts from her position as Vice President of Grants and Programs after an 18-year legacy of community impact through her tireless work at the Foundation and throughout the region. Please read more about her family's lasting legacy on page 22 of this report.

We are forever grateful to the many caring people who have created a community foundation that is significant. This annual report is our opportunity to share with you the stories of our donors and their investments in your community. It is also an opportunity to recognize the collective philanthropy of all and to invite you to join with us, so together we can keep on **Creating Opportunities For Good** that will have a lasting impact – forever.



## *Gift Planning*

Since our founding in 1995, endowed gifts and bequests have been the cornerstone of charitable contributions to the Main Street Community Foundation. Each of the following funds established in 2018 reflect a donor's interest or philanthropic objective to leave a legacy and make a difference in one or more of the communities we serve – Bristol, Burlington, Plainville, Plymouth, Southington and Wolcott.

# Funds Established in 2018

John R. Petrucelli



Bristol Preschool Child Care Center, Inc.



## EARLY LEARNING – A PET PROJECT FUND

Early Learning - A PET Project Fund, a designated fund, was established by Mary-Alice Petrucelli-Timek to honor the memory of her brother, John R. Petrucelli. A Meriden native and New Jersey resident, John possessed a unique sense of humor, able to make everyone around him smile and engage in discussion. His love of learning through exploration and play was evident as a young boy as he would take apart then put together any mechanical or electronic device. As a young man and before he entered college, he started his first company, PET Projects. As an adult, he was an amazing sound engineer and was well known for his work in the industry. He was an inventor with many of his designs still in use. In addition to his design work, he always took the time to mentor other engineers.

This fund will continue John's legacy for always thinking of others before himself, and instilling the love of learning in young minds through grants to benefit programs and general operations at Bristol Preschool Child Care Center, Inc. of Bristol, CT and Imagine Nation, A Museum Early Learning Center of Bristol, CT.



Imagine Nation, A Museum Early Learning Center



## HANDS-ON FUND

This field of interest fund will provide opportunities for school-age children living in or attending school in Southington to experience non-sport, noncompetitive programs and activities. Grants from this fund will support programs and activities that could include the fine arts, visual arts, performing arts, industrial arts, domestic arts and sciences, arts and crafts, noncommercial agricultural science or noncommercial animal husbandry. Grants will also support programs and activities that promote personal wellness, personal enrichment and/or personal skills. This fund has been established by donors who wish to remain anonymous.



The Moreau Family

## KALT MOREAU FAMILY SCHOLARSHIP FUND FOR EDUCATION

Susan Kalt Moreau, Ph.D., former\* Superintendent for the Bristol Public Schools, created the Kalt Moreau Family Scholarship Fund together with her family to pay it forward in recognition of what others did for her. This scholarship fund will help to further the post-secondary educational goals for female graduating seniors from Bristol Central High School or Bristol Eastern High School pursuing a career in education. The scholarship will be awarded annually on a rotating schedule between the two high schools.

*\*as of June 30, 2019*



Paul Maskery

## MASKERY FAMILY SCHOLARSHIP FUND

Paul Maskery established this fund to honor his family and give back to the students of Farmington and Plainville. Paul, who grew up in Plainville, was a long time teacher, coach and Athletic Director at Farmington High School. Scholarships from this fund will advance the post-secondary education of graduating high school seniors from either Farmington High School or Plainville High School.

**Remember that the happiest people are not those getting more, but those giving more.**

*H. Jackson Brown Jr.*

# Funds Established in 2018



Dave Mongillo

## DAVE MONGILLO MEMORIAL/GOLF SCHOLARSHIP FUND

Dave Mongillo was a fixture in the Southington community and has been described as fearless, strong, generous, humble, humorous, warm and unrelentingly dedicated. This scholarship fund was established by friends and family to honor Dave's memory after he passed away in 2017. Dave was often referred to as the King of Concrete, dedicating most of his life to his own foundation business. He was highly regarded in the industry as a master craftsman known for his work ethic, quality and attention to detail. Dave was an avid golfer who enjoyed playing rounds of golf with his friends as a proud member of the Southington Weed Wackers Golf League. This scholarship is available to a graduating high school senior from Southington High School who is a current member of the school's golf team; preference will be given to those who will continue to play golf at the college level.



## NUTMEG SYMPHONY ORCHESTRA EDUCATIONAL ACTIVITIES FUND

The Nutmeg Symphony Orchestra, through the power of music, energizes, inspires and educates communities throughout Connecticut. Serving Bristol and the surrounding towns, the Nutmeg Symphony Orchestra is a professional orchestra providing classical music concerts and musical services, while collaborating with local schools to strengthen music programs through performance.

This designated fund will provide annual support to the Orchestra for the purpose of planning, organizing and performing educational concerts designed for child audiences, primarily third grade level, chamber music programs in schools (all grades) and other collaborative educational and musical activities including but not limited to promoting participation in school and community music programs and other endeavors.



## SOUTHINGTON ARTS COUNCIL LEGACY FUND

The Southington Arts Council retired its operations in 2018 and established this field of interest fund as a legacy to the community of Southington. During its 36 years of operation, the Southington Arts Council worked diligently to build community awareness for and participation in the cultural opportunities in Southington. The Southington Arts Council was founded in 1982 by Carole S. Milano in order to make the cultural arts accessible to the residents of Southington. Grants from this fund will support programs and organizations for the promotion and appreciation of artistic and cultural opportunities that will benefit the community of Southington, including visual, performing, creative writing and holistic arts opportunities.

GIFT PLANNING

## PAT & BOB WOLLENBERG FAMILY FUND FOR THE COMMUNITY

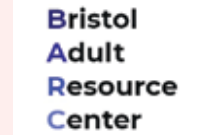
This unrestricted community fund was established by longtime Bristol residents Pat and Bob Wollenberg to support the emerging and changing needs of the communities served by the Foundation. They have always enjoyed the cultural aspect of living in Bristol and their children were involved in performance arts throughout their school years and beyond. To honor their interest in the arts, preference will be given to organizations in support of the fields of music, theater and the performing or visual arts.



Pat and Bob Wollenberg

## PAT & BOB WOLLENBERG FUND FOR BRISTOL ADULT RESOURCE CENTER

Bristol residents Pat and Bob Wollenberg established this designated fund in support of the Bristol Adult Resource Center, Inc. (BARC) of Bristol, CT. BARC is dedicated to helping Bristol's adults with intellectual and developmental disabilities maximize their independence and inclusion in their community. Annual grants will aid the organization's capital projects and capital repairs.



## PAT & BOB WOLLENBERG FUND FOR OPPORTUNITY HOUSE

Established by Bristol residents Pat and Bob Wollenberg, this designated fund will provide support to Opportunity House, Inc. of Hamden, CT. Opportunity House provides residential and day service programs for adults within the autism spectrum. An annual grant will support the organization's employee appreciation program.



## PAT & BOB WOLLENBERG SCHOLARSHIP FUND FOR SPECIAL EDUCATION

Pat and Bob Wollenberg's philanthropic interests are rooted in personal experience. Understanding the impact of autism through a family member and Pat's involvement in education, they decided to establish a scholarship fund to assist students pursuing undergraduate and graduate degree programs in Special Education. Scholarships will be awarded annually to graduates of Bristol Central High School, Bristol Eastern High School or St. Paul Catholic High School.



# Becoming a Donor/Establishing a Fund

There are many ways to donate to Main Street Community Foundation to support worthwhile charitable organizations and causes in our service area of Bristol, Burlington, Plainville, Plymouth, Southington and Wolcott, Connecticut. The Foundation offers a range of personalized services to help donors fulfill their charitable goals. As partners in philanthropy, we work with each donor to establish a fund or gift plan without complex administrative burdens.

## Give to an existing fund

You can support the Foundation's ongoing work with an unrestricted gift of any amount. Contributions can also be made to any of the Foundation's permanent endowment funds which benefit a diverse range of charitable purposes.

## Establishing a new fund

Our donors are individuals, families, companies and charitable organizations. You can establish a fund using a variety of gift giving vehicles, including: cash, stock, retirement assets, other tangible personal property, bequests and other planned gifts. Most new endowment funds can be established with a minimum donation of \$10,000; to establish a new scholarship fund, the minimum is \$25,000. This gift can be given as a lump sum or over a period of time during

your life. You may also leave charitable assets upon your passing in the form of a bequest in will or trust, retirement plan designations or beneficiary designation in a life insurance policy. A fund can be established as a permanent endowment or as a temporary fund in which income and principal will be distributed.

## Donor Services

The Main Street Community Foundation provides permanent, professional administration of charitable funds without the expense or effort of establishing a private foundation. All assets are professionally managed with oversight by the Investment Committee and Board of Directors. There is no cost to establish a fund. There is a modest management fee which supports the administrative operations of the Foundation.

Your benefits include:

- Choice of fund type and fund name
- Grant making support and counsel
- Administration of gifts and grants
- Maximum tax advantages allowed by law
- Prudent investment management
- Permanent recognition or anonymity at donor's discretion

## Additional Services:

The Foundation can assist private foundations or other grant making institutions in a variety of ways that include:

- Administration of grant making programs
- Project review for funding consideration
- Advisement on community needs and priorities
- Assistance to private foundations to meet pay-out requirements

## Our flexible fund options include:

### Unrestricted Community Funds

Flexible and responsive to emerging and changing community needs. You place no restrictions on your gifts and leave decisions about charitable use of the funds to the Foundation.

### Field of Interest Funds

You have the opportunity to support a broad category of need such as the arts, healthcare, education, environment or a specific geographic area. Grant recipients are selected by the Foundation's Distribution Committee.

### Donor Advised Funds

You participate actively in grantmaking by suggesting charitable organizations to receive grants. Foundation staff assists you by researching grant requests and connecting you with potential grant recipients.

### Designated Funds

You designate support for a specific charitable organization. If the named charity ceases to exist, another organization with a similar purpose is selected by the Foundation's Board of Directors to ensure your purpose for giving will be honored in perpetuity.

### Agency Endowment Funds

Established by a nonprofit organization as a means of protecting their charitable dollars for the future and to ensure an annual source of support for their programs and operations.

### Scholarship Funds

You can establish a named fund for any level of education. You may designate a particular school, field of study and select eligibility criteria.

### Sustainability Funds

You make permanent gifts that strengthen the Foundation's role as a funder, a community leader, convener and advocate.

# Leaving a Legacy Through Bequests and Planned Giving



The Main Street Community Foundation is built on the dreams and desires of people who are part of the Foundation's service area. For some people, the desire to create a legacy comes during their life as a current gift. For others, these legacies are shaped by the donor as future bequests or planned gifts.

And still at other times, a celebratory or tragic event, such as a retirement or sudden death, will be the impetus for honor or memorial gifts that may be used as the beginning of an endowed fund in a loved one's name. Large or small, all of these gifts will enhance the quality of life in your community for generations to come.

If you have included the Main Street Community Foundation in your estate plan and would like to be included in the Main Street CornerStone Society, please contact the Foundation office at 860.583.6363.

A cornerstone provides a strong support to a structure for its future stability. Laying this groundwork for the future is critical. Like this permanent support, CornerStone Society members lay the groundwork for the organizations and causes they care about most, and the future stability of the Foundation.

The opportunity to give later is simple. You can leave a bequest to the Main Street Community Foundation for the causes you care about in a will or trust, through a retirement plan designation, life insurance beneficiary designation, remainder interest in real estate, or other planned giving vehicles.

GIFT  
PLANNING

## CornerStone Society Members

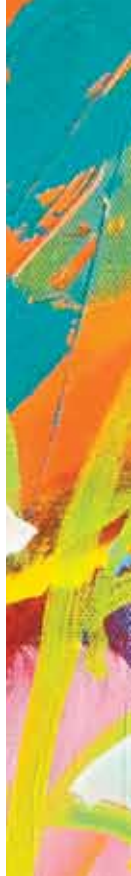
We are pleased to recognize the following very generous individuals who have made or have communicated their plans to leave a gift to the Foundation in their will, estate plan or some other deferred gift.

Anonymous 1	Whit & Jarre Betts	David Greenleaf	Kevin Prior
Anonymous 2	Robert C. Boudreau	Bill & Anita Hamzy	Jeanne Radcliff
Anonymous 3	Marjorie E. Budge	Hal Kilby	Daniel* & Patricia Saccu
Anonymous 4	Ken Burns	David Kushlan	Noreen Schumann
Anonymous 5	Robert & Rebecca Caiaze	Laura Schlesinger Minor	John E. Smith
Anonymous 6	Father Salvatore Cavagnuolo	Janis Neri	Bill & Kim Tracy
Anonymous 7	Dr. Ann Clark	Robert & Ella Mae Packard	Karen Ann Varasconi
Robert J. Alim	Raymond* & Lorraine Corsini	Richard E. & Margaret W. Palarczyk	Dr. Joan T. Wallace
Carlyle* & Elizabeth Barnes	Roland & Shirley* Dumont	Lynne M. Peters	
Tom & Melanie Barnes	Terry & Marguerite Fletcher	David & Kathy Preleski	<i>*deceased</i>
Sidney M. Bernard* & Edward J. Miller	Mark & Michelle Gibson		

## Bequests Fulfilled

Irene Brzezinski	Elizabeth I. Matt	Eva M. Pierce	Peter S. Saman
Mark M. Keating	Robert & Carmen Merriman	Don & Betty Radcliff	Glo Sessions
Richard Lass	Al & Joan Monico	David Reidy	Elizabeth M. Tyrrell





GIFT  
PLANNING

## LEGACY: Donald & Betty Radcliff

When Betty, the daughter of a dairy owner, and Donald (Don), a World War II veteran, married in 1950, it would have been difficult for them to imagine the ripple effect their union would have up through 2018 and beyond. Yet from the beginning, they laid the groundwork for their legacy to have a permanent impact in our community.

In 1959, Don started his own business — Radcliff Wire, Inc. — with the help of Betty. This business, which will celebrate its 60th anniversary next year, was just one of the successes that Don and Betty had in their life. The other was their family — they had five children, seven grandchildren and eight great-grandchildren. Jeanne Radcliff, Don and Betty's eldest daughter who would one day succeed her father as President of Radcliff Wire, had this to say about her parents instilling a sense of generosity in their family: “[My mother] was a stay-at-home mom with five children but she volunteered to help out for everything, from Scouts, to sports, to school and church activities. I think we all learned that if you want to make something happen, then you need to invest some time and energy, and if you have the resources, financial support.”

The Radcliffs believed that hard work and a good education could help dreams come true. As Jeanne said, “[My father] never had the opportunity to go to college and even after running a successful business, he still regretted it. So they ensured that all of their children would have that opportunity and then went beyond to provide for their grandchildren and great-grandchildren.”

Susan Sadecki, President & CEO of Main Street Community Foundation, added, “They then went even further and through the Main Street Community Foundation, left their legacy for people that they may never get to meet.” How did the Radcliffs do that? By establishing two scholarship funds with an IRA charitable rollover gift. The **Radcliff Family Education Fund** and the **Radcliff Plainville High School Fund** provide renewable scholarships to support hard-working students who have big dreams but need financial assistance to realize them. To date, these scholarships have awarded over \$250,000 to deserving students in the communities of Bristol and Plainville. The two scholarship funds were increased further upon Betty's passing as the Foundation was named a direct beneficiary on several IRAs.

Don passed away in 2013 and Betty this past June. But their legacy lives on — in their children, their grandchildren, and their great-grandchildren. In the 25 scholarship recipients thus far who have had the opportunity to go to college because of them. In the Bristol and Plainville communities through the people they've employed at Radcliff Wire and the help they've given those families. In the Main Street Community Foundation, as members of the CornerStone Society who have laid the groundwork for the future stability of this organization and our surrounding communities. As Susan Sadecki said, “When I think of the word legacy, I can't help but think of the Radcliff Family.”





### **ARTS IN THE PARK**

During the Bristol Parks & Recreation's 2018 Summer Concert Series at Rockwell Park, **Arts in the Park** provided hands-on art programs to children who attended the Concert Series. This program was supported by a grant from the Sid Bernard & Ed Miller Children's Fund for the Visual Arts, which was established in 2013 to benefit programs or projects that teach children innovative or traditional art skills.

## *Effective Grantmaking*

The Main Street Community Foundation welcomes grant applications from nonprofit organizations serving the Connecticut communities of Bristol, Burlington, Plainville, Plymouth, Southington and Wolcott. Grants are made in the fields of Arts & Culture, Community Development & Outreach, Education, Health, Human Services, Environment, Animal Welfare and Youth Development. Application guidelines are available for each grant program at [www.mainstreetfoundation.org](http://www.mainstreetfoundation.org).

The distribution process for grants from Money in Motion, Immediate Response and Donor Advised funds continues throughout the year as requests or special initiatives are presented to the Foundation. Scholarships are available to individuals pursuing educational and career opportunities in a variety of areas and at varying levels of education and training.

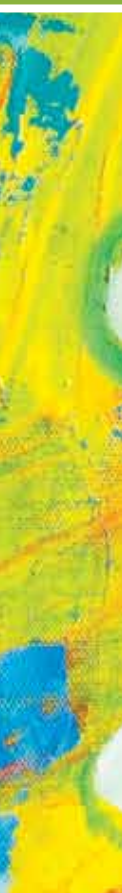
# 2018 Grants Awarded

In 2018, Main Street Community Foundation has distributed **\$1,711,651** in grants and scholarships to support many worthy causes and organizations in your communities.

<b>MONEY IN MOTION GRANTS</b>	<b>\$12,000</b>	<b>Bristol Board of Education/ Gifted Program</b>	\$1,000	<b>City of Bristol</b>	\$500
<b>Bristol Hospital Development Foundation</b>	\$10,000	Annual Poetry Night for middle and high school students in the gifted program <i>Pat &amp; Bob Wollenberg Family Fund for the Community</i>		Arts in the Park show in conjunction with Bristol Parks & Recreation's Summer Concert series <i>Sid Bernard &amp; Ed Miller Children's Fund for the Visual Arts</i>	
<b>DataHaven</b>	\$2,000	<b>Bristol Board of Education/Bristol Eastern High School</b>	\$2,500	<b>Community Health Network of CT Foundation</b>	\$4,600
Support Community Wellbeing survey for Bristol		Collaborative concert with Bristol Eastern High School Choral department and the Nutmeg Symphony Orchestra <i>Pat &amp; Bob Wollenberg Family Fund for the Community</i> <i>Margaret Haberman Memorial Fund for Music</i>		Cooking Matters for Families nutrition education program in collaboration with Bristol Hospital Parent & Child Center <i>Smith Family Charitable Fund</i>	
<b>GRANTS FROM GENERAL GRANT PROCESS</b>	<b>\$126,473</b>	<b>Bristol Family Resource Center</b>	\$4,000	<b>Connecticut Radio Information System (CRIS) Inc.</b>	\$2,500
<b>American Clock &amp; Watch Museum</b>	\$500	People Empowering People (PEP) program to teach parents to become community leaders <i>Fuller and Myrtle Barnes Fund for Education</i>		Audio Accessibility via internet radio for adults who are blind or visually impaired <i>Bristol Savings Bank Fund</i>	
Installation of antique Seth Thomas street clock on museum property <i>Jay &amp; Elizabeth Tyrrell Fund for the Arts</i>		<b>Bristol Girls Little League Softball</b>	\$8,810	<b>Connecticut Rivers Council Boy Scouts</b>	\$2,400
<b>American Red Cross</b>	\$5,000	Purchase field maintenance equipment and storage sheds <i>Malerbo Children's Field Maintenance Fund</i>		STEM scouting after-school program for Bristol elementary school students <i>Bristol Brass General Grant Fund</i> <i>Angela and Al Caruso Family Charitable Fund</i> <i>JoAnn &amp; David Mills Family Fund</i>	
Disaster Response and Relief Services including the Home Fire Campaign in Bristol, Burlington, Plainville, Plymouth, Southington and Wolcott <i>Bristol Brass General Grant Fund</i> <i>Gnazzo/Reidy Charitable Fund</i> <i>Jaspersohn Family Memorial Fund</i> <i>James R. Parker Trust</i>		<b>Bristol Historical Society</b>	\$1,000	<b>Connecticut Science Center</b>	\$1,250
<b>Boys &amp; Girls Club of Bristol Family Center</b>	\$4,000	Preservation Week community event to preserve personal and shared photos and other memorabilia <i>Edward W. and Audrey K. Mink Memorial Fund</i>		Support the STEM program in the Bristol Public schools including student field trips, in-school activities and professional development for teachers <i>Fuller and Myrtle Barnes Fund for Education</i>	
Job-readiness and career exploration program for Cambridge Park teens <i>Douglas and Noreen Schumann Special Interest Fund</i>		<b>Bristol Recovery Club</b>	\$1,920	<b>Covenant to Care for Children</b>	\$4,000
<b>Boy Scouts of America Troop #55</b>	\$500	Updated music equipment for club functions to provide a sober entertainment option <i>Bristol Savings Bank Fund</i> <i>Edward W. and Audrey K. Mink Memorial Fund</i>		Supply basic essential goods to DCF involved youth to preserve and reunify families <i>Jim &amp; Eleanor Frawley Community Fund</i> <i>Bristol Brass General Grant Fund</i>	
Purchase cooking equipment for campouts <i>James R. Parker Trust</i>		<b>Bristol School Readiness Council</b>	\$3,002	<b>Early Childhood Collaborative of Southington</b>	\$4,000
<b>Brian's Angels Homeless Outreach</b>	\$2,000	Operation HALO (Healthy Alternatives for Little Ones) pilot program for preschoolers in conjunction with the Bristol Police department and the Bristol Hospital Parent & Child Center <i>Bristol Brass General Grant Fund</i> <i>Douglas and Noreen Schumann Special Interest Fund</i>		Developing Kindergarten Readiness in Southington's young children <i>Bristol Brass General Grant Fund</i> <i>Fuller and Myrtle Barnes Fund for Education</i>	
Basic human needs for the homeless including tents, sleeping bags and shoes <i>Ciccarelli-Vitale Community Advancement Fund</i> <i>Bristol Brass General Grant Fund</i>				<b>Environmental Learning Centers of CT</b>	\$3,000
<b>Bristol Adult Resource Center</b>	\$1,000			Purchase of canoes and kayaks for Indian Rock summer camp <i>Bristol Brass General Grant Fund</i> <i>James R. Parker Trust</i>	
Update signs at two Bristol locations in conjunction with marketing campaign <i>Bristol Brass General Grant Fund</i>					
<b>Bristol Auto Club</b>	\$500				
Enhance Saturday Cruise Night by providing family entertainment, music and games <i>Bristol Savings Bank Fund</i>					

continued on next page





<p><b>Imagine Nation, A Museum Early Learning Center</b> Imagine Developing Life-Long Learners program in conjunction with Bristol Preschool Childcare Center <i>Bristol Brass General Grant Fund</i> <i>Sid Bernard &amp; Ed Miller Children's Fund for the Visual Arts</i> <i>Jay &amp; Elizabeth Tyrrell Fund for the Arts</i></p>	\$2,670	<p><b>Oak Hill/Connecticut Institute for the Blind</b> Veteran transition and support programs at Chapter 126 Sports &amp; Fitness center <i>Bristol Savings Bank Fund</i> <i>Bristol Brass General Grant Fund</i> <i>Ronald F. &amp; Emilie P. Duhaime Family Fund</i> <i>Jim &amp; Eleanor Frawley Community Fund</i></p>	\$4,500	<p><b>The Children's Museum</b> Science Achievement for All program for grades K-8 in the Bristol schools <i>Bristol Brass General Grant Fund</i></p>	\$2,500
<p><b>Junior Achievement of Southwest New England</b> Job Shadowing program for Lewis S. Mills students <i>James R. Parker Trust</i></p>	\$2,500	<p><b>Plainville Community Food Pantry</b> Support the Healthy Food Initiative including farmer's market vouchers and healthy pantry items <i>Bristol Savings Bank Fund</i> <i>Edward W. and Audrey K. Mink Memorial Fund</i> <i>Terry and Marguerite Fletcher Family Fund</i></p>	\$4,000	<p><b>United Way of West Central Connecticut</b> Community outreach and engagement for Bristol Early Childhood Alliance <i>Bristol Brass General Grant Fund</i> <i>Formagioni-Lodovico Family Fund</i> <i>Tedesco-Gallant Charitable Fund</i></p>	\$2,500
<p><b>Kelly's Kids Inc.</b> Farm animal and nature based summer camp program for DCF involved youth <i>Douglas and Noreen Schumann Special Interest Fund</i></p>	\$4,000	<p><b>Plymouth Community Food Pantry</b> Support purchase of pantry items for the Healthy Options food program <i>Bristol Brass General Grant Fund</i> <i>Bristol Savings Bank Fund</i></p>	\$4,000	<p><b>Town of Burlington Animal Control</b> Support the direct medical care of animals <i>Elizabeth I. and Louis J. Matt Animal Protection Fund</i></p>	\$500
<p><b>Lewis S. Mills Crew Booster Club</b> Support purchase of oars for racing shell <i>James R. Parker Trust</i></p>	\$2,165	<p><b>Prudence Crandall Center, Inc.</b> Teen violence prevention program at Alta at the Pyne alternative high school in Southington <i>Bristol Brass General Grant Fund</i> <i>Calvanese Foundation Green &amp; White Fund for Behavioral Health</i> <i>Eva M. Pierce Memorial Charitable Fund</i></p>	\$4,000	<p><b>Town of Plainville Animal Control</b> Support feral cat spay &amp; neuter fund and medical care of animals <i>Elizabeth I. and Louis J. Matt Animal Protection Fund</i></p>	\$1,000
<p><b>Lock Museum of America</b> Enhance exhibits through new LED lighting for display cases <i>Bristol Brass General Grant Fund</i></p>	\$1,500	<p><b>Quota International of Bristol</b> Provide new back-to-school clothing and shoes to youth in the after-school program at the Cambridge Park Boys &amp; Girls Club <i>Dumont Family Charitable Fund</i> <i>Douglas and Noreen Schumann Special Interest Fund</i></p>	\$2,500	<p><b>Town of Plymouth Animal Control</b> Support the direct medical care of animals <i>Elizabeth I. and Louis J. Matt Animal Protection Fund</i></p>	\$500
<p><b>Memorial Military Museum</b> Support purchase of acid-free boxes for protection and preservation of World War I uniforms <i>Bristol Savings Bank Fund</i></p>	\$600	<p><b>Regional School District 10/ Har-Bur Middle School</b> Purchase 12 additional seats in the Fast ForWord reading software program for struggling readers <i>James R. Parker Trust</i></p>	\$3,696	<p><b>Town of Southington Animal Control</b> Support the construction of an outdoor dog run <i>Elizabeth I. and Louis J. Matt Animal Protection Fund</i></p>	\$3,870
<p><b>New Britain Museum of American Art</b> Access to the Arts educational program for Wolcott students <i>Pat &amp; Bob Wollenberg Family Fund for the Community</i> <i>Fuller and Myrtle Barnes Fund for Education</i></p>	\$3,000	<p><b>South Side School PTA</b> Purchase 12 additional chrome books to be used by students in grades K-2 during independent learning centers <i>Bristol Brass General Grant Fund</i> <i>Fuller and Myrtle Barnes Fund for Education</i></p>	\$2,700	<p><b>Town of Southington</b> Create an open space pollinator habitat on a town-owned parcel to raise awareness about the benefits of land preservation <i>Merriman Family Fund</i> <i>Bristol Brass General Grant Fund</i></p>	\$1,500
<p><b>New Britain Museum of American Art</b> Access to the Arts educational program for Burlington students <i>James R. Parker Trust</i></p>	\$2,500	<p><b>The Agape House</b> Purchase computer equipment, phone system, and other supplies/costs related to the Life Skills Ministry for the Homeless <i>Ciccarelli-Vitale Community Advancement Fund</i> <i>Karen and Kim Murphy Family Charitable Fund</i></p>	\$1,660	<p><b>Veterans Strong Community Center</b> Improve services, assistance and communications by hiring a new part-time outreach person who will conduct outreach hours directly in the towns served <i>Bristol Brass General Grant Fund</i> <i>Paige Wartonick Laferriere Memorial Fund</i> <i>James R. Parker Trust</i> <i>Becker Family Fund</i></p>	\$5,000
<p><b>New England Carousel Museum</b> Expansion of the Music-Art-Technology-History (MATH) program for Bristol second grade public school students <i>Bristol Savings Bank Fund</i> <i>Sid Bernard &amp; Ed Miller Children's Fund for the Visual Arts</i> <i>Fuller and Myrtle Barnes Fund for Education</i></p>	\$5,000			<p><b>Wheeler Regional Family YMCA</b> First Wave Swim Lesson free program for low-income first grade students in Plainville <i>Bristol Brass General Grant Fund</i> <i>Turkus Family Fund</i></p>	\$3,000
<p><b>Nutmeg Big Brothers Big Sisters</b> Community Based Mentoring program in Bristol, Burlington, Plainville, Southington and Wolcott <i>Bristol Brass General Grant Fund</i> <i>Douglas and Noreen Schumann Special Interest Fund</i></p>	\$3,000				

**GRANTS FROM BRADLEY HENRY BARNES & LEILA UPSON BARNES MEMORIAL TRUST**

**\$696,948**

**Arc of Southington** \$75,000  
Renovations to office space in Southington for expansion and ADA compliance

**Bread for Life** \$21,300  
Expansion of weekly meal program and purchase of new appliances and medical equipment

**Easterseals of Greater Waterbury** \$25,000  
Audiological Services for Southington residents

**Early Childhood Collaborative of Southington** \$25,000  
Well-being initiative for young children and caregivers

**Hartford HealthCare Senior Services** \$75,000  
Commitment of \$150,000 payable over two years to renovate Southington Care Center to make it more inviting and less institutional for dementia patients

**Hartford HealthCare Senior Services** \$10,000  
2019 Healthy Family FunFest

**Living in Safe Alternatives (LISA)** \$45,900  
Continuation of 1-2-3 Prevention, Intervention & Recovery program

**LiveWell Alliance, Inc.** \$115,000  
Dementia Friendly Southington Initiative

**Prudence Crandall Center** \$37,500  
Domestic Violence Intervention & Prevention Services

**Southington-Cheshire Community YMCAs** \$29,500  
Diabetes Prevention program and purchase of related equipment

**Southington Community Cultural Arts** \$2,750  
Apple & Arts Project, to benefit Southington nonprofit organizations

**Southington Community Cultural Arts** \$105,900  
Continuation of the All Access program for adults with disabilities

**United Way of Southington** \$48,098  
Senior Transportation program

**United Way of Southington** \$1,000  
Liberty Bank Thanksgiving Food Drive to benefit Southington

**Wheeler Clinic** \$80,000  
Southington Health Outreach Project

**GRANTS FROM THE BURLINGTON COMMUNITY FUND**

**\$4,850**

**Burlington Food Pantry** \$500  
Purchase containers and food cart

**Burlington Land Trust** \$1,000  
Installation of well at Whigville Grange

**Burlington Senior Citizens Commission** \$1,850  
Senior Center Technology Initiative  
*Burlington Community Fund  
James R. Parker Trust*

**Make A Mark Region 10 Enrichment Fund** \$500  
Johnnycake Music Festival

**Veterans Strong Community Center** \$1,000  
Mission Outreach - Burlington

**GRANTS FROM MAKE A MARK REGION 10 ENRICHMENT FUND**

**\$6,235**

**Har-Bur Middle School** \$250  
World Finals CT Odyssey of the Mind

**Har-Bur Middle School** \$500  
Shine your light on reading program

**Har-Bur Middle School** \$300  
Har-Bur Book Club

**Har-Bur Middle School** \$453  
Active Classroom Equipment

**Harwinton Consolidated/Lake Garda Elementary** \$582  
El Mundo Hispano

**Harwinton Consolidated School** \$250  
National Invention Convention

**Harwinton Consolidated School** \$360  
Coding with Ozobot Robots

**Harwinton Consolidated School** \$600  
Improving Executive Functioning through Imagineering

**Lewis S. Mills High School** \$250  
Adam Ezra group concert and discussion

**Lewis S. Mills High School** \$600  
Developing Appreciation of World Cuisine

**Lewis S. Mills High School** \$850  
Empowerment Group project

**Lewis S. Mills High School** \$500  
Drama Club

**Lewis S. Mills High School** \$250  
Humanitarian Club and Leo Club meal packing

**Lewis S. Mills High School** \$490  
*Soiree Francophone: An evening of French Immersion*

**GRANTS FROM THE MEN & BOYS' FUND**

**\$6,000**

**Boys & Girls Club of Bristol Family Center** \$1,500  
Passport to Manhood program

**Bristol Youth Services** \$2,000  
Skills to Pay the Bills program for teenage boys

**Environmental Learning Centers of CT** \$500  
Summer camperships for low-income boys

**Parent & Child Center at Bristol Hospital** \$2,000  
Full Circle program for fathers

**GRANTS FROM THE PLAINVILLE COMMUNITY FUND**

**\$10,000**

**Imagine Nation, A Museum Early Learning Center** \$1,000  
Plainville Day – free admission

**New Britain Museum of American Art** \$1,000  
Student Art Show and Reception

**Plainville Community Food Pantry** \$1,000  
Holiday basket program

**Plainville Community Schools** \$2,500  
Go Kid Go program

**Plainville Wind Ensemble** \$1,500  
Veteran's Day Concert

**Prudence Crandall Center** \$1,000  
Domestic & Teen Dating Violence Prevention in Plainville schools

**Louis Toffolon Elementary School PTO** \$1,000  
Science Day with CT Science Center

**Wheeler Regional Family YMCA** \$1,000  
Senior Water Fitness Class

**GRANTS FROM THE WOMEN & GIRLS' FUND**

**\$55,227**

**Bristol Family Resource Centers** \$3,300  
Best SELF: Self Image & Esteem, Leadership and preparing for the Future  
*Women & Girls' Fund  
Barbara Hackman Franklin Fund  
for Women*

**Bristol Youth Services** \$2,495  
Skills to Pay the Bills program for teenage girls  
*Women & Girls' Fund  
City of Bristol Treasurer's Fund for Financial Awareness*



EFFECTIVE GRANTMAKING

continued on next page



<b>Community Counseling Centers of Central Connecticut</b> Self: A Workshop to Improve Esteem for young women	\$2,400	<b>Shepard Meadows Therapeutic Riding Center</b> Equine Assisted Activities & Therapies for women and girls	\$1,800	<b>City of Bristol/Bristol Public Library Samuel Goodsell Library Fund</b>	\$27,731
<b>Early Childhood Collaborative of Southington</b> Reducing the Stress of Childcare Providers program	\$2,500	<b>Southington Middle School Athletic Association</b> Support a middle school girls' sports program	\$2,000	<b>City of Bristol/Fire Department Hap Barnes Fire Safety Trailer Fund</b>	\$1,220
<b>Environmental Learning Centers of Connecticut</b> Camperships for girls	\$2,500	<b>St. Casimir Rosary Society</b> Replacement mixers for the preparation of food for fundraisers	\$800	<b>City of Bristol/Manross Memorial Library</b> Manross Memorial Library Fund	\$19,532
<b>For Goodness Sake</b> Sweet Dreams program which provides new mattress and bedding sets to families	\$4,052	<b>St. Vincent DePaul Mission of Bristol</b> Housing support for women and girls	\$5,000	<b>City of Bristol/Parks and Recreation Samuel Goodsell Park &amp; Playground Fund</b>	\$23,670
<b>Girl Scouts of Connecticut</b> Camperships for girls	\$3,000	<b>The Children's Law Center, Inc.</b> Legal representation for female children in family court	\$2,250	<b>City of Bristol/Parks and Recreation, Summer Concert Series Margaret Haberman Memorial Fund for Music</b>	\$250
<b>Girls Inc. of Western Connecticut</b> Changing the Conversation, an after school program at Tyrrell Middle School in Wolcott that provides workshops on topics including social media use; bullying; verbal, psychological and physical manipulation; and alcohol and drug prevention	\$2,630			<b>Connecticut Historical Society Connecticut Quilt Registry Legacy Fund</b>	\$400
		<b>GRANTS FROM DESIGNATED FUNDS/AGENCY ENDOWMENTS/ FIELD OF INTEREST</b>	<b>\$215,678</b>	<b>Environmental Learning Centers of CT., Inc.</b> Environmental Learning Centers of CT, Inc. Fund	\$8,330
<b>Jane Doe No More</b> Safe Student Initiative and Escape Alive Survival Skills Self-Defense programs at St. Paul Catholic High School in Bristol	\$2,000	<b>American Clock &amp; Watch Museum American Clock &amp; Watch Museum, Inc. Fund</b>	\$7,980	<b>Environmental Learning Centers of CT., Inc.</b> Estela Wilderness Education Fund	\$310
<b>John J. Driscoll United Labor Agency</b> Building Pathways CT, individual supports for women training for a career in the Building Trades Women & Girls' Fund Wally Barnes Fund for Community Leadership Initiatives John & Gloria DiFrancesco Fund for Women and Girls	\$5,000	<b>Boys &amp; Girls Club of Bristol Family Center</b> Charles Kushlan Memorial Fund	\$2,000	<b>Hartford HealthCare Behavioral Health, Healthy Family FunFest</b> Calvanese Foundation Green & White Fund for Behavioral Health	\$650
<b>Literacy Volunteers of Central Connecticut</b> Family Sustainability through Literacy Plus, a program to increase reading, writing, math and financial literacy for women and their children Women & Girls' Fund City of Bristol Treasurer's Fund for Financial Awareness	\$3,700	<b>Boys &amp; Girls Club of Bristol Family Center</b> Sky Bight Foundation Fund for the Bristol Boys & Girls Club	\$4,340	<b>Hypertrophic Cardiomyopathy Association</b> Tyler James Gingery Memorial Fund	\$760
<b>Oak Hill – Chapter 126</b> One-on-one fitness training for women with disabilities or health challenges	\$4,050	<b>Boys &amp; Girls Club of Bristol Family Center</b> Edward Ingraham Fund	\$1,210	<b>Immanuel Lutheran School</b> Immanuel Lutheran Alumni Tuition Assistance Fund	\$740
<b>Plymouth Community Food Pantry</b> Purchase supplies for Diaper Bank	\$1,250	<b>Bristol College Navigator Program</b> Kalt Moreau Family Fund – "Ready Set Go!"	\$500	<b>Men &amp; Boys' Field of Interest Fund</b> Women & Girls' Field of Interest Fund	\$1,000
<b>Rushford Center</b> Building Resiliency through Alternative Therapies program, which provides women in outpatient treatment programs with therapies such as yoga and meditation	\$4,500	<b>Bristol Education Foundation</b> Bob and Carol Messier Family Fund	\$720	<b>Men &amp; Boys' Immediate Response Fund</b> Men & Boys' Field of Interest Fund	\$2,000
		<b>Bristol Family Resource Centers</b> Mama Sandy Caggiano Fund	\$310	<b>Music Lessons for Bristol Students in Need</b> Dan Cistulli Memorial Music Fund	\$1,235
		<b>Bristol Hospital Development Foundation</b> Bristol Hospital Development Foundation Fund	\$7,950	<b>New England Carousel Museum (Fire Museum)</b> Hap Barnes Fund for Fire Safety and Prevention	\$4,070
		<b>Burlington Library</b> Burlington Library Association Fund	\$820	<b>Plymouth Board of Education, materials for vocational training and robotics</b> Plymouth Century Club Fund	\$640
		<b>Burlington Historical Society</b> Burlington Historical Society Fund	\$460	<b>Plymouth Library Association</b> Plymouth Library Association Fund	\$830
		<b>City of Bristol/Bristol Public Libraries</b> Bristol Libraries Fund	\$4,130		

<b>Southington-Cheshire Community YMCAs</b> <i>Bradley Henry Barnes Fund for the Southington Community YMCA</i>	\$5,420	<b>Bristol Board of Education/ field trips</b> <b>Bristol Historical Society</b> <b>Bristol Hospital Development Foundation</b>	<b>Women &amp; Girls' Fund at Main Street Community Foundation</b> <b>Valley Community Baptist Church</b>	
<b>St. Andrew Evangelical Lutheran Church</b> <i>St. Andrew Mission Endowment Fund</i>	\$11,490	<b>Bristol Sports Hall of Fame</b> <b>Bristol Technical Education Center PFO</b> <b>Burlington Community Fund</b> <b>The Bushnell</b>	<b>IMMEDIATE RESPONSE FUND GRANTS</b>	<b>\$17,565</b>
<b>Town of Plymouth Parks &amp; Recreation</b> <i>Oasis Fund</i>	\$1,009	<b>Connecticut Children's Medical Center</b> <b>Connecticut Council for Interreligious Understanding</b> <b>Connecticut Forum</b> <b>Connecticut Public Broadcasting</b>	<i>Bristol Board of Education Immediate Response Fund</i> <i>Karen DuCotey Fund for Kids</i> <i>Leading Ladies Immediate Response Fund</i> <i>Main Street Children's Fund</i> <i>Men &amp; Boys' Immediate Response Fund</i> <i>Jean Sorey Fund for Single Parent Families</i> <i>The Werner Family Fund</i> <i>Women &amp; Girls' Immediate Response Fund</i>	
<b>Tunxis Community College Foundation</b> <i>Bristol Career Center of Tunxis</i> <i>Community College Endowment Fund</i> <i>Bristol Career Center of Tunxis</i> <i>Community College Endowment Fund II</i> <i>Tunxis Community College Fund</i> <i>Tunxis Community College II Fund</i>	\$29,090	<b>Dean College</b> <b>John &amp; Gloria DiFrancesco Fund for Women and Girls at Main Street Community Foundation</b> <b>Environmental Learning Centers of CT</b> <b>Fidelco Guide Dog Foundation</b> <b>First Congregational Church United Church of Christ</b> <b>Greater Hartford Arts Council</b> <b>Haiti Medical Fund at Main Street Community Foundation</b> <b>Hartford Symphony Orchestra</b> <b>Hill-Stead Museum</b> <b>Hotchkiss School</b> <b>Imagine Nation, a Museum Early Learning Center</b> <b>Dave Lepore Journalism Scholarship Fund at Main Street Community Foundation</b> <b>Main Street Community Foundation</b> <b>The Master's School</b> <b>Men &amp; Boys' Fund at Main Street Community Foundation</b> <b>National Conference for Community and Justice</b> <b>Nutmeg Big Brothers Big Sisters</b> <b>Southington-Cheshire Community YMCAs</b> <b>St. Francis de Sales Church</b> <b>St. Paul Catholic High School</b> <b>St. Vincent DePaul Mission of Bristol</b> <b>Trustees of Deerfield Academy</b> <b>United Way of West Central Connecticut</b> <b>UCONN School of Business</b> <b>World Affairs Council of CT</b>	<b>ADMINISTRATIVE ENDOWMENT FUND GRANTS</b>	<b>\$32,280</b>
<b>Turn the Towns Teal</b> <i>Bristol Talks Teal Fund</i>	\$250		<b>Main Street Community Foundation</b> <i>Barnes Group 150th Anniversary Fund</i> <i>Main Street Community Foundation Endowment Fund</i> <i>Dave &amp; Edith Scarritt Fund</i> <i>Yarde Metals Community Support Fund</i>	
<b>United Way of West Central Connecticut</b> <i>United Way of West Central Connecticut Fund</i>	\$7,900		<b>SCHOLARSHIP GRANTS</b>	<b>\$200,515</b>
<b>West Cemetery Association</b> <i>Carlyle F. Barnes Memorial Chapel Trust</i>	\$17,120		<b>GRANTS FROM THE DOUGLAS ROLAND AID FOR THE TRADES SCHOLARSHIP</b>	<b>\$6,590</b>
<b>Wheeler Clinic</b> <i>Wheeler Clinic/Dennis Keenan Fund</i>	\$7,970		<b>Bristol Technical Education Center</b> Scholarships for post graduates in certificate trade program of less than 2 years	
<b>Women &amp; Girls' Immediate Response Fund</b> <i>Women &amp; Girls' Field of Interest Fund</i>	\$5,770		<b>Tunxis Community College Foundation</b> Scholarships for post graduates in Allied Health program of less than 2 years	
<b>GRANTS FROM DONOR ADVISED FUNDS SUPPORTED THE FOLLOWING ORGANIZATIONS AND CHARITABLE INTERESTS</b>	<b>\$321,290</b>			
<b>Boys &amp; Girls' Club of Bristol Family Center</b> <b>Bristol Adult Resource Center</b> <b>Bristol Board of Education/Bristol Early Childhood Center</b>				

## GRANTS AT A GLANCE

For the 2018 year, Main Street Community Foundation awarded grants totaling **\$1,711,651**.



7%	Arts and Culture
44%	Health and Wellness
7%	Recreation and Youth Development
10%	Education
7%	Basic Needs
12%	Scholarships
7%	Human Services
6%	Other



Selena Norton shares a touching moment with Betty Radcliff as she receives a scholarship from the Radcliff Family Education Fund at the 2018 Scholarship Reception. Betty established the fund with her late husband Donald in 2002 to share their belief in the value of education by assisting high school graduates from the towns of Bristol and/or Plainville with scholarships to further their education.

## 2018 Scholarship Recipients

**4 Burns Scholarship  
St. Joseph/St. Paul Fund**  
Luke Hines  
Gianna Houle

**Christian Arndt  
Scholarship Fund**  
Jessica Dupont

**E. Bartlett Barnes Award of  
Journalism Fund**  
Alexander Mika  
Liberta Rrahimi

**Because of 26 Kindness Award  
Scholarship Fund**  
Cora Altomari  
Mackenzie Beaupre

**Stanley P. Bitel Memorial Fund**  
Nicholas Osuch

**Sylvia Bodak Memorial  
Scholarship Fund**  
Evan Bender

**Peter and Marjorie Bossi  
Educational Fund**  
Philip Andrews

**Bowerman Scholarship Fund**  
Emily Gdovin

**Bristol Boys & Girls Club  
Schulman Fund**  
Isabella Castrogiovanni  
Chloe Cyr  
Marlon Paltoo

**Bristol Lions Club F. Fred Soliani  
Memorial Scholarship Fund**  
Amy Bhagaloo

**Bristol Police Scholarship Fund**  
Joseph Strid

**Bristol Yale Club  
Scholarship Fund**  
Feryal Al Hamadani  
Jasiel Feliberty  
Phirin Khen  
Anna Korpanty  
Maciej Kossuth  
Magdalena Kossuth  
Selena Norton  
Shy-Ann Whitten  
Gabriella Williams

**Burlington Lions Charities  
Scholarship Fund**  
Hunter Cowger  
Lauren McCard

**Conn Acoustics  
Scholarship Fund**  
Nicholas Cranmer  
Rebecca Dion

**Peg Coughlin Nursing  
Scholarship Fund**  
Isabella Castrogiovanni

**Rit Croce Academic and  
Vocational Scholarship Fund**  
Elizabeth Ouellette

**Richard A. DellaVecchia  
Scholarship Fund**  
William Pfanzelt

**Jeffrey Downes Memorial  
Scholarship Fund for the Trades**  
Theodore Marcone

**Karen FINDER Scholarship Fund**  
Brooke Schlosser

**Carolyn Fisher Scholarship Fund**  
Adam Pelz

**Olivia Fusco Memorial Art  
Scholarship Fund**  
Alyssa McDonald

**GE's Industrial Solutions  
Scholarship Fund**  
Jarod Romankiw  
Alexandra Schulz  
Hannah Schulz  
Renukanandan Tumu

**Andrew and Murielle Giacomini  
Scholarship Fund**  
Angelica Rivera

**Azilda Hebert Music  
Scholarship Fund**  
Cassidee Knapik

**Dorothy Micloskey Ives  
Award Fund**  
Kara Friedman

**Grace & Norma Joy  
Scholarship Fund**  
Tina Guo

**John Kalinoski Scholarship Fund**  
Jacob Tellier

**Keating-Monaghan Memorial  
Scholarship Fund**  
Giovanni Barresi  
Milan Barresi  
Zachary Bartley  
Jacob Bartley  
Cole Beland  
Nathan Carlson  
Elizabeth Connelly  
Joseph Dess

Amy Dognin  
John Fontanez-Ceballos  
Michael Haddon  
Nicholas Haddon  
Julian Kostzewski  
Jonah Lopez  
Nina Mattioli  
Chase Mendela  
Nicholas Middlebrook  
Joseph Morelli  
Alejandro Ojeda  
Cydney Pelletier  
Maia Pena  
Gisselle Pena  
Michael Rigsby  
Rachel Ruffino  
Sadie Sherman  
Hannah St. John  
Noah Stevens

**Lena M. and Peter L. Korotie  
Scholarship Fund**  
Jonathan Passander

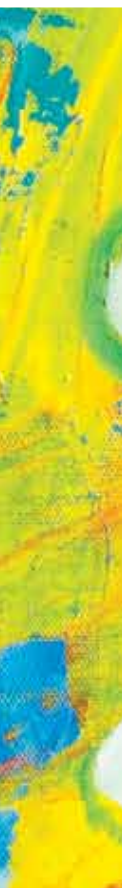
**Vincent T. Kozyrski  
Scholarship Fund**  
Fiona Pare

**Sean Landry Memorial  
Basketball Scholarship Fund**  
McKenzie Huria

**Ray Machine Corp./Ray &  
Darlene Lassy Family Fund**  
Alyssa Prozzo

**John J. and Doris Lazorik  
Memorial Scholarship Fund**  
Fadima Kamano  
Anna Korpanty  
Selena Norton

EFFECTIVE  
GRANTMAKING





**Leger Initiative for Education Fund**  
Rachel Lewis

**Dave Lepore Journalism Scholarship Fund**  
Alexander Mika

**Therese MacCallum "Great Kid" Scholarship Fund**  
Dylan Chiaro

**Nicholas P. Maglio ACE Fund**  
Anna Korpanty

**Malerbo Memorial Scholarship Fund**

Gabrielle Bernier  
Madison Bernier  
Amarion Brooks  
Isabella Crowley  
Cameron Fabrizio  
Jenna Fulvi  
Megan Gaudreau  
Adrian George  
Priscilla Godlewski  
Lexi Gosselin  
Taylor Lorenzetti  
Evan Mendela  
Christian Peterson  
Bella Peterson  
Barbara Retartha  
Walker Sharp  
Julie Swicklas  
Jeremiah Tatum  
Noah Waters  
Stefan Zwolinski  
Nina Zwolinski

**Elizabeth I. and Louis J. Matt Medical Scholarship Fund**

Abigail Leander  
Julia McPherson

**Robert E. and Angeline P. McCormack Scholarship Fund**  
Emily Tinyszyn

**McMaster-Moulthrop Scholarship Fund**  
Desmond DeVille  
Jasiel Feliberty

Michael Kaminski  
Pat Kjornrattanawanich  
Jacob Nelson  
Selena Norton  
Nicholas Osuch  
Sydney Pina  
Zoe Sinclair

**Ken E. Micloskey Award**  
Corey Picard

**Al and Joan Monico Scholarship Fund**  
Feryal Al Hamadani

**NESMA Scholarship Fund**  
Fiona Pare  
Ashley Nelson

**AJR Nocera Memorial Fund**  
Feryal Al Hamadani  
Desmond DeVille

**Anthony Norton Scholarship Fund**  
Jessica Dupont

**Scott W. Organ Student-Athletic Scholarship Fund**  
Amy Bhagaloo

**Ralph Papazian Memorial Scholarship Fund**  
Maggie Santacroce

**Estelle Delano Peterson Scholarship Fund**  
Cara Jones

**Dorothy Dewey Picard Music Scholarship Fund**  
Philip Andrews

**Plymouth Community Club Scholarship Fund**  
Jessica Dupont

**Alice C. Pulsifer Memorial Scholarship Fund**  
Alexander Mika

**Max and Ruth Rabin Scholarship Fund**  
Selena Norton

**Radcliff Family Education Fund**  
Alexa Cahill  
Tyrah Green  
Selena Norton  
David Poniatowski

**Radcliff Plainville High School Fund**  
Jared Demmons  
Gregory Sileo  
Emanuel Yawin  
Nicholas Zaleski

**Louis J. Rascoe Scholarship Fund**  
Courtney Johnpiere

**Julie A. Roche Nursing Scholarship Fund**  
Isabella Castrogiovanni

**Clement J. Roy Scholarship Fund**  
Tina Guo

**Saint Matthew School Scholarship Fund**  
Anthony Gerardi

**Dora Schubert Scholarship Fund**  
Alyssa Prozzo

**Lawrence (Larry) Selza Memorial Scholarship Fund**  
Katrina Mason

**Glo Sessions Fund for Art Education**  
Alex Arango

**Jill Lynne Shackett Educational Scholarship Fund**  
Marissa Brevetti  
Emily Deloge

**Southington Observer/StepSaver Scholarship Fund**  
Laura Furtak

**Jay W. and Elizabeth M. Tyrrell Scholarship Fund**  
Alex Arango

**Louise (Humphrey) Van Gorder Music Camp Scholarship Fund**  
Luke Ashworth

**Dr. Joan T. Wallace Prize for Highest Achievement in English at Southington High School**  
Lydia Yu

**Peggy Ann Walsh Memorial Scholarship Fund**  
Anna Korpanty  
Selena Norton  
Fiona Pare

**Kristen Warner Scholarship Fund**  
Morgan Santos

**John Whitcomb Scholarship Fund**  
Anna Korpanty

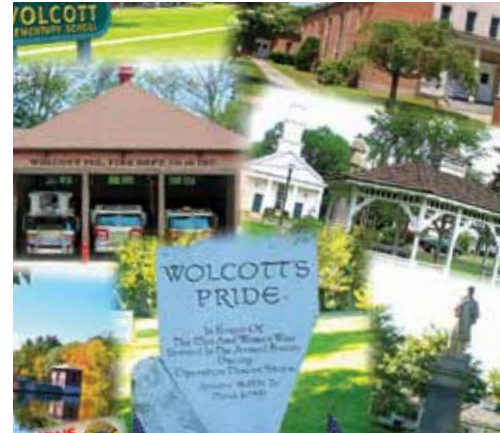
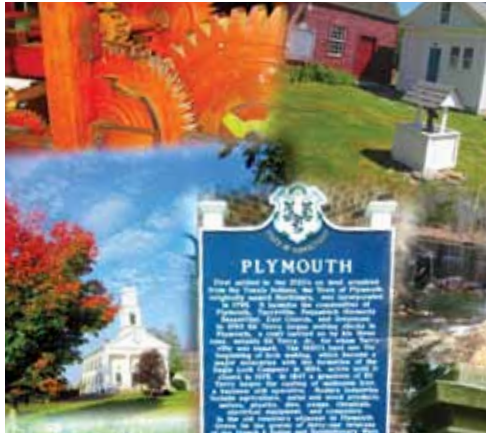
**Eva Brodowicz Wickwire Volunteer Scholarship Fund**  
Isabella Castrogiovanni

**Pat & Bob Wollenberg Scholarship Fund for Special Education**  
Elizabeth Sears

**Yarde Metals Memorial Scholarship Fund**  
Carly Brunelle  
Nicole Collin  
Chloe Cyr  
Madison Cyr  
Michael Kaminski  
Nicole Ledesma  
Alexis Thompson



2018 scholarship recipients were honored at the Foundation's Scholarship Reception held on June 11, 2018 at the DoubleTree by Hilton Hotel Bristol.



COMMUNITY LEADERSHIP

# Community Leadership

The Foundation's community leadership efforts, also known as "Money in Motion", address a broad range of community goals. We identify opportunities within the community to support meaningful dialogue on issues affecting the towns we serve. We convene community members, assess changing needs, and propose action on critical concerns. In this way, we are able to develop collaborative solutions to meet emerging needs and provide support to what matters most to the people who live and work in the cities and towns of this region.

## SUPPORT FOR BRISTOL HOSPITAL'S EXPANDED EMERGENCY CENTER

In 2018, Main Street Community Foundation's Board of Directors voted in favor of a multi-year grant totaling \$50,000 in support of Bristol Hospital's renovation and expansion of its Emergency Center.

Founded in 1921, Bristol Hospital is the leading health provider for those who live and work in the Greater Bristol area, serving approximately 40,000 patients a year.

Susan Sadecki, President & CEO, said, "Main Street Community Foundation is proud to support Bristol Hospital's Emergency Center renovation and expansion campaign. This project will create a more modern facility and provide the latest in advanced emergency services to residents and visitors to our community."

Sadecki continued, "We want the Emergency Center to be the best it can be, and by expanding its space and capabilities, it will further enhance the delivery of the exceptional care it delivers each and every day. The Bristol Hospital Emergency Center is everyone's Emergency Center. We chose to support this project because it is crucial to our community and will be a valuable resource for all, for generations to come."

Mary Lynn Gagnon, Executive Director of the Bristol Hospital Development Foundation, said, "Bristol Hospital is proud to partner with the Main Street Community Foundation, who is committed to the health and wellness of our community. Their generous gift to the Emergency Center Capital Campaign will help ensure that we are poised to meet the future

demands of our patients. Bristol Hospital's Emergency Center plays a vital role in our community, and this new and enhanced center will support the exceptional, world class service that our community has grown to expect and deserves."



## HELPING LOCAL NONPROFITS CREATE OPPORTUNITIES FOR GOOD

Main Street Community Foundation recognizes the vital role nonprofit organizations play in creating vibrant and healthy communities. They are a driving economic force and provide essential programs that improve the conditions and opportunities for local residents. We are here to help them create opportunities for good.

For the past decade, the Foundation has partnered with local organizations, businesses and individuals to offer workshops and webinars as part of its Nonprofit Education Series, which is available to local organizations. Sessions are on topics of interest that will enhance the development and knowledge of nonprofit professionals, board members and volunteers. In 2018, the Foundation partnered with the Association of Fundraising Professionals Connecticut Chapter (AFP) to present three webinars. The topics included fundraising,

social media and board development and representatives from nearly three dozen organizations attended.

Main Street Community Foundation also provides nonprofits access to numerous online resources that may help them in their growth and management as they work to strengthen our communities. These can be accessed at [mainstreetfoundation.org/nonprofit-resources](http://mainstreetfoundation.org/nonprofit-resources).

"The staff of the Foundation is also always available as a resource as well," stated Susan Sadecki, President & CEO of the Foundation. "We are very proud that nonprofit leaders and volunteers feel comfortable and confident when approaching us for advice or guidance."

The Foundation regularly publicizes relevant funding and educational opportunities

and provides direction on submitting grant applications. Organizations that are current grantees can find numerous resources and guidelines at [mainstreetfoundation.org/grantee-resources](http://mainstreetfoundation.org/grantee-resources). This page includes information on grant reporting, links to the online grants center and information on how to communicate the grant award, including a sample news release and media distribution list.

Nonprofits are the cornerstones of our communities and Main Street Community Foundation has made a commitment to strengthening and supporting them in ways that include more than just giving financial grants.

"We take pride in knowing the ins and outs of the other organizations serving the local communities," stated Susan Sadecki. "We are in this together."

## COMMUNITY FOUNDATION STAFF MAKE IT A PRIORITY TO GET INVOLVED WITH YOUR COMMUNITIES

No one knows the needs of those living in the towns we serve more than those working directly with them. Because of that, local level committees, teams and task forces are critical to improving the conditions and opportunities for residents.

Main Street Community Foundation recognizes that and participates on these committees to develop collaborative, proactive solutions and meet emerging needs in the six communities we serve.

The local committees Community Foundation staff participate on include:

**Bristol Adult Education's Community Advisory Committee** provides program support and advice on the services necessary to advance opportunities for adults 17 and over through Adult High School Completion, English as a Second Language, Citizenship and Continuing Education Programs for members of the community.

**Bristol Early Childhood Alliance (BECA)** involves all interested parties of the Bristol community in building awareness of issues affecting children ages birth through eight. Among various subcommittees, the BECA Health Subcommittee promotes awareness and education of healthier eating and lifestyle for a healthier community.

**B.E.S.T.-4-Bristol (Bristol Eliminating Substance Abuse Together)** engages and collaborates with all sectors of the community to deliver substance abuse and prevention services.

**Bristol Cares** provides nonprofit and social service agencies an opportunity to exchange information in keeping the City of Bristol working at its maximum capacity and bringing the best possible service to residents.

**Bristol Hunger Action Team** is a group of individuals and organizations working in collaboration to solve hunger in Bristol.

**Greater Bristol Technical Advisory Council** promotes awareness among students, educators, guidance counselors and parents regarding career opportunities in manufacturing and trades; engages manufacturing and trade related businesses; and facilitates communication between educators and businesses in an effort to enhance and further develop school curriculums and educational opportunities.

**Bristol Technical Education Center - Institutional Advisory Committee** members advise the school administration and integrate consultation to ensure the BTEC continually strives to meet the occupational and educational needs of the community including program success, enrollment and relevance.

**Central Connecticut Chambers of Commerce Board of Directors** governs the Central Connecticut Chambers of Commerce, one of the largest Chambers in the state that addresses the business community's pressing needs and issues.

**Central Connecticut Chambers of Commerce Legislative Action Committee** provides Chamber members with access to legislators and policymakers in order to improve business conditions in the area and the state of Connecticut.

**Connecticut Collective for Women and Girls** is a collaborative of organizations committed to the advancement of women and girls, including those who are cisgender, transgender, and non-binary, in the state of Connecticut.

**Bristol Task Group to End Homelessness** works collaboratively to build a homelessness response and prevention system that meets the dynamic conditions of human need. They plan, advocate and take actions to prevent and to resolve the housing problems and needs of people in Bristol experiencing homelessness or at risk of becoming homeless.

**Plainville Human Services Providers** brings together nonprofit and social service agencies to exchange information and develop solutions that improve the quality of life for Plainville residents.

**Regional School District #10 Coordinated School Health Team** is a group of individuals representative of segments of the community that provides advice on coordinated school health programming and its impact on student health and learning.

**PYVOT (Professional Young Visionaries of Tomorrow)** is a young professionals and entrepreneurs group of Central Connecticut, operating in partnership with the Central Connecticut Chambers of Commerce and United Way of West Central Connecticut.

**Southington Behavioral Health Stakeholders Group** assists Southington residents and families in recognizing the signs and symptoms of mental health and substance use challenges, navigating available resources and reducing barriers.

**Tunxis Civic Engagement Institute Community Advisory Committee** members advise this newly created Institute on community needs and strategies for effectively deploying students in hands-on experiences to further their civic engagement learning.

Community Foundation staff have also served on several other committees in the past and will continue to join ones that are dedicated to improving the lives of residents in the local communities.

In addition, to keep up with current trends in the philanthropic field, specifically in the state of Connecticut, and to advance the professional development of staff, the Community Foundation participates on several committees within the Connecticut Council for Philanthropy. Those committees include: CEO Network; Communications Network; Foundation Administrator Network; Program Officers Network and Women and Girls Funders Network.

## DATAHAVEN COMMUNITY WELLBEING SURVEY

Are you satisfied with the city where you live? How responsive is the local government to the needs of its residents? Are residents able to obtain suitable employment? How would you rate your overall health? These are some of the more than 100 questions that were asked in live, in-depth interviews to over 16,000 randomly-selected adults in every town in Connecticut as part of the 2018 DataHaven Community Wellbeing Survey.

DataHaven, a nonprofit serving Connecticut since 1992, works to improve quality of life by collecting, interpreting and sharing public data for effective decision-making. Its Community Wellbeing Survey is a nationally-recognized program that provides critical, highly-reliable local information not available from any other public data source.

In order to ensure that Bristol, which is the 10th largest city in Connecticut, was fairly represented in the survey respondents, Main Street Community Foundation made a Money in Motion grant of \$2,000 and was able to collaborate with the Bristol Development Authority and Bristol Hospital who supported the project at the same level. Thanks to this funding, DataHaven was able to conduct surveys with 208 Bristol residents to drill down into community-specific data for our area.

This survey is conducted every three years and this is the second time that MSCF has supported its collection of data in our community. Since the collection of data in 2015, the number of adults who feel that their neighborhoods are improving and that local government is listening to residents has increased. Bristol adults are also seeing much greater growth in job prospects than three years ago, an increase shown across all income brackets.

Unfortunately, access to food and housing seems inequitable, with younger adults, lower-income adults and adults living with children reporting greater risk of food and housing insecurity.

Main Street Community Foundation joined over 80 state and local government, health care, academic, and community partners throughout Connecticut to fund this year's survey. **To view the full report of this survey, please visit [www.ctdatahaven.org/reports/datahaven-community-wellbeing-survey](http://www.ctdatahaven.org/reports/datahaven-community-wellbeing-survey).**



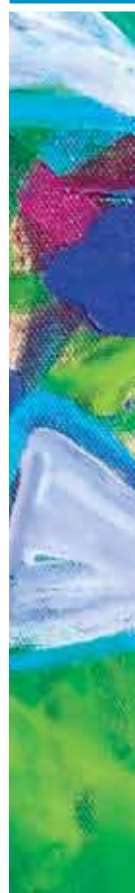
The Early Childhood Collaborative of Southington held *Bike Safe Southington* in August 2018. This was a free and fun bicycle safety event for children ages 5 to 12 that provided bicycle safety checks, a bicycle education course, helmet decorating and more. *Bike Safe Southington* was supported with a grant from the Bradley Henry Barnes & Leila Upson Barnes Memorial Trust.



## Stewardship of Assets

The role of the Main Street Community Foundation as a steward of permanent assets provides a unique service to the community. Each of the funds listed in this report was established by a donor with a very specific purpose in mind. Safeguarding assets in perpetuity to honor donor intent is a responsibility we uphold every day. Administered prudently and thoughtfully, endowments will continue to provide a stable source of funding to projects, programs, and organizations in the Foundation's service area. All financial policies instituted by the Foundation are cornerstones of that prudent stewardship.

*For a full description of each named fund, visit [www.mainstreetfoundation.org](http://www.mainstreetfoundation.org)*



# Funds

## DONOR ADVISED FUNDS

These funds allow donors to participate actively in grantmaking by making grant recommendations to the Foundation's Board of Directors.

Tom & Melanie Barnes Family Fund (2004)  
Betts Family Fund (2017)  
The Broad View Fund (2016)  
Bill & Janet Brownstein Charitable Fund (2015)  
John Brozinski and Anne Povilaitis Pulmonary Rehabilitation Fund (2003)  
Caiaze Family Charitable Fund (2013)  
George & Maureen Carpenter Family Charitable Fund (2013)  
Clement Family Fund (2010)  
Denorfia Family Charitable Fund (2003)  
Dumont Family Charitable Fund (2000)  
Cheryl Dumont-Smith Community Fund (2007)  
Pattie & Bill Dunn Family Charitable Fund (2011)  
Fiordella Fund (2001)  
Terry and Marguerite Fletcher Family Fund (2007)

Furey Family Charitable Fund (2005)  
Greater Bristol Chamber of Commerce Fund (2000)  
Hamzy Family Charitable Fund (2010)  
Pat & Morrie Laviero Family Charitable Fund (2015)  
John & Sandra Leone Family Charitable Fund (2008)  
Muncy/Smith Family Fund (2007)  
Geoffrey M. Pierce Memorial Fund (2017)  
Stephen and Katherine Saman Memorial Fund (2015)  
Smith Family Charitable Fund (2004)  
Technical Education Fund (2005)  
Tim and Mary Walsh Charitable Fund (2011)  
Pat & Bob Wollenberg Charitable Fund (2017)  
Jane Woodard Charitable Fund (2017)  
Zomick Family Fund (2006)



Jarre and Whit Betts



Jarre Betts, Wally Barnes and Barbara Hackman Franklin

## JARRE BETTS' LEGACY LIVES ON AFTER RETIREMENT

On December 31, 2018, not only did Main Street Community Foundation celebrate the end of 2018, but they also celebrated the end of an era – **Jarre Betts, Vice President of Programs, was retiring after 18 years with the Foundation.**

When Jarre began with the Foundation, it was granting \$165,000 annually. She helped grow that to \$1.8 million by the end of 2018. She saw the staff grow from one full-time and two part-time workers to a full staff of six. She saw the reputation of Main Street Community Foundation go from unknown to becoming one of the most well-respected nonprofit organizations in its six-town service area. She was an integral part of all of this advancement and growth.

As if the legacy she left behind at the Foundation itself weren't enough, Jarre and her husband, State Representative Whit Betts, established the Betts Family Fund in 2017 to ensure they could leave a lasting legacy in the community as well. In just two years, eight (8) grants, totaling \$10,710, from their donor advised fund have supported local organizations.

Since Jarre was still working at the Foundation when she and Whit started this fund, they decided a donor advised fund was the best fund type to meet their local charitable goals. Donor advised funds allow donors to participate actively in grantmaking by making grant recommendations to the Foundation's Board of Directors. Donor advised fund holders can seek advice from the Foundation because the staff stay current with the emerging needs in the six towns served and can help to identify those organizations where support is most needed. As Whit said, "Due to Jarre's first-hand knowledge of the Foundation, we had a high level of confidence and trust that they would know where our grants would do the most good in the community."

Jarre and Whit enjoy helping a program get started, adding to another fund or assisting unusual requests. They also believe in supporting the administrative side of the Foundation. Again as Whit described, "Not many people are inclined to support the admin side. But without exceptional staff, the integrity and reputation of the Foundation can be put at risk, which affects past, present and future donors."

Jarre encourages others to think of establishing a donor-advised fund: "With this kind of fund, you have up to five years to grow the Fund to at least \$10,000. So you can use special occasion gifts like birthdays, holidays, retirements to go toward the fund." And Whit chimed in, "It's not the amount of money, it's the thought that matters. Once you speak with the Foundation, you will see how much your gift will be appreciated by others and how much it can do in the community."

After 44 years of marriage, finishing each other's thoughts is just one of the ways that Jarre and Whit are on the same page about helping their community. In addition to contributions they are making to the fund now, their fund will also receive a legacy gift from Jarre and Whit's estate after they are no longer here. As members of the Foundation's CornerStone Society, they are an example of donors who establish a fund during their lifetime that then becomes a beneficiary of their estate plan.

Jarre and Whit have planned a great deal to ensure they will leave a legacy that can be carried on by their children, Amy and Drew, and their two granddaughters, Ella and Maya. While Jarre is greatly missed on the Foundation staff, she's still involved in many ways with the Foundation and the Betts Family Fund is just one of the ways that she and Whit are leaving a legacy.

## AGENCY ENDOWMENTS

These funds provide nonprofit organizations a full range of endowment management services.

American Clock & Watch Museum, Inc. Fund (1999)  
Bristol Adult Resource Center Fund (2016)  
Bristol Hospital Development Foundation Fund (1999)  
Bristol Boys and Girls Club Fund (2004)  
Burlington Historical Society Fund (2008)  
Burlington Land Trust, Inc. Fund (2007)  
Burlington Library Association Fund (1999)  
Environmental Learning Centers of CT, Inc. Fund (1999)  
Plainville Affordable Housing Corporation Fund (2000)  
Plymouth Library Association Fund (1999)

St. Andrew Mission Endowment Fund (2009)  
The Bristol Career Center of Tunxis Community College Endowment Fund (2001)  
The Bristol Career Center of Tunxis Community College Endowment Fund II (2004)  
Tunxis Community College Fund (2000)  
Tunxis Community College II Fund (2004)  
United Way of West Central Connecticut, Inc. Fund (1999)  
Wheeler Clinic/Dennis Keenan Fund (1999)

## DESIGNATED AND PROJECT FUNDS

These funds provide donors the opportunity to designate support for a specific charitable organization or charitable project.

**Bradley Henry Barnes Fund for the Southington Community YMCA** (transferred in 2011)  
Southington Community YMCA

**Carlyle F. Barnes Memorial Chapel Fund**  
(transferred in 2007) Originally established in 1936, for the maintenance and upkeep of the Carlyle F. Barnes Memorial Chapel

**Hap Barnes Fund for Fire Safety and Prevention** (2002)  
Museum of Fire History in Bristol

**Hap Barnes Fire Safety Trailer Fund** (2012)  
To purchase and maintain a fire safety trailer to instruct children about fire safety

**Bristol Libraries Fund** (transferred in 2014)  
For operating or capital expenditures to support the Bristol Public Library in Bristol and the F.N. Manross Memorial Library in Forestville

**Bristol Sports Hall of Fame Fund (BSHOF)** (2005)  
For the general purposes of BSHOF and scholarships for Bristol High School student athletes

**Julius D. Bristol Trust Fund** (transferred in 2007)  
Originally established in 1888, for the back-to-school needs of financially disadvantaged children, administered by Southington Community Services Department

**Mama Sandy Caggiano Fund** (2015)  
Family Resource Center at South Side School in Bristol

**Connecticut Quilt Registry Legacy Fund** (2002)  
Connecticut Quilt Project of the Connecticut Historical Society

**Corliss Fund for the Bristol Family Resource Centers** (2017)  
Bristol Family Resource Centers

**Early Learning – A PET Project Fund** (2018)  
Bristol Preschool Child Care Center, Inc. and Imagine Nation, A Museum Early Learning Center for general operating and program support

**Estela Wilderness Education Fund** (2012)  
Environmental Learning Centers of Connecticut (ELCCT) for camperships, program development, and trail maintenance

**Friends of Bristol Parks and Recreation Fund** (2013)  
Bristol Parks and Recreation Department for park enhancement projects

**Tyler James Gingery Memorial Fund** (2009)  
Hypertrophic Cardiomyopathy Association

**Samuel Goodsell Library Fund** (transferred in 2014)  
The acquisition and purchase of books, preferably nonfiction, for the Bristol Public Library

**Samuel Goodsell Park and Playground Fund** (2013)  
For the care, maintenance, improvement, acquisition, and extension of the parks and playgrounds in Bristol

**Haiti Medical Fund** (2017)  
Support for humanitarian efforts in Haiti to improve access to essential medical and surgical services and education to medical providers

**Immanuel Lutheran Alumni Tuition Assistance Fund** (2015)  
Immanuel Lutheran School in Bristol

**Edward Ingraham Fund** (2011)  
Boys & Girls Club of Bristol Family Center, to provide summer camp experiences for Bristol youth

**Inside Rebecca's Backpack Fund** (2006)  
Southington Community Services, for school supplies, summer school, or other educational opportunities

**Kristen's Kause Fund** (2015)  
Southington-Cheshire Community YMCAs, for a community-wide fire safety education program which includes information specific to the dangers of fireworks

**Kristen's Wishes Fund** (2007)  
Southington Community Services, "Wishes" for Youth

**Charles Kushlan Memorial Fund** (transferred in 2006)  
Bristol Boys and Girls Club Youth of the Year Award

**Ercole and Pamela Labadia Fund for the Boys & Girls Club** (2017)  
Boys & Girls Club of Bristol Family Center, to support the Cambridge Park Clubhouse

**Manross Memorial Library Fund** (transferred in 2014)  
For operating or capital expenditures to support the F.N. Manross Memorial Library in Forestville

**Bob and Carol Messier Family Fund** (2008)  
Bristol Business Education Foundation mini-grant program

**Nutmeg Symphony Orchestra Educational Activities Fund** (2018)  
Nutmeg Symphony Orchestra, to support educational programs and musical activities

**Eva M. Pierce Memorial Charitable Fund** (2008)  
Meals for the Needy, Meals on Wheels, St. Vincent DePaul Society of Bristol, the Prudence Crandall Center, The Cancer Center at Bristol Hospital

**Sky Bight Foundation Fund for the Bristol Boys & Girls Club** (2011)  
Endowment for the Bristol Boys & Girls Club and Family Center facility, which opened in October 2014

**Pat & Bob Wollenberg Fund for Bristol Adult Resource Center** (2018)  
Bristol Adult Resource Center, to support capital projects and repairs

**Pat & Bob Wollenberg Fund for Opportunity House** (2018)  
Opportunity House, Inc. of Hamden, CT to support the employee appreciation program

## FIELD OF INTEREST FUNDS

These funds allow donors to support a broad category of need such as the arts, healthcare, education, environment or a geographic area. Grant recipients are selected by the Foundation's Distribution Committee.

**Bradley Henry Barnes & Leila Upson Barnes Memorial Trust** (transferred in 2004)  
To meet the health and healthcare needs of Southington residents

**Fuller and Myrtle Barnes Fund for Education** (1998) To provide special educational programs and opportunities for teachers and students in the pre-school to 12th grade populations

**Becker Family Fund** (1996) For healthcare, education and social action

**Sid Bernard & Ed Miller Children's Fund for the Visual Arts** (2013) To support programs and projects teaching innovative or traditional art education skills to students from Bristol

**Donna Borysewicz Fund for Women** (2015)  
To advance initiatives identified by the Women & Girls' Immediate Response Fund of the Foundation

**Bristol Board of Education Immediate Response Fund** (2005) To provide immediate response grants for the children, families and employees of the Bristol School system in need of assistance

**Bristol Talks Teal Fund** (2013) To raise awareness of ovarian cancer and its symptoms, and to assist individuals who suffer from ovarian cancer and may qualify for medical assistance they cannot provide for themselves

**Burlington Community Fund** (2011) For charitable projects and programs that will enhance the quality of life for the citizens of Burlington

**Calvanese Foundation Green & White Fund for Behavioral Health** (2013) To provide support to adults and children residing in Southington who are in need of mental health and/or substance abuse treatment services by providing mental health screening, access to care, and education

**Ciccarelli-Vitale Community Advancement Fund** (2001) For distribution in the fields of education and the environment; to provide assistance to Bristol residents acutely in need

**Dan Cistulli Memorial Music Fund** (2004)  
Funding for lessons and/or instruments to young people in Bristol who may need financial assistance

**John & Gloria DiFrancesco Fund for Women and Girls** (2011) To advance initiatives identified by the Women & Girls' Fund of the Foundation

**Karen DuCotey Fund for Kids** (2011) For students in Regional School District #10 in need of immediate assistance due to a particular life situation or unexpected financial hardship

**Barbara Hackman Franklin Fund for Women** (2011) To support initiatives identified by the Women & Girls' Fund of the Foundation

**Margaret Haberman Memorial Fund for Music** (2010) For the promotion and appreciation of music in the communities served by the Foundation

**Hands-On Fund** (2018) To support non-sport, noncompetitive programs and activities for school-age children living in or attending school in Southington

**Jaspersohn Family Memorial Fund** (2001)  
To support programs and organizations which provide humanitarian efforts to the greater Bristol area

**Hal Kilby Athletics Fund** (2016) To support community athletic needs in Bristol

**Paige Wartonick Laferriere Memorial Fund** (2001) To support programs and organizations with preference to health care, education and social action

**Leading Ladies Immediate Response Fund** (2010) For immediate response grants to women and girls in Southington with emphasis on basic needs, health, safety, education, and employment opportunities

**Main Street Children's Fund** (2006) To provide immediate response grants to address the basic needs of children under the age of 18, or to promote the general well-being of area youth

**Make A Mark Region 10 Enrichment Fund** (2009) To advance special and creative initiatives to benefit the students who attend public schools in Burlington and Harwinton

**Malerbo Childrens Field Maintenance Fund** (2005) To provide grants to non-profit organizations in Burlington and Bristol for organized youth sports activities, equipment, or field improvements

**Elizabeth I. and Louis J. Matt Animal Protection Fund** (2006) To provide for the care and support of animals in need in the State of CT

**Men & Boys' Fund** (2016) To make it possible for men and boys to improve the quality of their lives, increase self-sufficiency and make a positive difference in their community

**Men & Boys' Immediate Response Fund** (2017) To provide immediate assistance for basic needs and opportunities for men and boys of all ages

**Merriman Family Fund** (2000) To promote environmental and ecological preservation, conservation, education, research and advocacy

**JoAnn & David Mills Family Fund** (2013) To support a variety of charitable organizations primarily in the communities served by the Foundation

**Laura Schlesinger Minor Fund** (2017) To support initiatives identified by the Women & Girls' Fund of the Foundation

**James R. Parker Trust** (transferred in 2002)  
To meet the needs of residents of the town of Burlington

**Plainville Community Fund** (2006) To provide funding for charitable projects and programs that will enhance the quality of life for Plainville citizens

**Plymouth Century Club Fund** (2006) To provide mini-grants to Plymouth's teachers and other school personnel for creative and innovative instructional practices

**Douglas and Noreen Schumann Special Interest Fund** (1998) To support community programs focused on building self-esteem, confidence and strong values in young people

**Jean Sorey Fund for Single Parent Families** (2015) To provide support to single parents for immediate needs to better their families

**Southington Arts Council Legacy Fund** (2018) To provide grants for the promotion and appreciation of artistic and cultural opportunities to benefit Southington residents

**Jay and Elizabeth Tyrrell Fund for the Arts** (2011) To advance artistic and cultural opportunities in the greater Bristol area

**Werner Family Fund** (2000) To provide immediate assistance for basic needs and opportunities for inclusion to families with children facing financial hardship

**Women & Girls' Fund** (2001) To support programs which improve the conditions and opportunities for females in the towns served by the Foundation

**Women & Girls' Immediate Response Fund** (2002) To provide immediate assistance for basic needs and opportunities for women and girls of all ages



## SCHOLARSHIP FUNDS

**These funds enable a donor to establish a named fund for any level of education. Donors may designate a particular school, field of study and select eligibility criteria.**

Christian Arndt Scholarship Fund (2006)	Rit Croce Academic and Vocational Scholarship Fund (2014)	Keating-Monaghan Memorial Scholarship Fund (2008)	Robert E. and Angeline P. McCormack Scholarship Fund (2002)
E. Bartlett Barnes Award of Journalism Fund (1999)	Richard A. DellaVecchia Scholarship Fund (transferred in 2002)	Lena M. and Peter L. Korotie Scholarship Fund (1997)	McMaster-Moulthrop Scholarship Fund (1999)
Because of 26 Kindness Award Scholarship Fund (2014)	Katherine Dobroczyński Memorial Scholarship Fund (2014)	Vincent T. Kozyrski Scholarship Fund (2010)	Ken E. Micloskey/Dorothy Micloskey Ives Award Fund (2002)
Stanley P. Bitel Memorial Fund (2015)	Jeffrey Downes Memorial Scholarship Fund for the Trades (2015)	Sean Landry Memorial Basketball Scholarship Fund (2008)	Dave Mongillo Memorial/Golf Scholarship Fund (2018)
Sylvia Bodak Memorial Scholarship Fund (2001)	Karen Finder Scholarship Fund (2003)	Ray Machine Corp./Ray & Darlene Lassy Family Fund (2017)	Al and Joan Monico Scholarship Fund (2013)
Peter and Marjorie Bossi Educational Fund (2003)	Carolyn Fisher Scholarship Fund (transferred in 2004)	John J. and Doris Lazorik Memorial Scholarship Fund (1997)	NESMA Scholarship Fund (2010)
Bowerman Scholarship Fund (2008)	Olivia Fusco Memorial Art Scholarship Fund (2016)	Leger Initiative for Education Fund (L.I.F.E.) (2005)	AJR Nocera Memorial Fund (2007)
Bristol Boys & Girls Club Schulman Fund (2000)	GE's Industrial Solutions Scholarship Fund (2015)	Dave Lepore Journalism Scholarship Fund (2003)	Anthony Norton Scholarship Fund (2015)
Bristol Lions Club F. Fred Soliani Memorial Scholarship Fund (2008)	Andrew and Murielle Giacomini Scholarship Fund (2003)	Thérèse MacCallum "Great Kid" Scholarship Fund (2005)	Scott W. Organ Student-Athletic Scholarship Fund (2000)
Bristol Police Scholarship Fund (1999)	David Greenleaf Academic Achievement Award (2015)	Nicholas P. Maglio ACE Fund (2011)	Ralph Papazian Memorial Scholarship Fund (2013)
Bristol Yale Club Scholarship Fund (1999)	Azilda Hebert Music Scholarship Fund (2000)	Main Street Community Foundation Scholarship Fund (1997)	Estelle Delano Peterson Scholarship Fund (2004)
Burlington Lions Charities Scholarship Fund (2000)	Grace & Norma Joy Scholarship Fund (2008)	Malerbo Memorial Scholarship Fund (2005)	Dorothy Dewey Picard Music Scholarship Fund (1999)
4 Burns Scholarship/St. Joseph/St. Paul Fund (2000)	John Kalinoski Scholarship Fund (transferred in 2004)	Maskery Family Scholarship Fund (2018)	Plymouth Community Club Scholarship Fund (transferred in 2003)
Conn Acoustics Scholarship Fund (2006)	Kalt Moreau Family Scholarship Fund for Education (2018)	Elizabeth I. & Louis J. Matt Medical Scholarship Fund (2007)	Alice C. Pulsifer Memorial Scholarship Fund (transferred in 1997)

*continued on next page*



Dawn Leger presented Rachel Lewis with a scholarship from the Leger Initiative for Education Fund at the 2018 Scholarship Reception.



Isabella Castrogiovanni received the Peg Coughlin Nursing Scholarship from Mary Smith, Peg's daughter, at the 2018 Scholarship Reception.



Max and Ruth Rabin Scholarship Fund (2006)	Clement J. Roy Scholarship Fund (2012)	The Southington Observer/ StepSaver Scholarship Fund (2005)	Kristen Warner Scholarship Fund (2004)
Radcliff Family Education Fund (2002)	Saint Matthew School Scholarship Fund (2000)	Jay W. & Elizabeth M. Tyrrell Scholarship Fund (2011)	John Whitcomb Scholarship Fund (2001)
Radcliff Plainville High School Fund (2006)	Dora Schubert Scholarship Fund (transferred in 2017)	Louise (Humphrey) Van Gorder Music Camp Scholarship Fund (2014)	Eva Brodowicz Wickwire Volunteer Scholarship Fund (2015)
Louis J. Rascoe Scholarship Fund (2005)	Lawrence (Larry) Selza Memorial Scholarship Fund (2010)	Dr. Joan T. Wallace Prize for Highest Achievement in English at Southington High School (2014)	Pat & Bob Wollenberg Scholarship Fund for Special Education (2018)
Julie A. Roche Nursing Scholarship Fund (2014)	Glo Sessions Fund for Art Education (2012)	Peggy Ann Walsh Memorial Scholarship Fund (2011)	Yarde Metals Memorial Scholarship Fund (2005)
Douglas Roland Aid for the Trades Scholarship Fund (2009)	Jill Lynne Shackett Educational Scholarship Fund (2013)		

### UNRESTRICTED COMMUNITY FUNDS

**These funds are flexible and responsive to emerging and changing community needs. The Foundation distributes grants from these funds where they are needed most.**

Wally Barnes Fund for Community Leadership Initiatives (2013)	Formagioni-Lodovico Family Fund (2009)	Money in Motion Fund (2015)
Bristol Brass General Grant Fund (1998)	Jim & Eleanor Frawley Community Fund (2010)	Karen and Kim Murphy Family Charitable Fund (2016)
Bristol Savings Bank Fund (1996)	Gnazzo/Reidy Charitable Fund (2000)	Tedesco-Gallant Charitable Fund (2005)
Angela and Al Caruso Family Charitable Fund (2006)	Main Street Community Foundation Memorial Fund (2008)	Turkus Family Fund (2000)
Ronald F. and Emilie P. Duhaime Family Fund (2003)	Edward W. and Audrey K. Mink Memorial Fund (2000)	Pat & Bob Wollenberg Family Fund for the Community (2018)

STEWARDSHIP OF ASSETS

*Careers for Cambridge* is Bristol Boys and Girls Club Family Center's job-readiness and career-exposure program that was held at Cambridge Park, the largest public housing site in Bristol. *Careers for Cambridge* offered fun and interactive activities for youth ages 11 to 18 to explore a broad range of career areas, match their interest to potential career opportunities and identify the skills and education needed for their particular career path. The program also included mindfulness activities, mentorship, nutrition facts and field trips. This program was supported with a \$4,000 grant from the Douglas and Noreen Schumann Special Interest Fund.



### SUSTAINABILITY FUNDS

**Sustainability Funds strengthen the Foundation's role as a funder, community leader, convener and advocate.**

Barnes Group Inc. 150th Anniversary Fund (2007)	Dave and Edith Scarritt Fund (2004)
Main Street Community Foundation Endowment Fund (2000)	Yarde Metals Community Support Fund (2005)

## Burlington Community Fund

The Burlington Community Fund is a growing endowment fund, established in 2011, to provide a permanent source of funding for charitable projects and programs that will enhance the quality of life for Burlington residents. The Advisory Council for this fund identifies needs in the community and evaluates grant applications for local support. In 2018, \$4,500 was awarded from the Fund to five local organizations. Since its founding seven years ago, the Burlington Community Fund has awarded a total of \$24,600. The Fund's donors and volunteers work together to help all those in need in the Burlington community.

This year, in addition to the grants awarded, the Fund partnered with the Burlington Chamber of Commerce to put together and deliver 162 "Welcome to Burlington" bags to newcomers. These bags were filled with information about the town and local businesses. The Fund also hosted an Opioid Addiction Forum at Lewis S. Mills High School in January. Over 50 people attended the Forum, which included panelists from the Department of Mental Health and Addiction Services, the North Central Regional Mental Health Board, Catalyst Counseling of CT, the Burlington Volunteer Fire Dept and Connecticut State Police.

"This panel did much to help parents realize that they are not alone and that there are many community resources available to help," said Janet Schwartz, Treasurer of the Burlington Community Fund.

To see a list of all grants awarded from the Fund, see page 13 of this Annual Report.



### 2018 Burlington Community Fund Advisory Council

Jonathan Schwartz, *Chairman*  
 Paul Rochford, *Vice Chairman*  
 Janet Schwartz, *Treasurer*  
 Jacky Quinn, *Secretary*  
 Robert Caiaze  
 Sandy Hierl  
 Colleen Magnus  
 Ann Mazeau  
 Sanford Mazeau

Mary Peterson  
 Pat Small  
 Rev. Wendell Taylor  
 Sam Dorman,  
*Student Representative*  
 Amanda McCard,  
*Student Representative*  
 Allison Rau,  
*Student Representative*

## Men & Boys' Fund

In 2016, a group of local men came together because they were concerned about the state of men and boys in our society. With their leadership, the Men & Boys' Fund (MBF) was established and its mission is to: make it possible for men and boys to improve the quality of their lives, increase self-sufficiency, and make a positive difference in their community.

In June, the MBF hosted an event called "Raise a Pint" at Main Street Pint & Plate Restaurant — their first big fundraiser. It was a success with over 50 people attending. Chris Amorosino, the Communications Chair for the Men & Boys' Fund, reflected on 2018: "This past year, we doubled the amount we were able to award in grants. The Fund awarded \$6,000 in 2018 and \$1,500 in immediate response grants. The community has been amazingly generous. 2018 was our second year of fundraising and the total fund has reached more than \$50,000."

The Men & Boys' Fund awarded grants to four organizations, which are listed on page 13. Amorosino said, "We are proud to support all of these programs. One example is the program at Bristol Youth Services called Skills to Pay the Bills. This is for male high school students to improve their decision making skills. The program teaches them how to develop healthy relationships, how to manage money, eat well, etc. It gives the students a better opportunity to learn how to be productive workers and engaged citizens, who contribute to their community."

When asked about the Fund's immediate response grants, Amorosino explained, "The grants are a small way to make a big difference. Two of these really stood out. One was a local high school student who had graduated but he had no parental support, so he was struggling. The Men & Boys' Immediate Response Fund awarded a \$200 grant to support the purchase of clothes for interviews, so he could get a job. Another was a man who had been homeless for 10 years. He was ready to move into his own apartment but a rental application fee was a barrier. The Fund was able to award a grant to support that need."



### 2018 Men & Boys' Fund Advisory Board

Rodger Stotz, *Chair*  
 Doug DiPaola, *Vice-Chair*  
 Larry Covino, *Treasurer*  
 Rob Sanderford, *Secretary*  
 Chris Amorosino  
 Whit Betts  
 Rob Caiaze

Rich Carmelich  
 Chris Cassin  
 Hal Kilby  
 Steve LePage



STEWARDSHIP  
OF ASSETS





## Plainville Community Fund

The Plainville Community Fund was established in 2006 by a group of community leaders to create a resource for charitable programs and projects that would enhance the quality of life for Plainville residents. For twelve years, grants have been made from this Fund to make the community stronger and to help meet the changing needs of Plainville residents. The Plainville Community Fund is honored to be a beneficiary of the Annual Plainville PumpkinFest. In 2018, \$8,000 was raised and donated to the Fund.

Thanks to the money raised from the PumpkinFest and other fundraising initiatives, this past year \$10,000 in grants were made to help struggling residents receive holiday food baskets, bring a domestic and teen dating violence prevention program to local schools and make adaptations and custom equipment for wheelchair-bound school aged students. A full list of the grants awarded from this Fund can be found on page 13 of this Annual Report.

Since its establishment, the Plainville Community Fund has distributed nearly \$70,000 in grants to better the lives of Plainville residents.



### 2018 Plainville Community Fund Advisory Council

Byron Treado, *Chair*  
Robyn Poulos, *Vice Co-Chair*  
Deanna Gelt, *Vice Co-Chair*  
Richard Piotrowski, *Treasurer*  
Carol Stauble, *Secretary*  
Helen Bergenty  
Alice "Dolly" Chamberlin  
Simonne Corriveau  
Mary Couture

Lynn Davis  
Val Dumais  
Kenneth Gnazzo  
Robert E. Lee  
Kelly Perrotti  
William Petit  
Andrea Wasley  
Jim Welch

#### Distribution Committee

Deanna Gelt, *Chair*  
Simonne Corriveau  
Mary Couture  
Lisa Mandeville  
Kelly Perrotti  
Richard Piotrowski  
Robyn Poulos  
Carol Stauble

## Make A Mark Region 10 Enrichment Fund

The Make A Mark Region 10 Enrichment Fund is dedicated to providing a source of funding for expanded educational opportunities for Region 10 students. Established in 2009, the Fund seeks creative and innovative instructional practices that will enhance the learning of students. Grants have been awarded to teachers, administrators, guidance counselors, other school personnel, or students in support of projects that would not normally be funded by the Region 10 Board of Education budget.

In 2018, 14 grants totaling \$6,235 were awarded throughout the Region 10 School District and to see a full list of the grants awarded from this Fund, see page 13. These were made possible with donations from individuals, families, and businesses, as well as fundraising events, from the towns of Burlington and Harwinton. As residents come together to support their shared school district, it truly creates a united sense of community. Since its establishment, the Fund has awarded nearly \$40,000 in grants, impacting a student population of 3,000.



### 2018 Make A Mark Region 10 Enrichment Fund Advisory Committee

Colleen Verweris, *Chair*  
Bruce Burnett, *Vice Chair*  
Kelly Fecteau, *Treasurer*  
Stephanie Cowger, *Secretary*  
Heather Carr  
Lori Cizeski  
Arthur Funk, Jr.  
Susan Geissler  
Brennan Glasgow  
Paul Honig

Megan Mazzei  
Tania McNaboe  
Kristi Searle  
Alan Beitman,  
*Superintendent of Schools*  
Michael Criss,  
*Harwinton First Selectman*  
Ted Shafer,  
*Burlington First Selectman*

#### Student Representatives

Holden Cowger  
Sam DiSorbo  
Amanda Fecteau  
Jack Foley  
Lucy Gottfried  
Nathan King  
Grace Kryzanski  
Aidan O'Connor  
Josh Schibi

STEWARDSHIP OF ASSETS



## Bradley Henry Barnes & Leila Upson Barnes Memorial Trust

The mission of the Bradley Henry Barnes & Leila Upson Barnes Memorial Trust is to support the health and well-being of Southington residents. The Trust was formed in 1973 through the Last Will and Testament of Bradley H. Barnes, a lifelong Southington resident who cared deeply about his community. In January of 2004, the Foundation became the court appointed trustee of the Trust and since that time has been carrying out the legacy of Bradley H. Barnes through grants made in the Southington community. Over 20 nonprofit organizations have benefitted from grants made by the Trust since 2004.

In 2018, there were several first-time grantees who received either capital or program support for the following vital projects:

**The Arc of Southington** was awarded **\$75,000** to make critical renovations to their office space in Southington, allowing them to comply with ADA requirements and increase program space for clients.

**Bread for Life** received **\$21,300** to expand their weekly meal program and to purchase new appliances and medical equipment, which are essential to serving their primarily homeless population.

**Easterseals of Greater Waterbury** benefited from **\$25,000** to provide financial assistance to Southington residents receiving audiological services.

**Prudence Crandall Center** received **\$37,500** to support their domestic violence intervention and prevention services in the Southington schools and community.

Grants from the Trust have traditionally fallen within one of the following community-identified health areas: Accessibility and affordability of health care; substance abuse prevention and mental health needs; health care for an aging population; better integrated health care delivery; and education about existing services. Grants made in 2018 reflect an expansion of the grantmaking strategy to also support the “social determinants” of health, which are conditions in our social and physical environment that promote overall health, and quality of life (such as availability of healthy food, adequate transportation and stable housing). Studies have shown that these “social determinants” of health can have a profound impact on an individual’s health outcomes. As a result of this focus, **\$48,098** was awarded to **United Way of Southington** for a senior transportation program, which provides no-cost rides to medical appointments, pharmacies and to visit loved ones in care facilities.

In addition, the following grants were also awarded from the Barnes Memorial Trust in 2018:

**The Early Childhood Collaborative of Southington (ECCS)** was awarded **\$25,000** to continue providing educational seminars on health and well-being related topics that support Southington’s young children and their caregivers.

**Hartford HealthCare Senior Services** received **\$75,000** to complete renovations at Southington Care Center to create a warm and calming environment for dementia patients, and **\$10,000** to support the 2019 Healthy Family FunFest.

**LISA, Inc. (Living in Safe Alternatives)** was the recipient of **\$45,900** to continue the 1-2-3- Prevention, Intervention & Recovery program for teens in collaboration with Southington Youth Services Bureau and the STEPS Coalition.

**LiveWell Alliance Inc.** received **\$115,000** to continue the Dementia Friendly Southington Initiative, which strives to make Southington a welcoming and supportive community for people with dementia.

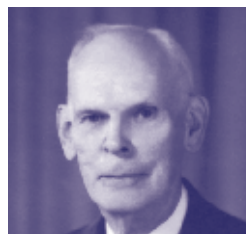
**Southington-Cheshire Community YMCAs** established a Diabetes Prevention program with a **\$29,500** grant.

**Southington Community Cultural Arts (SoCCA)** received **\$105,900** to continue the All Access program for adults with disabilities.

**Wheeler Clinic** was awarded **\$80,000** to continue the Southington Health Outreach Project.

Lastly, \$3,750 provided community leadership sponsorships in Southington, making total grants awarded for the year **\$696,948**.

A Southington senior received a no-cost ride from a volunteer for Senior Transportation Services, which works in partnership with the United Way of Southington. These rides allow seniors to go to medical appointments, pharmacy visits, banks, hairdressers/barbers, care facilities to visit loved ones and more.



Bradley and Leila Barnes



### 2018 Bradley Henry Barnes & Leila Upson Barnes Memorial Trust Advisory Committee

William J. Tracy, Jr., *Chair*  
 Sherwood Anderson  
 Valerie A. DePaolo  
 Pamela Higgins  
 Mary Ellen Hobson  
 Janis L. Neri  
 Susan Gagnon Ondusko  
 George Skarvinko  
 Barry Thompson  
 John D. Scarritt, *ex officio*  
 Susan D. Sadecki, *ex officio*

STEWARDSHIP  
OF ASSETS

## Women & Girls' Fund

The Women & Girls' Fund was established in 2001 as a community-based endowment of the Main Street Community Foundation. The Fund supports programs and initiatives that benefit females of all ages in Bristol, Burlington, Plainville, Plymouth, Southington and Wolcott. The Fund taps into the power of women and girls to strengthen their communities by:

- Funding programs for women and girls focused on education, career planning, personal finance, parenting, literacy and health and wellbeing.
- Empowering and celebrating women by hosting events such as the annual WOW fundraiser, publishing articles, sponsoring community gatherings and by inviting women to volunteer on the Women & Girls' Fund Advisory Board and committees.
- Increasing public awareness of the needs that exist for women and girls and the opportunities available to help bridge the gap.

Since its establishment 17 years ago, the Women & Girls' Fund has provided over \$500,000 in funding to nearly 90 organizations and programs. The funds for these grants come from four sources – the proceeds of the annual WOW event, the endowment and two other named funds whose distributions support initiatives identified by the Women & Girls' Fund.



### John & Gloria DiFrancesco Fund for Women and Girls

This permanent fund was established in 2011 by John and Susan Scarritt to honor Susan's parents, Gloria and John DiFrancesco, on the occasion of the 10th Anniversary Year of the Women & Girls' Fund.



### Barbara Hackman Franklin Fund for Women

This fund was established in 2011 in honor of Barbara Hackman Franklin by her family on the occasion of the 10th Anniversary Year of the Women & Girls' Fund.

These two funds were established to benefit the initiatives identified by the Women & Girls' Fund Advisory Board. It serves as a way to leave a legacy and create lasting change while supporting something important to these families, and taking advantage of the incredible leadership, process and procedures of the Women & Girls' Fund. In 2018, \$52,180 in program grants were awarded to 19 organizations.

In addition, three additional named funds at Main Street Community Foundation supported proposals submitted to the Women & Girls' Fund. The total amount awarded to the 19 organizations was \$55,227 and the listing of these grants can be found on pages 13-14 of this Annual Report.

In addition to the competitive grant cycle every fall, the Women & Girls' Fund Advisory Board established the Women & Girls' Immediate Response Fund in 2002, which awards small grants to help women and girls who may be in need due to a particular life situation or unexpected financial hardship throughout the year. Preference is given to women and girls with needs in the areas of health and safety, self awareness, empowerment and enhancing opportunities.

Like the named funds above that benefit the grant cycle, the Donna Borysewicz Fund for Women was established to benefit the Women & Girls' Immediate Response Fund.



### Donna Borysewicz Fund for Women

This fund was established in 2015 in memory of Donna Borysewicz by her family and friends upon her passing after a courageous fight with a chronic illness. It was created in remembrance of her passion and love for helping others, especially women and children.



### 2018 Women & Girls' Fund Advisory Board

Julia Weston, *Chair*  
Susan Moreau, *Recording Secretary*  
Lisa Palen, *Treasurer*  
Dawn Nielsen, *Past Chair*  
Jarre B. Betts, *Member at Large*

Sofia Bayne  
Catherine Cassin  
Angela Chapman  
Kimberly Lewis

Marilyn Perzan  
Ursula Sowinski  
Sharon Stotz  
Susan Winn

Over 400 people attended the 2018 Wonder of Women (WOW) event on April 24, 2018.



# Friends of the Foundation

We gratefully acknowledge the **Friends of Main Street** listed on this page that generously supported our 2018 annual Friends Appeal. This annual campaign, overseen by past board member and founder Tom Barnes, provides necessary administrative financial support to advance the charitable activities of the Foundation to better serve your communities.



In appreciation, a donor and friends reception is hosted annually by a Foundation supporter. In 2018, the reception was hosted at Michael and Susan Brault's beautiful home in Burlington. The reception gave the Foundation the opportunity to sincerely thank its many campaign donors and volunteers, especially all those who support the annual Friends Appeal and believe in the importance of local philanthropy. Through your contributions, you are generating good and creating possibilities for all.

Special appreciation to Dawn Nielsen for designing the invitation; and Garrett Printing & Graphics for their donation of printing. Sincere gratitude to Michael and Susan Brault for their generosity and hospitality that made this year's Friends Reception a memorable experience.

Many thanks to all who support our annual Friends Appeal and who value the work of the Foundation. You can be proud of the comprehensive center for leadership and philanthropy you have created and helped to sustain for the benefit of your local communities both now and forever.

## PARTNER IN PHILANTHROPY (\$2,500+)

Elizabeth Barnes  
Barnes Group Foundation, Inc.  
Harry F. Barnes & Carol H. Barnes Family Foundation  
Thomas and Melanie Barnes  
Sky Bight Foundation, Inc.

Janis Neri  
New England Spring & Metalstamping Association  
Kathryn and Edward Reinhard  
Ezra Ripple  
Susan and Ronald Sadecki  
Carl and Sharon Sellberg  
Carl Sokolowski  
Tollman Spring Co., Inc.  
U.S. Trust Bank of America Private Wealth Management  
William and Thomas Delfino, LLC

## COMMUNITY INVESTOR (\$1,000-\$2,499)

Anonymous  
Anonymous 2  
Stephen Allaire and Mary Ruth Connolly  
Kenneth and Mary Benoit  
Bryan Bowerman  
Michael and Susan Brault  
Robert and Rebecca Caiaze  
Charles and Rosamond Glendon  
Jeanne Radcliff  
James and Kathleen Sayre  
John and Susan Scarritt

## AMBASSADOR (\$100-\$499)

Cathryn Addy  
Denise and James Albert  
David and Kristen Aldieri  
Doris Aldieri  
Donna and Kylie Ayer  
Kurt and Jean Barwis  
Sia and Charles Bauer  
BBK - Bob Alim, Bob Boudreau, Kevin Prior  
Denise and Alan Bednaz  
Victoria Biondi  
Gary Boukus  
Bradley, Foster & Sargent, Inc.  
Nancy Brault  
Bristol Recovery Club Inc.  
Peter and Trudy Brown  
Todd Burton  
C & H Electric, Inc.  
C.V. Mason & Co., Inc.  
Thomas and Allison Calvello  
Alice Chamberlin  
Armann Ciccarelli and Valerie Vitale  
City Hardware, Inc.  
Connecticut Lighting Center, Inc.  
Country Manor Realty, Inc.  
Crescent Manufacturing Operating Co.  
George and Patricia Crowley  
DACRUZ Manufacturing  
Bruce and Yanina Daigle

Daniel and Sally Daigle  
Kristine and Peter Dargenio  
Phyllis and Peter Del Mastro  
Valerie DePaolo and Michele Boisvert  
Joseph and Amy DiFazio  
Mark and Annsue DiVenere  
Theodore and Diane Donovan  
Susan and Val Dumais  
Patricia and William Dunn  
Cary Dupont  
Richard and Sue Dziura  
Diane and James Eitvydas  
Virginia and Geoff Fitzgerald  
Scott and Karen Fournier  
Lillian Fox  
Funk Funeral Home  
Timothy and Valerie Furey  
Mary Lynn and Gary Gagnon  
Timothy Gamache  
Donald and Margaret Goranson  
Roger and Arlene Grandbois  
John and Barbara Greenlaw  
Wilma and Dennis Hart  
Mary Ellen Hobson  
Barbara Keiffer  
Harold Kilby  
Lisa and David King  
Leslie and Sally Kish  
Jay Kolakoski  
Edward Krawiecki  
Ercole and Pamela Labadia  
Michael Lambert  
Thomas and Geraldine LaPorte  
Steven and Donna Lasewicz  
Darlene Lassy  
Louise Laurentano DeMars  
John and Sandra Leone  
Kelly and Brian Leppard  
John and Barbara Letizia  
Lawrence and Eileen Linnetz  
Anthony and Judith Lodovico  
Edward Lorenson  
Harold and Phoebe Lorenson  
Diane and Raymond Macklosky  
Laura Maglio

Mark Malley  
Lexie Mangum  
Masotti Electric, LLC  
Paul and Laura Mastropolo  
Julie and Patrick Matthews  
Sanford and Ann Mazeau  
Jacqueline and David Merchant  
William Micari  
Richard and Patricia Miller  
Townsend Mink  
Victor and Kathleen Mitchell  
Kim Murphy  
Frances Nadeau  
Elliott and Patricia Nelson  
Thomas and Marie O'Brien  
Sally and Terry O'Connor  
Dr. Glen M. Palmisano  
Rhonda and John Pilkington  
Posner, Henderson & Goslee Dentistry PC  
James and Mary-Etta Potter  
Deborah and Marino Prozzo  
James and Ann Pryor  
Quinoco Inc.  
Samantha Rajotte  
Riverside Investment Services LLC  
Jeanne and Gary Roberge  
Rachel and Jay Sattler  
Noreen Schumann  
Scott Funeral Home, Inc.  
Jennifer Scully  
Susan and Francis Scully  
Lee Sinkwich  
John and Mary Smith  
Murdo and Patricia Smith  
Burton and Freya Sonenstein  
Southington Tool & Manufacturing  
Sharon and Rodger Stotz  
Barry Thompson and Therese Pac Ann Tracy  
William and Kim Tracy  
Byron and Debra Treado  
The Ultimate Companies, Inc.  
Arthur and Patricia Ward

Webster Bank  
Robert and Janet Williamson  
Maureen and Brian Wood  
Christopher Wright

## FRIEND (UP TO \$100)

Richard and Barbara Alden  
Lois Allaire  
Cynthia Bombard  
Bertrand and Doris Bouvier  
Bristol Adult Resource Center, Inc.  
Olga Callender  
Rosemarie Cassin  
Patricia Chapman  
John and Nancy Chiero  
Raymond and Dorothy Ciecchoski  
Barbara and Timothy Denehy  
Robert and Theodora Douglas  
Michael Dube and Karen Samul  
Francesca Heap  
Maryellen Holden  
Kimberly and Hopeton James  
Kathleen and Kevin Kerchaert  
Christopher and Leah LaPlaca  
Richard and Kim Larkin  
Bonnie and John Lodovico  
Angie McCormack  
Craig and Laura Minor  
Dawn and Eric Nielsen  
Catherine and James O'Hara  
Mark and Monique Peterson  
Betty Radcliff  
John and Mary Ellen Riback  
Maryann Seaman  
Daniel and Jessie Smiley  
Maureen Sonstrom  
Deborah Spooner  
Donna Storms  
Ruth Timme  
Diane and Joseph Wasta  
Marian Whitcomb  
Mark and Lorna Zammatt

STEWARDSHIP OF ASSETS

# Gifts Received in 2018

We gratefully acknowledge the support of our donors and thank them for their gifts during the 2018 calendar year. If we have inadvertently failed to note your contribution, please let us know so that we may acknowledge it in a future publication.

## A

Anonymous  
Terriann and Nelson Abarzua  
Robin and Joseph Adamo  
Michael and Eileen Adams  
Terri and Joseph Adams  
Cathryn Addy  
Samuel Adlerstein and Mariann Clubb  
Advanced Behavioral Health, Inc.  
Advanced Welding LLC  
Aetna Inc.  
Thomas Agresta and Miwako Ohta-Agresta  
Denise and James Albert  
Justin and McKinley Albert  
Richard and Barbara Alden  
David and Kristen Aldieri  
Doris Aldieri  
Lois Allaire  
Stephen Allaire and Mary Ruth Connolly  
David Allen  
Allied World  
AmazonSmile Foundation  
Margaret and Chris Ambrose  
Chris and Mari Amorosino  
Sandra Anderson  
Sherwood and Kate Anderson  
Shirley Anderson  
Philip and Linda Andryc  
Aqua Turf Country Club  
Denise Atkinson  
Atlantic Precision Spring, Inc.  
Lisa Attle  
Jeanine and Michael Audette  
Jasmin Autunno  
Donna and Kylie Ayer

## B

James and Donna Baccei  
Judi Baker  
Donald Balaski  
John and Allison Banta  
Judith Barmore  
Elizabeth Barnes

Fuller and Janis Barnes  
Thomas and Melanie Barnes  
Harry F. Barnes & Carol H. Barnes Family Foundation  
Tom & Melanie Barnes Family Fund at Main Street Community Foundation  
Barbara and David Barton  
Kevin and Michelle Bartucca  
Kurt and Jean Barwis  
Amity Bateman  
Sia and Charles Bauer  
Patricia and William Bayne  
Sofia and Scott Bayne  
BBK - Bob Alim, Bob Boudreau, Kevin Prior  
Beacon Electric, Inc.  
Arthur Becker  
Denise and Alan Bednaz  
Alan and Caroline Beitman  
Carol Bell  
Benevity Community Impact Fund, a fund of American Endowment Foundation  
Kenneth and Mary Benoit  
Eric and Jennifer Benson  
Debra-Lynn and Dan Benvenuto  
Robert and Lorraine Bertini  
Leonard and Doris Berton  
Best Cleaners  
Kathy and Stephen Betta  
Andrew and Amanda Betts  
Jarre and Whit Betts  
Mark Bianchi  
Bigelow Tea  
Victoria Biondi  
Victoria Rose Biondi, MD & Associates/Briar Rosa  
Lucille Bissonette  
Raymond and Karen Bliss  
Mark and Nancy Blum blumshapiro  
Bob's Discount Furniture  
Jeffrey and Linda Boisvert  
C. David and Judith Bomar  
Cynthia Bombard  
Joan Bossi  
Patricia Boudreau

Steven and Ann Boudreau  
Gary Boukus  
August Bouquet  
Bertrand and Doris Bouvier  
Rick Bouvier and Joanne Voisine  
Bryan Bowerman  
Marie and Kenneth Bowes  
Robert and Brigitte Boyce  
Boys & Girls Club of Bristol Family Center  
Vivian Brackett  
Bradley, Foster & Sargent, Inc.  
Nancy Brault  
Sherri and Keith Brault  
Susan and Michael Brault  
Bread for Life  
Andrew and Karen Brecher  
Carol Brennan  
Ellen and Bill Bridgman  
Brilliant Design  
Bristol Adult Resource Center, Inc.  
Bristol Board of Education Employees Local 2267  
Bristol Hospital  
Bristol Lions Club  
Bristol Pediatric Center  
Bristol Recovery Club Inc.  
Bristol School Readiness Council  
Bristol Sports Hall of Fame  
Bristol Tramps Sports Reunion  
Bristol Yale Club c/o Bristol Yale Scholarship Fund, Inc.  
Maria Brodowicz  
Ursula Brodowicz  
Nancy Brown  
Peter and Trudy Brown  
Brown Larkin & Company  
Janice and John Bruetsch  
Carol Brunalli  
Town of Burlington 5K Run/Walk  
Burlington Chamber of Commerce  
Ronald and Lynda Burns  
Adam Burr  
Todd Burton

## C

C & H Electric, Inc.  
C.V. Mason & Co., Inc.  
Jeffrey and Sheri Caggiano  
Joseph and Carolyn Caggiano  
Joseph Caggiano  
Caiaze Family Charitable Fund at Main Street Community Foundation  
Robert and Rebecca Caiaze  
Maria and Santa Calabro  
JoAnn and Robert Calcinari  
Linda Calderoni  
Olga Callender  
Joe & Kay Calvanese Foundation  
Thomas and Allison Calvello  
Anne Marie and Brendan Canning  
Richard Caporaso  
Richard Carlson  
Kimberly and Robert Caron  
Gail and Sylvain Carriere  
Alexander and Wendy Carros  
Alexander and Angela Caruso  
Lynn Caruso  
Karen and Steven Casey  
Terry Cassidy  
Catherine and Christopher Cassin  
Rosemarie Cassin  
Sara Castle  
Judy Caturano  
CCOG Women's Health Group  
Center for Advanced Reproductive Services  
Century Spring Manufacturing Co. Inc.  
Alice Chamberlin  
Patricia Chapman  
Charities Aid Foundation of America  
Krista and Lucas Cherry  
Nancy and John Chiero  
Chippanee Country Club  
Chippens Hill Middle School  
Armann Ciccarella and Valerie Vitale  
Donna and Mauro Ciccarella  
Raymond and Dorothy Cieshoski

Cigna Foundation  
Michael and Tambyln Ciquera  
Dorothy Cistulli  
City Hardware, Inc.  
John and Lori Cizeski  
John and Marguerite Clancy  
Dennis and Eileen Cleary  
Sondra and Anton Clement  
Wyland Dale Cliff  
Carole Cloutier Boutin and Gilles Boutin  
Karen Coco  
CoilPro Machinery  
CompuMail Corp of CT. Inc.  
Janet and Lynn Simpson Conlin  
Thomas and EJ Conlin  
Conn Acoustics Inc.  
Connecticut Lighting Center, Inc.  
Connecticut Science Center  
Keri and Donald Coombs  
Carol Corliss  
Alycia and Joann Corr  
Presentacion Coughlin  
Country Gardens of Bristol, Inc.  
Country Manor Realty, Inc.  
Richard and Elaine Couture  
Jessica Covino  
Larry and Karen Covino  
Robin Cowles  
Creative Interventions, LLC  
Crescent Manufacturing Operating Co.  
Gary Crisanti  
Francine Croce  
George and Patricia Crowley  
Cindie Curtis  
Cyient, Inc.

## D

DACRUZ Manufacturing  
Betty and Victor DaCruz  
Bruce and Yanina Daigle  
Daniel and Sally Daigle  
Kevin Daly  
D'Amato Construction Co., Inc.  
Barbara Damon  
Susan Dantino





Oak Hill's adaptive Chapter 126 Sports & Fitness facility received a \$4,500 grant from the Bristol Savings Bank Fund, the Bristol Brass General Grant Fund, the Ronald F. & Emilie P. Duhaime Family Fund and the Jim & Eleanor Frawley Community Fund to support programs for veterans with disabilities. The programs are resources for the veteran and military family community specifically designed to help returning veterans get back on their feet, and to support their families during deployment. Earla, pictured here, is a veteran and Chapter 126 has become like her second family. Chapter 126 was a designated training facility for the Veteran's Golden Age games, and Earla was one of the veterans who trained at the facility before travelling to Albuquerque to participate. It was her first time leaving Connecticut since she was in active duty and her first time competing – and she received a medal!

Kristine and Peter Dargenio  
 Kathy and Kenneth Dayton  
 Nancy Dayton  
 David and Mary DeCroce  
 Noreen Dee  
 Michele and John Deeb  
 Melissa DeFeo  
 William Degan  
 Phyllis and Peter Del Mastro  
 Theresa Delfino  
 William and Dale Delfino  
 William and Thomas Delfino, LLC  
 Elizabeth Demeyer  
 Democratic Town Committee  
 Barbara and Timothy Denehy  
 Carol Denehy  
 Donna Denehy  
 Valerie DePaolo and  
 Michele Boisvert  
 DePaolo Family Foundation, Inc.  
 Dolores Dery  
 Rita Dewyea  
 Dennis and Rosalie Dezi  
 Craig Diangelo  
 Joseph and Amy DiFazio  
 Gloria DiFrancesco  
 Pasquale DiFrancesco  
 Rose DiFrancesco  
 Jennie and Daniel DiFranco  
 Linda DiMatteo  
 Douglas DiPaola  
 Disney Worldwide Services, Inc.  
 Antonio and Anne Disorbo  
 Mark and Annsue DiVenere  
 T. Denise Dobek  
 Theodore and Diane Donovan  
 Cheri Doty  
 DoubleTree by Hilton Hotel  
 Bristol  
 Robert and Theodora Douglas  
 Nicole and Justin Downes  
 Frederick Downs  
 Michael and Karen Dube

Donna and Francis DuCotey  
 DuCotey Bros. Lawn Service Inc.  
 Susan and Val Dumais  
 Melanie and Jim Dumont  
 Cheryl Dumont-Smith and  
 Edward Smith  
 Cheryl Dumont-Smith  
 Community Fund at Main  
 Street Community Foundation  
 Patricia and William Dunn  
 Priscilla and Kevin Dunn  
 Pattie & Bill Dunn Family  
 Charitable Fund at Main  
 Street Community Foundation  
 Cary Dupont  
 Diane and Robert Dupont  
 Julie and John Dutcher  
 Sarah Dyer  
 Richard and Sue Dziura

**E**

Rebecca Earl  
 Maureen Eaton  
 EdAdvance  
 Esther Eddy  
 Diane and James Eitvydas  
 Eli Terry Jr. Middle School  
 Victoria Elliot and  
 Marvin McMillen  
 Rita Elliott  
 Joanne and David Ellsworth  
 Essex Steam Train and Riverboat  
 Mary and John Etter  
 Helen Evans  
 Eversource Energy Foundation Inc.

**F**

Farmington Bank  
 John and Virginia Fasolo  
 Roger and Kathleen Fekete  
 Dominick and Judith Ferro

Ruthann Field  
 Christopher Finch  
 Fiondella Fund at Main Street  
 Community Foundation  
 First Bristol Federal Credit Union  
 Fitness on the Go, LLC  
 Virginia and Geoff Fitzgerald  
 Terry and Marguerite Fletcher  
 Teresa and Dennis Foley  
 Susan and Ned Foran  
 David and Mary Fortier  
 Gregory Fortier  
 Scott and Karen Fournier  
 Sandra Fowler  
 Lillian Fox  
 Foxwoods Resort Casino  
 Lorraine French  
 Patricia and Gary Friedle  
 Friends of the Plainville  
 Public Library  
 Arthur and Lillian Funk  
 Funk Funeral Home  
 Timothy and Valerie Furey  
 Furey Family Charitable Fund  
 at Main Street Community  
 Foundation

**G**

Mary Lynn and Gary Gagnon  
 Janet and Robert Galati  
 Timothy Galvin  
 Timothy Gamache  
 Robert Garay  
 Garrett Printing & Graphics Inc.  
 Deanna Gelt  
 Katherine and Nicholas  
 Giampetruzzi  
 Kyle Gibson  
 Barry and Linda Giordano  
 Girl Scouts of Connecticut  
 Charles and Rosamond Glendon  
 Gnazzo's Food Center

Diane and Richard Godbout  
 Kathleen Godfrey and  
 Christian Gaborit  
 Sandra Godin  
 Goggin Safety Services  
 Olga Gomelskaya  
 Ruth Ann and Harland Graime  
 Roger and Arlene Grandbois  
 Donna and Peter Gravlín  
 Nancy Graziano  
 Greater Bristol Chamber of  
 Commerce Fund at Main  
 Street Community Foundation  
 Ronald and Fonda Green  
 Green Acres Farm  
 Green Packaging, Inc.  
 John and Barbara Greenlaw  
 David Greenleaf  
 Frances and William Greger  
 Beth and James Greig  
 Monica Grezlik  
 Christine Griswold  
 Theresa Guerin  
 Alan and Kimberly Guerrette  
 Marcia Guzauckas  
 William and Sheila Guzman  
 Susan Gworek

**H**

Haldeman & Frazier Inc.  
 Anita and William Hamzy  
 Hamzy Law Firm, LLC  
 Hamzy School of Self Defense  
 John Hangen and Kathleen  
 Campbell Hangen  
 Lynn and William Hanson  
 Wilma and Dennis Hart  
 The Healing Corner  
 Francesca Heap  
 Marc Henderson and Raven  
 Roberts Henderson  
 Hennessey Memorial Charitable

Trust at Fidelity Charitable  
 Donald and Virginia Henthorn  
 Terri Hernandez  
 Keith Hershberger and  
 Kevin Green  
 Cathy Hill  
 Hill-Stead Museum  
 Mary Ellen Hobson  
 Timothy and Rosemary  
 Hokanson  
 Maryellen Holden  
 Home Depot Charity  
 Program Trust  
 Robert and Mary Houle  
 John Howard  
 Hubbard's Florist  
 David Huber  
 Armand and Sandra Hudon  
 Jean and Charles Hudon  
 William Huff  
 Ryan and Kaitlin Humble  
 Charlena Hunt  
 Lois Hunt  
 Karen Hurlbert  
 Jacqueline and Martin Hurwitz  
 Laura Hurwitz

**I**

Imagine Nation, A Museum  
 Early Learning Center  
 Georgette Ingellis

**J**

Ned Jacobson  
 Kimberly and Hopeton James  
 Tina Janezic  
 Joyce and Dennis Jasulavic  
 Nancy Jewett  
 Lisa Johnson and Bruce Zeh  
 Mark Johnson  
 Stephanie Johnson



Wendy and Joel Johnson  
Mary Jane Johnston  
Edward and Simone Jones  
Susan Jones  
Syreesa Jones  
Jones Engineering LLC  
Frank and Catharine Joslyn  
Rita Joy  
Jeremy and Irene Joyell  
Christine and Kenneth Julian

**K**

Phoebe and Richard  
Kaczypenski  
Barbara Keiffer  
Peter Kelley  
Lani Kelly  
Kathleen and Kevin Kerchaert  
Harold Kilby  
Bryan and Carrie King  
Jennifer King  
Lisa and David King  
Kinsmen Brewing  
Joan and Warren Kirschner  
Molly and James Kirschner  
Leslie and Sally Kish  
M. Hollis Kobayashi  
Joyce Kogut  
Jay Kolakoski  
KPMG LLP  
Darlene Krammer  
Edward and Sharon Krawiecki  
Atty. Edward C. Krawiecki Jr.  
David and Jodi Kryzanski  
Ellen Kuczenski  
David Kushlan

**L**

Ercole and Pamela Labadia  
Richard and Susan Lacey  
Carol Lacoss

Wilmar and Joan Lagasse  
Douglas Lahey  
Michael Lambert  
Brian and Andrea Lanese  
Florence Langridge  
Richard and Jocelyn Lanpher  
Claudia Lanza  
Christopher and Leah LaPlaca  
Thomas and Geraldine LaPorte  
Kim and Richard Larkin  
Larson for Congress  
Steven and Donna Lasewicz  
Darlene Lassy  
Louise Lauretano DeMars  
Joanne Lauretano West  
Judiann Lausier  
Morris and Patricia Laviero  
Donna Lazorik and Gail Zacharias  
John Lazorik  
Leading Ladies  
Richard Leahy & Lynne Barnes  
Leahy Family Fund of the  
Bank of America Charitable  
Gift Fund

Michael LeBlanc and Erin Crisanti  
Michael LeConche  
Robert Lee  
Dawn Leger  
John & Sandra Leone Family  
Charitable Fund at Main  
Street Community  
Foundation  
Steven and Denise LePage  
Helen Lepore  
Michael Lepore  
Rosemary Lepore and  
Gregory Szyzkowski  
Kelly and Brian Leppard  
Geraldine and Charles Letizia  
John and Barbara Letizia  
Michelle and Thomas LeVasseur  
Adeline Lewis and Richard  
Campbell

Stephen and Kimberly Lewis  
Annemarie Licini-Paris and  
Scott Paris  
Lawrence and Eileen Linnetz  
Susan Lipka  
Marilyn Lobaczewski  
Alfred Lodovico and  
Geraldine Argentina  
Anthony and Judith Lodovico  
Ashley Lodovico  
Bonnie and John Lodovico  
Joseph Lodovico  
Michael and Wendy Lodovico  
Virginia Loman  
Bill and MariaTeresa Lombardi  
LynnMarie Lopatosky  
Edward and Laura Lorensen  
Harold and Phoebe Lorensen  
Eileen Lovley  
Cynthia and Dom Lucenti  
Sarah Lucian  
Stacy Lucid

**M**

M.A.B. Designs  
Britt MacKenzie  
Diane and Raymond Macklosky  
Laura Maglio  
Colleen and Robert Magnus  
Charles and Winifred Maher  
Jeffrey and Joyce Maher  
Maletta & Company  
Mark Malley  
Nicole Malvezzi  
Manafort Family Foundation  
Mancuso & Ascii LLC  
Lexie Mangum  
Anthony Maniscalco  
Colleen and Mark Maniscalco  
Cynthia Manning  
Susan and Carl Marinelli  
Frederick and Patricia Markowich

Daniel and Sandi Marseglia  
Linda Martin  
Margaret Maruzo  
Paul Maskery  
Scott and Jennifer Maskery  
Masotti Electric, LLC  
Lisa Mastrianni  
Paul and Laura Mastropolo  
John and Sharon Mattas  
Julie and Patrick Matthews  
Nicholas and Cheryl Maturro  
Sanford and Ann Mazeau  
Rae Allyson McCarthy  
Barbara McCauley  
Kevin and Jacqueline McCauley  
Michael McChesney  
Angie McCormack  
Janice and Larry McDonnell  
Robert and Donna McHugh  
Janice McMahan  
Karin McMaster  
Diane McNicholas  
Donna and David Medeiros  
Joshua Medeiros  
Medexpress Urgent Care  
James Melzen and  
Mark Humphrey  
Linda Mendelsohn  
Eileen Mengali  
Lisa Menillo  
Jacqueline and David Merchant  
The Merck Foundation  
Merrill Lynch Wealth  
Management  
Nancy and Jeffrey Merrow  
Robert and Carol Messier  
R. David and Marilyn Methé  
Metro Bis  
Amanda Meusel  
Micari Financial Group, LLC  
Catherine Michanczyk  
Michael Michanczyk  
Roger Michele

Nancy and David Micloskey  
Terrance and Deborah Miggins  
Julie Mike  
Estate of Kristen Milano  
Cynthia and David Milewski  
Richard and Patricia Miller  
William and Beverly Miller  
David Mills  
Catherine and Gerard Milne  
Townsend Mink  
Laura and Craig Minor  
Victor and Kathleen Mitchell  
Marybeth and Robert Mongillo  
Mongillo Foundations LLC  
Alex and Mary Jane Monico  
Mary and Curvin Montgomery  
Brenda Moore  
Kendra Morales  
Elizabeth Morancy  
Susan and Mark Moreau  
Robert Morton  
Move Forward, LLC  
Munson's Chocolates  
Francis and Mary Ann Murphy  
Kim Murphy  
Mystic Seaport - The Museum  
of America and the Sea

**N**

Frances Nadeau  
Laurie and Leroy Nadeau  
Amanda Nardozi-Foster  
Nature's Spa  
James and Johanna Needham  
Elliot and Patricia Nelson  
Janis Neri  
New Britain Museum of  
American Art  
The New England Carousel  
Museum  
New England Spring &  
Metalstamping Association

No one has ever become  
poor by giving.

Anne Frank





The Lock Museum of America in Plymouth has created an entertaining way for the public to learn about the history of lockmaking – an adventure room. The Museum opened *The Lock Museum Adventure*, an interactive game where puzzles and riddles are deciphered to open locks and antique safes to solve a mystery within five rooms in the Museum. As this game becomes more popular, more and more visitors are coming to the Museum, which preserves the history of lockmaking, especially its contribution to the industrial heritage of central Connecticut, and houses the largest collection of locks and keys in the United States. To enhance visitor experience and make the exhibits more attractive and easier to see, a \$1,500 grant from the Bristol Brass General Grant Fund was awarded to the Museum to provide new LED lighting for display cases.

Michael and Colleen Nicastro  
Dawn and Eric Nielsen  
David and Sharon Nocera  
Dolores and Patsy Nocera  
Joline and James Nocera  
June Norris  
Jack and Terry Norton  
Nutmeg Spice Company

**O**

Susan and Richard O'Brien  
Thomas and Marie O'Brien  
Sally and Terry O'Connor  
Catherine and James O'Hara  
Paula O'Keefe and Michael Cavallari  
Gordon Oliver  
One Fifty Central LLC  
Eleanor O'Regan  
David Orié and Samantha Colgan  
Doris and Edward Otto  
Cathleen Owens  
Frank and Lynn Owsianko  
Michael and Cheryl Owsianko

**P**

Palace Theater  
Lisa and Christopher Palen  
Dr. Glen M. Palmisano  
Sebastian and Karolina Panioto  
Parkside Cafe  
Dean and Tyhise Parmer  
Charles Patenaude  
Sharon Pearson-Waller  
Kristen Peck  
Susan and Ronald Peck  
James Pelletier

Steven and Katie Pepe  
Perfectemp, Inc.  
Sandra Perillo-Simmons  
Dominic and Cynthia Perno  
Steven Perruccio  
Effie Peshka and Cynthia Facey  
Peter Fredericks Salon  
Lynne Peters  
Marguerite Petersen  
Edwin and Nancy Peterson  
Jeremy and Aeja Peterson  
Mark and Monique Peterson  
Tara Peterson  
William and Barbara Petit  
Petit Family Foundation  
Carmela Petrucelli  
Cecelia Petrucelli  
Lynn Petrucelli  
Mary-Alice Petrucelli-Timek and Craig Timek  
Elizabeth Phelan  
Patti and Joseph Philippon  
Conrad Picard  
Byron and Janice Pierce  
Elisa Pierce  
Rhonda and John Pilkington  
Richard and Claudia Piotrowski  
Plainville PumpkinFest  
Donna and Brian Plourde  
Rene and Therese Poirier  
Deborah and John Porrini  
Michael and Vivian Positano  
Posner, Henderson & Goslee  
Dentistry PC  
James and Mary-Etta Potter  
Sharon Poupart  
Roger and Virginia Powell  
Diane Pratt  
Kate and Kevin Pray  
Premier Limousine

John Prior  
Kathryn and Gregory Provencal  
Deborah and Marino Prozzo  
James and Ann Pryor  
Pure Skin Med Spa

**Q**

Quinoco Inc.

**R**

A.J. Raccio  
Betty Radcliff  
Elizabeth and Frank Radcliff  
Estate of Mabel Elizabeth Radcliff  
Jeanne Radcliff  
Radcliff Wire, Inc.  
Jerald and Carroll Rafaniello  
Samantha Rajotte  
Stephen and Allen Raney  
Christopher and Diane Ranft  
Louis and Lynn Rascoe  
James and Frances Raymond  
Raymond James  
Julie Rebelo  
Rita Redler  
Estate of David M. Reidy  
Kathryn and Edward Reinhard  
John and Mary Ellen Riback  
Alicia Ricciardi  
Linda and Richard Rich  
Richard Enterprises Inc.  
Coral and David Richardson  
Janet Riemer  
Ezra Ripple  
Michael and Diane Rivers  
Riverside Investment Services LLC  
Doran and Ellen Robbins

Jeanne and Gary Roberge  
Kevin Roche  
Paul and Jodi Rochford  
Susan Roesch  
Ralph and Linda Roland  
Roland Dumont Agency  
Allison Ross  
James and Ann Ross  
Rowley Spring & Stamping Corporation  
Scholarship Fund  
Nancy Roy  
Roz & Ali  
Richard and Lea Rubenstein  
Elizabeth Rudden

**S**

Dan S  
Susan and Ronald Sadecki  
Maria Salice  
Joseph and Lois Salvatore  
Robert and Janice Sanderford  
NiKeisha Sandy  
Rachel and Jay Sattler  
Cathy Savino  
James and Kathleen Sayre  
Gina Scalia  
John and Susan Scarritt  
Tamara and Alan Schmidt  
Jed Schulman  
Noreen Schumann  
Jonathan and Janet Schwartz  
Raymonda Schwartz  
Scott Funeral Home, Inc.  
Jennifer Scully  
Susan and Francis Scully  
Scully Travel LLC  
Maryann Seleman  
H. Andrew and Karen Selinger  
Carl and Sharon Sellberg

Barbara Sergio  
Don and Roxanne Sessions  
Lois Settle  
Thomas Shackett  
Amy Shackett Curtis and Jay Curtis  
Theodore Shafer  
Arthur and Sharon Shahverdian  
Shannon's Diamonds & Fine Jewelry, Inc.  
Shear Designs  
Michael Sherman  
Sally Shernow  
Mary Shopis  
John and Barbara Silkauskas  
Elaine Silver  
Simsbury Bank  
Lee Sinkwich  
Kate Sirignano  
Sky Bight Foundation, Inc.  
Sky Sourcing Services LLC  
Mark Smaldone and Patricia Bechard Smaldone  
Daniel and Jessie Smiley  
Dianne and Ron Smith  
John and Mary Smith  
Mary Smith  
Murdo and Patricia Smith  
Oliver Smith  
Kim Sokol  
Carl Sokolowski  
Burton and Freya Sonenstein  
Maureen Sontrom  
Kathi Sorey Associates  
Theresa and Carlos Soto  
Linda and Donald Soucy  
Southington Arts Council  
Southington Tool & Manufacturing



STEWARDSHIP  
OF ASSETS





STEWARDSHIP OF ASSETS



Ursula Sowinski  
 Bette Spero  
 Deborah Spooner  
 Matthew and Elaine Sportelli  
 Marie Spratlin Hasskarl  
 Springfield Spring & Stamping  
 St. Faustina Parish  
 St. Joseph School  
 St. Paul Catholic High School  
 Martha and Paul Stansel  
 Irelsa and Christopher Stephens  
 Lorna Sterling  
 Karen Stevens  
 Laurie Stickle  
 Doreen and Stanley Stickney  
 Richard and Jayne Stocker  
 The Stocker Foundation  
 Donna Storms  
 William and Angela Stortz  
 Allison Stotz  
 Rodger and Sharon Stotz  
 Mary Stratton  
 John and Melissa Stubbs  
 Michael and Mary Suchopar  
 Sarah Sullivan and David Thompson  
 Laura Summers  
 Susco Building Group, LLC  
 William and Margaret Sweet  
 Gregory and Persephone Szydlo

T

Michael and Denise Tager  
 Norman Taillon  
 Stacey and Trevor Tank  
 Deidre and Frank Tavera  
 John E. Tavera Memorial Fund  
 John and Ann Taylor  
 TD Bank  
 The Hospital of Central Connecticut  
 Thomaston Savings Bank  
 Barry Thompson and Therese Pac  
 Thrivent Financial - Thrivent Choice  
 Ruth Timme  
 Tollman Spring Co., Inc.  
 Patty Tomascak  
 Gerald and Marsha Tomlinson  
 Natalie Torres  
 Torrington Savings Bank  
 Ann Tracy  
 William and Kim Tracy  
 Travelers  
 Byron and Debra Treado  
 Triangle Church of Christ  
 TRUIST  
 Mark and Catherine Tuccillo  
 Alvin and Donna Tuck  
 Michael and Amy Tuck  
 Russell and Marianne Tuverson

U

U.S. Trust Bank of America  
 Private Wealth Management  
 Michael Uchali  
 The Ultimate Companies, Inc.  
 Dwayne Unger  
 United Way of Massachusetts Bay and Merrimack Valley  
 United Way of the Bay Area  
 United Way of West Central Connecticut

V

Peter and Carmelita Valerio  
 Karrine Vanasse  
 Steven and Joanna Vastola  
 Patricia and William Veits  
 Jacqueline Vigue  
 Lindsay Vigue Photography  
 Joyce and James Voisine

W

Rachel and William Wache  
 Wadsworth Atheneum  
 Museum of Art  
 Bruce Wallen  
 Walmart Store #2719

Walmart Store #2897  
 John Walsh  
 Timothy and Mary Walsh  
 The Walt Disney Company Foundation  
 Timothy Wang  
 Lawrence and Barbara Wanzer  
 Arthur and Patricia Ward  
 Darlene Warner  
 Jonathan Warner  
 Warner Theatre  
 Christine Wartonic  
 Lori Wartonic  
 Stephen and Karen Wasley  
 Diane and Joseph Wasta  
 Laura and Christopher Watson  
 Webster Bank  
 Thomas and Cheryl Wegner  
 Laure and Bradford Welch  
 Sharon and John Werner  
 Julia Weston  
 Carolyn Wetzel  
 Joan and Michael Wexelbaum  
 Bruce Wheeler  
 Wheeler Clinic  
 Hilary and Josh Whitcomb  
 John and Deborah Whitcomb  
 Marian Whitcomb  
 Marcia White  
 Christina Williams

Robert and Janet Williamson  
 Dudley and Sally Willis  
 Wiltse Brothers Garage  
 Bridget and Troy Wiseman  
 Eleanor Woike  
 Ella Woike  
 Wolverine Coil Spring  
 Women's Turf Inc.  
 Maureen and Brian Wood  
 Nancy Woodling  
 Gene and Jeanne Woolverton  
 Samantha Wrenn  
 Christopher Wright  
 Joel Wulff

Y

Craig and Barbara Yarde  
 Yarde Metals, Inc.  
 Sally Young  
 Your Cause, LLC

Z

Denise and Douglas Zabawa  
 Mark and Lorna Zammett  
 Carole and Joseph Zembko  
 Victoria Ziotas  
 Ellen Zoppo-Sassu and Pete Sassu

First grade students from Plainville had the opportunity to complete the *First Wave* program at the Wheeler Regional Family YMCA for free thanks to a \$3,000 grant from the Bristol Brass General Grant Fund and the Turkus Family Fund. The six-week program encompasses water adventures, teaching dozens of first graders water safety, basic swim lesson skills and character building topics. Wheeler Regional Family YMCA Aquatics Staff first meet with teachers and students before sessions begin for a fun and informative assembly on water safety.





The M.A.T.H. (Music, Art, Technology and History) Carousel tour program brings second grade students into the New England Carousel Museum. Each child experiences a dynamic, hands-on learning program about the music, art, technology, and history of the carousel that supports their classroom curriculum. First piloted in 2017 for Bristol students with a grant from Main Street Community Foundation, a \$5,000 grant in 2018 from the Bristol Savings Bank Fund, the Sid Bernard & Ed Miller Children's Fund for the Visual Arts and the Fuller and Myrtle Barnes Fund for Education expanded this program so additional Bristol students could experience the magic of the New England Carousel Museum.

**GIFTS WERE MADE IN HONOR OF:**

Mindy Anastasio  
 Jeanine and Michael Audette  
 Tom and Melanie Barnes  
 Wallace Barnes  
 Jarre Betts  
 LeaAnn Blanchard  
 Bristol Preschool Child Care Center  
 Bristol School Readiness Council  
 Gerry Burns  
 David Casey's 60th Birthday  
 Ronnie Cassin  
 Judy Caturano  
 Dolly Chamberlin's 90th Birthday  
 Brooklyn Cherry  
 The Ciccarelli-Vitale Family  
 Sondra and Tony Clement's 60th Wedding Anniversary  
 Leslie and Willy Cote  
 Larry Covino  
 Early Childhood Teachers  
 Early Learning - A PET Project Fund at Main Street Community Foundation  
 Chris Eaton  
 Rose Esposito  
 Anne Gobes  
 Lauren and Nathan Godin  
 Olga Gomelskaya  
 Greene-Hills School Family Resource Center  
 Hon. Barbara Hackman Franklin  
 Gwen and Robert Hansen  
 Har-Bur Middle School 7th Grade Sapphire Team  
 Jenna L.S. Hasskral  
 Kaitlin Humble  
 Ryan and Kaitlin Humble  
 Imagine Nation, A Museum  
 Early Learning Center Staff  
 Jacqui and Aaron Kemp's Marriage

Jen King  
 Nathan, Christopher and John King  
 Leading Ladies  
 Lake Garda School Staff  
 Elisa Latreille  
 Mr. and Mrs. Ryan Latreille's Anniversary  
 John Letizia  
 Marilyn Lobaczewski's Birthday  
 Judie Lodovico  
 Sally Lord  
 Great Grandma Marcoux  
 Laura Minor and her Contribution to the WOW Event  
 Tom and Karen Nestico  
 The Orchards at Southington  
 Donna Osuch  
 Ovarian Cancer Survivors  
 Ann Palmisano  
 Lynn Petrucelli  
 Annette Petrucelli's Birthday  
 Ceil Petrucelli's Birthday  
 Mary Alice Petrucelli-Timek  
 Alyssa and Haley Pilkington  
 Alice Radcliff  
 Jeanne Radcliff  
 Samantha Rajotte  
 Linda Rich  
 Garrett Robinson  
 Jim and Kathleen Sayre  
 Thomas Shackett's 75th Birthday  
 Rodger and Sharon Stotz  
 Jim Wartonick  
 West Bristol School  
 Marian Whitcomb  
 The Williams Children who Attended Bristol Preschool Child Care Center  
 Jill Wilson  
 Bruce Zeh and Lisa Johnson  
 Ellen Zoppo Sassu's 50th Birthday

**GIFTS WERE MADE IN MEMORY OF:**

Louise Adams  
 Paul Adams  
 Jay Sanford Albert  
 Leonard Alderman  
 Al Barnes  
 Sid Bernard  
 Stan Bitel  
 Mary Bolan  
 Donna Borysewicz  
 Betty Boukus  
 Bryan Bowerman  
 Blanche Brault  
 Maria Brodowicz  
 Eva Brodowicz Wickwire  
 Sandy Caggiano  
 Chloe  
 John Cignoni  
 Dante Cistulli  
 Dante Cistulli Sr.  
 Stacey Clingan  
 Roxanne Croce  
 Nancy Culver  
 Jack Denehy  
 Gloria DiFrancesco  
 The DiFrancescos  
 Katie Dobroczyński  
 Jeffrey Downes  
 Karen DuCotey  
 Raymond Duval  
 Patti Ewen  
 Bryan John Fowler  
 William Gardner  
 Andrew Giacomini  
 Murielle Giacomini  
 Jay Giordano  
 Robert Gundersen  
 Don Guzauckas  
 Nabih Hamzy  
 Neal Huber  
 Matthew Huff  
 Angelo Ingellis  
 Nancy Ingellis  
 Virginia Ingellis  
 Paul Jaspersohn  
 Carolyn Jodoin

Carolyn Kochanski  
 Doris Lazorik  
 John J. Lazorik  
 Patricia LeConche  
 Palma Lobaczewski  
 Walter Lobaczewski  
 Genevieve Luboyeski  
 Therese MacCallum  
 Nicholas P. Maglio  
 Patricia Malvezzi  
 Stella Martin  
 Carol McDonald  
 Rob McDonald  
 Charlie McGowan  
 Lawrence Mezzapelle  
 Vicki Michanczyk  
 Clemence Miecznikowski  
 Audrey Mink  
 Dave Mongillo  
 Ann Irene Nevin Ph.D.  
 A.J. Nocera  
 David Nocera Jr.  
 Tony Norton  
 Janet O'Brien Rajotte  
 Leenora Oliver  
 Nihat Ozkaya  
 Arline Papa  
 Hayley Petit  
 Jennifer Petit  
 Michaela Petit  
 John Petrucelli  
 Patricia Petrucelli  
 Dorothy Picard  
 Geoff Pierce  
 Betty Radcliff  
 Don Radcliff  
 George Rich  
 Helen Rich  
 Julie Roche  
 Douglas Roland  
 Mary (Mae) Rossvall  
 Jill Shackett  
 Maryellen Shafer  
 Myron Shafer  
 Harold Simon  
 Michael Simon  
 Taylor Smith

Mark Sylvain  
 Betty Timek  
 Peggy Ann Walsh  
 Kristen Warner  
 William Wartonick  
 Paige Wartonick Laferriere  
 Duke Watson  
 Audrey Weaver  
 Abbie Werner Patria  
 John Whitcomb  
 Jane Woodard

**GIFTS IN KIND:**

Garrett Printing & Graphics Inc.  
 Jim Lausier  
 Pat Laviero  
 Harry Lew  
 Tom Mazzarella  
 Dawn Nielsen  
 Paladin Commercial Printers, LLC  
 Jeanne Radcliff  
 Ron Sadecki  
 Thomaston Savings Bank  
 Tunxis Community College/  
 Tunxis@Bristol  
 Maryann Videtto  
 Webster Bank

**MATCHING GIFTS:**

Allied World  
 Barnes Group Foundation, Inc.  
 Benevity Community Impact Fund, a fund of American Endowment Foundation  
 Charities Aid Foundation of America  
 Cigna Foundation  
 Cyient, Inc.  
 Home Depot Charity Program Trust  
 The Merck Foundation  
 The Stocker Foundation  
 The Walt Disney Company Foundation  
 Travelers  
 Your Cause, LLC



STEWARDSHIP OF ASSETS



# 2018 Governance

Main Street Community Foundation welcomes volunteers from our local communities to serve as committee members. If you are interested in this opportunity, please contact us.

## 2018 OFFICERS AND DIRECTORS

John D. Scarritt,  
*Chairman of the Board*  
Michael J. Brault,  
*Vice-Chairman*  
Valerie A. DePaolo,  
*Secretary*  
Marguerite P. Fletcher,  
*Treasurer*  
John A. Letizia,  
*Past Board Chairman*  
Susan D. Sadecki,  
*President & CEO*  
David J. Aldieri  
Todd Burton  
Daniel J. Daigle  
Kristine J. Dargenio  
Val E. Dumais  
Scott Fournier  
Mary Ellen Hobson  
Kimberly H. James  
Kelly A. Leppard  
Mark D. Malley  
Jacqueline Merchant  
William R. Micari  
Kathryn C. Reinhard  
Jennifer J. Scully  
Byron J. Treado III

## FOUNDERS

Sherwood Anderson  
Carlyle F. Barnes  
Thomas O. Barnes  
Delores Capers  
Ann Clark  
Terry B. Fletcher  
Edward P. Lorenson  
Robert S. Merriman  
David J. Preleski  
Jeanne E. Radcliff  
John E. Smith  
Christopher Ziogas

## ASSET DEVELOPMENT COMMITTEE

Kimberly James, *Chair*  
Donna Ayer  
Jacqueline Merchant  
Paul Rochford  
Mary "Gerry" Shopis  
Byron Treado  
Michael Zych  
John D. Scarritt, *ex officio*  
Susan D. Sadecki, *ex officio*

## AUDIT COMMITTEE

Daniel J. Daigle, *Chair*  
Lisa Attle  
Michael J. Brault  
Dennis Cleary  
Val Dumais  
Anthony Mattioli  
Janis L. Neri  
Barry Thompson  
John D. Scarritt, *ex officio*  
Susan D. Sadecki, *ex officio*

## BOARD DEVELOPMENT COMMITTEE

John A. Letizia, *Chair*  
Thomas O. Barnes  
Michael J. Brault  
Todd Burton  
Valerie A. DePaolo  
Kelly Leppard  
Jacqueline Merchant  
John E. Smith  
John D. Scarritt, *ex officio*  
Susan D. Sadecki, *ex officio*

## BY LAWS COMMITTEE

Valerie A. DePaolo, *Chair*  
John A. Letizia  
Jacqueline Merchant  
John D. Scarritt, *ex officio*  
Susan D. Sadecki, *ex officio*

## DISTRIBUTION COMMITTEE

Todd Burton, *Chair*  
Jennifer Scully, *Vice-Chair*  
Halley Allaire  
Lisa Attle  
Michael Brault  
Sue Brennan  
Rich Corcoran  
Kristine J. Dargenio  
Marguerite P. Fletcher  
Scott Fournier  
Anita Hamzy  
Elizabeth Hill  
Kimberly James  
Kelly Leppard  
Kimberly Lewis  
Cheryl Moran  
Susan Moreau  
Jennifer O'Connor  
Mark Peterson  
Jeanne E. Radcliff  
Jerald Rafaniello  
Kathryn C. Reinhard  
Anthony Russo  
Cyndi Simms  
Barry Thompson  
Caitlin Tracy  
Byron Treado  
Jarre B. Betts, *ex officio*  
John D. Scarritt, *ex officio*  
Susan D. Sadecki, *ex officio*

## FINANCE COMMITTEE

David Aldieri, *Chair*  
Thomas O. Barnes  
Mark Blum  
Marguerite P. Fletcher  
Jackie Furniss  
John Letizia  
Mark Malley  
William R. Micari  
John D. Scarritt, *ex officio*  
Susan D. Sadecki, *ex officio*

## INVESTMENT COMMITTEE

William R. Micari, *Chair*  
David J. Aldieri, *Vice-Chair*  
Robert M. Caiaze  
Bruce Daigle  
Ginny Fitzgerald  
David Kushlan  
Jennifer Scully  
Burton Sonenstein  
Julia Weston  
John D. Scarritt, *ex officio*  
Susan D. Sadecki, *ex officio*

## PERSONNEL COMMITTEE

Scott Fournier, *Chair*  
Marguerite P. Fletcher  
Mary Ellen Hobson  
Jacqueline Merchant  
John D. Scarritt, *ex officio*  
Susan D. Sadecki, *ex officio*

## SCHOLARSHIP COMMITTEE

Scott Fournier, *Chair*  
Kathryn C. Reinhard, *Vice-Chair*  
Sherwood Anderson  
Dawn Angelillo  
Emily Barnes  
Nancy Blum  
Marie Bowes  
Dawn Burke  
Cathy Cassin  
Rob Cook  
Elaine Couture  
Patricia B. Dunn  
Marge Fletcher  
Valerie Furey  
Mary Kay Greger  
David Griszkauskas  
Mary Ellen Hobson  
Hal Kilby  
Paula Knight  
Sandy Knight  
Susan Kozikowski

Nancy Micloskey  
Lea Mola  
Marilyn Perzan  
Rachel Sattler  
Diane Schutz  
Mary "Gerry" Shopis  
Michael Suchopar  
Karen Varasconi  
Christina Welch  
Jarre B. Betts, *ex officio*  
John D. Scarritt, *ex officio*  
Susan D. Sadecki, *ex officio*

## STEWARDSHIP COMMITTEE

Marguerite P. Fletcher, *Co-Chair*  
Janis L. Neri, *Co-Chair*  
Jacqueline Merchant  
Kathryn C. Reinhard

## STAFF

Susan D. Sadecki,  
*President & CEO*  
Kate M. Kerchaert,  
*Director of Grants & Programs*  
Julie Matthews,  
*Administrative Assistant*  
Rhonda Pilkington,  
*Accountant*  
Samantha R. Rajotte,  
*Scholarship & Program Officer*  
Mindy Wallen,  
*Program Associate*



Main Street Community Foundation Board of Directors



Main Street Community Foundation Staff

# Financial Statements

## CONSOLIDATED STATEMENT OF FINANCIAL POSITION

ASSETS	December 31, 2018	December 31, 2017
Cash and Equivalents	\$859,733	\$813,728
Investments	39,975,716	42,886,034
Cash Held in Collateral Account	-	100,486
Pledges Receivable, net	5,250	1,000
Prepaid Expenses	5,725	5,273
Furniture and Equipment, net of depreciation	12,126	10,952
<b>Total Assets</b>	<b>\$40,858,550</b>	<b>\$43,817,473</b>
<b>LIABILITIES AND NET ASSETS</b>		
Grants Payable	\$33,560	\$32,267
Accrued Expenses	10,631	8,284
Agency Endowments & Other Component Funds	6,207,468	6,694,649
Total Liabilities	\$6,251,659	\$6,735,200
Net Assets	\$34,606,891	\$37,082,273
<b>Total Liabilities and Net Assets</b>	<b>\$40,858,550</b>	<b>\$43,817,473</b>

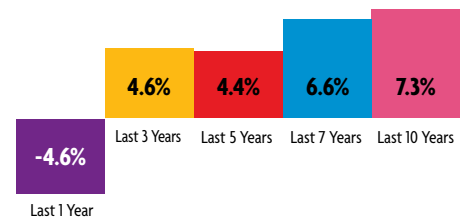
## CONSOLIDATED STATEMENT OF ACTIVITIES

SUPPORT AND REVENUES	December 31, 2018	December 31, 2017
Fund Contributions	\$1,354,504	\$2,170,052
Less: Contributions to Agency/Component Funds	(59,434)	(35,208)
Interest and Dividend Income*	1,013,063	929,541
Other Income*	153,979	160,354
Investment Gains/(Losses)*	(2,774,121)	3,442,807
<b>Total Support and Revenues</b>	<b>\$(312,009)</b>	<b>\$6,667,546</b>
<b>GRANTS AND EXPENSES</b>		
Grants*	\$1,298,696	\$1,283,508
Scholarships	207,105	180,695
Operating Expenses	657,572	634,967
<b>Total Grants and Expenses</b>	<b>\$2,163,373</b>	<b>\$2,099,170</b>
Change in Net Assets	\$(2,475,382)	\$4,568,376
Net Assets at Beginning of Year	\$37,082,273	\$32,513,897
<b>Total Net Assets at End of Year</b>	<b>\$34,606,891</b>	<b>\$37,082,273</b>

\*Net of Agency & Component Fund Activity

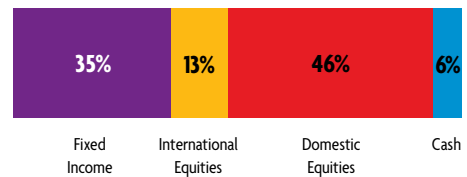
## HISTORICAL INVESTMENT PERFORMANCE

Returns as of December 31, 2018, reported net of investment management fees:

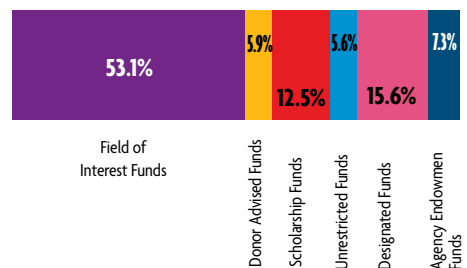


## HOW YOUR COMMUNITY'S ENDOWMENT IS INVESTED

Asset Allocation as of December 31, 2018:



## 2018 PERCENTAGE OF TOTAL ASSETS BY FUND TYPE



120 Halcyon Drive  
P.O. Box 2702  
Bristol, CT 06011-2702

## 2018 ANNUAL REPORT

# Creating Opportunities for Good

### Main Street Community Foundation

120 Halcyon Drive  
P.O. Box 2702  
Bristol, CT 06011-2702

Phone: 860.583.6363  
Fax: 860.589.1252  
[www.mainstreetfoundation.org](http://www.mainstreetfoundation.org)

 [facebook.com/MainStreetCommunityFoundation/](https://facebook.com/MainStreetCommunityFoundation/)



Confirmed in Compliance with National Standards for  
U.S. Community Foundations.

Excellence. Accountability. Impact.™

