



# e volve

Everything on this earth is in a continuous state of evolving, refining, improving, adapting, enhancing... changing.

*Dr. Steven Maraboli*



## HIGHLIGHTS OF 2017

**\$43.9** million in total assets

**\$2.3** million in  
contributions received

**\$1.7** million awarded in  
grants and scholarships to  
our community

**225** funds established  
since 1995

**200+** volunteers supporting  
the Main Street Community  
Foundation

## TABLE OF CONTENTS

A Message to Our Neighbors 3

### GIFT PLANNING

Funds Established in 2017 4  
Becoming a Donor/Establishing a Fund 7  
Leaving a Legacy 8  
Legacy: Passing on What Matters 9

### EFFECTIVE GRANTMAKING

2017 Grant Distributions 10  
2017 Scholarships and Awards 16

### COMMUNITY LEADERSHIP

FRC Able to Continue Services 19  
MSCF Receives National Recognition 19  
Walsh Summer Work Experience Program 20  
Students with Autism Benefit from Pilot Program 20

### STEWARDSHIP OF ASSETS

Donor Advised Funds 22  
Agency Endowments 22  
Designated and Project Funds 23  
Field of Interest Funds 24  
Scholarship Funds 25  
Unrestricted Community Funds 26  
Sustainability Funds 26  
Burlington Community Fund 27  
Make a Mark Region 10 Enrichment Fund 27  
Plainville Community Fund 28  
Men & Boys' Fund 28  
Barnes Memorial Trust 29  
Women & Girls' Fund 30  
Friends of the Foundation 31  
Gifts Received in 2017 32  
2017 Officers, Directors & Committees 38  
Financial Statements 39

## MISSION, VISION, CORE VALUES

### OUR VISION

To be widely recognized as the comprehensive center for leadership and philanthropy in the communities of Bristol, Burlington, Plainville, Plymouth, Southington and Wolcott.

### OUR MISSION

To enhance the quality of life for both present and future generations in the communities we serve. We accomplish our mission by encouraging and promoting:

- Gift Planning
- Prudent Stewardship of Assets
- Effective Grantmaking
- Community Leadership

### OUR CORE VALUES

Excellence, Integrity, Inclusiveness and Transparency in all we do.

Don't just exist. Live. Get out,  
explore. Thrive. Challenge yourself.  
**Evolve.** Change forever.  
*Anonymous*

## MESSAGE TO OUR NEIGHBORS

**The Main Street Community Foundation** exists to meet the changing needs of the communities of Bristol, Burlington, Plainville, Plymouth, Southington and Wolcott, Connecticut. Our mission is to help individuals, families and businesses fulfill their charitable goals and create lasting impact so your communities can improve and adapt as they **evolve** and change.

We are the most comprehensive philanthropic organization serving the residents and friends of your communities. We identify unmet needs, engage with local nonprofits and residents, build collaborations, and launch initiatives. It is our responsibility to match resources with needs and mobilize the assets entrusted to us. Stewarding nearly **\$44 million** in assets as of 12/31/17, composed of over **225 funds**, the Foundation has awarded **\$15.5 million** in grants and scholarships since its establishment in 1995.

Our continuous adherence to sound financial, governance and donor engagement practices led to our successful re-accreditation with the National Standards for U.S. Community Foundations. We are proud to report we received an unqualified audit opinion of our 2017 financials from the accounting firm King, King, & Associates, PC and our investment strategy led to a healthy 13.7% net return.

We continue to be committed to a strategic plan approved by our board of directors in 2017 that sets forth **three important priorities**: 1) Building Recognition/Visibility, 2) Engaging the Next Generation, and 3) Growing the Endowment to Fuel Investments in Your Local Community. Dependent on volunteer leadership to carry out our mission, those who serve on our board of directors and committees expand our community philanthropic efforts by sharing their individual and collective knowledge and expertise. In early 2018, we bid farewell to highly respected board member Pattie Dunn as we welcomed Kelly Leppard. To each and all, we are very grateful for their generous donation of time, talent and community insight.

As we continue to evolve and raise the quality of life in your communities we are forever grateful to the many caring individuals, families, businesses and organizations that have created a community foundation that is relevant. This annual report is our opportunity to share with you the stories of our donors and their gifts to your communities. It is also an opportunity to recognize the collective philanthropy of all and to invite you to join us so that we can continue to build a permanent resource of assets for your local community that will have impact – **forever**.



John D. Scarritt  
*Chairman of the Board*

Susan D. Sadecki  
*President & CEO*



Optimism is the most important human trait, because it allows us to **evolve** our ideas, to improve our situation, and to hope for a better tomorrow.

*Seth Godin*

# Gift planning

Since our founding in 1995, endowed gifts and bequests have been the cornerstone of charitable contributions to the Main Street Community Foundation. Each of the following funds established in 2017 reflect a donor's interest or philanthropic objective to leave a legacy and make a difference in one or more of the communities we serve – Bristol, Burlington, Plainville, Plymouth, Southington and Wolcott.



## FUNDS ESTABLISHED IN 2017



Jarre and Whit Betts

### BETTS FAMILY FUND

Bristol residents Jarre and Whit Betts have long supported the Greater Bristol community through their own volunteer and philanthropic efforts. Establishing this donor advised fund will extend their support to a variety of charitable organizations primarily in the communities served by the Main Street Community Foundation.



### CORLISS FUND FOR THE BRISTOL FAMILY RESOURCE CENTERS

This designated fund was established to honor Carol Corliss and all the families she served during her 17 years as a Lead Parent Educator for Bristol Family Resource Centers (FRCs). FRC services are available to parents beginning at the birth of their child through eighth grade with the mission to create strong school-family-community partnerships to ensure children thrive. Families come from all income levels including many families living at or below the poverty level. The motto is "All Families...All Kids" because no one is turned away in need of help and support. FRC services include parenting education, developmental screenings, home visiting, positive youth development activities, literacy programs, resources and referrals, along with assistance for basic needs. The fund will provide an annual grant to the Bristol Family Resource Center to support ongoing services.



### HAITI MEDICAL FUND

Dr. Dan Scoppetta, a longtime surgeon in Bristol, developed a relationship with the Grand Anse Women's Special Health Program in 2016, on his way home from one of his regular volunteer surgical missions to Haiti. To Dan's surprise, the program was run by a nurse who grew up on a farm, in Bristol, where ESPN is now located. When he toured the local hospital, he was amazed when he found out that the hospital that served 500,000 residents did not have a single surgeon and that the hospital operating room was remarkably functional. The Grande Anse Surgery Project is a group of health professionals who think holistically and passionately about society's obligation to provide quality surgical care to the residents of Jeremie, Haiti. This fund will serve as a collection mechanism for donations and grant funds to support expenses for medically and technically trained volunteers participating in humanitarian efforts in Haiti.



### MEN & BOYS' IMMEDIATE RESPONSE FUND

This fund was established to offer immediate assistance to men and boys in Bristol, Burlington, Plainville, Plymouth, Southington and Wolcott. Grants are awarded to assist individuals who may be in need due to a particular life situation or unexpected financial hardship. Preference is given to needs for economic security, increased self-sufficiency, health and safety, workforce readiness and opportunities for inclusion. Referrals are made by social service providers.



Geoffrey Pierce

### GEOFFREY M. PIERCE MEMORIAL FUND

This donor advised fund was established by family and friends to honor the life of Geoff Pierce who passed away of a drug overdose in 2016 at the young age of 26. Geoff was a lifelong Bristol resident who loved sports and was always there when friends needed a listening ear. The fund will support organizations for general charitable purposes with preference for programs that promote addiction recovery.

## FUNDS ESTABLISHED IN 2017



Raymond Lassy

### RAY MACHINE CORP./RAY & DARLENE LASSY FAMILY FUND

Ray Lassy, a longtime resident of Plymouth, established this scholarship fund after working for over 50 years in a field he loved. Ray started a small tool and die business in the basement of his parents' house while working at a machining manufacturer. He eventually opened his own shop in Terryville before expanding the business to Ray Machine Corporation, also located in Terryville. Ray held several patents for parts he designed and tooled and was passionate about the work he did. This scholarship is available to residents of Plymouth or Terryville who are graduating high school seniors of Terryville High School and are pursuing post-secondary education and/or training in the field of precision machining, mechanical engineering, or manufacturing and design.



Laura Minor

### LAURA SCHLESINGER MINOR FUND

Laura Minor and her husband, Craig, moved to Bristol in 1984 because they were looking for a community that would not only be a good place to raise a family but where they felt that they could make a difference. Throughout the years, rather than receiving gifts, Laura has asked

friends and family to consider making a donation to the Women & Girls' Fund. The Laura Schlesinger Minor Fund will ensure the work of the Women & Girls' Fund at Main Street Community Foundation continues past her lifetime. Laura, a participant in the Women & Girls' Fund's early focus groups, had already included a bequest in her estate plan to establish the fund. However, in 2017, she decided to create the fund during her lifetime so she would be able to see the benefits.



Dora Schubert

### DORA SCHUBERT SCHOLARSHIP FUND

This scholarship fund was established in 1961 through a bequest from Dora Schubert and was transferred to Main Street Community Foundation in 2017. Dora's desire was to establish a named scholarship to defray the expenses of education for deserving students. She was a longtime Plymouth resident and member of St. Paul Evangelical Lutheran Church of Terryville. A scholarship will be awarded annually to a graduating senior of Terryville High School with a preference to children of members of the St. Paul Evangelical Lutheran Church of Terryville.



Pat and Bob Wollenberg

### PAT & BOB WOLLENBERG CHARITABLE FUND

This advised fund, at the recommendation of the Wollenberg family, will be used to

support a variety of charitable organizations within their local community and throughout Connecticut. For more on the Wollenbergs and the impact of their gift, see page 35 of this annual report.



Jane Woodard

### JANE WOODARD CHARITABLE FUND

This donor advised fund was established by an anonymous donor to honor the memory of Wolcott resident Jane Woodard. Jane was the daughter of Swedish immigrants, wife of a WWII Army Veteran and a woman ahead of her time. As a delegate to the CT Constitutional Convention in 1965, she helped rewrite that Constitution. She was Treasurer of the Town of Wolcott, Vice Chairwoman and honorary member of the Republican Town Committee and the Republican State Central Committee. She served as executive secretary to Mayor Ed Bagley, served as Deputy Registrar of Voters, President of the Women's Club and member of the 175th Anniversary Committee among many other volunteer activities all while raising her family in Wolcott. Grants will be made to charitable organizations for general charitable purposes primarily in the Foundation's service area at the recommendation of the donor.

## BECOMING A DONOR/ESTABLISHING A FUND

There are many ways to donate to Main Street Community Foundation to support worthwhile charitable organizations and causes in our service area of Bristol, Burlington, Plainville, Plymouth, Southington and Wolcott, Connecticut. The Foundation offers a range of personalized services to help donors fulfill their charitable goals. As partners in philanthropy, we work with each donor to establish a fund or gift plan without complex administrative burdens.

### GIVE TO AN EXISTING FUND

You can support the Foundation's ongoing work with an unrestricted gift of any amount. Contributions can also be made to any of the Foundation's permanent endowment funds which benefit a diverse range of charitable purposes.

also leave charitable assets upon your passing in the form of a bequest in will or trust, retirement plan designations or beneficiary designation in a life insurance policy. A fund can be established as a permanent endowment or as a temporary fund in which income and principal will be distributed.

Your benefits include:

- Choice of fund type and fund name
- Grant making support and counsel
- Administration of gifts and grants
- Maximum tax advantages allowed by law
- Prudent investment management
- Permanent recognition or anonymity at donor's discretion

### ESTABLISHING A NEW FUND

Our donors are individuals, families, companies and charitable organizations. You can establish a fund using a variety of gift giving vehicles, including: cash, stock, retirement assets, other tangible personal property, bequests and other planned gifts. Most new endowment funds can be established with a minimum donation of \$10,000; to establish a new scholarship fund, the minimum is \$25,000. This gift can be given as a lump sum or over a period of time during your life. You may

### DONOR SERVICES

The Main Street Community Foundation provides permanent, professional administration of charitable funds without the expense or effort of establishing a private foundation. All assets are professionally managed with oversight by the Investment Committee and Board of Directors. There is no cost to establish a fund. There is a modest management fee which supports the administrative operations of the Foundation.

### ADDITIONAL SERVICES

The Foundation can assist private foundations or other grant making institutions in a variety of ways that include:

- Administration of grant making programs
- Project review for funding consideration
- Advisement on community needs and priorities
- Assistance to private foundations to meet pay-out requirements

## OUR FLEXIBLE FUND OPTIONS INCLUDE:

### UNRESTRICTED COMMUNITY FUNDS

Flexible and responsive to emerging and changing community needs. You place no restrictions on your gifts and leave decisions about charitable use of the funds to the Foundation.

### FIELD OF INTEREST FUNDS

You have the opportunity to support a broad category of need such as the arts, healthcare, education, environment or a specific geographic area. Grant recipients are selected by the Foundation's Distribution Committee.

### DONOR ADVISED FUNDS

You participate actively in grantmaking by suggesting charitable organizations to receive grants. Foundation staff assists you by researching grant requests and connecting you with potential grant recipients.

### DESIGNATED FUNDS

You designate support for a specific charitable organization. If the named charity ceases to exist, another organization with a similar purpose is selected by the Foundation's Board of Directors to ensure your purpose for giving will be honored in perpetuity.

### AGENCY ENDOWMENT FUNDS

Established by a nonprofit organization as a means of protecting their charitable dollars for the future and to ensure an annual source of support for their programs and operations.

### SCHOLARSHIP FUNDS

You can establish a named fund for any level of education. You may designate a particular school, field of study and select eligibility criteria.

### SUSTAINABILITY FUNDS

You make permanent gifts that strengthen the Foundation's role as a funder, a community leader, convener and advocate.



## LEAVING A LEGACY THROUGH BEQUESTS AND PLANNED GIVING



**Without a solid foundation, you'll have trouble creating anything of value.**

*Erika Oppenheimer*

The Main Street Community Foundation is built on the dreams and desires of people who are part of the Foundation's service area. For some people, the desire to create a legacy comes during their life as a current gift. For others, these legacies are shaped by the donor as future bequests or planned gifts. And still at other times, a celebratory or tragic event, such as a retirement or sudden death, will be the impetus for honor or memorial gifts that may be used as the beginning of an endowed fund in a loved one's name. Large or small, all of these gifts will enhance the quality of life in your community for generations to come.

If you have included the Main Street Community Foundation in your estate plan and would like to be included in the Main Street CornerStone Society, please contact the Foundation office at 860.583.6363.

A cornerstone provides a strong support to a structure for its future stability. Laying this groundwork for the future is critical. Like this permanent support, CornerStone Society members lay the groundwork for the organizations and causes they care about most, and the future stability of the Foundation.

The opportunity to give later is simple. You can leave a bequest to the Main Street Community Foundation for the causes you care about in a will or trust, through a retirement plan designation, life insurance beneficiary designation, remainder interest in real estate, or other planned giving vehicles.

### CORNERSTONE SOCIETY MEMBERS

We are pleased to recognize the following very generous individuals who have made or have communicated their plans to leave a gift to the Foundation in their will, estate plan or some other deferred gift.

Anonymous 1  
Anonymous 2  
Anonymous 3  
Anonymous 4  
Anonymous 5  
Anonymous 6  
Robert J. Alim  
Carlyle\* & Elizabeth Barnes  
Tom & Melanie Barnes  
Sidney M. Bernard\* &  
Edward J. Miller  
Whit & Jarre Betts  
Robert C. Boudreau  
Bryan Bowerman  
Marjorie E. Budge

Ken Burns  
Robert & Rebecca Caiaze  
Father Salvatore Cavagnuolo  
Dr. Ann Clark  
Raymond\* & Lorraine Corsini  
Roland & Shirley\* Dumont  
Terry & Marguerite Fletcher  
Mark & Michelle Gibson  
David Greenleaf  
Bill & Anita Hamzy  
R. Stanley\* & Marjorie R. Harrison  
Hal Kilby  
David Kushlan  
Laura Schlesinger Minor  
Janis Neri

Robert & Ella Mae Packard  
Richard E. & Margaret W.  
Palarczyk  
Lynne M. Peters  
David & Kathy Preleski  
Kevin Prior  
Jeanne Radcliff  
Daniel\* & Patricia Saccu  
Noreen Schumann  
John E. Smith  
Bill & Kim Tracy  
Karen Ann Varasconi  
Dr. Joan T. Wallace

#### **Bequests Fulfilled:**

Irene Brzezinski  
Mark M. Keating  
Richard Lass  
Elizabeth I. Matt  
Robert & Carmen Merriman  
Al & Joan Monico  
Eva M. Pierce  
Peter S. Saman  
Glo Sessions  
Elizabeth M. Tyrrell

*\*deceased*



## LEGACY: PASSING ON WHAT MATTERS



Noreen Schumann

At certain points in our lives, many of us pause to reflect on the people, relationships, places, values, and experiences that have shaped our growth as individuals. Our motivation to leave a legacy is often ignited by those thoughtful reflections. The **CornerStone Society** recognizes those who have left a bequest to the Foundation in their will.

In her book, "**Legacy: Passing on What Matters**", CornerStone Society member **Noreen Schumann** shares her personal experience with purposeful, intentional planning and the valuable assistance a community foundation can provide in the process. She discusses the importance of leveraging the limited funds available within a community to respond effectively to unlimited needs and the various ways that community members can pool financial resources in their charitable giving goals and efforts. Noreen states, "Community foundations should not be overlooked. I believe they are in a unique position to broker the assets in a community with bona fide needs and a stamp of approval for the organization requesting funds. The community foundation has first-hand knowledge of the key players in the community. It knows their donors and their funding interests."

"I love this insightful and interesting perspective on the importance of giving to others. The way Noreen explores the opportunities to contribute to achieve maximum contribution is inspiring," said Susan Sadecki, President & CEO of Main Street Community Foundation. "I recommend this book as a terrific resource for families and others who are faced with the

challenges and opportunities of transferring charitable wealth."

The Douglas and Noreen Schumann Special Interest Fund was established at Main Street Community Foundation in 1998 to support community programs focused on building self-esteem, confidence and strong values in youth. In addition to her generous charitable giving, Noreen has provided service to the Foundation by serving on the Board of Directors and several committees. Noreen shared her time, philanthropic expertise, and personal experiences during a community presentation, *Your Legacy – By Design or By Default?*, hosted by Main Street Community Foundation in 2017 and sponsored by Merrill Lynch Wealth Management.

**"I feel so privileged to have been introduced to Main Street Community Foundation," Noreen stated. "Community Foundations know the assets and needs of the community and they are instrumental in bringing those two things together."**

Main Street Community Foundation can help. We have the resources for gift planning. Together with a donor and/or their professional advisors, we can create a charitable giving plan to accomplish their individual goals.

Interested donors can request a copy of Noreen's book by contacting Main Street Community Foundation.



The whole point of being alive is to **evolve** into the complete person you were intended to be.

*Oprah Winfrey*

# effective grantmaking

The Main Street Community Foundation welcomes grant applications from any organization serving the Connecticut communities of Bristol, Burlington, Plainville, Plymouth, Southington, and Wolcott. An organization must be recognized as a tax-exempt public charity under section 501(c)(3) of the Internal Revenue Code. Grants are made in the fields of Arts & Culture, Community Development & Outreach, Education, Health, Human Services, Environment, Animal Welfare and Youth Development. Application guidelines are available for each grant program at [www.mainstreetfoundation.org](http://www.mainstreetfoundation.org). Interested organizations should first contact the Foundation office at 860.583.6363 to discuss proposal ideas and the application process.

The distribution process for grants from Money in Motion, Immediate Response and Donor Advised funds continues throughout the year as requests or special initiatives are presented to the Foundation. Scholarships are available to individuals pursuing educational and career opportunities in a variety of areas and at varying levels of education and training.

## 2017 GRANTS AWARDED

In 2017, Main Street Community Foundation has distributed **\$1,696,293** in grants and scholarships to support many worthy causes and organizations in your communities.

A grant from the Margaret Haberman Memorial Fund for Music helped the Bristol Parks and Recreation host the 2017 Summer Concert Series at Rockwell Park which provided free fun and entertainment for the whole family.



|  |                  |  |                |  |                |
|--|------------------|--|----------------|--|----------------|
| <b>MONEY IN MOTION GRANTS</b>  | <b>\$9,867</b>   | <b>Connecticut Science Center</b>  | <b>\$2,500</b> | <b>Kellys Kids Inc.</b>  | <b>\$4,000</b> |
| <b>Bristol Board of Education</b>  | <b>\$2,367</b>   | Expand the Bristol Public Schools STEM program to include student programming as well as professional development for teachers |                | Farm animal and nature based summer camp program for school age youth                    |                |
| <b>Bristol Family Resource Center</b>  | <b>\$7,500</b>   | <i>Fuller and Myrtle Barnes Fund for Education</i>   |                | <i>Douglas and Noreen Schumann Special Interest Fund</i>                                 |                |
| Capacity building funds for two part-time child and family advocates   |                  |  |                | <i>Merriman Family Fund</i>  |                |
|  |                  |  |                | <i>Bristol Brass General Grant Fund</i>  |                |
| <b>GRANTS FROM GENERAL GRANT PROCESS</b>   | <b>\$124,060</b> | <b>CW Resources</b>  | <b>\$2,250</b> | <b>Lewis S. Mills High School</b>  | <b>\$5,000</b> |
| <b>Ability Beyond Disability</b>   | <b>\$3,000</b>   | Online work-readiness program to train adults with disabilities  |                | Dugouts for the Varsity Baseball and Softball fields                                     |                |
| Printing equipment for the Printability program for young adults with autism   |                  | <i>Bristol Brass General Grant Fund</i>  |                | <i>James R. Parker Trust</i>   |                |
| <i>Bristol Brass General Grant Fund</i>  |                  | <i>Ciccarelli-Vitale Community Advancement Fund</i>  |                |  |                |
| <i>Gnazzo/Reidy Charitable Fund</i>  |                  |  |                | <b>McCabe Waters Little League</b>   | <b>\$8,560</b> |
| <b>American Red Cross</b>  | <b>\$5,000</b>   | <b>Early Childhood Collaborative of Southington</b>  | <b>\$4,000</b> | Materials to re-sod Frazier and Greenleaf fields   |                |
| Disaster Response and Relief Services including the Home Fire Campaign in Bristol, Burlington, Plainville, Plymouth, Southington and Wolcott |                  | Kindergarten Readiness for Southington's young children  |                | <i>Malerbo Children's Field Maintenance Fund</i>   |                |
| <i>Bristol Brass General Grant Fund</i>  |                  | <i>Bristol Brass General Grant Fund</i>  |                |  |                |
| <i>Jaspersohn Family Memorial Fund</i>   |                  | <i>Fuller and Myrtle Barnes Fund for Education</i>   |                | <b>Meals for the Needy/ Zion Lutheran Church</b>   | <b>\$3,300</b> |
| <b>Bristol Family Resource Centers</b>   | <b>\$5,000</b>   | <b>Ferret Association of Connecticut</b>   | <b>\$500</b>   | Grease Removal System for the soup kitchen   |                |
| People Empowering People (PEP) program to teach parents to become community leaders  |                  | Veterinary care for senior ferrets   |                | <i>Ciccarelli-Vitale Community Advancement Fund</i>                                      |                |
| <i>Fuller and Myrtle Barnes Fund for Education</i>   |                  | <i>Elizabeth I. and Louis J. Matt Animal Protection Fund</i>   |                | <i>Bristol Brass General Grant Fund</i>  |                |
| <b>Bristol Recovery Club</b>   | <b>\$3,800</b>   | <b>For Goodness Sake</b>   | <b>\$5,760</b> | <i>Eva M. Pierce Memorial Charitable Fund</i>  |                |
| New website including a calendar of all ongoing events   |                  | Feels Like Home project to provide families with basic household and hygiene supplies  |                | <b>Memorial Military Museum</b>  | <b>\$500</b>   |
| <i>Bristol Brass General Grant Fund</i>  |                  | <i>Jim &amp; Eleanor Frawley Community Fund</i>  |                | Educational materials for the "Bristol in World War I" Exhibit                           |                |
| <i>Paige Wartonick Laferriere Memorial Fund</i>  |                  | <i>Edward W. and Audrey K. Mink Memorial Fund</i>  |                | <i>Bristol Brass General Grant Fund</i>  |                |
| <b>Burlington Historical Society</b>   | <b>\$2,300</b>   | <i>Bristol Brass General Grant Fund</i>  |                | <b>Middle School of Plainville</b>   | <b>\$1,790</b> |
| Town History program for second graders attending Regional School District 10 elementary schools   |                  | <b>GetUp Stage Company</b>   | <b>\$2,500</b> | Colorsources spot light for use in the auditorium  |                |
| <i>James R. Parker Trust</i>   |                  | Tuition support for summer musical theater program for teens and young adults  |                | <i>Bristol Brass General Grant Fund</i>  |                |
| <b>Connecticut Humane Society</b>  | <b>\$2,900</b>   | <i>Bristol Brass General Grant Fund</i>  |                | <b>New Britain Museum of American Art</b>  | <b>\$2,000</b> |
| Medical Support Program for pets impounded by municipal animal control agencies  |                  | <i>JoAnn &amp; David Mills Family Fund</i>   |                | Access to the Arts educational program for Wolcott students                              |                |
| <i>Elizabeth I. and Louis J. Matt Animal Protection Fund</i>   |                  | <i>Jay &amp; Elizabeth Tyrrell Fund for the Arts</i>   |                | <i>Bristol Brass General Grant Fund</i>  |                |
|  |                  | <b>Junior Achievement of Southwest New England</b>   | <b>\$2,500</b> | <b>New England Carousel Museum</b>   | <b>\$3,400</b> |
|  |                  | Financial literacy, work readiness and entrepreneurship program in Bristol schools   |                | Music-Art-Technology-History (MATH) pilot program for Bristol elementary school students |                |
|  |                  | <i>City of Bristol Treasurer's Fund for Financial Awareness</i>  |                | <i>Bristol Brass General Grant Fund</i>  |                |
|  |                  |  |                | <i>Angela and Al Caruso Family Charitable Fund</i>                                       |                |
|  |                  |  |                | <i>Tedesco-Gallant Charitable Fund</i>   |                |

continued on next page



|   |          |   |           |   |           |
|---|----------|---|-----------|---|-----------|
| <b>Nutmeg Big Brothers Big Sisters</b><br>Community Based Mentoring program in the Foundation's service area<br><i>Bristol Brass General Grant Fund</i><br><i>Formagioni-Lodovico Family Fund</i><br><i>Ronald F. &amp; Emilie P. Duhaime Family Fund</i>                     | \$2,000  | <b>Tabernacle Christian Church</b><br>Food for those in need in the communities served by the Foundation<br><i>Bristol Savings Bank Fund</i>  | \$2,000   | <b>Hartford HealthCare Senior Services</b><br>2018 Healthy Family Fun Fest  | \$10,000  |
| <b>Nutmeg Symphony Orchestra</b><br>2018 Educational Children's Concert for 3rd grade students in Regional School District 10<br><i>James R. Parker Trust</i>   | \$1,250  | <b>Terryville Plymouth Little League</b><br>Fence repairs at Janser and Worhunsky fields<br><i>Bristol Savings Bank Fund</i>  | \$1,500   | <b>Living In Safe Alternatives, Inc.</b><br>1-2-3 Prevention, Intervention & Recovery program   | \$25,600  |
| <b>Oak Hill/Chapter 126</b><br>Mindfulness Group Classes and Workshops at Chapter 126<br><i>Bristol Brass General Grant Fund</i><br><i>Calvanese Foundation Green &amp; White Fund for Behavioral Health</i>  | \$1,500  | <b>The Agape House</b><br>Pantry items and supplies for the Agape Day Center for the homeless<br><i>Bristol Savings Bank Fund</i>   | \$750     | <b>Mulberry Gardens of Southington</b><br>Improve <i>Good Life Fitness</i> program through gym renovations and new exercise equipment | \$67,079  |
| <b>Operation Fuel</b><br>Emergency Energy Assistance for residents in communities served by the Foundation<br><i>Bristol Brass General Grant Fund</i>   | \$2,000  | <b>The Salvation Army</b><br>Creative Arts and Music (CAM) program for Bristol youth in K-12th grade<br><i>Douglas and Noreen Schumann Special Interest Fund</i><br><i>Bristol Brass General Grant Fund</i><br><i>Margaret Haberman Memorial Fund for Music</i> | \$2,500   | <b>Southington Community Cultural Arts Center</b><br>Expansion of the <i>All Access</i> program for adults with disabilities          | \$100,000 |
| <b>Parent &amp; Child Center at Bristol Hospital</b><br>The Family Life Works Program which provides comprehensive education and referral services to at-risk families<br><i>Douglas and Noreen Schumann Special Interest Fund</i><br><i>Bristol Brass General Grant Fund</i> | \$6,000  | <b>Wolcott Citizens Against Substance Abuse</b><br>Social marketing campaign on the dangers of underage drinking<br><i>Bristol Savings Bank Fund</i>  | \$2,000   | <b>The Hospital of Central Connecticut</b><br>Repurpose medical office space in Southington to establish a behavioral health clinic   | \$54,000  |
| <b>Prudence Crandall Center, Inc.</b><br>Domestic and Teen Dating Violence Prevention and Outreach program in Southington<br><i>Calvanese Foundation Green &amp; White Fund for Behavioral Health</i><br><i>Bristol Brass General Grant Fund</i>                              | \$3,000  | <b>Wolcott Crossroads</b><br>Projection system for the STAR prevention program to strengthen decision making and leadership skills in middle-school youth<br><i>Bristol Savings Bank Fund</i>   | \$5,000   | <b>United Way of Southington</b><br>Expanded transportation program for seniors in Southington  | \$40,000  |
| <b>Reach Out and Read</b><br>Expand Early Literacy Partnership with local pediatricians to encourage parental involvement in reading<br><i>Bristol Savings Bank Fund</i><br><i>Bristol Brass General Grant Fund</i><br><i>Turkus Family Fund</i>                              | \$4,000  | <b>GRANTS FROM BRADLEY HENRY BARNES AND LEILA UPSON BARNES MEMORIAL TRUST</b>   | \$724,011 | <b>Wheeler Clinic</b><br>Southington Health Outreach Project  | \$80,000  |
| <b>Safe Harbor</b><br>Coordinator position for Safe Harbor Youth Services which provides substance-free activities for students in Burlington<br><i>James R. Parker Trust</i>   | \$5,000  | <b>Alzheimers' Resource Center of Connecticut</b><br><i>Hope Full Lives</i> , a community-based program for caregivers of people with dementia  | \$35,000  | <b>GRANTS FROM THE BURLINGTON COMMUNITY FUND</b>  | \$6,300   |
| <b>St. Philip House</b><br>Grant writing consulting support<br><i>Bristol Brass General Grant Fund</i><br><i>Bristol Savings Bank Fund</i>  | \$5,000  | <b>Alzheimers' Resource Center of Connecticut</b><br>Establish the <i>Dementia Friendly Southington</i> initiative  | \$115,500 | <b>Boy Scouts of America Troop 23</b><br>Shelving and camping gear  | \$500     |
| <b>St. Vincent DePaul</b><br>Capacity building funds for an Outreach Case Manager<br><i>Money in Motion Fund</i><br><i>Bristol Brass General Grant Fund</i><br><i>Smith Family Charitable Fund</i>  | \$10,000 | <b>Early Childhood Collaborative of Southington</b><br>Educational initiatives for Southington's young children   | \$23,150  | <b>Burlington Fire Department</b><br>Two refurbished AEDs   | \$2,300   |
|   |          | <b>Hartford HealthCare at Home</b><br>Expand integrated care for Southington Seniors  | \$80,000  | <b>Imagine Nation, A Museum Early Learning Center</b><br>Imagine Nation Loves Burlington Day  | \$1,000   |
|   |          | <b>Hartford HealthCare Senior Services</b><br>Expansion of dementia education and training program for caregivers and families  | \$58,682  | <b>Lewis S. Mills Football Boosters</b><br>Safe and updated tackling equipment  | \$500     |
|   |          | <b>Health Assistance InterVention Education Network</b><br>Educational symposium on addiction and compulsive behavior   | \$35,000  | <b>Lewis S. Mills High School</b><br>Mirrors for the weight room  | \$1,000   |
|   |          |   |           | <b>Nutmeg Symphony Orchestra</b><br>2018 concert for young children   | \$1,000   |
|   |          |   |           | <b>GRANTS FROM MAKE A MARK REGION 10 ENRICHMENT FUND</b>  | \$7,765   |
|   |          |   |           | <b>Regional School District 10</b><br>Odyssey of the Mind Teams at Lewis S. Mills High School and Har-Bur Middle School               | \$1,000   |
|   |          |   |           | <b>Regional School District 10</b><br>Developing Appreciation of World Cuisine at Lewis S. Mills High School                          | \$800     |

|  |                |   |                 |   |                  |
|--|----------------|---|-----------------|---|------------------|
| <b>Regional School District 10</b><br>Empowerment Group project at Lewis S. Mills High School  | \$900          | <b>Plainville High School</b><br>Mindful Intention program  | \$500           | <b>Jane Doe No More</b><br><i>Safe Student Initiative</i> at Lewis S. Mills High School, which educates students on the prevention of sexual violence   | \$3,000          |
| <b>Regional School District 10</b><br>Boomerang Project WEB at Har-Bur Middle School   | \$698          | <b>Plainville Wind Ensemble</b><br>Concert series   | \$1,200         | <b>John J. Driscoll United Labor Agency</b><br><i>Building Pathways CT</i> , a program which gives women the opportunity to have a career in the trades   | \$5,000          |
| <b>Regional School District 10</b><br>Unified Learning Activity at Har-Bur Middle School   | \$580          | <b>St. Phillip House</b><br>Basic needs for supportive housing clients  | \$1,000         | <b>Literacy Volunteers of Central Connecticut</b><br><i>Family Sustainability through Literacy Plus</i> , a program to increase reading, writing, math and financial literacy for women and their children                                | \$2,500          |
| <b>Regional School District 10</b><br>The Gift of Reading at Lake Garda Elementary School  | \$660          | <b>GRANTS FROM THE WOMEN &amp; GIRLS' FUND</b>  | <b>\$53,111</b> | <i>Women &amp; Girls' Fund</i><br><i>Dumont Family Charitable Fund</i>  |                  |
| <b>Regional School District 10</b><br>Promoting STEM and Social Skills through Purposeful Play at Lake Garda Elementary School and Harwinton Consolidated School | \$608          | <b>Boys &amp; Girls Club and Family Center of Bristol</b><br><i>SMART Girls</i> , a health, fitness, education and self-esteem program<br><i>Women &amp; Girls' Fund</i><br><i>Barbara Hackman Franklin Fund for Women</i>    | \$2,500         | <b>Prudence Crandall Center</b><br><i>Partnership to Promote Healthy Relationships</i> , a program that provides domestic and teen dating violence prevention services for youth in Plainville Community Schools                          | \$4,000          |
| <b>Regional School District 10</b><br>National Archery in the Schools program at Lewis S. Mills High School  | \$519          | <b>Bristol Family Resource Center</b><br>Education and support for Licensed Day Care Providers<br><i>Women &amp; Girls' Fund</i><br><i>Furey Family Charitable Fund</i>   | \$2,500         | <b>Rushford Center</b><br>Support to provide women in the behavioral health outpatient treatment programs with alternative therapies such as yoga, meditation and fitness training  | \$8,000          |
| <b>Regional School District 10</b><br>STEM Connections at Lewis S. Mills High School   | \$600          | <b>Bristol Preschool Child Care Center</b><br>Three early learning workshops for parents and children which will focus on early literacy and language and physical development  | \$2,456         | <b>The Children's Museum</b><br><i>Girls &amp; Science</i> , a program that provides 15 female students in grades 1-6 from the Boys & Girls Club of Bristol Family Center to participate in a one-week, hands-on STEM summer camp program | \$4,300          |
| <b>Regional School District 10</b><br>Flexible Seating for All at Harwinton Consolidated School  | \$900          | <b>Bristol Youth Services</b><br>Skills to Pay the Bills, a program which provides social, educational and independent living skills<br><i>Women &amp; Girls' Fund</i><br><i>Dumont Family Charitable Fund</i>                | \$2,100         | <i>Women &amp; Girls' Fund</i><br><i>John &amp; Gloria DiFrancesco Fund for Women and Girls</i>   |                  |
| <b>Regional School District 10</b><br>Husky Club at Har-Bur Middle School  | \$500          | <b>Connecticut Women's Education and Legal Fund</b><br>Increase access of low income women to free legal information, bilingual advocacy and referrals to low cost attorneys  | \$4,000         | <b>GRANTS FROM DESIGNATED FUNDS/AGENCY ENDOWMENTS/FIELD OF INTEREST</b>   | <b>\$245,070</b> |
| <b>GRANTS FROM THE PLAINVILLE COMMUNITY FUND</b>   | <b>\$9,000</b> | <b>Connecticut Women's Education and Legal Fund</b><br>The Connecticut Women's Collaborative  | \$2,000         | <b>American Clock &amp; Watch Museum</b><br><i>American Clock &amp; Watch Museum, Inc. Fund</i>   | \$7,700          |
| <b>Junior Achievement of Southwest New England</b><br>Economic empowerment program for students at Toffolon School   | \$750          | <b>For Goodness Sake</b><br>Provide families with either a basic needs basket or appliance package as they make the transition to independent living<br><i>Women &amp; Girls' Fund</i><br><i>Smith Family Charitable Fund</i> | \$4,255         | <b>Bristol Navigator Program</b><br><i>Kalt Moreau Family Fund – "Ready Set Go!"</i>  | \$500            |
| <b>New Britain Museum of American Art</b><br>Student Art Show and reception  | \$500          | <b>Girl Scouts of Connecticut</b><br>2018 summer camperships  | \$2,500         | <b>Boys &amp; Girls Club of Bristol Family Center</b><br>Charles Kushlan Memorial Fund  | \$2,000          |
| <b>New Britain Symphony Orchestra</b><br>2017 Young People's concert   | \$750          | <b>Imagine Nation, A Museum Early Learning Center</b><br><i>A Healthy Imagine Nation – Creating a Happy Healthy Start</i> , a program to promote a healthy lifestyle to children and their families                           | \$4,000         | <b>Boys &amp; Girls Club of Bristol Family Center</b><br><i>Sky Bight Foundation Fund for the Bristol Boys &amp; Girls Club</i>   | \$3,520          |
| <b>PARC</b><br>Financial assistance for Camp Trumbull participants   | \$1,275        |   |                 |   |                  |
| <b>PCS Youth Theater</b><br>Camperships for summer youth theater   | \$500          |   |                 |   |                  |
| <b>Plainville Adult and Continuing Education</b><br>Customer service/sales certificate program   | \$1,525        |   |                 |   |                  |
| <b>Plainville Early Learning Center</b><br>Four-seat stroller to transport pre-schoolers safely  | \$1,000        |   |                 |   |                  |

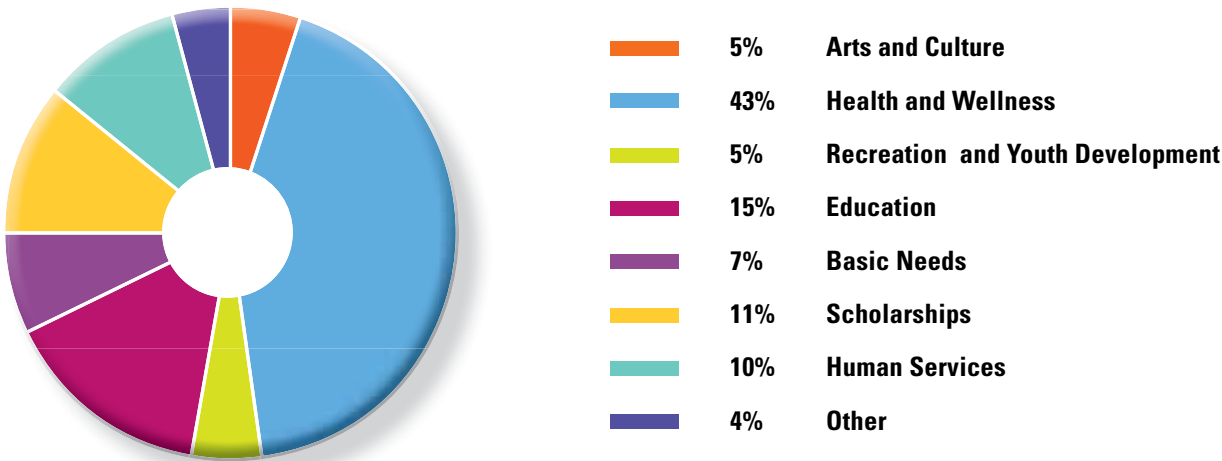
continued on next page

|   |          |   |                  |  |                  |
|---|----------|---|------------------|--|------------------|
| <b>Boys &amp; Girls Club of Bristol Family Center</b><br><i>Edward Ingraham Fund</i>                        | \$1,180  | <b>Imagine Nation, a Museum Early Learning Center</b><br><i>Sid Bernard &amp; Ed Miller Children's Fund for the Visual Arts</i>   | \$350            | Connecticut Public Broadcasting<br>Dean College<br>Environmental Learning Centers of Connecticut<br>Fidelco Guide Dog Foundation<br>First Congregational Church United Church of Christ<br>For Goodness Sake<br>Franklin Land Trust<br>Goodspeed Opera House Foundation<br>Greater Hartford Arts Council<br>Hartford Symphony Orchestra<br>Main Street Community Foundation<br>The Masters School<br>Men & Boys' Fund at Main Street Community Foundation<br>National Conference for Community and Justice<br>New England Carousel Museum<br>Plymouth Community Food Pantry<br>Renbrook School<br>Salvation Army<br>Shepard Meadows Therapeutic Riding Center<br>Southington-Cheshire Community YMCAs<br>St. Paul Catholic High School<br>St. Vincent DePaul Mission of Bristol<br>Trustees of Deerfield Academy<br>United Way of West Central Connecticut<br>UConn School of Business<br>University of Hartford<br>Valley Community Baptist Church<br>Women & Girls' Fund at Main Street Community Foundation |                  |
| <b>Bristol Business Education Foundation</b><br><i>Bob and Carol Messier Family Fund</i>                    | \$700    | <b>New England Carousel Museum (Fire Museum)</b><br><i>Hap Barnes Fund for Fire Safety and Prevention</i>   | \$3,450          |  |                  |
| <b>Bristol Family Resource Centers</b><br><i>Mama Sandy Caggiano Fund</i>                                   | \$220    | <b>Music Lessons for Bristol Students in Need</b><br><i>Dan Cistulli Memorial Music Fund</i>  | \$1,250          |  |                  |
| <b>Bristol Hospital Development Foundation</b><br><i>Bristol Hospital Development Foundation Fund</i>       | \$7,720  | <b>Parent &amp; Child Center at Bristol Hospital</b><br><i>Men &amp; Boys' Fund</i>   | \$1,200          |  |                  |
| <b>Bristol Youth Services</b><br><i>Men &amp; Boys' Fund</i>  | \$2,000  | <b>Plymouth Board of Education</b><br><i>Plymouth Century Club Fund</i>   | \$460            |  |                  |
| <b>Burlington Library</b><br><i>Burlington Library Association Fund</i>                                     | \$800    | <b>Plymouth Library Association</b><br><i>Plymouth Library Association Fund</i>   | \$810            |  |                  |
| <b>Burlington Historical Society</b><br><i>Burlington Historical Society Fund</i>                           | \$450    | <b>Southington-Cheshire Community YMCAs</b><br><i>Bradley Henry Barnes Fund for the Southington Community YMCA</i>  | \$5,310          |  |                  |
| <b>City of Bristol/Parks and Recreation</b><br><i>Samuel Goodsell Park &amp; Playground Fund</i>            | \$23,330 | <b>Tunxis Community College Foundation</b><br><i>Bristol Career Center of Tunxis Community College Endowment Fund<br/>Bristol Career Center of Tunxis Community College Endowment Fund II<br/>Tunxis Community College Fund<br/>Tunxis Community College II Fund</i>  | \$28,490         |  |                  |
| <b>City of Bristol/Parks and Recreation</b><br><i>Margaret Haberman Memorial Fund for Music</i>             | \$300    | <b>Turn the Towns Teal</b><br><i>Bristol Talks Teal Fund</i>  | \$250            |  |                  |
| <b>City of Bristol/Bristol Public Libraries</b><br><i>Bristol Libraries Fund</i>                            | \$4,080  | <b>United Way of West Central Connecticut, Inc.</b><br><i>United Way of West Central Connecticut, Inc. Fund</i>   | \$7,640          | <b>SCHOLARSHIP GRANTS</b>  | <b>\$180,695</b> |
| <b>City of Bristol/Bristol Public Library</b><br><i>Samuel Goodsell Library Fund</i>                        | \$27,370 | <b>West Cemetery Association</b><br><i>Carlyle F. Barnes Memorial Chapel Fund</i>   | \$16,860         | <b>IMMEDIATE RESPONSE FUND GRANTS</b>  | <b>\$13,681</b>  |
| <b>City of Bristol/F. N. Manross Memorial Library</b><br><i>Manross Memorial Library Fund</i>               | \$76,620 | <b>Wheeler Clinic</b><br><i>Wheeler Clinic/Dennis Keenan Fund</i>   | \$7,740          | <i>Bristol Board of Education<br/>Immediate Response Fund<br/>Karen DuCotey Fund for Kids<br/>Leading Ladies Immediate Response Fund<br/>Main Street Children's Fund<br/>Men &amp; Boys' Immediate Response Fund<br/>Jean Sorey Fund for Single Parent Families<br/>Werner Family Fund<br/>Women &amp; Girls' Immediate Response Fund</i>  |                  |
| <b>City of Bristol</b><br><i>Hap Barnes Fire Safety Trailer Fund</i>  | \$990    | <b>GRANTS FROM DONOR ADVISED FUNDS AND SPECIAL INITIATIVES SUPPORTED THE FOLLOWING ORGANIZATIONS AND CHARITABLE INTERESTS</b>   | <b>\$290,973</b> | <b>ADMINISTRATIVE ENDOWMENT FUND GRANTS</b>  | <b>\$30,760</b>  |
| <b>Connecticut Historical Society</b><br><i>Connecticut Quilt Registry Legacy Fund</i>                      | \$390    | <i>Boys &amp; Girls Club of Bristol Family Center<br/>Bristol Hospital Development Foundation<br/>Bristol Sports Hall of Fame and Museum<br/>Bristol Technical Education Center<br/>Bristol Veterans Council<br/>The Bushnell Center for Performing Arts<br/>Connecticut Children's Medical Center Foundation<br/>Connecticut Forum Inc.<br/>Connecticut Science Center</i> |                  | <i>Main Street Community Foundation<br/>Barnes Group 150th Anniversary Fund<br/>Main Street Community Foundation Endowment Fund<br/>Dave &amp; Edith Scarritt Fund<br/>Yarde Metals Community Support Fund</i>   |                  |
| <b>Connecticut Humane Society</b><br><i>Elizabeth I. and Louis J. Matt Animal Protection Fund</i>           | \$1,100  |   |                  |  |                  |
| <b>Connecticut Mirror</b><br><i>Wally Barnes Fund for Community Leadership Initiatives</i>                  | \$1,000  |   |                  |  |                  |
| <b>Environmental Learning Centers of CT, Inc.</b><br><i>Environmental Learning Centers of CT, Inc. Fund</i> | \$8,110  |   |                  |  |                  |
| <b>Exchange Club of Bristol</b><br><i>Jay &amp; Elizabeth Tyrrell Fund for the Arts</i>                     | \$500    |   |                  |  |                  |
| <b>Hypertrophic Cardiomyopathy Association</b><br><i>Tyler James Gingery Memorial Fund</i>                  | \$680    |   |                  |  |                  |



# GRANTS AT A GLANCE

For the 2017 year, Main Street Community Foundation awarded grants totaling **\$1,696,293**.



**CW Resources, Inc.** was awarded a \$2,250 grant from the Bristol Brass General Grant Fund and the Ciccarelli-Vitale Community Advancement Fund. This grant enabled CW Resources to purchase a skills training program from The Conover Company to enhance its work-readiness program that supports 101 people with disabilities. The training prepared and supported CW learners, like John Davis of Bristol, with the skills needed to maximize opportunities for successful employment in the community.

Phil Trivelli, an employment specialist, teaches job and life skills at CW’s Bristol Center. “I teach individuals how to interact in the community and on the job: basic skills such as following directions, how to work as a team, listening, learning about local and world news and how to make change for a dollar. These new training modules will certainly enhance our program and ability to individualize training. We will be able to access the learner and see exactly where that person needs extra training.”



Children from the Foundation’s service area participated in a farm animal and nature based summer camp program at **Kellys Kids**, an animal therapy program that provides quality education and recreation programs serving diverse groups to improve social and emotional well being. They were awarded a \$4,000 grant from the Douglas and Noreen Schumann Special Interest Fund, the Merriman Family Fund and the Bristol Brass General Grant Fund.

# 2017 SCHOLARSHIP RECIPIENTS



**2017 scholarship recipients** were honored at the Foundation's Scholarship Reception held on June 13, 2017 at the DoubleTree by Hilton Hotel Bristol.

## **4 Burns Scholarship St. Joseph/St. Paul Fund**

Luke Hines  
Gianna Houle

## **Christian Arndt Scholarship Fund**

Jennifer Fisher

## **E. Bartlett Barnes Award of Journalism Fund**

Jaymie Bianca  
Meghan Conlin  
Catherine Gullotta

## **Because of 26 Kindness Award Scholarship Fund**

Emily Gibney

## **Sid Bernard Memorial Art Scholarship Fund**

Amanda Palladino

## **Stanley P. Bitel Memorial Fund**

Natallie Jesionka

## **Peter and Marjorie Bossi Educational Fund**

Kayla Rozanski

## **Bowerman Scholarship Fund**

Gary Gagnier

## **Bristol Boys & Girls Club Schulman Fund**

Isabella Castrogiovanni  
Anthony Lozier

## **Bristol Lions Club F. Fred Soliani Memorial Scholarship Fund**

Mikayla Lewandoski

## **Bristol Police Scholarship Fund**

Anthony Lozier

## **Bristol Yale Club Scholarship Fund**

Felicity Irizarry  
Gabriella Williams

## **Burlington Lions Charities Scholarship Fund**

Patrick Currier  
Kevin Kryzwick  
Jacob Paciotti

## **Conn Acoustics Scholarship Fund**

Angela DeFilippo  
Angelika Muter

## **Peg Coughlin Nursing Scholarship Fund**

Isabella Castrogiovanni

## **Rit Croce Academic and Vocational Scholarship Fund**

Christine Burrill

## **Richard A. DellaVecchia Scholarship Fund**

Jesse Rasten

## **Jeffrey Downes Memorial Scholarship Fund for the Trades**

Brandon Cornish

## **Karen Finder Scholarship Fund**

Zada Gonzalez

## **Carolyn Fisher Scholarship Fund**

Christian Robinson

## **Olivia Fusco Memorial Art Scholarship Fund**

Katerina Belales

## **GE's Industrial Solutions Scholarship Fund**

Justin Greenwood  
Hannah Jackman  
Hank Leitzke  
Jarod Romankiv  
Alexandra Schulz  
Hannah Schulz  
Renukanandan Tumu

## **Andrew and Murielle Giacomini Scholarship Fund**

Taya Watson

## **Azilda Hebert Music Scholarship Fund**

Lauren Santiago

## **Dorothy Micloskey Ives Award Fund**

Lauren Santiago

## **Grace & Norma Joy Scholarship Fund**

Franness Luna

## **Keating-Monaghan Memorial Scholarship Fund**

Jaletex Arroyo  
Marisol Barresi  
Cole Beland  
Abagale Benoit  
Brandon Benoit  
Nathan Carlson  
Ethan Casinghino  
Elizabeth Connelly  
Joseph Dess Jr.  
Amy Dognin  
Gabriela Drewniak  
Donovan Durham  
Madison Durham  
John Fontanez-Ceballos  
Jordan Gayle  
Michael Haddon  
Kylan Kelly  
Jayme Lopez  
Elijah Martin  
Ryan Martin  
Nina Mattioli  
Chase Mendela  
Nicholas Middlebrook  
Genevieve Mowad  
MaKendra Jae Mowad  
Alejandro Ojeda  
Cydney Pelletier  
Gisselle Pena  
Bella Peterson  
Michael Rigsby  
Annette Rodriguez  
Elizabeth Ruffino  
Gianna Soto  
Hannah St. John  
Noah Stevens  
Brian Wilson  
Cody Wilson  
Danny Wilson  
Emilia Wilson



**Lena M. and Peter L. Korotie  
Scholarship Fund**  
Jonathon Passander

**Vincent T. Kozyrski  
Scholarship Fund**  
Simon Andrews

**Sean Landry Memorial  
Basketball Scholarship Fund**  
John Grimes

**John J. and Doris Lazorik  
Memorial Scholarship Fund**  
Mikayla Lewandoski  
Casey Walters

**Leger Initiative for  
Education Fund**  
Kaitlin Steinen

**Dave Lepore Journalism  
Scholarship Fund**  
Taylor Hartz

**Thérèse MacCallum "Great  
Kid" Scholarship Fund**  
Deep Aluria  
McKenna Belury

**Nicholas P. Maglio ACE Fund**  
Christopher LeBeau

**Malerbo Memorial  
Scholarship Fund**  
Gabrielle Bernier  
Madison Bernier  
Amarion Brooks  
Emma Daly  
Jenna Fulvi  
Adrian George  
Patrick George  
Sophia Gerst  
Priscilla Godlewski  
Lexi Gosselin  
Thomas Lorenzetti  
Evan Mendela  
Rudolph Otero  
Christian Peterson  
Barbara Retartha  
Sean Rozmajzl  
Walker Sharp  
Jade Udoh  
Noah Waters  
Darek Wiecki  
Nina Zwolinski  
Stefan Zwolinski

**Elizabeth I. and Louis J. Matt  
Medical Scholarship Fund**  
Laura Furtak  
Nancy Ongany  
Lauren Tanner  
Nicole Truskowski

**Robert E. and Angeline P.  
McCormack Scholarship Fund**  
Samantha Steeves

**McMaster-Moulthrop  
Scholarship Fund**  
Simon Andrews  
Marianna Apergis  
Morgan Begin  
Autumn Blasi  
Marco Guzman  
Natalie Jesionka  
Scott Larson  
Nancy Ongany  
Sofia Patria  
Colin Savino  
Sarah Strilkauskas  
Nicole Truskowski  
Molly Watstein  
Ashley Yung

**Ken E. Micloskey Award**  
Bradley Kozikowski

**Al and Joan Monico  
Scholarship Fund**  
Felicity Irizarry  
Francesca Luna

**NESMA Scholarship Fund**  
Natalie Jesionka  
Ashley Nelson

**AJR Nocera Memorial Fund**  
Alexa Cahill  
Kayla Rozanski

**Scott W. Organ Student-  
Athletic Scholarship Fund**  
Cole Staples

**Ralph Papazian Memorial  
Scholarship Fund**  
Autumn Blasi

**Estelle Delano Peterson  
Scholarship Fund**  
Kelsey Turgeon

**Dorothy Dewey Picard Music  
Scholarship Fund**  
Lauren Santiago

**Plymouth Community Club  
Scholarship Fund**  
John Grimes

**Max and Ruth Rabin  
Scholarship Fund**  
Gabriella Williams

**Radcliff Family Education Fund**  
Alexa Cahill  
Tyrah Green  
Katie Pelkey  
David Poniatowski

**Radcliff Plainville  
High School Fund**  
Jared Demmons  
Stephen Gallo  
Gregory Sileo  
Nicholas Zaleski

**Louis J. Rascoe  
Scholarship Fund**  
Gillian Strahowski

**Julie A. Roche Nursing  
Scholarship Fund**  
Isabella Castrogiovanni

**Douglas Roland Aid for the  
Trades Scholarship Fund**  
Marena Baldyga

**Clement J. Roy  
Scholarship Fund**  
Mikayla Lewandoski

**St. Matthew School  
Scholarship Fund**  
Luke Crowley

**Lawrence (Larry) Selza  
Memorial Scholarship Fund**  
Audrey Gallo

**Glo Sessions Fund for  
Art Education**  
Amanda Palladino

**Jill Lynne Shackett  
Educational Scholarship Fund**  
Marissa Brevetti  
Ashley Yung

**Southington Observer/  
StepSaver Scholarship Fund**  
Rachel Wrinn

**Jay W. and Elizabeth M. Tyrrell  
Scholarship Fund**  
Pia Barlotta  
Alexa Cahill

**Louise (Humphrey) Van Gorder  
Music Camp Scholarship Fund**  
Luke Ashworth

**Dr. Joan T. Wallace Prize for  
Highest Achievement in English  
at Southington High School**  
Nickolina Doran  
Rebecca Lo Presti

**Peggy Ann Walsh Memorial  
Scholarship Fund**  
Raina Lambert  
Mikayla Lewandoski  
Casey Walters  
Ashley Yung

**Kristen Warner  
Scholarship Fund**  
Jesse Rasten

**John Whitcomb  
Scholarship Fund**  
Tejal Monteiro

**Eva Brodowicz Wickwire  
Volunteer Scholarship Fund**  
Isabella Castrogiovanni

**Yarde Metals Memorial  
Scholarship Fund**  
Carly Brunelle  
Melody Catalano  
Nicole Collin  
Gary Gagnier  
David Kaminski  
Nicole Ledesma  
Dillon Murphy  
Alexis Thompson  
Jennifer Thorpe



Brandon Cornish received the Jeffrey Downes Memorial Scholarship Fund for the Trades to continue his education in electronics at the Bristol Technical Education Center.





To sustain longevity,  
you have to **evolve.**  
*Aries Spears*

# C ommunity leadership

The Foundation's community leadership efforts, also known as "Money in Motion", address a broad range of community goals. We identify opportunities within the community to support meaningful dialogue on issues affecting the towns we serve. We convene community members, assess changing needs, and propose action on critical concerns. In this way, we are able to develop collaborative solutions to meet emerging needs and provide support to what matters most to the people who live and work in the cities and towns of this region.

## FRC Able to Continue Services Thanks to Money in Motion Grant

The Family Resource Centers (FRC's) at West Bristol School and South Side School are two of over 70 FRCs funded largely by grants from the State Department of Education. However, of the 72 original FRC's in the State of Connecticut, 15 have either closed or reduced their hours and services drastically due to cuts in funding.

In 2017, the Bristol Board of Education and Bristol Family Resource Centers received a \$7,500 bridge grant from the Money in Motion Fund at Main Street Community Foundation. "Because of this grant from MSCF and support from the Bristol Board of Education, we were able to keep the doors of South Side School's Family Resource Center open with a full time certified parent educator. Each school has their own unique needs, and a school-based Parent Educator is necessary to respond effectively to those needs," said Linda Rich, Director of Bristol's FRC's.

Every FRC builds its programming around seven core components: school readiness programs, support of school-aged children, resources/referrals, families in training, adult education, support for home daycare providers, and positive youth development.

Grants from funds at the Main Street Community Foundation have been crucial to providing the seed money necessary to the expansion, enrichment and enhancement of programs at the Bristol FRC's.

In addition to the bridge grant, Bristol FRC's received four grants from funds held at the Main Street Community Foundation to help provide targeted, quality programs and services for Bristol Families.

A \$5,000 grant from the Fuller and Myrtle Barnes Fund for Education provided funds for a People Empowering People (PEP) leadership program facilitator, as well as staffing for childcare during the sessions to enable parent participation.

"PEP is the best thing I've ever done," stated Marybeth Hicking, a West Bristol School parent of six children. "Before I



Books are distributed to incoming kindergarten students at South Side School.

participated in PEP, I did not want to lead anything. I was shy." After successfully completing the PEP Program, Marybeth Hicking has served as PTO President at West Bristol School, fills food backpacks, and has been involved in Play and Learn groups, Raising Readers, and home visits.

A \$2,250 grant from the Women & Girls' Fund and a \$250 grant from the Furey Family Charitable Fund supported professional development of home daycare providers so that they can provide a developmentally appropriate, safe, and educational home daycare setting.

A \$220 grant from the Mama Sandy Caggiano Fund helped provide scholarships to South Side School Students who wished to attend summer camp programs by assisting their families with the cost of attendance.

In 2017, a total of \$15,220 was awarded to Bristol FRC's through five funds at Main Street Community Foundation. This funding was an important investment in need based programs that have strengthened, educated, and empowered Bristol families and caregivers.



## Main Street Community Foundation Receives National Recognition; Confirmed in Compliance with National Standards

Main Street Community Foundation is pleased to announce that on August 22, 2017, it has received accreditation from the Community Foundations National Standards Board once again. Compliance with National Standards for U.S. Community Foundations™, the nation's highest standard for philanthropic excellence represents our Foundation's commitment to go above and beyond federal and state law requirements to demonstrate accountability and excellence to communities, policymakers and the public.

The National Standards for U.S. Community Foundations® establishes legal, ethical and effective practices for community foundations and requires adherence to documented policies for donor services, investments, grantmaking and administration.

"This is critically important to our community," said Susan Sadecki, President & CEO of Main Street Community Foundation. "When people make a charitable bequest or establish a fund, they are putting their trust in us. They are counting on us to manage the investment wisely and honor their charitable wishes. When nonprofit organizations come to us for assistance, monetarily and otherwise, they can be assured our grantmaking policies and procedures are sound. The National Standards accreditation confirms our house is in order."

Main Street Community Foundation works to meet changing and emerging community needs through its role as a funder, community leader, convener and advocate.

For more information about the National Standards program visit [www.cfstandards.org](http://www.cfstandards.org).



## Walsh Summer Work Experience Program Fills Vital Need

The beginning of the 2017 summer brought news that the City of Bristol was not expecting. The State Summer Youth Employment Program positions in Bristol would be eliminated due to Connecticut's absence of a state budget.

Despite the jarring news, 30 Bristol high school students were given the opportunity to work a meaningful job within their community at local employer sites while developing the skills and personal qualities necessary for success in the workforce. The Walsh Summer Work Experience Program (WSWEP) was funded with a grant from the Tim and Mary Walsh Charitable Fund at Main Street Community Foundation and coordinated by the United Way of West Central Connecticut. It was started nearly a decade ago to initially serve additional youth that were not served

by the state-funded program due to limited funding and eligibility requirements.

"WSWEP filled a vital need in the Bristol community this summer," said Susan Sadecki, President & CEO of Main Street Community Foundation. "The grant award was expanded to fund 10 more slots even before we knew the state program would be cancelled."

The first week of the program was spent in a classroom with Professor Christina Welch who had developed an innovative classroom curriculum with a strong focus on career readiness skills and social and emotional learning. The following six weeks provided each student a real world work experience four days a week, while the fifth day was spent in the classroom and on thoughtfully planned career exploration field trips.

The work values the students adopted on the job were reinforced during the weekly classes. All students demonstrated

increased knowledge and aptitude of social and emotional intelligence, and 85 percent of participants were rated as meeting or exceeding expectations by their employers.

"What really makes the WSWEP unique is the classroom curriculum and the field trips to employer sites in varying industries," stated Nancy Micloskey, United Way Community Impact Assistant Coordinator. "We're really looking at the lifelong impact that this program can have on the students."

All participants completed the program and several students were hired at their worksites. Several other worksites asked to have the students return the following summer.

"A recurring comment from the students at the end of the program was that they hope to give back someday with an opportunity similar to the one that was given to them," said Nancy Micloskey.

## Students with Autism Benefit from Pilot Project

Harry is much shorter than his new friends at Bristol Public Schools, but his eyes light up during the introduction and he confidently greets them with a friendly, "Hello!" and a wave. He is ready to play some learning games.

Harry is a product of Movia Robotics. The firm approached the school district with an innovative plan to use robots as a learning tool to teach students with autism by engaging and interacting with them in a small group setting, facilitated by a human specialist. A \$2,367 grant from the Money in Motion Fund to Bristol Public Schools through the Main Street Community Foundation, in collaboration with grants from the Stocker Foundation and the Barnes Foundation, funded the \$7,300 total cost of the pilot program.

A cohort of students with autism and their non-disabled peers participated in the pilot program twice a week for 30 minutes each session at Stafford and Hubbell Elementary Schools. Lessons were planned by Bristol Public Schools

teachers in partnership with Movia staff, tailored to each child's individual education plan. As the students met with Harry in small groups, they learned and practiced the social pragmatics of sustaining eye contact with the robot, engaging in reciprocal greetings and interactive communication.

Academic skills such as the recognition of sight words and phonics were also reinforced. Non-verbal students learned to select appropriate responses to Harry on their tablet devices. Verbal students demonstrated significant increases in appropriate, meaningful utterances and speech. Student engagement was sustained at a high level.

Why would the district opt to enhance teaching using a robot? Children on the autism spectrum tend to be more interested in objects than people. While the robots are animate and react similarly as a person would, they are not as confusing to the students. Children with autism often find social interaction difficult because of humans' complex and diverse communication styles — word choices, inflection, tone of voice, body language and facial expressions can vary tremendously from person to person.

These communication nuances and unpredictability can be difficult for children with autism, often causing anxiety that

can interfere with learning. Movia robots deliver lessons in a patient, consistent, non-judgmental manner. This non-threatening environment encourages active participation, sustained engagement, repeated practice, healthy risk-taking, success and increased confidence in the learning process. It is important to note that a trained professional is present to facilitate the interactions. This is a new science, and not a replacement for the teacher. Instead, it is to be utilized as an educational tool by teaching professionals.

"The Movia Robotics program is an exciting, innovative product that needs a little more time to develop. We are looking forward to future iterations of the robot and continue to collaborate, providing feedback and suggestions to product development," said Dr. Michael Dietter, Director of Special Services at Bristol Public Schools. The Bristol Board of Education is waiting for retention data to be compiled and analyzed before any discussion can be initiated regarding implementation of the program on a larger or longer-term scale. "The ultimate goal is for the students to retain and generalize what they have learned by applying their new skills — today and months from now — to interactions with other people in their classrooms, families, and community," stated Dr. Dietter.







The best plans **evolve**.  
*John Paul Caponigro*

# **S**tewardship of assets

The role of the **Main Street Community Foundation** as a steward of permanent assets provides a unique service to the community. Each of the funds listed in this report was established by a donor with a very specific purpose in mind. Safeguarding assets in perpetuity to honor donor intent is a responsibility we uphold every day. Administered prudently and thoughtfully, endowments will continue to provide a stable source of funding to projects, programs, and organizations in the Foundation's service area. All financial policies instituted by the Foundation are cornerstones of that prudent stewardship.

**For a full description of each named fund, visit  
[www.mainstreetfoundation.org](http://www.mainstreetfoundation.org)**

# FUNDS

## DONOR ADVISED FUNDS

These funds allow donors to participate actively in grantmaking by making grant recommendations to the Foundation's Board of Directors.

|   |  |  |  |
|---|--|--|--|
| Tom & Melanie Barnes Family Fund (2004)                                 | Clement Family Fund (2010)                       | Furey Family Charitable Fund (2005)                | Stephen and Katherine Saman Memorial Fund (2015) |
| Betts Family Fund (2017)  | Denorfia Family Charitable Fund (2003)           | Greater Bristol Chamber of Commerce Fund (2000)    | Smith Family Charitable Fund (2004)              |
| The Broad View Fund (2016)  | Dumont Family Charitable Fund (2000)             | Hamzy Family Charitable Fund (2010)                | Technical Education Fund (2005)                  |
| Bill & Janet Brownstein Charitable Fund (2015)                          | Cheryl Dumont-Smith Community Fund (2007)        | Pat & Morrie Laviero Family Charitable Fund (2015) | Tim and Mary Walsh Charitable Fund (2011)        |
| John Brozinski and Anne Povilaitis Pulmonary Rehabilitation Fund (2003) | Pattie & Bill Dunn Family Charitable Fund (2011) | John & Sandra Leone Family Charitable Fund (2008)  | Pat & Bob Wollenberg Charitable Fund (2017)      |
| Caiaze Family Charitable Fund (2013)                                    | Fiondella Fund (2001)                            | Muncy/Smith Family Fund (2007)                     | Jane Woodard Charitable Fund (2017)              |
| George & Maureen Carpenter Family Charitable Fund (2013)                | Terry and Marguerite Fletcher Family Fund (2007) | Geoffrey M. Pierce Memorial Fund (2017)            | Zomick Family Fund (2006)                        |



The Denorfia Family Charitable Fund awarded a \$1,000 grant to the Southington-Cheshire Community YMCAs to provide camperships to children who wished to attend YMCA Camp Sloper in Southington. The day camp program serves over 2,500 campers each summer and allows them to participate in a variety of activities and events.

## AGENCY ENDOWMENTS

These funds provide nonprofit organizations a full range of endowment management services.

|   |  |  |  |
|---|--|--|--|
| American Clock & Watch Museum, Inc. Fund (1999)     | Burlington Historical Society Fund (2008)              | Plymouth Library Association Fund (1999)                                       | Tunxis Community College Fund (2000)                     |
| Bristol Adult Resource Center Fund (2016)           | Burlington Land Trust, Inc. Fund (2007)                | St. Andrew Mission Endowment Fund (2009)                                       | Tunxis Community College II Fund (2004)                  |
| Bristol Hospital Development Foundation Fund (1999) | Burlington Library Association Fund (1999)             | The Bristol Career Center of Tunxis Community College Endowment Fund (2001)    | United Way of West Central Connecticut, Inc. Fund (1999) |
| Bristol Boys and Girls Club Fund (2004)             | Environmental Learning Centers of CT, Inc. Fund (1999) | The Bristol Career Center of Tunxis Community College Endowment Fund II (2004) | Wheeler Clinic/Dennis Keenan Fund (1999)                 |
|   | Plainville Affordable Housing Corporation Fund (2000)  |  |  |

## DESIGNATED AND PROJECT FUNDS

These funds provide donors the opportunity to designate support for a specific charitable organization or charitable project.

**Bradley Henry Barnes Fund for the Southington YMCA** (transferred in 2011)  
Southington Community YMCA

**Carlyle F. Barnes Memorial Chapel Trust** (transferred in 2007) Originally established in 1936, for the maintenance and upkeep of the Carlyle F. Barnes Memorial Chapel

**Hap Barnes Fund for Fire Safety and Prevention** (2002) Museum of Fire History in Bristol

**Hap Barnes Fire Safety Trailer Fund** (2012)  
To purchase and maintain a fire safety trailer to instruct children about fire safety

**Bristol Libraries Fund** (transferred in 2014)  
For operating or capital expenditures to support the Bristol Public Library in Bristol and the F.N. Manross Memorial Library in Forestville

**Bristol Sports Hall of Fame Fund (BSHOF)** (2005)  
For the general purposes of BSHOF and scholarships for Bristol High School student athletes

**Julius D. Bristol Trust** (transferred in 2007)  
Originally established in 1888, for the back-to-school needs of financially disadvantaged children, administered by Southington Community Services Department

**Mama Sandy Caggiano Fund** (2015)  
Family Resource Center at South Side School in Bristol

**City of Bristol Treasurer's Fund for Financial Awareness** (2012) For a pilot project to promote financial awareness among middle school age students in Bristol

**Connecticut Quilt Registry Legacy Fund** (2002)  
Connecticut Quilt Project of the Connecticut Historical Society

**Corliss Fund for the Bristol Family Resource Centers** (2017)  
Bristol Family Resource Centers

**Estela Wilderness Education Fund** (2012)  
Environmental Learning Centers of Connecticut (ELCCT) for camperships, program development, and trail maintenance

**Friends of Bristol Parks and Recreation Fund** (2013) Bristol Parks and Recreation Department for park enhancement projects

**Tyler James Gingery Memorial Fund** (2009)  
Hypertrophic Cardiomyopathy Association

**Samuel Goodsell Library Fund** (transferred in 2014) The acquisition and purchase of books, preferably nonfiction, for the Bristol Public Library

**Samuel Goodsell Park and Playground Fund** (2013) For the care, maintenance, improvement, acquisition, and extension of the parks and playgrounds in Bristol

**Haiti Medical Fund** (2017)  
Support for humanitarian efforts in Haiti to improve access to essential medical and surgical services and education to medical providers

**Immanuel Lutheran Alumni Tuition Assistance Fund** (2015) Immanuel Lutheran School in Bristol

**Edward Ingraham Fund** (2011) Boys & Girls Club of Bristol Family Center, to provide summer camp experiences for Bristol youth

**Inside Rebecca's Backpack Fund** (2006)  
Southington Community Services, for school supplies, summer school, or other educational opportunities

**Kristen's Kause Fund** (2015) Southington-Cheshire Community YMCAs, for a community-wide fire safety education program which includes information specific to the dangers of fireworks

**Kristen's Wishes Fund** (2007) Southington Community Services, "Wishes" for Youth

**Charles Kushlan Memorial Fund** (transferred in 2006) Bristol Boys and Girls Club Youth of the Year Award

**Manross Memorial Library Fund** (transferred in 2014) For operating or capital expenditures to support the F.N. Manross Memorial Library in Forestville

**Memorial Boulevard School Restoration Fund** (2014) City of Bristol, to repurpose and refurbish the historic Memorial Boulevard School in Bristol

**Bob and Carol Messier Family Fund** (2008)  
Bristol Business Education Foundation mini-grant program

**Oasis Fund** (2014) Town of Plymouth Parks and Recreation Department, for charitable purposes to foster the physical, social and mental health benefits of recreation among Plymouth residents

**Eva M. Pierce Memorial Charitable Fund** (2008)  
Meals for the Needy, Meals on Wheels, St. Vincent DePaul Society of Bristol, the Prudence Crandall Center, The Cancer Center at Bristol Hospital

**Sky Bight Foundation Fund for the Bristol Boys & Girls Club** (2011) Endowment for the Bristol Boys & Girls Club and Family Center facility, which opened in October 2014

A \$350 grant from the Sid Bernard and Ed Miller Children's Fund for the Visual Arts was awarded to Imagine Nation, A Museum Early Learning Center for supplies for the art studio. Here, children practiced their fine motor skills as they used their three point grip to maneuver their pencils around the paper. They drew the giraffe using lines and shapes, and continued with their fine tip marker to add the patterns and make their lines more prominent. The children had different view points of the giraffe, and were able to discuss how their perspectives influenced their drawings.



continued on next page



## FIELD OF INTEREST FUNDS

These funds allow donors to support a broad category of need such as the arts, healthcare, education, environment or a geographic area. Grant recipients are selected by the Foundation's Distribution Committee.

**Bradley Henry Barnes & Leila Upson Barnes Memorial Trust** (transferred in 2004)  
To meet the health and healthcare needs of Southington residents

**Fuller and Myrtle Barnes Fund for Education** (1998) To provide special educational programs and opportunities for teachers and students in the pre-school to 12th grade populations

**Becker Family Fund** (1996) For healthcare, education and social action

**Sid Bernard & Ed Miller Children's Fund for the Visual Arts** (2013) To support programs and projects teaching innovative or traditional art education skills to students from Bristol

**Donna Borysewicz Fund for Women** (2015) To advance initiatives identified by the Women & Girls' Immediate Response Fund of the Foundation

**Bristol Board of Education Immediate Response Fund** (2005) To provide immediate response grants for the children, families and employees of the Bristol School system in need of assistance

**Bristol Talks Teal Fund** (2013) To raise awareness of ovarian cancer and its symptoms, and to assist individuals who suffer from ovarian cancer and may qualify for medical assistance they cannot provide for themselves

**Burlington Community Fund** (2011) For charitable projects and programs that will enhance the quality of life for the citizens of Burlington

**Calvanese Foundation Green & White Fund for Behavioral Health** (2013) To provide support to adults and children residing in Southington who are in need of mental health and/or substance abuse treatment services by providing mental health screening, access to care, and education

**Ciccarelli-Vitale Community Advancement Fund** (2001) For distribution in the fields of education and the environment; to provide assistance to Bristol residents acutely in need

**Dan Cistulli Memorial Music Fund** (2004) Funding for lessons and/or instruments to young people in Bristol who may need financial assistance

**John & Gloria DiFrancesco Fund for Women and Girls** (2011) To advance initiatives identified by the Women & Girls' Fund of the Foundation

**Karen DuCotey Fund for Kids** (2011) For students in Regional School District #10 in need of immediate assistance due to a particular life situation or unexpected financial hardship

**Barbara Hackman Franklin Fund for Women** (2011) To support initiatives identified by the Women & Girls' Fund of the Foundation

**Margaret Haberman Memorial Fund for Music** (2010) For the promotion and appreciation of music in the communities served by the Foundation

**Jaspersohn Family Memorial Fund** (2001) To support programs and organizations which provide humanitarian efforts to the greater Bristol area

**Kalt Moreau Family Fund – "Ready, Set, GO!"** (2015) To instruct and educate Bristol Public School students who have been accepted to college and need assistance to navigate the college acceptance process

**Hal Kilby Athletics Fund** (2016) To support community athletic needs in Bristol

**Paige Wartonick Laferriere Memorial Fund** (2001) To support programs and organizations with preference to health care, education and social action

**Leading Ladies Immediate Response Fund** (2010) For immediate response grants to women and girls in Southington with emphasis on basic needs, health, safety, education, and employment opportunities

**Main Street Children's Fund** (2006) To provide immediate response grants to address the basic needs of children under the age of 18, or to promote the general well-being of area youth

**Make A Mark Region 10 Enrichment Fund** (2009) To advance special and creative initiatives to benefit the students who attend public schools in Burlington and Harwinton

**Malerbo Childrens Field Maintenance Fund** (2005) To provide grants to non-profit organizations in Burlington and Bristol for organized youth sports activities, equipment, or field improvements

**Elizabeth I. and Louis J. Matt Animal Protection Fund** (2006) To provide for the care and support of animals in need in the State of CT

**Men & Boys' Fund** (2016) To provide support for men and boys to improve the quality of their lives and make a positive difference in their communities

**Men & Boys' Immediate Response Fund** (2017) To provide immediate assistance for basic needs and opportunities for men and boys of all ages

**Merriman Family Fund** (2000) To promote environmental and ecological preservation, conservation, education, research and advocacy

**JoAnn & David Mills Family Fund** (2013) To support a variety of charitable organizations primarily in the communities served by the Foundation

**Laura Schlesinger Minor Fund** (2017) To support initiatives identified by the Women & Girls' Fund of the Foundation

**James R. Parker Trust** (transferred in 2002) To meet the needs of residents of the town of Burlington

**Plainville Community Fund** (2006) To provide funding for charitable projects and programs that will enhance the quality of life for Plainville citizens

**Plymouth Century Club Fund** (2006) To provide mini-grants to Plymouth's teachers and other school personnel for creative and innovative instructional practices

**Douglas and Noreen Schumann Special Interest Fund** (1998) To support community programs focused on building self-esteem, confidence and strong values in young people

**Jean Sorey Fund for Single Parent Families** (2015) To provide support to single parents for immediate needs to better their families

**Jay and Elizabeth Tyrrell Fund for the Arts** (2011) To advance artistic and cultural opportunities in the greater Bristol area

**Werner Family Fund** (2000) To provide immediate assistance for basic needs and opportunities for inclusion to families with children facing financial hardship

**Women & Girls' Fund** (2001) To support programs which improve the conditions and opportunities for females in the towns served by the Foundation

**Women & Girls' Immediate Response Fund** (2002) To provide immediate assistance for basic needs and opportunities for women and girls of all ages

## SCHOLARSHIP FUNDS

**These funds enable a donor to establish a named fund for any level of education. Donors may designate a particular school, field of study and select eligibility criteria.**

|   |  |   |  |
|---|--|---|--|
| Christian Arndt Scholarship Fund (2006)                             | Bristol Yale Club Scholarship Fund (1999)                      | Karen Finder Scholarship Fund (2003)                  | Lena M. and Peter L. Korotie Scholarship Fund (1997)       |
| E. Bartlett Barnes Award of Journalism Fund (1999)                  | Burlington Lions Charities Scholarship Fund (2000)             | Carolyn Fisher Scholarship Fund (transferred in 2003) | Vincent T. Kozyrski Scholarship Fund (2010)                |
| Because of 26 Kindness Award Scholarship Fund (2014)                | 4 Burns Scholarship/St. Joseph/St. Paul Fund (2000)            | Olivia Fusco Memorial Art Scholarship Fund (2016)     | Sean Landry Memorial Basketball Scholarship Fund (2008)    |
| Stanley P. Bitel Memorial Fund (2015)                               | Conn Acoustics Scholarship Fund (2006)                         | GE's Industrial Solutions Scholarship Fund (2015)     | Ray Machine Corp./Ray & Darlene Lassy Family Fund (2017)   |
| Sylvia Bodak Memorial Scholarship Fund (2001)                       | Peg Coughlin Nursing Scholarship Fund (2000)                   | Andrew and Murielle Giacomini Scholarship Fund (2003) | John J. and Doris Lazorik Memorial Scholarship Fund (1997) |
| Peter and Marjorie Bossi Educational Fund (2003)                    | Rit Croce Academic and Vocational Scholarship Fund (2014)      | David Greenleaf Academic Achievement Award (2015)     | Leger Initiative for Education Fund (L.I.F.E.) (2005)      |
| Bowerman Scholarship Fund (2008)                                    | Richard A. DellaVecchia Scholarship Fund (transferred in 2002) | Azilda Hebert Music Scholarship Fund (2000)           | Dave Lepore Journalism Scholarship Fund (2003)             |
| Bristol Boys & Girls Club Schulman Fund (2000)                      | Katherine Dobroczyński Memorial Scholarship Fund (2014)        | Grace & Norma Joy Scholarship Fund (2008)             | Thérèse MacCallum "Great Kid" Scholarship Fund (2005)      |
| Bristol Lions Club F. Fred Soliani Memorial Scholarship Fund (2008) | Jeffrey Downes Memorial Scholarship Fund for the Trades (2015) | John Kalinoski Scholarship Fund (transferred in 2004) | Nicholas P. Maglio ACE Fund (2011)                         |
| Bristol Police Scholarship Fund (1999)                              |  | Keating-Monaghan Memorial Scholarship Fund (2008)     | Main Street Community Foundation Scholarship Fund (1997)   |

*continued on next page*



**Bread for Life** was able to provide 25 emergency food boxes to the Southington Police Department that officers on patrol distributed to people in need of food. The emergency boxes were made possible through grants from the Leading Ladies Immediate Response Fund and the Main Street Children's Fund. The boxes contain bottles of water, nutritional shakes, granola bars, gift card to McDonald's, hand wipes and an emergency blanket. There is also information about location, meal times, services provided and contact information for Bread for Life.

|  |   |  |  |
|--|---|--|--|
| Malerbo Memorial Scholarship Fund (2005)                     | Ralph Papazian Memorial Scholarship Fund (2013)                   | Julie A. Roche Nursing Scholarship Fund (2014)             | Jay W. & Elizabeth M. Tyrrell Scholarship Fund (2011)  |
| Elizabeth I. & Louis J. Matt Medical Scholarship Fund (2007) | Estelle Delano Peterson Scholarship Fund (2004)                   | Douglas Roland Aid for the Trades Scholarship Fund (2009)  | Louise (Humphrey) Van Gorder Music Camp Scholarship Fund (2014)                                |
| Robert E. and Angeline P. McCormack Scholarship Fund (2002)  | Dorothy Dewey Picard Music Scholarship Fund (1999)                | Clement J. Roy Scholarship Fund (2012)                     | Dr. Joan T. Wallace Prize for Highest Achievement in English at Southington High School (2014) |
| McMaster-Moulthrop Scholarship Fund (1999)                   | Plymouth Community Club Scholarship Fund (transferred in 2003)    | Saint Matthew School Scholarship Fund (2000)               | Peggy Ann Walsh Memorial Scholarship Fund (2011)   |
| Ken E. Micloskey/Dorothy Micloskey Ives Award Fund (2002)    | Alice C. Pulsifer Memorial Scholarship Fund (transferred in 1997) | Dora Schubert Scholarship Fund (transferred in 2017)       | Kristen Warner Scholarship Fund (2004)   |
| Al and Joan Monico Scholarship Fund (2013)                   | Max and Ruth Rabin Scholarship Fund (2006)                        | Lawrence (Larry) Selza Memorial Scholarship Fund (2010)    | John Whitcomb Scholarship Fund (2001)  |
| NESMA Scholarship Fund (2010)                                | Radcliff Family Education Fund (2002)                             | Glo Sessions Fund for Art Education (2012)                 | Eva Brodowicz Wickwire Volunteer Scholarship Fund (2015)                                       |
| AJR Nocera Memorial Fund (2007)                              | Radcliff Plainville High School Fund (2006)                       | Jill Lynne Shackett Educational Scholarship Fund (2013)    | Yarde Metals Memorial Scholarship Fund (2005)  |
| Anthony Norton Scholarship Fund (2015)                       | Louis J. Rascoe Scholarship Fund (2005)                           | The Southington Observer/StepSaver Scholarship Fund (2005) |  |

**A \$2,000 grant from the Bristol Brass General Grant Fund was awarded to the New Britain Museum of American Art to support the Access to the Arts: Wolcott program. Students toured the Museum galleries and the artist-designed benches before visiting the studio to create their own artful bench.**



## UNRESTRICTED COMMUNITY FUNDS

**These funds are flexible and responsive to emerging and changing community needs. The Foundation distributes grants from these funds where they are needed most.**

|   |   |  |
|---|---|--|
| Wally Barnes Fund for Community Leadership Initiatives (2013) | Formagioni-Lodovico Family Fund (2009)                | Money in Motion Fund (2015)                        |
| Bristol Brass General Grant Fund (1998)                       | Jim & Eleanor Frawley Community Fund (2010)           | Karen and Kim Murphy Family Charitable Fund (2016) |
| Bristol Savings Bank Fund (1996)                              | Gnazzo/Reidy Charitable Fund (2000)                   | Tedesco-Gallant Charitable Fund (2005)             |
| Angela and Al Caruso Family Charitable Fund (2006)            | Main Street Community Foundation Memorial Fund (2008) | Turkus Family Fund (2000)                          |
| Ronald F. and Emilie P. Duhaime Family Fund (2003)            | Edward W. and Audrey K. Mink Memorial Fund (2000)     |  |

## SUSTAINABILITY FUNDS

**Sustainability Funds strengthen the Foundation's role as a funder, community leader, convener and advocate.**

|  |  |
|--|--|
| Barnes Group Inc. 150th Anniversary Fund (2007)        | Dave and Edith Scarritt Fund (2004)        |
| Main Street Community Foundation Endowment Fund (2000) | Yarde Metals Community Support Fund (2005) |



## Burlington Community Fund



### 2017 Burlington Community Fund Advisory Council

Jonathan Schwartz, *Chairman*  
Paul Rochford, *Vice Chairman*  
Janet Schwartz, *Treasurer*  
Jacky Quinn, *Secretary*  
Robert Caiaze  
Sandy Hierl  
Colleen Magnus  
Dawn Markelon  
Ann Mazeau  
Sanford Mazeau  
Mary Peterson  
Pat Small  
Wendell Taylor  
Sam Dorman, *Student Representative*  
Jack Markelon, *Student Representative*  
Allison Rau, *Student Representative*

In 2011, a group of committed community leaders in Burlington came together to create an endowment fund at Main Street Community Foundation to support charitable projects and programs that will enhance the quality of life for the citizens of Burlington, CT. In 2017, \$6,300 was awarded to six local organizations. The Fund has awarded a total of \$20,000 since its founding six years ago, impacting a population of approximately 9,300 citizens.

To see a list of all grants awarded from the Fund, see page 12 of this annual report.

**"Our deepest gratitude to the Burlington Community Fund. Because of their generosity, our troop is many steps closer to our goal of being able to provide the appropriate tents for backpacking to the 50 registered scouts. In addition, funds were also provided to furnish new shelving for our recently purchased trailer. We consider ourselves fortunate to have been the recipient of such kindness." - Michele Deeb & Deb Kleinrock Boy Scouts Troop 23 Committee Co-Chairs**



The Burlington Community Fund, together with the Burlington Parks & Recreation Department, held a Scarecrow Contest to bring residents together while raising funds.

## Make a Mark Region 10 Enrichment Fund



### 2017 Make A Mark Region 10 Enrichment Fund Advisory Committee

Colleen Ververis, *Chairman*  
Bruce Burnett, *Vice Chairman*  
Kelly Fecteau, *Treasurer*  
Stephanie Cowger, *Secretary*  
Heather Carr  
Lori Cizeski  
Art Funk  
Susan Geissler  
Brennan Glasgow  
Megan Mazzei  
Tania McNaboe  
Alan Beitman, *Superintendent of Schools*  
Mike Criss, *Harwinton First Selectman*  
Ted Shafer, *Burlington First Selectman*  
Jack Gedney, *resigned October 2017*  
Dwight Harris, *resigned October 2017*

### Student Representatives

|                |                 |
|----------------|-----------------|
| Nick Benvenuto | Maddy Millerick |
| Sam Buchanan   | Carolyn Nevin   |
| Emma Cabral    | Alex Pelchar    |
| Amanda Fecteau | Charlie Rau     |
| Kiley Hallet   | Josh Schibi     |
| Kevin Kryzwick | Jack Stocker    |
| Riley McNaboe  | Kayleigh Watson |

The permanently endowed Make A Mark Region 10 Enrichment Fund was established in 2009 at Main Street Community Foundation to provide grants for special and creative initiatives that cannot be funded on a meaningful scale through the regular school district's budget. In 2017, the Fund awarded 10 grants, totaling \$6,765.

Since 2009, over \$33,073 in grants have been awarded to teachers, administrators, guidance counselors, school personnel, and students for

programs, projects and educational opportunities, impacting a student population of 3,000.

Donations from individuals, families, and businesses, as well as fundraising events promote a united sense of community among residents from Burlington and Harwinton in support of their shared school district. To see a list of all grants awarded from the Fund, see pages 12-13 of this annual report.



The Boys and Girls Empowerment groups at Lewis S. Mills High School worked on social skill building activities to help build self esteem and to establish positive relationships over an eight week period. As a culminating activity both the boys and girls groups participated in a kayaking excursion followed by a final reflection over lunch.



Harwinton Consolidated School first grade teacher Kelly Pergola received a grant for "Flexible Seating for All", which allows students to choose what they sit on during class. "The flexible seating options have allowed students greater movement which has improved their concentration and ability to focus," said Kelly Pergola.

## Plainville Community Fund



### 2017 Plainville Community Fund Advisory Council

Byron Treado, *Chair*  
 Robyn Poulos, *Vice Co-Chair*  
 Deanna Gelt, *Vice Co-Chair*  
 Carol Stauble, *Secretary*  
 Kenneth Gnazzo, *Treasurer*  
 Helen Bergenty  
 Alice "Dolly" Chamberlin  
 Simonne Corriveau  
 Mary Couture  
 Lynn Davis  
 Val Dumais  
 Robert E. Lee  
 Kelly Perrotti  
 William Petit  
 Richard Piotrowski  
 Andrea Wasley  
 Jim Welch

### Distribution Committee

Deanna Gelt, *Chair*  
 Simone Corriveau  
 Mary Couture  
 Lisa Mandeville  
 Kelly Perrotti  
 Richard Piotrowski  
 Robyn Poulos  
 Carol Stauble

Community members in Plainville scared up a fun event to benefit programs and services of local nonprofit organizations! The 3rd Annual Plainville PumpkinFest raised \$6,000 to make a charitable donation to the Plainville Community Fund, an endowed fund at the Main Street Community Foundation. As a result of the 2017 PumpkinFest and other fundraising initiatives, 10 grants for a total of \$9,000 were awarded to local nonprofits to enhance the lives of Plainville residents. To see a list of all grants awarded in 2017 from the Fund, see page 13 of this annual report.

**"The volunteer effort behind the PumpkinFest is nothing short of amazing. The entire town followed their lead for another wonderfully successful event to benefit the Plainville Community Fund,"** said Byron Treado, Chair of the Plainville Community Fund Advisory Council.

Since 2006, Plainville Community Fund has distributed nearly \$60,000 in grants.



## Men & Boys' Fund



### 2017 Men & Boys' Fund Advisory Committee

Rodger Stotz, *Chair*  
 Whit Betts, *Vice-Chair*  
 Rob Caiaze, *Treasurer*  
 Rob Sanderford, *Secretary*  
 Chris Amorosino  
 Chris Boyle  
 Rich Carmelich  
 Chris Cassin  
 Larry Covino  
 Hal Kilby  
 Steve LePage

### A small step for local men & boys, a big impact on individual lives

In 2016, a few local men shared their mutual concern about the state of men and boys in our society today. Too much violence, misbehavior, school failure, and unfulfilled potential dominated the news. Could local social services and non-profits provide insights on these issues?

Yes, they could and did at meetings held at the Main Street Community Foundation, which resulted in the formation of the Men & Boys' Fund, with the

mission to: *improve the quality of the lives of men and boys, increase their self-sufficiency, and make a positive difference in their community.*

This Fund concluded its first year in 2017 and already is making an impact by providing:

- Transportation support for a student to attend camp
- A new stove for a Transitional Education program
- A rental application fee to secure a man's permanent housing
- Rental assistance for a single father between jobs
- Sports equipment for a high school youth

Also in 2017, two Program grants were funded:

- Bristol Parent & Child Center's Full Circle program to hire a male mentor for a single fathers' parenting program
- Bristol Youth Services' "Skills to Pay the Bills" program – to help young men learn life and independent living skills



A growing group of committed volunteers and an outpouring of community generosity made fulfilling these needs and building an endowment possible.

Looking forward, the Men & Boys' Fund is focused on becoming more visible in our six communities and increasing the ability to provide grants and immediate response funding. We invite you to attend our community briefing meetings and fundraisers – check the Main Street Community Foundation website and Facebook for dates and times.

The Advisory Board of the Men & Boys' Fund is humbled by the communities' support. Together we can assist men and boys to build more productive, self-sufficient, and successful lives.



# Barnes Memorial Trust

## 2017 Bradley Henry Barnes & Leila Upson Barnes Memorial Trust Advisory Committee

William J. Tracy, Jr., *Chair*  
Sherwood Anderson  
Valerie A. DePaolo  
Pamela Higgins  
Mary Ellen Hobson  
Janis L. Neri  
George Skarvinko  
Barry Thompson  
John D. Scarritt, *ex officio*  
Susan D. Sadecki, *ex officio*

"There are many factors that affect the health and well-being of individuals other than the medical care they receive at the hospital or provider's office," stated Susan Sadecki, President & CEO of Main Street Community Foundation. "Local community resources, the workplace, the safety of our surroundings, our food security, and the cohesiveness of our neighborhoods all impact our physical and mental health."

In support of that concept, the Bradley Henry Barnes & Leila Upson Barnes Memorial Trust at the Community Foundation launched a new grant program

in 2017, the **Southington Community Well-Being Grant Initiative**. This pilot program supported nonprofit organizations that are located in Southington and operate programs for the overall well-being and betterment of Southington residents.

"This initiative attracted new, local applicants that are making a difference in the community," stated Susan Sadecki. "We continue to strive to make Southington the healthiest community through the work of the Barnes Memorial Trust."

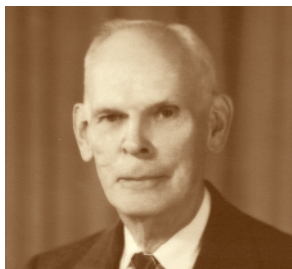
Grants totaling **\$88,750** were awarded through the **Southington Community Well-Being Grant Initiative** and included:

- **\$23,150** to the Early Childhood Collaborative of Southington (ECCS) – Five educational initiatives within the ECCS community to improve the well-being of Southington's young children.
- **\$25,600** to LISA, Inc. (Living in Safe Alternatives) – A partnership with the Southington Youth Services Bureau and the STEPS Coalition to offer a comprehensive array of supports to reduce substance use in Southington teens.

- **\$40,000** to the United Way of Southington – A collaboration with Senior Transportation Services of New Britain to enhance transportation services for Southington seniors through the provision of additional rides at no cost to Southington residents.

Additionally, 10 programmatic and capital grants totaling **\$635,261** were awarded from the Barnes Memorial Trust in 2017; the full list can be viewed on page 12 of this Annual Report. The grants fall within one of the following community-identified health and health care areas: Accessibility and affordability of health care; substance abuse prevention and mental health needs; health care for an aging population; better integrated health care delivery; and education about existing services. These needs were identified in a 2013 study commissioned by Main Street Community Foundation and they have become the cornerstone of the Barnes Memorial Trust's grantmaking strategy.

Although he passed away in 1973, Bradley Barnes continues to impact Southington and improve the health of all residents through his legacy – the Bradley Henry Barnes and Leila Upson Barnes Memorial Trust.



Bradley Barnes



Leila Barnes

ECCS members and the Family Resource Center marched in the Southington Apple Harvest Festival parade to promote car seat safety and the new car seat law.





## Women & Girls' Fund



### 2017 Women & Girls' Fund Advisory Board

Dawn Nielsen, *Chair*  
 Julia Weston, *Vice Chair*  
 Lisa Palen, *Treasurer*  
 Susan Moreau, *Recording Secretary*  
 Jeanine Audette, *Past Chair*  
 Cathryn Addy, *Member-at-Large*  
 Sofia Bayne  
 Catherine Cassin  
 Angela Chapman  
 Patti Fippinger  
 Valerie Furey  
 Kaitlin Humble  
 Kimberly Lewis  
 Ursula Sowinski  
 Sharon Stotz  
 Jarre B. Betts, *ex officio*

The Women & Girls' Fund's **Annual Meeting & Grantee Reception** gathered 70 donors, community members and Fund representatives together to award 14 organizations serving women and girls in Bristol, Burlington, Plainville, Plymouth, Southington and Wolcott a record \$51,111 in grants in 2017. The event celebrated the grantee organizations and all the ways we partner together to make it possible for local women and girls to improve the quality of their lives.



In addition to the program grants the Women & Girls' Fund awarded in 2017, the Fund also awarded a \$2,000 grant to the **Connecticut Women's Education and Legal Fund** to support the Connecticut Collective for Women & Girls (CCWG). The CCWG is a community of organizations committed to the advancement of women and girls in the state of Connecticut and is guided by principles of gender equity, racial justice,

LGBTQIA rights, civil rights, disability rights, ending and preventing violence, economic justice, reproductive rights and immigrants' rights. As a member of CCWG, the Women & Girls' Fund and other organizations will help each other build on the important work that is already being done, in a supportive and collaborative space that boosts each member organization's efficiency within their own organization and power as a collective.



The 16th annual **Wonder of Women (WOW)** event was held on April 25, 2017. Proceeds from the WOW event support the Fund's annual grantmaking, and over 400 people attended the event to support the Women & Girls' Fund's mission to improve the conditions and opportunities for women and girls in our communities. The event featured

nationally recognized chef and winner of the Food Network Show "Chopped" Silvia Baldini as the guest speaker. Her hilarious and personable talk left everyone energized and inspired. The evening then ended with an incredibly competitive and exciting live auction auctioneered by WTNH News 8 Anchor Anne Craig.



Every summer, the Women & Girls' Fund holds an **informational luncheon** with local nonprofit volunteers, staff and board members. The luncheon features:

- A review of the Women & Girls' Fund grant application, including the Fund's distribution objectives and how to submit a competitive proposal using the new Online Grants Center.
- An update from the 2016 Women & Girls' Fund grantees on the programs that were funded and the impact they have had.
- A discussion of critical needs and issues impacting women and girls in the local community.

# FRIENDS OF THE FOUNDATION

We gratefully acknowledge the **Friends of Main Street** listed on this page that generously supported our **2017** annual appeal. This annual campaign, overseen by past board member and founder Tom Barnes, provides necessary administrative financial support to advance the charitable activities of the Foundation to better serve your communities.



Annually, a reception is held to acknowledge the Foundation's many donors and volunteers, especially those who support the annual Friends Appeal and believe in the importance of local philanthropy. In 2017, the reception was hosted at **Southington Community Cultural Arts (SoCCA)**. Attendees enjoyed all SoCCA has to offer, including dozens of paintings, sculptures, pottery, textiles and abstract pieces. Friends enjoyed catered delicacies by Anthony Jack's Restaurant as they strolled the venue.

Special appreciation goes out to Dawn Nielsen for designing the invitation; and Garrett Printing & Graphics for their donation of printing. Sincere gratitude goes out to SoCCA, Executive Director Mary DeCroke, and especially the staff and volunteers who guided attendees in hands-on art activities, such as weaving, to create a memorable experience for everyone in attendance.

Many thanks to all who support our annual friends appeal and to all donors who value the work of the Foundation. You can be proud of the comprehensive center for leadership and philanthropy you have created and helped to sustain for the benefit of your local communities both now and forever.

## INDIVIDUAL FRIENDS

Anonymous  
James and Denise Albert  
Richard and Barbara Alden  
Doris Aldieri  
Lois Allaire  
Donna and Kylie Ayer  
Elizabeth Barnes  
Wallace Barnes and Barbara Hackman Franklin  
Kurt and Jean Barwis  
BBK - Bob Alim, Bob Boudreau, Kevin Prior  
Kenneth and Mary Benoit  
Jarre and Whit Betts  
Victoria Biondi  
C. David and Judith Bomar  
Gary Boukus  
Marie and Kenneth Bowes  
Nancy Brault  
Peter and Trudy Brown  
Olga Callender  
Thomas and Allison Calvello  
Richard Caporaso  
Danny and Christine Carrier  
Catherine and Christopher Cassin  
Rosemarie Cassin  
Patricia Chapman  
Irene and Leonide Charette  
John and Nancy Chiero  
Ammann Ciccirelli and Valerie Vitale  
Raymond and Dorothy Ciechoski  
Richard and Elaine Couture  
George and Patricia Crowley  
Peter and Susan D'Addario  
Bruce and Yanina Daigle  
Barbara and Timothy Denehy  
Joseph and Amy DiFazio  
Theodore and Diane Donovan  
Robert and Theodora Douglas

Michael Dube and Karen Samul  
Roland Dumont  
Richard and Sue Dziura  
Diane and James Eitvydas  
Richard and Marilyn Fetzer  
Robert and Carolyn Fiondella  
Virginia and Geoff Fitzgerald  
Timothy and Valerie Furey  
Timothy Gamache  
Donald and Margaret Goranson  
John and Barbara Greenlaw  
Bruce and Kristin Guillemette  
Wilma and Dennis Hart  
Francesca Heap  
Betty and Kenneth Hintz  
Maryellen Holden  
Rita Joy  
Dennis and Mary Keenan  
Barbara Keiffer  
Harold Kilby  
David and Lisa King  
Jay Kolakoski  
Edward Krawiecki  
Ercole and Pamela Labadia  
Michael Lambert  
Elizabeth and Fergus Lane  
Thomas and Geraldine LaPorte  
Steven and Donna Lasewicz  
Louise Lauretano DeMars  
Morris and Patricia Laviero  
John and Sandra Leone  
John and Barbara Letizia  
Lawrence and Eileen Linnetz  
Bonnie and John Lodovico  
Harold and Phoebe Lorenson  
Laura Maglio  
Julie and Patrick Matthews  
Sanford and Ann Mazeau  
Angie McCormack  
Richard and Patricia Miller  
Townsend Mink

Craig and Laura Minor  
Victor and Kathleen Mitchell  
Lea Mola  
Susan and Mark Moreau  
Kim Murphy  
Frances Nadeau  
Elliott and Patricia Nelson  
Thomas and Marie O'Brien  
Sally and Terry O'Connor  
James and Mary-Etta Potter  
James and Ann Pryor  
Betty Radcliff  
Jerald and Carroll Rafaniello  
Samantha Rajotte  
Barbara Retartha  
John and Mary Ellen Riback  
Ezra Ripple  
Jeanne and Gary Roberge  
Ralph and Linda Roland  
James and Kathleen Sayre  
Daniel Scoppetta  
Mark and Maryann Seaman  
Carl and Sharon Sellberg  
Abraham and Cipah Shapiro  
Mark Smaldone and Patricia Bechard Smaldone  
Raymond Smialowski  
Daniel and Jessie Smiley  
Murdo and Patricia Smith  
Maureen Sonstrom  
Donna Storms  
Sharon and Rodger Stotz  
Ruth Timme  
Ann Tracy  
William Veits  
Arthur and Patricia Ward  
Marion Whitcomb  
Robert and Janet Williamson  
Mark and Lorna Zammett  
David and Stephanie Zomick

## FOUNDERS, DIRECTORS AND PAST DIRECTORS FRIENDS

David and Kristen Aldieri  
Sherwood and Kate Anderson  
Thomas and Melanie Barnes  
Mark and Nancy Blum  
Bryan Bowerman  
Michael and Susan Brault  
Todd Burton  
Robert and Rebecca Caiaze  
Alice Chamberlin  
Dennis and Eileen Cleary  
Daniel and Sally Daigle  
Kristine and Peter Dargenio  
Valerie DePaolo and Michele Boisvert  
Val and Susan Dumais  
Cheryl Dumont-Smith and Edward Smith  
Patricia and William Dunn  
David England  
Terry and Marguerite Fletcher  
Scott and Karen Fournier  
Arthur and Lillian Funk  
Charles and Rosamond Glendon  
Anita and William Hamzy  
Mary Ellen Hobson  
Kimberly James  
Richard and Kim Larkin  
John and Barbara Letizia  
Edward Lorenson  
Diane and Raymond Macklosky  
Mark Malley  
Jacqueline and David Merchant  
William R. Micari  
Janis Neri  
Mark and Monique Peterson  
Bonzena Pina  
Robyn and Dale Poulos  
David Preleski  
Jeanne Radcliff

Kathryn and Edward Reinhard  
Susan and Ronald Sadecki  
John and Susan Scarritt  
Jennifer Scully  
Susan and Skip Scully  
John and Mary Smith  
William and Kim Tracy  
Byron and Debra Treado

## CORPORATE/ORGANIZATION FRIENDS

Barnes Group Foundation, Inc.  
Harry F. Barnes & Carol H. Barnes Family Foundation  
Bradley, Foster & Sargent, Inc.  
Bristol Recovery Club Inc.  
C & H Electric, Inc.  
C.V. Mason & Co., Inc.  
Connecticut Lighting Center, Inc.  
Country Manor Realty, Inc.  
Crescent Manufacturing Operating Co.  
DACRUZ Manufacturing  
Harvest Bakery, Inc.  
New England Spring & Metalstamping Association  
Riverside Investment Services LLC  
Scott Funeral Home, Inc.  
Sky Bight Foundation, Inc.  
Smile Center  
Terry Enterprises, LLC  
Terryville Lions Club  
Tollman Spring Co., Inc.  
U.S. Trust Bank of America Private Wealth Management  
Webster Bank  
William and Thomas Delfino, LLC  
Wolcott Crossroads, Inc.  
Wollenberg's, Inc.  
Yarde Metals, Inc.



## GIFTS RECEIVED IN 2017

We gratefully acknowledge the support of our donors and thank them for their gifts during the 2017 calendar year. If we have inadvertently failed to note your contribution, please let us know so that we may acknowledge it in a future publication.

### A

Anonymous  
Robin and Joseph Adamo  
Joe and Pamela Adams  
Cathryn Addy  
Aetna Foundation, Inc.  
Aetna Inc.  
Denise and James Albert  
Justin and McKinley Albert  
Richard and Barbara Alden  
David and Kristen Aldieri  
Doris Aldieri  
Lois Allaire  
Stephen Allaire and  
Mary Ruth Connolly  
AmazonSmile Foundation  
Margaret and Chris Ambrose  
Chris and Mari Amorosino  
Anne and David Ancher  
Sherwood and Kate Anderson  
Donna Aregood  
Mary Art and Francis Mann  
Denise Atkinson  
Mary J. Atwood Trust  
Alan and Elizabeth Aubin  
Jeanine and Michael Audette  
John and Kathleen Audette  
AXA Foundation  
Donna and Kylie Ayer

### B

James and Donna Baccei  
Doris Bachand  
Silvia Baldini  
Elizabeth Barnes  
Fuller and Janis Barnes  
Thomas and Emily Barnes  
Thomas and Melanie Barnes  
Wallace Barnes and Barbara  
Hackman Franklin  
Harry F. Barnes & Carol H. Barnes  
Family Foundation  
Tom and Melanie Barnes Family  
Fund at Main Street  
Community Foundation  
Barnes Group Foundation, Inc.  
Daniel Barresi  
Barbara and David Barton  
Kevin and Michelle Bartucca  
Kurt and Jean Barwis  
Sia and Charles Bauer  
Patricia and William Bayne  
Sofia and Scott Bayne  
BBK - Bob Alim, Bob Boudreau,  
Kevin Prior  
Ann Beardsley  
Arthur Becker  
Joel and Nancy Becker  
Richard Becker  
Diana and Derek Beere  
Benevity Community Impact  
Fund, a fund of American  
Endowment Foundation  
Kenneth and Mary Benoit  
Debra-Lynn and Dan Benvenuto  
Judith Benvenuto  
Leonard and Doris Berton  
Jarre and Whit Betts  
Betts Family Fund at Main Street  
Community Foundation  
Mark Bianchi  
Big Sky Fitness

Victoria Rose Biondi, MD &  
Associates/Briar Rosa  
Merritt and Judith Bird  
Lucille Bissonette  
Charles and Carol Blanchette  
Mark and Nancy Blum  
Blum Shapiro & Company, PC  
John and Michele Boccalatte  
C. David and Judith Bomar  
Brittany Booth and Jay Cornelio  
Patricia Boudreau  
Steven and Ann Boudreau  
Gary Boukus  
Bertrand and Doris Bouvier  
Bryan Bowerman  
Marie and Kenneth Bowes  
Robert and Brigitte Boyce  
Boys & Girls Club of Bristol  
Family Center  
Bradley, Foster & Sargent, Inc.  
Nancy Brault  
Susan and Michael Brault  
Bread for Life  
Amy Breakstone  
Brennan Pools, Inc.  
Paul and Barbara Brewer  
William and Ellen Bridgman  
Brilliant Design  
Bristol 99 Restaurant  
Bristol Adult Resource Center, Inc.  
Bristol Hospital  
Bristol Instrument Gears, Inc.  
Bristol Lions Club  
Bristol Pediatric Center  
Bristol Recovery Club Inc.  
Bristol Yale Club  
Judith Brown

Peter and Trudy Brown  
Richard Brown  
Janice and John Bruetsch  
Carol Brunalli  
Gary M. Buchanan  
Memorial Fund  
Town of Burlington 5K Run/Walk  
Burlington Connecticut  
Lions Club  
Burlington Land Trust, Inc.  
Gerry and Barbara Burns  
Todd Burton  
William Butler

### C

C & H Electric, Inc.  
C.V. Mason & Co., Inc.  
Joseph and Carolyn Caggiano  
Rebecca and Robert Caiaze  
Caiaze Family Charitable Fund  
at Main Street Community  
Foundation  
Anthony and Amy Calabrese  
JoAnn and Robert Calcinari  
Olga Callender  
Joe & Kay Calvanese Foundation  
Thomas and Allison Calvello  
Can Do Cleaning LLC  
Richard Caporaso  
Margarida Carbonell  
Richard Carlson  
Elaine and Richard Carmelich  
Kimberly and Richard Carmelich  
Danny and Christine Carrier  
Frank and Diane Casarella  
Karen and Steven Casey

Kerry Casey  
Catherine and Christopher Cassin  
Rosemarie Cassin  
Daniel and Elizabeth Cassina  
Pamela Castonguay  
CCOG Women's Health Group  
Louis and Theresa Cercone  
David Ceruti  
Alice Chamberlin  
Patricia Chapman  
Irene and Leonide Charette  
Francis Chiaramonte  
John and Nancy Chiero  
Gale and Thomas Chizinski  
Armann Ciccirelli and  
Valerie Vitale  
Donna and Mauro Ciccirelli  
Raymond and Dorothy Ciechoski  
Michael and Tamblyn Ciquera  
Dorothy Cistulli  
City Hardware, Inc.  
Clarion North America, Inc.  
Clean Earth, Inc.  
Dennis and Eileen Cleary  
Sondra and Anton Clement  
James and Edna Cleveland  
David and Donna Clout  
Joan and Donald Cloutier  
Karen Coco  
Krista Coletti  
Conn Acoustics Inc.  
Connecticut Lighting Center, Inc.  
Connecticut Science Center  
Carol Corliss  
Alycia and Joann Corr  
Nicholas Corr  
Presentacion Coughlin

This is Sasha and she was helped with a grant made to the  
**Ferret Association of CT** for medical care of senior ferrets from  
the Elizabeth I. and Louis J. Matt Animal Protection Fund.







Emma is a member of **Southington Community Cultural Arts' All Access program**, which provides art sessions, taught by professional art instructors, to adults with intellectual disabilities. All Access's diverse curriculum includes fine art, fabric, surface design and collage and is designed to connect individuals with their community, provide creative skills training, produce meaningful income and most importantly enhance quality of life through the creative process. Here Emma is creating hand woven fabric on the loom, which will be turned into placemats, table runners and handbags. This program was supported with a \$100,000 grant from the **Bradley Henry Barnes and Leila Upson Barnes Memorial Trust**.

Country Gardens of Bristol, Inc.  
Country Manor Realty, Inc.  
Richard and Elaine Couture  
Lawrence and Karen Covino  
Robin and Stephen Cowdell  
Stephanie and Dean Cowger  
Crescent Manufacturing  
Operating Co.  
Gary Crisanti  
George and Patricia Crowley  
Kathy and Fred Cunliffe

**D**

DACRUZ Manufacturing  
Peter and Susan D'Addario  
Bruce and Yanina Daigle  
Daniel and Sally Daigle  
Mark Dalke  
Kim and Michael Daly  
D'Amato Construction Co., Inc.  
Susan Dantino  
Kristine and Peter Dargenio  
Kaye and Ken Davis  
Nancy Dayton  
Noreen Dee  
Michele and John Deeb  
Phyllis and Peter Del Mastro  
William and Thomas Delfino, LLC  
Paul Della Bianca  
Linda DeLuca  
Joseph and Josephine DeMaio  
Elizabeth Demeyer  
Barbara and Timothy Denehy  
Carol Denehy  
Nancy Denehy  
Valerie DePaolo and  
Michele Boisvert  
DePaolo Family Foundation, Inc.  
Robert and Cheryl DeSantis  
Designs by Ashley B.  
Rita Dewyea  
Karen Diamantes

Craig Diangelo  
Deborah Dickens  
Joseph and Amy DiFazio  
George Dion  
Mark and Annsue DiVenere  
T. Denise Dobek  
Theodore and Diane Donovan  
DoubleTree by Hilton  
Hotel Bristol  
Robert and Theodora Douglas  
Nicole and Justin Downes  
Frederick Downs  
Penny and Steve Driggers  
Michael Dube and Karen Samul  
Marie Dudley  
Emilie and Ronald Duhaime  
Susan and Val Dumais  
Roland Dumont  
Cheryl Dumont-Smith and  
Edward Smith  
Douglas and Alison Dunmore  
Patricia and William Dunn  
Pattie & Bill Dunn Family  
Charitable Fund at Main  
Street Community Foundation  
Dupont Funeral Home  
Richard and Sue Dziura

**E**

Diane and James Eitvydas  
Eli Terry Jr. Middle School  
Victoria Elliot and  
Marvin McMillen  
Rita Elliott  
Marianne Ellis  
Joanne and David Ellsworth  
Terry Engel and Starlet Snell  
David England  
Linda Estabrook  
John and Dan Evans  
Michael and Bethann Evans

**F**

Donna Fanelli and Thomas Liedke  
James Fanelli  
Farmington Bank  
Camilla Farrell  
John and Virginia Fasolo  
Thomas and Doreen Fasolo  
Roger and Kathleen Fekete  
Richard and Marilyn Fetzer  
Fiondella Fund at Main Street  
Community Foundation  
Patti and Dennis Fippinger  
First Congregational Church  
Men's Fellowship  
Virginia and Geoff Fitzgerald  
Terry and Marguerite Fletcher  
Teresa and Dennis Foley  
Todd Fontanella and John Kemper  
Thomas and Melinda Forella  
David and Mary Fortier  
Gregory Fortier  
Scott and Karen Fournier  
Fourslide Spring and Stamping, Inc.  
Arthur and Lillian Funk  
Funk Funeral Home  
Timothy and Valerie Furey  
Furey Family Charitable Fund  
at Main Street Community  
Foundation  
Johanna and Michael Furgalack

**G**

Timothy Gamache  
Robert Garay  
Donna and Peter Gaski  
Jack Gedney and Kerry Brash  
GEMCO Manufacturing Co., Inc.  
General Reinsurance Corporation  
Patricia Gilbertson and  
Carol Bengson

Rand Sean and Michele Gingery  
Sanita Gingras  
Girl Scouts of Connecticut  
Charles and Rosamond Glendon  
Max and Sam Gorack  
Walter and Jeanette Gorack  
Donald and Margaret Goranson  
Scott Gossman  
Ruth Ann and Harland Graime  
William Caspar Graustein  
Memorial Fund  
Ronald and Fonda Green  
Green Acres Farm  
John and Barbara Greenlaw  
David Greenleaf  
Frank and Hughette Gress  
William and Barbara Grindal  
Christine Griswold  
Bruce and Kristin Guillemette

**H**

Hair I Am  
Hamel Paint & Paper  
William and Anita Hamzy  
Jill Hanson  
Harry S. Fisher Elementary School  
Wilma and Dennis Hart  
Hartford Stage Company  
Harvest Bakery, Inc.  
Hawk's Landing Country Club  
The Healing Corner  
Francesca Heap  
Sarah Heap Crosby  
Joan Hedquist  
Holly and Russell Herold  
Patricia and Richard Hill  
Kenneth Hintz  
Mary Ellen Hobson  
Jeffrey and Jennifer Hogan  
Maryellen Holden  
Home Depot

Home Depot Charity  
Program Trust  
P. Andrew Hottell  
John Howard  
Robert Huckins  
William Huff  
Ryan and Kaitlin Humble  
Lois Hunt  
Jacqueline and Martin Hurwitz

**I**

Imperial Sovereign Court of  
All CT, Inc.  
Georgette Ingellis  
Laurie Irish  
Irongate Insurance Counselors

**J**

Ned Jacobson  
Kimberly and Hopeton James  
Tina Janezic  
Lisa Jaspersohn  
Nancy Jewett  
John and Marion Johnsen  
Lisa Johnson and Bruce Zeh  
Mark Johnson  
Frank and Catharine Joslyn  
Rita Joy  
Jeremy and Irene Joyell  
Christine and Kenneth Julian

**K**

Phoebe Kaczypenski  
Doria Kalt  
Kathi Sorey Associates  
Victoria Kaye  
KC Dubliner  
Patrick and Kathleen Keegan  
Dennis and Mary Keenan

# The future depends on what we do in the present.

Mahatma Gandhi

Barbara Keiffer  
Sheila and Peter Kelley  
David and Tammy Kelly  
Elizabeth Kenna  
Kathleen and Kevin Kerchaert  
Harold Kilby  
Bryan and Carrie King  
Lisa and David King  
Joan and Warren Kirschner  
John and Margaret Kirschner  
Molly and James Kirschner  
Leslie and Sally Kish  
Cynthia and Andrew Klimkoski  
Stacy and Russell Knisel  
M. Hollis Kobayashi  
Jay Kolakoski  
Robert and Linda Kowalski  
KPMG LLP  
Thomas and Rosemary Kraft  
Darlene Krammer  
Keith and Carrie Kranz  
Atty. Edward C. Krawiecki Jr.  
Mike Krenicki  
Cheryl Krompegal  
David and Jodi Kryzanski  
Michael Kuczkowski and  
Deb Breines  
Joanne Kurnik  
David Kushlan

## L

Ercole and Pamela Labadia  
Robert and Jerilyn Labas  
Richard Lacey  
Wilmar and Joan Lagasse  
Mary Jo Laliberte and  
Holly Deaton  
Michael Lambert  
Raymond and Barbara Lambert  
John and Rosemary Lamberty  
Diane Lamberty Jakosz  
Landmark Community Theatre at  
the Thomaston Opera House  
Elizabeth and Fergus Lane  
Richard and Jocelyn Lanpher

Christopher and Leah LaPlaca  
Thomas and Geraldine LaPorte  
Jacqueline Laramée  
Kim and Richard Larkin  
Steven and Donna Lasewicz  
Estate of Richard J. Lass  
Raymond G. Lassy Family Trust  
Louise Lauretano DeMars  
Judi Ann and James Lausier  
Georgette Lauzier  
Morris and Patricia Laviero  
Pamela and David Lazaroski  
Donna Lazorik and Gail Zacharias  
John Lazorik  
Leading Ladies  
Robert E. Lee  
Dawn Leger  
John & Sandra Leone Family  
Charitable Fund at Main  
Street Community Foundation  
Rosemary Lepore and  
Gregory Szyzkowski  
Geraldine and Charles Letizia  
John and Barbara Letizia  
Mona Levesque and  
Paula Blethen  
Stephen and Kimberly Lewis  
Timothy Lewis  
Lawrence and Eileen Linnetz  
Alfred Lodovico and  
Geraldine Argentina  
Anthony and Judith Lodovico  
Anthony and Kimberly Lodovico  
Ashley Lodovico  
Bonnie and John Lodovico  
Michael Lodovico and  
Wendy Goodwin  
Nicholas and Mia Lodovico  
Douglas Lord  
Edward and Laura Lorenson  
Harold and Phoebe Lorenson  
Marjorie and Roger Loucks  
Robert and Clara Lozier  
Cynthia Lucenti  
Lisa Lutton  
Tara Lynn

## M

M.A.B. Designs  
Susan MacArthur  
Britt MacKenzie  
Diane and Raymond Macklosky  
Anne and Joseph Maggipinto  
Laura Maglio  
Colleen and Robert Magnus  
Kathryn and Mark Malley  
Dale Malvezzi  
Manafort Family Foundation  
Lexie Mangum  
James and Assunta Manware  
Frederick and Patricia Markowich  
Daniel and Sandi Marseglia  
James Mascherino  
Masotti Electric, LLC  
MassMutual Financial Group  
John and Sharon Mattas  
Julie and Patrick Matthews  
Nancy and Anthony Mattioli  
Kathryn and Joseph Mauriello  
Sanford and Ann Mazeau  
Joyce and Bernard McAloon  
Lori McCann  
David and Mary Ann McCarthy  
Kevin and Jacqueline McCauley  
Angie McCormack  
Robert and Donna McHugh  
Donald McIntyre  
AnnaMaria McKinzie  
Tania and Brian McNaboe  
Joshua Medeiros  
Melfi Cleaning & Organizing  
Michele Meligonis-DeJohn  
Paul and Karen Melnick  
James Melzen and  
Mark Humphrey  
Jacqueline and David Merchant  
R. David and Marilyn Methe  
Metro Bis  
Micari Financial Group, LLC  
Roger Michele  
Clemence Miecznikowski  
Daniel Mike

Julie Mike  
Edward Miller  
Richard and Patricia Miller  
William and Beverly Miller  
David Mills  
Nancy and Eugene Minella  
Townsend Mink  
Craig and Laura Minor  
Victor and Kathleen Mitchell  
Modern Mechanical Systems, Inc  
Lea Mola  
Kendra Morales  
Ellen Mordas  
Cheryl and William Moreau  
Susan and Mark Moreau  
Kathy Morrison  
Thomas and Barbara Morrow  
Cecilia and Domingos Mourao  
Kim Murphy  
Moira and John Myers  
Mystic Seaport

## N

Frances Nadeau  
Kenneth and Patricia Naime  
Elliot and Patricia Nelson  
Kathleen Nelson  
Janis Neri  
New England Spring &  
Metalstamping Association  
Michael and Colleen Nicastro  
Dawn and Eric Nielsen  
Cassandra Niemczyk  
Dent and Alicia Niggemeyer  
Dolores and Patsy Nocera  
Joline and James Nocera  
Jack and Terry Norton  
The Nutmeg Spice Company

## O

Susan and Richard O'Brien  
Thomas and Marie O'Brien  
Sally and Terry O'Connor  
Gordon Oliver

Jamie O'Meara and  
Cory Cartwright  
One Fifty Central LLC  
Brennan and Kathryn Orié  
Carol and James Orié  
Michael and Rachel Orié  
Nathan Orié  
Jennifer Ostman  
Michael and Cheryl Owsianko

## P

Palace Theater  
Preksha Palmer  
Dr. Glen M. Palmisano  
Charles Patenaude  
Pamela Patterson  
Mirela Pavic Weeks  
The Pediatric Care Center  
James Pelletier  
Steven and Katie Pepe  
Dominic and Cynthia Perno  
Steven Perruccio  
Lynne Peters  
Edwin and Nancy Peterson  
Jeremy and Aeja Peterson  
Marguerite Peterson  
Mark and Monique Peterson  
Tara Peterson  
William and Barbara Petit  
Petit Family Foundation  
Mary-Alice Petrucelli Timek  
Elizabeth Phelan  
Bobby and Mattie Pierce  
Byron Pierce  
Susan Pierce  
Deborah Pieri  
Rhonda and John Pilkington  
Bonzena Pina  
Francis Piscitello and  
Jeanne Picklesimer  
Plainville Community Fund  
at Main Street Community  
Foundation  
Plainville General Electric Fund  
Plainville Optical

Plainville PumpkinFest  
 Rene and Therese Poirier  
 Tim and Lynn Poloski  
 Deborah and John Porrini  
 Julie and Caleb Portfolio  
 Michael and Vivian Positano  
 James and Mary-Etta Potter  
 Sharon Poupart  
 Roger and Virginia Powell  
 Preleski for Council  
 Premier Limousine  
 John Prior  
 James and Ann Pryor  
 Donna Ptak  
 Erin and Charles Putnam

**Q**  
 Quinoco Inc.

**R**  
 Betty Radcliff  
 Jeanne Radcliff  
 Radcliff Wire, Inc.  
 Kathleen Radcliffe  
 Jerald and Carroll Rafaniello  
 Samantha Rajotte  
 James Randles and  
 Maryann Ceneviva-Randles  
 Louis and Lynn Rascoe  
 Dana and Christopher Rau

Raymond James  
 Regional School District #10  
 Kathryn and Edward Reinhard  
 Barbara Retartha  
 Mark and Cristy Rewenko  
 Trevor Reynolds  
 John and Mary Ellen Riback  
 Joanne and Donald Riccio  
 Linda and Richard Rich  
 Janet Riemer  
 Patrick Ringrose  
 Mary Ripley  
 Ezra Ripple  
 Mike and Diane Rivers  
 Riverside Investment Services LLC  
 Doran and Ellen Robbins

Jeanne and Gary Roberge  
 Paul and Jodi Rochford  
 Susan Roesch  
 Ralph and Linda Roland  
 Roland Dumont Agency  
 Dominick and Ada Rossi  
 Rowley Spring & Stamping  
 Corporation Scholarship Fund  
 Nancy Roy  
 Elizabeth Ryan

**S**  
 Susan and Ronald Sadecki  
 Mary Ellen Salanger  
 Joseph and Lois Salvatore

Leslie Sanchez  
 Robert and Janice Sanderford  
 Michael and Nancy Santorso  
 Savers  
 Mary Savino and Melissa Cabiya  
 James and Kathleen Sayre  
 John and Susan Scarritt  
 John-David Scarritt  
 Estate of Dora Schubert  
 Daniel Scoppetta  
 Scott Funeral Home, Inc.  
 Scully Travel LLC  
 Jennifer Scully  
 Susan and Francis Scully  
 Securites Litigation Distribution  
 Maryann Seleman



**Bob and I have lived in  
 Bristol all our married life.  
 We had owned Beacon  
 Prescriptions on South  
 Street for 32 years.**

The **Bob & Pat Wollenberg Charitable Fund** was established in 2017 by Bob and Pat Wollenberg with a gift of mutual fund shares. This donor advised fund will benefit many nonprofit organizations and may include the future establishment of a scholarship fund for **special education** as well as designated funds for their favorite charities.

"Bob and I have lived in Bristol all our married life. We had owned Beacon Prescriptions on South Street for 32 years. The Bristol community has always been very supportive of our business. We would like to give back by supporting local organizations and programs through grants from the fund," said Pat.

The Wollenbergs' philanthropic interests are rooted in personal experience. An autistic family member and Pat's involvement in education have carved a special place in their hearts for adults and children who are challenged intellectually, emotionally, or physically. "We would like to help by funding programs and opportunities designed to meet their needs," Pat stated.

"We have always enjoyed the cultural aspect of living in Bristol," she shared.

Pat and Bob have enjoyed attending **local arts opportunities** – community concerts, theater, and other performing and visual arts experiences. "Our children were also involved in performance arts throughout their school years and beyond." At a time when funding is often reduced or eliminated in state and municipal efforts to balance budgets, the philanthropic contributions made by donors are often essential to the growth or survival of programming in the Arts.

Donor advised funds are a great vehicle for donors who wish to actively participate in the grant making process. Donors recommend grants to charitable projects or organizations they want to support, with oversight provided by the Main Street Community Foundation's Board of Directors. The donor may receive recognition of the grant awards or remain anonymous. Foundation staff members are always available to assist donors by researching grant requests and connecting donors with potential grant recipients. If you would like more information, or are interested in establishing a donor advised fund, please visit [www.mainstreetfoundation.org](http://www.mainstreetfoundation.org) or call us at 860.583.6363.



## Our ambitions are bold and so must be our desire to change and **evolve** our culture.

Satya Nadella

Carl and Sharon Sellberg  
Barbara Sergio  
Donna Sethness  
Donna Shackett and Tim Cornelio  
Julie Shackett  
Thomas Shackett  
Todd and Tracy Shackett  
Amy Shackett Curtiss and Jay Curtiss  
Theodore Shafer  
Cynthia Shahan  
Shannon's Diamonds & Fine Jewelry, Inc.  
Abraham and Cipah Shapiro  
Steven and Pam Simonds  
Elizabeth Singer  
Lee Sinkwich  
George Skarvinko and Susan Contri  
Janet and John Skovran  
Sky Bight Foundation, Inc.  
Mark Smaldone and Patricia Bechard Smaldone  
Raymond Smialowski  
Daniel and Jessie Smiley  
Dianne and Ron Smith  
John and Mary Smith  
Mary Smith  
Murdo and Patricia Smith  
Oliver Smith  
Anita and William Smyth  
Maureen Sonstrom  
Marc and Kiera Soucy  
Ursula Sowinski  
Clark and Cheryl Spencer  
Bette Spero

Matthew and Elaine Sportelli  
John and Tricia Stavens  
Lorna Sterling  
Karen Stevens  
Erika Stinson  
Richard and Jayne Stocker  
The Stocker Foundation  
Don and Judy Stoltz  
Donna Storms  
William and Angela Stortz  
Allison Stotz and Scott Juzwik  
Sharon and Rodger Stotz  
John and Melissa Stubbs  
Studio 466 LLC  
Linda and William Swanson  
William and Margaret Sweet  
Joseph and Marion Szabo

**T**

Norman and Emily Tailion  
Bill and Lois Tank  
Stacey and Trevor Tank  
Deidre and Frank Tavera  
John E. Tavera Memorial Fund  
TD Bank  
Kathleen Temple  
Terry Enterprises, LLC  
Terryville High School  
Terryville Lions Club  
The Hospital of Central Connecticut  
Thomaston Savings Bank  
Gerald and Patricia Thompson  
Scott and Lori Thompson  
Thrivent Financial - Thrivent Choice

Ruth Timme  
Tollman Spring Co., Inc.  
Gerald and Marsha Tomlinson  
Linda and Paul Tonon  
Torrington Savings Bank  
Ann Tracy  
William and Kim Tracy  
Tracy Driscoll Insurance & Financial Services  
Trader Joe's of West Hartford  
Byron and Debra Treado  
TRUIST  
Alvin and Donna Tuck  
Michael and Amy Tuck  
Michelle and Christopher Tuck

**U**

U.S. Trust Bank of America Private  
Wealth Management  
The Ultimate Companies, Inc.  
Ultimate Helicopter LLC  
United Way of Central & Northeastern CT  
United Way of Massachusetts Bay and Merrimack Valley  
United Way of the Bay Area  
United Way of West Central CT  
United Way, Inc. of Los Angeles

**V**

Peter and Carmelita Valerio  
Matthew and Christina Van Ormer  
Karrine Vanasse

Steven and Joanna Vastola  
Patricia Veits  
William Veits  
Jacqueline Vigue  
Lindsay Vigue Photography  
Racquel and Mike Vlasak

**W**

Rachel and William Wache  
Rhonda and John Walker  
Bruce Wallen  
Walmart Store #2897  
Brian and Maria Walsh  
John Walsh  
Timothy and Mary Walsh  
Valerie Walsh  
The Walt Disney Company Foundation  
Lawrence and Barbara Wanzer  
Arthur and Patricia Ward  
Warner Theater  
Christine Wartonick  
Darlene Wartonick  
Lori Wartonick  
Laura and Christopher Watson  
Webster Bank  
Trudi Wedler  
P. Everett and Joyce Weed  
Trey and Parker West  
Faith Weston  
Julia Weston  
Wheeler Clinic  
Hilary and Josh Whitcomb  
John and Deborah Whitcomb  
Marian Whitcomb

Michael and Maryellen Whitcomb  
Robert and Janet Williamson  
Heather Scarritt Willis and Dudley Willis  
Peter and Erin Wininger  
Susan and Washington Winn  
Bridget and Troy Wiseman  
Anna Woike  
Eleanor Woike  
Wolcott Crossroads, Inc.  
Barbara Wolf  
Mary Jane and Ronald Wollenberg  
Patricia and Robert Wollenberg  
Wollenberg's, Inc.  
Maureen and Brian Wood  
Nancy Woodling  
WTNH News 8  
Joel Wulff  
Wusthof Trident of America, Inc.

**Y**

Craig and Barbara Yarde  
Yarde Metals, Inc.  
Cheryl and David Yetke  
Your Cause, LLC

**Z**

Mark and Lorna Zammett  
Carolyn and Mark Ziogas  
Victoria Ziotas  
David and Stephanie Zomick  
Mary Ellen Zoppo  
Ellen Zoppo-Sassu

A \$4,000 grant from the Women & Girls' Fund at Main Street Community Foundation supported Partnership to **Promote Healthy Relationships**, a program at Prudence Crandall Center that provides domestic and teen dating violence prevention services for youth in Plainville Community Schools. Through these services, Prudence Crandall Center educates youth on the warning signs and risk factors for domestic and teen dating violence, as well as the behaviors and attitudes that lead to healthy relationships.





**Meet George. George was injured and abandoned in a Plainville park in March 2017 and was found by the town's animal control officer. He soon received orthopedic surgery from a specialist through the **Connecticut Humane Society (CHS)** and will continue getting follow-up veterinary care.**

**George was able to get help because of a grant from the Elizabeth I. and Louis J. Matt Animal Protection Fund at Main Street Community Foundation. The grant helped pets from local municipal animal control facilities get medical treatment through CHS' veterinary department.**

#### **GIFTS WERE MADE IN HONOR OF:**

Cathryn Addy  
 Lisa Aiudi  
 Jeanine Audette's Retirement  
 Arnold and Ruth Becker  
 Bread for Life Volunteers  
 Ben, Ellis and Nicholas  
     Carmelich  
 David Casey  
 The Ciccarella-Vitale Family  
 Stacey Clingan  
 Amy Curtis' Birthday  
 Gloria DiFrancesco  
 Rose DiFrancesco  
 The Life of Katherine  
     Dobroczynski  
 Joanne Ellsworth  
 Patti Ewen  
 Bud Funk  
 Kristen Grindal  
 Don Guzauckas Jr  
 Mary Ann Hanley  
 Ryan and Kaitlin Humble  
 Hal Kilby  
 Nathan, Christopher and  
     John King  
 Family, Friends and Lake Garda  
     School Staff  
 John Letizia  
 Tony and Judie Lodovico

Nick Maglio's 70th Birthday  
 Janet Mellon  
 Sue and Mark Moreau's  
     40th Anniversary  
 Sue Moreau's 60th Birthday  
 Onyx Team  
 Alyssa and Haley Pilkington  
 Alice Radcliff  
 Barbara and Charlie Radcliff  
 Betty Radcliff  
 Lisa Salberg  
 Thomas Shackett  
 Ursula Sowinski  
 Elizabeth Stevenson  
 Jim Wartonick  
 Marian Whitcomb's  
     90th birthday  
 Barb Wolf

#### **GIFTS WERE MADE IN MEMORY OF:**

Grace Alta Godere  
 Al Barnes  
 Donna Borysewicz  
 Blanche Brault  
 Jack Breault  
 Veronica Breault  
 Gary Buchanan  
 Theodore Buonocore  
 Ena Carmody

Dennis Chapman  
 Patricia Choiniere  
 Dante Cistulli  
 Dante Cistulli Sr.  
 Frank Croce  
 Nancy Culver  
 Joshua Cunliffe  
 Eileen Dennis  
 Mollie DiMartino  
 Katherine Dobroczynski  
 Jeffrey Downes  
 Karen DuCotey  
 Rose Esposito  
 Patti Ewen  
 Oliva Mae Fusco  
 Rita Gerzanick  
 Murielle Giacomini  
 Tyler James Gingery  
 Jeannie Giovinnazzo  
 Arnold Goldstein  
 Rhoda Goldstein  
 Don Guzauckas  
 Matt Huff  
 Keon Huff Jr.  
 Virginia Ingellis  
 Paul Jaspersohn  
 Tom Jaspersohn  
 Pauline Knightly, Aunt Polly  
 Marcus Kosak  
 Michael Kowalski  
 Rene Lauzier  
 Doris Lazorik

John Lazorik  
 Dave Lepore  
 Debbie MacNamara  
 Nick Maglio  
 Kristen Milano  
 David Mongillo  
 Anthony Nadeau  
 Jonathan Nadeau  
 A.J. Nocera  
 David Nocera Jr.  
 Tony Norton  
 Leenora Oliver  
 Marilee Palmieri  
 Marilyn Peters  
 John Petrucelli  
 Patricia Petrucelli  
 Geoffrey Pierce  
 Mary Prior  
 David Reidy  
 Chelsea Roalf  
 Mary (Mae) Rossvall  
 Jean Sorey  
 Lee Spirito  
 Thomas Thayer  
 Kristen Warner  
 William Wartonick  
 Paige Wartonick Laferriere  
 John Whitcomb  
 Jane Woodard  
 Eva Yacawych  
 Metro Yacawych

#### **GIFTS IN KIND:**

Garrett Printing & Graphics Inc.  
 Kim Lewis  
 Dawn Nielsen  
 Paladin Commercial Printers, LLC  
 Jeanne Radcliff  
 Jenna Sadecki  
 Ron Sadecki  
 Southington Community  
     Cultural Arts  
 Tunxis Community College/  
     Tunxis@Bristol

#### **MATCHING GIFTS:**

Aetna Foundation, Inc.  
 AXA Foundation  
 Barnes Group Foundation, Inc.  
 Benevity Community Impact  
     Fund, a fund of American  
     Endowment Foundation  
 General Reinsurance  
 Corporation  
 The Stocker Foundation  
 Travelers  
 The Walt Disney Company  
     Foundation  
 Your Cause, LLC

## 2017 LEADERSHIP

Main Street Community Foundation welcomes volunteers from our local communities to serve as committee members. If you are interested in this opportunity, please contact us.



**Main Street Community Foundation Board of Directors**

### ASSET DEVELOPMENT COMMITTEE

Kimberly James, *Chair*  
Donna Ayer  
Mary "Gerry" Shopis  
Byron Treado  
Michael Zych  
John D. Scarritt, *ex officio*  
Susan D. Sadecki, *ex officio*

### AUDIT COMMITTEE

Daniel J. Daigle, *Chair*  
David J. Aldieri  
Lisa Attle  
Michael J. Brault  
Dennis Cleary  
Val Dumais  
Anthony Mattioli  
Janis L. Neri  
Jay Sattler  
Barry Thompson  
John D. Scarritt, *ex officio*  
Susan D. Sadecki, *ex officio*

### BOARD DEVELOPMENT COMMITTEE

John A. Letizia, *Chair*  
Thomas O. Barnes  
Michael J. Brault  
Patricia B. Dunn  
Jacqueline Merchant  
John E. Smith  
John D. Scarritt, *ex officio*  
Susan D. Sadecki, *ex officio*

### BY LAWS COMMITTEE

Valerie A. DePaolo, *Chair*  
John A. Letizia  
Jacqueline Merchant  
John D. Scarritt, *ex officio*  
Susan D. Sadecki, *ex officio*

### DISTRIBUTION COMMITTEE

Todd Burton, *Chair*  
Jacqueline Merchant, *Vice-Chair*  
Lisa Attle  
Annie Bonetta  
Michael Brault  
Sue Brennan  
Ronnie Cassin  
Kristine J. Dargenio  
Carol Denehy  
Marguerite P. Fletcher  
Scott Fournier  
Anita Hamzy  
Kimberly James  
Kelly Leppard  
Susan Moreau  
Jeanne E. Radcliff  
Jerald Rafaniello  
Kathryn C. Reinhard  
Anthony Russo  
Janet Schwartz  
Jennifer Scully  
Cyndi Simms  
Barry Thompson  
Caitlin Tracy  
Jarre B. Betts, *ex officio*  
John D. Scarritt, *ex officio*  
Susan D. Sadecki, *ex officio*

### FINANCE COMMITTEE

John A. Letizia, *Chair*  
Thomas O. Barnes  
Mark Blum  
Marguerite P. Fletcher  
Jackie Furniss  
Mark Malley  
William R. Micari  
John D. Scarritt, *ex officio*  
Susan D. Sadecki, *ex officio*

### INVESTMENT COMMITTEE

William R. Micari, *Chair*  
David J. Aldieri, *Vice-Chair*  
Robert M. Caiaze  
Bruce Daigle  
Ginny Fitzgerald  
David Kushlan  
Burton Sonenstein  
Julia Weston  
John D. Scarritt, *ex officio*  
Susan D. Sadecki, *ex officio*

### PERSONNEL COMMITTEE

Scott Fournier, *Chair*  
Elaine Couture  
Marguerite P. Fletcher  
Mary Ellen Hobson  
Jacqueline Merchant  
John D. Scarritt, *ex officio*  
Susan D. Sadecki, *ex officio*

### SCHOLARSHIP COMMITTEE

Scott Fournier, *Chair*  
Patricia B. Dunn, *Vice-Chair*  
Sherwood Anderson  
Dawn Angelillo  
Emily Barnes  
Kim Bernier

Marie Bowes  
Cathy Cassin  
Valerie Furey  
Mary Kay Greger  
David Griszkauskas  
Mary Ellen Hobson  
Hal Kilby  
Paula Knight  
Sandy Knight  
Susan Kozikowski  
Kelly Leppard  
Nancy O'Donnell  
Marilyn Perzan  
Kathryn C. Reinhard  
Rachel Sattler  
Mary "Gerry" Shopis  
Michael Suchopar  
Karen Varasconi  
Christina Welch  
Donna Zapatka  
Jarre B. Betts, *ex officio*  
John D. Scarritt, *ex officio*  
Susan D. Sadecki, *ex officio*

### STEWARDSHIP COMMITTEE

Marguerite P. Fletcher, *Co-Chair*  
Janis L. Neri, *Co-Chair*  
Patricia B. Dunn  
Jacqueline Merchant  
Jennifer J. Scully

### 2017 OFFICERS AND DIRECTORS

John D. Scarritt,  
*Chairman of the Board*  
Michael J. Brault,  
*Vice-Chairman*  
Valerie A. DePaolo,  
*Secretary*  
Marguerite P. Fletcher,  
*Treasurer*  
John A. Letizia,  
*Past Board Chairman*  
Susan D. Sadecki,  
*President & CEO*

David J. Aldieri  
Todd Burton  
Daniel J. Daigle  
Kristine J. Dargenio  
Val E. Dumais  
Patricia B. Dunn  
Scott Fournier  
Mary Ellen Hobson  
Kimberly H. James  
Mark D. Malley  
Jacqueline Merchant  
William R. Micari  
Kathryn C. Reinhard  
Jennifer J. Scully  
Byron J. Treado III

### FOUNDERS

Sherwood Anderson  
Carlyle F. Barnes  
Thomas O. Barnes  
Delores Capers  
Ann Clark  
Terry B. Fletcher  
Edward P. Lorensen  
Robert S. Merriman  
David J. Preleski  
Jeanne E. Radcliff  
John E. Smith  
Christopher Ziogas

### STAFF

Susan D. Sadecki,  
*President & CEO*  
Jarre B. Betts,  
*Vice President of Programs*  
Kate Kerchaert,  
*Program Officer*  
Julie Matthews,  
*Administrative Assistant*  
Rhonda Pilkington,  
*Accountant*  
Samantha R. Rajotte,  
*Communications Manager*

**Main Street Community Foundation Staff**





# FINANCIAL STATEMENTS

## CONSOLIDATED STATEMENT OF FINANCIAL POSITION

|  | December 31, 2017   | December 31, 2016   |
|--|---------------------|---------------------|
| <b>ASSETS</b>                                |                     |                     |
| Cash and Equivalents                         | \$813,728           | \$1,043,119         |
| Investments                                  | 42,886,034          | 37,653,501          |
| Cash Held in Collateral Account              | 100,486             | 100,285             |
| Pledges Receivable, net                      | 1,000               | 2,800               |
| Prepaid Expenses                             | 5,273               | 5,274               |
| Furniture and Equipment, net of depreciation | 10,952              | 15,948              |
| <b>Total Assets</b>                          | <b>\$43,817,473</b> | <b>\$38,820,927</b> |
| <b>LIABILITIES AND NET ASSETS</b>            |                     |                     |
| Grants Payable                               | \$32,267            | \$161,700           |
| Accrued Expenses                             | 8,284               | 5,844               |
| Agency Endowments & Other Component Funds    | 6,694,649           | 6,139,486           |
| <b>Total Liabilities</b>                     | <b>\$6,735,200</b>  | <b>\$6,307,030</b>  |
| <b>Net Assets</b>                            | <b>\$37,082,273</b> | <b>\$32,513,897</b> |
| <b>Total Liabilities and Net Assets</b>      | <b>\$43,817,473</b> | <b>\$38,820,927</b> |

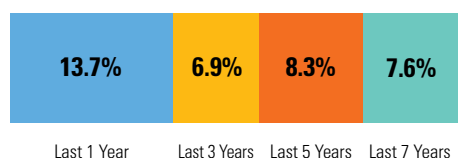
## CONSOLIDATED STATEMENT OF ACTIVITIES

|   | December 31, 2017   | December 31, 2016   |
|---|---------------------|---------------------|
| <b>SUPPORT AND REVENUES</b>                   |                     |                     |
| Fund Contributions                            | \$2,170,052         | \$988,822           |
| Less: Contributions to Agency/Component Funds | (35,208)            | (111,415)           |
| Interest and Dividend Income*                 | 929,541             | 828,759             |
| Other Income*                                 | 160,354             | 158,875             |
| Investment Gains/(Losses)*                    | 3,634,121           | 1,094,108           |
| <b>Total Support and Revenues</b>             | <b>\$6,858,860</b>  | <b>\$2,959,149</b>  |
| <b>GRANTS AND EXPENSES</b>                    |                     |                     |
| Grants*                                       | \$1,283,508         | \$1,031,964         |
| Scholarships                                  | 180,695             | 171,528             |
| Other Expenses                                | 191,314             | 122,703             |
| Operating Expenses                            | 634,967             | 569,472             |
| <b>Total Grants and Expenses</b>              | <b>\$2,290,484</b>  | <b>\$1,895,667</b>  |
| <b>Change in Net Assets</b>                   | <b>\$4,568,376</b>  | <b>\$1,063,482</b>  |
| <b>Net Assets at Beginning of Year</b>        | <b>\$32,513,897</b> | <b>\$31,450,415</b> |
| <b>Total Net Assets at End of Year</b>        | <b>\$37,082,273</b> | <b>\$32,513,897</b> |

\*Net of Agency & Component Fund Activity

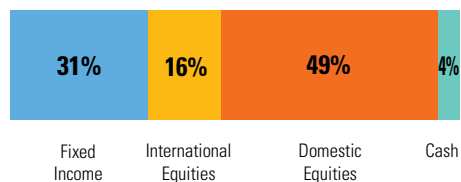
## HISTORICAL INVESTMENT PERFORMANCE

Returns as of December 31, 2017, reported net of investment management fees:

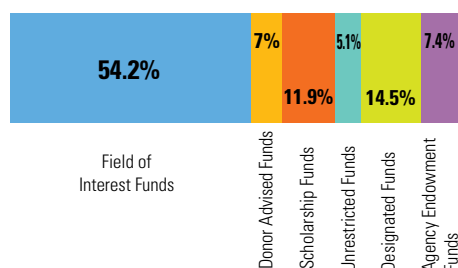


## HOW YOUR COMMUNITY'S ENDOWMENT IS INVESTED

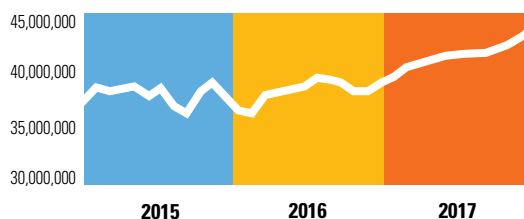
Asset Allocation as of December 31, 2017:



## 2017 PERCENTAGE OF TOTAL ASSETS BY FUND TYPE



## HOW YOUR COMMUNITY FOUNDATION IS GROWING





120 Halcyon Drive  
P.O. Box 2702  
Bristol, CT 06011-2702

NONPROFIT  
ORGANIZATION  
U.S. POSTAGE  
**PAID**  
HARTFORD, CT  
PERMIT #1121

## ANNUAL REPORT 2017



### Main Street Community Foundation

120 Halcyon Drive  
P.O. Box 2702  
Bristol, CT 06011-2702

Phone: 860.583.6363  
Fax: 860.589.1252  
[www.mainstreetfoundation.org](http://www.mainstreetfoundation.org)

 [facebook.com/MainStreetCommunityFoundation/](https://facebook.com/MainStreetCommunityFoundation/)



Confirmed in Compliance with National Standards  
for U.S. Community Foundations.

Excellence. Accountability. Impact.™

