

SETTING NEW DIRECTIONS

2 0 1 3 A N N U A L R E P O R T



Main  Street
COMMUNITY FOUNDATION

BRISTOL | BURLINGTON | PLAINVILLE | PLYMOUTH | SOUTHLINGTON | WOLCOTT

► **TABLE OF CONTENTS**

A Message to Our Neighbors.....1

GIFT PLANNING.....2

Funds Established in 20133

Becoming a Donor/Establishing a Fund5

Bequests – Elizabeth I. Matt.....6

Memorial Gifts6

Planned Giving/ The Cornerstone Society7

EFFECTIVE GRANTMAKING.....8

2013 Grant Distributions9

Technology Supports Adult Education.....13

Plymouth Community Food Pantry Grant13

2013 Scholarships and Awards.....14

Applying for Grants and Scholarships15

COMMUNITY LEADERSHIP16

Increasing Awareness of Technical-Based Career Pathways17

Grant Supports Educators’ Learning of STEM Related Careers.....18

Addressing the Needs of Children and Families in Our Communities.....18

STEWARDSHIP OF ASSETS.....19

Donor Advised Funds20

Agency Endowments.....20

Designated & Project Funds.....20

Field of Interest Funds21

Scholarship Funds22

Unrestricted Community Funds.....22

Sustainability Funds.....22

Bradley Barnes Memorial Trust23

Burlington Bell Community Fund24

Make a Mark Region 10 Enrichment Fund24

Plainville Community Fund25

The Women & Girls’ Fund.....26

Grant Fosters Senior Women’s Wellness and Independence26

Bristol Talks Teal27

Friends of the Foundation28

Gifts Received in 2013.....29

2013 Officers, Directors & Committees32

Financial Statements33

2013
HIGHLIGHTS

- **\$33.1 million** in total assets
- **\$1.8 million** in contributions received
- **\$1.2 million** in grants and scholarships to our community
- **182 funds** established since 1995
- **200+ volunteers** supporting the Main Street Community Foundation
- **Recognized with a Business Partner of the Year Award** from the Bristol Board of Education and a **Hands & Hearts Award** from Wheeler Clinic

Vision, Mission, and Core Values

OUR VISION

To be widely recognized as the comprehensive center for philanthropy in the communities of Bristol, Burlington, Plainville, Plymouth, Southington and Wolcott.

OUR MISSION

To enhance the quality of life for both present and future generations in the communities we serve. We accomplish our mission by encouraging and promoting:

- Gift Planning
- Prudent Stewardship of Assets
- Effective Grantmaking
- Community Leadership

OUR CORE VALUES

Excellence, Integrity, Inclusiveness & Transparency in all we do.

Main Street



200 Main Street
P.O. Box 2702
Bristol, CT 06011-2702
Tel. 860.583.6363
Fax 860.589.1252
www.mainstreetfoundation.org

A MESSAGE TO OUR NEIGHBORS

Stewardship – Leadership – Trust – Giving – Legacy – Partners

2013 was filled with many opportunities for “Setting New Directions” in local philanthropy throughout the communities of Bristol, Burlington, Plainville, Plymouth, Southington and Wolcott. The Main Street Community Foundation (MSCF) exists to help generous people fulfill their charitable goals and to make sure every donation finds its way to the most deserving organizations. In this year’s report you will read about donors establishing new funds that will help to set nonprofit organizations as well as students on the pathways to success, the many ways the Women & Girls’ Fund is transforming lives, and new directions for improving the health and wellness of Southington residents through the legacy of Bradley Henry Barnes. You will also read the many ways community residents are coming together to volunteer on advisory committees for community endowments and leadership initiatives for education enrichment and community well being.

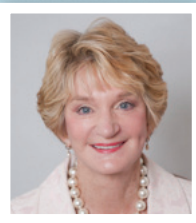
We are proud to report that our investment strategy led to a healthy 15% net return and our financials received an unqualified opinion from the accounting firm, King, King and Associates, PC. A near-record amount of grants, \$1.2 million, was awarded to support nonprofit organizations, educational dreams for local students and important community leadership initiatives known as “Money in Motion.” You can read more about Money in Motion on pages 16-18 of this report.

In mid-2013, we initiated our first Donor Survey to over 200 MSCF supporters. Our objective was to gain a better understanding of the primary motivators for choosing to donate to MSCF and to provide an opportunity for donors to express opinions regarding our donor services and our community impact. With a 34% response rate, the survey offered the board of directors the information to further define strategic goals for continued growth of the foundation. 98% of respondents said that “MSCF was making a positive impact in the community”; 96% said they would recommend the foundation to others; 96% said that “MSCF values me and my charitable wishes”; and 88% viewed MSCF as a catalyst for community improvement.

In 1995, a vision was established to create a comprehensive center of philanthropy in our region. Nineteen years later, the significance of that founding vision continues because of many caring individuals, families, businesses and organizations. As we set new directions for advancing that vision, this annual report is our opportunity to share with you the stories of our donors and their investments in the communities we serve. Additionally, it is an opportunity to recognize the collective philanthropy of all who supported and continue to support the Main Street Community Foundation so we can continue to build a permanent resource of funding to support our local communities – *forever*.



Sincerely,
Susan D. Sadecki
President & CEO



Janis L. Neri
Chairman of the Board



► Read more about how grants and scholarships are impacting your community on pages 8 - 15.



Gift Planning

Since our founding in 1995, endowed gifts and bequests have been the cornerstone of charitable contributions to the Main Street Community Foundation. Each of the following funds established in 2013 reflects a donor's interest or philanthropic objective to leave a legacy and make a difference in one or more of the towns in our service area – Bristol, Burlington, Plainville, Plymouth, Southington and Wolcott.

FUNDS ESTABLISHED IN 2013



Wally Barnes Fund for Community Leadership Initiatives

This fund was established in honor of longtime Bristol resident and business leader Wallace Barnes. It will provide support for leadership initiatives identified by the Foundation in the six communities served, to promote collaborative solutions in an effort to build stronger communities. Such efforts may include, but are not limited to: facilitation of community conversations and focus groups, community needs assessments, development of cross sector partnerships, and capacity building efforts.



Caiaze Family Charitable Fund

Burlington residents Rob and Rebecca Caiaze have long supported charitable causes in their local community and surrounding towns. Through this advised fund they will continue fulfilling their charitable goals by recommending grants to support a variety of charitable organizations and community needs.



Bristol Talks Teal Fund

Tony Lodovico established this fund in honor of his wife Judie, an ovarian cancer survivor. The fund's primary purpose is to raise awareness of ovarian cancer symptoms in order to increase early detection of the disease and save women's lives. In September, National Ovarian Cancer Awareness Month, teal colored ovarian cancer awareness ribbons are displayed throughout Bristol to "Turn the Town Teal". The annual campaign also supports a national nonprofit organization, "Turn the Towns Teal", which supports ovarian cancer awareness campaigns throughout the USA.



George & Maureen Carpenter Family Charitable Fund

The Barnes Group Foundation established this fund to honor local business leader George Carpenter and his wife Maureen in recognition of George's twenty-eight-years of service as a member of the Barnes Group Board of Directors. This advised fund will support a variety of charitable organizations and causes, primarily in the communities served by the Main Street Community Foundation.



Sid Bernard & Ed Miller Children's Fund for the Visual Arts

Inspiring the next generation of artists, Ed Miller established this fund to offer opportunities to primary and middle school age students through support of programs and projects that teach innovative or traditional art education skills. Grants will be awarded to nonprofit, nonreligious organizations that offer visual arts education programs for students from Bristol.



Calvanese Foundation Green & White Fund for Behavioral Health

The Joe & Kay Calvanese Foundation established this fund to honor the memory of the children and adults who lost their lives in Sandy Hook, CT due to a school shooting on December 14, 2012. The fund will provide support to adults and children residing in Southington who are in need of mental health and/or substance abuse treatment services. Grants from the fund will also be used to support initiatives to educate the community on the importance of early mental health screening; as well as access to care, information, and other programs to support a healthy community.

► FUNDS ESTABLISHED IN 2013



Friends of Bristol Parks and Recreation Fund

This fund will serve as a collection mechanism for donations and grant funds from the community at large who wish to support park enhancement projects identified by the Bristol Parks and Recreation Department.



Samuel Goodsell Park and Playground Fund

Established by a bequest in 1973 from Bristol resident Samuel J. Goodsell, this trust was transferred to the Foundation by the City of Bristol to administer in perpetuity. Distributions from this fund will be used for the care, maintenance, improvement, acquisition and extension of parks and playgrounds in Bristol, Connecticut.



JoAnn & David Mills Family Fund

Dedicated in memory of JoAnn Mills, this fund was established by her husband, David Mills to support a variety of charitable organizations primarily in the communities served by the Foundation. The Mills Family has been a long-time supporter of the Greater Bristol community both through volunteerism and public service to the city they cherish.



Al and Joan Monico Scholarship Fund

Al and Joan Monico, longtime Bristol residents, wanted to leave a legacy to the city by supporting the educational goals of future generations. Upon Al's passing, the Foundation received a generous bequest to establish a permanent scholarship fund to provide tuition assistance to Bristol residents for post-secondary education.



Ralph Papazian Memorial Scholarship Fund

This scholarship fund honors the memory of Ralph Papazian who passed away unexpectedly in 1995. Ralph was the former supervisor of athletics for the Bristol Public School system, a coach and physical education teacher. This fund will award an annual scholarship to a graduating senior from Bristol Central High School or Bristol Eastern High School, on a rotating basis.



Holly Scanlan Memorial Fund

Established by Tim Scanlan, this fund honors the memory of his wife Holly Scanlan who passed away in 2012 after a courageous battle with cancer. In honor of Holly's commitment to giving back to her community, this fund will provide support to families afflicted by cancer.



Jill Lynne Shackett Educational Scholarship Fund

Jill Lynne Shackett had a true passion for teaching and was a beloved teacher at South Side School in Bristol who passed away unexpectedly at the young age of 35. This scholarship fund was established by her family and friends to keep her memory alive. Scholarships from the fund will provide assistance to students passionate about education who have a strong desire to become an elementary or secondary education teacher. Preference will be given to students who attended school in Bristol, particularly at South Side School or Bristol Eastern High School.

“The heart that gives, gathers.”

– Marianne Moore

► BECOMING A DONOR/ESTABLISHING A FUND

There are many ways to donate to the Main Street Community Foundation and support worthwhile charitable organizations in our service area of Bristol, Burlington, Plainville, Plymouth, Southington and Wolcott, Connecticut. The Foundation offers a range of personalized services to help donors fulfill their charitable goals. As partners in philanthropy, we work with each donor to establish a fund or gift plan without complex administrative burdens.

BECOMING A DONOR

GIVE TO AN EXISTING FUND

A donor can support the Foundation's ongoing work with an unrestricted gift of any amount. Contributions can also be made to any of the Foundation's permanent endowment funds which benefit a diverse range of charitable purposes.

ESTABLISHING A NEW FUND

Our donors are individuals, families, companies and charitable organizations. Donors can establish a fund using a variety of gift giving vehicles including: cash, stock, retirement assets, other tangible personal property, bequests and other planned gifts. The Foundation requires a minimum of \$10,000 to establish a permanently-named fund. This gift can be given as a lump sum or over a period of time during a donor's life. Donors may also leave charitable assets upon their death in the form of a bequest in will or trust, retirement plan designations or beneficiary designation in a life insurance policy. A fund can be established as a permanent endowment or as a temporary fund in which income and principal will be distributed.

DONOR SERVICES

The Main Street Community Foundation provides permanent, professional management of charitable funds without the expense or effort of establishing a private foundation. The Foundation's assets are professionally managed with oversight by the Investment Committee and Board of Directors. There is no cost to set up a fund. There is a modest management fee which supports the administrative operations of the Foundation. Donor benefits include:

- Choice of fund type and fund name
- Grant making support and counsel
- Administration of gifts and grants
- Maximum tax advantages allowed by law
- Prudent investment management
- Permanent recognition or remain anonymous at donor's discretion

OUR FLEXIBLE FUND OPTIONS INCLUDE:

UNRESTRICTED COMMUNITY FUNDS

Flexible and responsive to emerging and changing community needs. Donors place no restrictions on their gifts and leave decisions about charitable use of the funds to the Foundation.

FIELD OF INTEREST FUNDS

Allow donors to support a broad category of need such as the arts, healthcare, education, environment or a geographic area. Grant recipients are selected by the Foundation's Distribution Committee.

DONOR ADVISED FUNDS

Help donors participate actively in grantmaking by suggesting charitable organizations to receive grants. Foundation staff assist donors by researching grant requests and connecting donors with potential grant recipients.

DESIGNATED FUNDS

Allow donors to designate support for a specific

charitable organization. If the named charity ceases to exist, another organization with a similar purpose is selected by the Foundation's Board of Directors to assure their purpose for giving will be honored in perpetuity.

AGENCY ENDOWMENT FUNDS

Established by a nonprofit organization as a means of protecting their charitable dollars for the future and to ensure an annual source of support for their programs and operations.

SCHOLARSHIP FUNDS

Allow donors to establish a named fund for any level of education. Donors may designate a particular school, field of study and select eligibility criteria.

SUSTAINABILITY FUNDS

Allow donors to make gifts that provide support for the ongoing work of the Foundation.

ADDITIONAL SERVICES

The Foundation can assist private foundations or other grant making institutions in a variety of ways that include:

- Administration of grant making programs
- Project review for possible funding
- Advisement on community needs and priorities
- Assistance to private foundations to meet pay-out requirements

Elizabeth I. Matt Bequest to Benefit Students and Animals in Need

Elizabeth I. Matt, known as “Betty” to many, was a woman who fully understood the importance of philanthropy and the role it played in her community and in the lives of her neighbors.

Betty left a \$334,000 planned gift to substantially add to two funds at the Main Street Community Foundation that she started during her lifetime by naming the Foundation as the beneficiary of her IRA. The Elizabeth I. and Louis J. Matt Animal Protection Fund and the Elizabeth I. & Louis J. Matt Medical Scholarship Fund are named in honor of her and her late husband, Louis J. Matt.

The Elizabeth I. and Louis J. Matt Animal Protection

Fund was established at the Foundation in 2006 with a \$10,000 gift from an IRA charitable rollover. Distributions from the Fund will provide care and support to animals in need in Connecticut. Both Betty and Louis had a life-long love of and fascination for animals with a special interest in their care and well being.

Until this year, the fund had a limited amount of money available for distribution. However, this limited distribution amount had a great impact on several animals in crisis, as well as a disabled person who is dependent on the assistance of service dog. Small grants were provided as “immediate aid”. For example, the fund provided for the purchase

of food and veterinary care of abandoned pets. Additionally, when a certified service dog needed surgery for an injury that had limited its mobility, the Fund supported the cost of the procedure.

The Elizabeth I. & Louis J. Matt Medical Scholarship Fund was originally established via a stock transfer worth \$10,500 in 2007. An annual scholarship will be awarded to a graduating high school senior in the Foundation’s service area that is pursuing education in the medical field. As evidenced by her 48-year career as a nurse at Hartford Hospital, Betty had a true interest in and passion for the clinical medicine field. This scholarship will help provide a student the

opportunity to follow their passion into the medical field.

Through planned giving, Betty Matt created a legacy by establishing funds at Main Street Community Foundation during her lifetime. After her death, her generosity continued in the form of a bequest, which will increase the reach and impact of her legacy for years to come. ◀



Elizabeth I. Matt

GIFTS WERE MADE IN MEMORY OF:

Michael Aldieri	Karen Ducotey	Philip E. Leary	Marian Piotrowski
Bob Allaire	Gloria Duperre Yuscanitch	Glory Ann Lemoine	Anita Popik
Caroline Avignone	Robert Finkelstein	Augie Lepore	Donald F. Radcliff
Ronald P. Baker	Rita Foley Earley	Harold & Elizabeth Lowrey	Jim Reidy
Al Barnes	Betty Garande	Gene and Jean Luboyeski	Mary (Mae) Rossvall
Bart Barnes	Geatana and Angelo Genovese	Therese MacCallum	Carl R. Sellberg, Jr.
Janet S. Beach	Margaret Gerrity	Margaret Maglio	Jill Shackett
Blanche Brault	Andrew and Murielle Giacomini	Nicholas P. Maglio	Joan Sinkwich
Jack and Veronica Breault	Bruce Gingery	Alice Mastrianni	Olcott V. Snow
Gary Buchanan #7	Joe Gnazzo	Carmen Merriman	Judith Ventres
Larry Burns	AJ Godbout	AJ Nocera	Fernand Viens
Donald Cassin	Ruth Goodrich	David Nocera, Jr.	Kristen Warner
Leona Chapdelaine	Nabih Hamzy	Marjorie Nye	Paige Wartonick Laferriere
Dante Cistulli	John Ingellis	Leenora Oliver	William Wartonick
Frank Coon	Virginia Ingellis	Susie Parker	John Whitcomb
Don D’Amico	Arthur Karanian	Anthony Pellegatto	Marlene Wright
Helen Nevsky DiGiovanna	Jianny B. Keegan	Jennifer, Hayley and Michaela	Eva and Metro Yacawych
Anna Doyle	Megan Landers	Petit	

Memorial Gifts, Bequests and Planned Giving



A cornerstone provides a strong support to a structure for its future stability.

Laying this groundwork for the future is critical. Like this permanent support, Cornerstone Society members lay the groundwork for the organizations and causes they care about most and the future stability of the foundation.



The opportunity to give later is simple. You can leave a bequest to the Main Street Community Foundation for the community causes you care about in will or trust, through a retirement plan designation, life insurance beneficiary designation, remainder interest in real estate, or other planned giving vehicles. We are pleased to recognize the following very generous individuals who have made or have communicated their plans to leave a gift to the Foundation in their will, estate plan or some other deferred gift.

The Main Street Community Foundation is built on the dreams and desires of people who are part of the Foundation’s service area.

For some people, the desire to create a legacy comes during their life as a current gift. For others, these legacies are shaped by the donor as future bequests or planned gifts. At still other times, a tragic event, such as a sudden death, will be the impetus for memorial gifts that may then be used as the beginning of an endowed fund in a loved one’s name. Large or small, all of these gifts will enhance the quality of life in our community for generations to come.

If you have included the Main Street Community Foundation in your estate plan and would like to be included in the Main Street CornerStone Society, please contact the Foundation office at 860.583.6363.

Cornerstone Society Members

Anonymous 1	Robert & Carmen Merriman
Anonymous 2	Laura Schlesinger Minor
Anonymous 3	Janis Neri
Anonymous 4	Robert & Ella Mae Packard
Carlyle & Elizabeth Barnes	Richard E. & Margaret W. Palarczyk
Tom & Melanie Barnes	David & Kathy Preleski
Sidney M. Bernard & Edward J. Miller	Jeanne Radcliff
Whit & Jarre Betts	Daniel & Patricia Saccu
Bryan Bowerman	Noreen Schumann
Marjorie E. Budge	John E. Smith
Ken Burns	Bill & Kim Tracy
Robert & Rebecca Caiaze	Karen Ann Varasconi
Father Salvatore Cavagnuolo	
Dr. Ann Clark	Bequests Fulfilled:
Raymond & Lorraine Corsini	Irene Brzezinski
Roland & Shirley Dumont	Mark M. Keating
Terry & Marguerite Fletcher	Elizabeth I. Matt
Mark & Michelle Gibson	Al & Joan Monico
Bill & Anita Hamzy	Eva M. Pierce
R. Stanley & Marjorie R. Harrison	Glo Sessions
Hal Kilby	Elizabeth M. Tyrrell
David Kushlan	

Effective Grantmaking

The Main Street Community Foundation welcomes grant applications from any organization serving the Connecticut communities of Bristol, Burlington, Plainville, Plymouth, Southington, and Wolcott. An organization must be recognized as a tax-exempt public charity under section 501(c)(3) of the Internal Revenue Code. Grants are made in the fields of arts & culture, community development & outreach, education, health, human services, environment, and animals. Grant application guidelines are available for each of grant programs listed. Interested organizations should contact the Foundation office at 860.583.6363 to first discuss any proposal ideas and application process.

The distribution process for grants from both Immediate Response and Donor Advised funds are approved throughout the year, as requests or special initiatives are presented to the Foundation. These requests are matched to the interests of specific funds. Scholarships are available to individuals pursuing educational goals at various levels of education and in a variety of fields.



2013 GRANT DISTRIBUTIONS

In 2013, the Main Street Community Foundation distributed \$1,207,499 in grants and scholarships

Grants from General Grant Process \$69,415

► Meeting the Needs of Our Most Vulnerable Citizens

Bristol Adult Resource Center	\$1,500
To support an exercise and nutrition program for the clients <i>Smith Family Charitable Fund</i>	
Bristol Housing Authority	\$3,000
To support computer access for the GED programs at Cambridge Park as well as for basic computer classes and training in job readiness skills <i>Douglas and Noreen Schumann Special Interest Fund</i>	
Children in Placement	\$5,000
To support the volunteer advocate program for children in the Probate Court <i>Douglas and Noreen Schumann Special Interest Fund Dumont Family Charitable Fund</i>	
Christian Fellowship Center	\$6,295
To support the purchase of a walk in refrigerator for the soup kitchen <i>Bristol Brass General Grant Fund Ciccarelli-Vitale Community Advancement Fund Jaspersohn Family Memorial Fund</i>	
Community Counseling of Central CT	\$2,000
To support a therapeutic art program in Wolcott <i>Bristol Brass General Grant Fund Turkus Family Fund</i>	
Covenant to Care for Children	\$4,000
To support the Critical Goods Program which provides bedding and basic items for children in need <i>Douglas and Noreen Schumann Special Interest Fund Paige Wartonick Laferriere Memorial Fund Bristol Brass General Grant Fund</i>	
Hartford Area Habitat for Humanity	\$7,500
To support the building of housing units in Bristol <i>Bristol Brass General Grant Fund Angela and Al Caruso Family Charitable Fund Ronald F. & Emilie P. Duhaime Family Fund Formagioni-Lodovico Family Fund Tedesco-Gallant Charitable Fund</i>	
Parent & Child Center of Bristol Hospital	\$5,000
To support the Family Life Works program at the Center <i>Fuller & Myrtle Barnes Fund for Education</i>	
Plainville Community Food Pantry	\$4,100
To support The Bread Van program <i>Jim & Eleanor Frawley Community Fund Edward W. and Audrey K. Mink Memorial Fund Gnazzo/Reidy Charitable Fund Bristol Brass General Grant Fund</i>	

Plymouth Community Food Pantry	\$2,200
To support the purchasing of nutritional foods for the food pantry <i>Bristol Brass General Grant Fund</i>	
► Strengthening Education and Development of Our Youth	
West Bristol School	\$1,200
To support the peer leadership academy mentoring program at West Bristol School <i>Fuller & Myrtle Barnes Fund for Education</i>	
Burlington Library Association	\$4,150
To support the purchase of an Early Literacy Station <i>James R. Parker Trust</i>	
► Preserving History and Cultural Heritage	
American Clock & Watch Museum	\$3,000
To support a strategic planning consultant to work on the research and development of a 3-5 year plan for the museum <i>Bristol Brass General Grant Fund Jay & Elizabeth Tyrrell Fund for the Arts</i>	
Bristol Historical Society	\$2,070
To support the purchase of a laptop, scanner to archive and catalog items and an LCD projector to be used for presentations to schools and other public venues <i>Bristol Brass General Grant Fund</i>	
► Expanding Audiences and Supporting Local Arts Institutions	
Bristol Central High School	\$5,000
To support the refurbishing of the auditorium in the area of seats and lighting/sound systems <i>Bristol Brass General Grant Fund</i>	
Nutmeg Symphony	\$1,500
To support educational concerts for third graders from towns in the Foundation's service area <i>Gnazzo/Reidy Charitable Fund Margaret Haberman Memorial Fund for Music James R. Parker Trust</i>	
► Promoting Health, Wellness, Physical Activity, and Youth Sports Programs	
Bristol Girls Little League Softball	\$400
To support the purchase of a nail drag to maintain the field <i>Malerbo Children's Field Maintenance Fund</i>	
Canton/Burlington Youth Football	\$3,800
To support the purchase of helmets for the youth in the program that live in Burlington <i>James R. Parker Trust</i>	

Hartford Area Habitat for Humanity volunteers raise a wall on a Bristol home.

► 2013 GRANT DISTRIBUTIONS

McCabe Waters Little League	\$600
To support the purchase of two pro baseball turf home plates <i>Malerbo Children’s Field Maintenance Fund</i>	
Town of Plymouth	\$1,000
To support construction of the concrete mat for the new skate park project <i>Bristol Brass General Grant Fund</i>	
Wolcott Grange	\$3,775
To support an educational garden project at the Grange <i>Bristol Brass General Grant Fund</i> <i>Fuller & Myrtle Fund for Education</i> <i>Edward W. & Audrey K. Mink Memorial Fund</i> <i>Merriman Family Fund</i>	
► Protecting the Health and Welfare of Citizens	
Town of Burlington	\$2,325
To support the purchase of 5 hand held Ham radios and 15 uniform jackets for the Community Emergency Response Team in Burlington <i>James R. Parker Trust</i>	

Grants from Bradley Henry Barnes & Leila Upson Barnes Memorial Trust	\$635,000
Central CT Senior Health Services - \$185,000	
To support capital costs to implement a new medical record system to support health care needs of Southington residents	
Hospital of Central CT/Bradley Memorial Campus - \$150,000	
To support the purchase of a portable echocardiograph machine with vascular probe for the Bradley Memorial Cardiology Department	
Southington - Cheshire Community YMCA - \$300,000	
To support the purchase and installation of an elevator to transport members, especially those with physical limitations, to the basement pool location	

Grants from the Burlington Bell Community Fund	\$2,500
Burlington Library Association	
To support a book back pack program with the Burlington Library	
Town of Burlington	\$1,000
To support the food and fuel banks	
Town of Burlington	\$1,000
To support the purchase of furniture and equipment for the Safe Harbor program	

Grants from Plainville Community Fund	\$7,000
Linden Street School	\$700
To support and expand the Go Green Project, an enrichment program for the students, using earth boxes to grow vegetables	
New Britain Symphony	\$800
To support the Annual Young Peoples Concert for fifth graders from Plainville	
Plainville Choral Society Youth Theater	\$1,000
To support summer programs for youth in need	
2013 Plainville High School/YMCA Project Graduation	\$1,000
To support the project graduation event at the YMCA	
Plainville Historical Society	\$600
To support the purchase of archival storage boxes for the preservation of artifacts	
Plainville Schools	\$1,200
To support the purchase of materials for Family Math Night at the 3 Plainville elementary schools	
Town of Plainville	\$1,700
To support the resurfacing of the walking track at Norton Park	

Grants From Women & Girls’ Fund	\$30,760
<i>John & Gloria DiFrancesco Fund for Women & Girls</i> <i>Barbara Hackman Franklin Fund for Women</i>	
Bristol Boys & Girls Club	\$2,100
To support the purchase of supplies for the Smart Girls program	
Bristol Community Organization	\$3,000
To support a pilot program called “Rx for Success” in which mothers of children in Head Start will receive educational supports to gain employment	
Bristol Girls Little League Softball	\$3,500
To support pre-season skills and confidence building clinics for those involved in softball	
Bristol Technical Education Center	\$3,643
To support the BTEC Girls’ Healthy Choices Program which explores life choices for women pursuing technical careers <i>John & Gloria DiFrancesco Fund for Women & Girls</i>	
Bristol Youth Services	\$1,670
To support the Skills to Pay the Bills program which provides social/family life education and independent living skills	
Central CT Senior Health Services	\$4,800
To support the Good Life Fitness for Women program in which low income elderly women receive individualized exercise interventions <i>Barbara Hackman Franklin Fund for Women</i>	

Girl Scouts of Connecticut	\$2,000
To support camperships for girls in our service area to attend Girl Scout camps in 2014	
Plymouth Family Resource Center/Education Connection	\$525
To support the professional development of women in licensed home based child care	
United Way of West Central CT/Bristol Early Childhood Alliance	\$3,655
To support the Maternal Depression Screening Initiative which connects expectant and new mothers with the resources needed to address mental health issues	
Wheeler Clinic	\$2,500
To support the Giving Girls Power through Gender-Based Education initiative by proving gender-specific reading and video resources to students	
YWCA of New Britain	\$2,000
To support a teen empowerment group at Plainville High School	
Women & Girls’ Immediate Response Fund	\$1,367

Grants from the Make A Mark Region 10 Enrichment Fund	\$2,400
Har-Bur Middle School	
To support the purchase of costumes for the Just Dance program – an after school program for 20 students in 5-8th grade	
Harwinton Consolidated School	\$1,000
To support the Super Reader Book Club with e-readers	
Harwinton Consolidated School	\$150
To support the purchase of musical instruments for a kindergarten classroom	
Lewis S. Mills High School	\$500
To support the purchase of books for the Lewis Mills Book Club	
Lewis S. Mills High School	\$250
To support the purchase of software and supplies for the VEX Robotics Club	

Grants From Designated Funds/Agency Endowments	\$145,492
Bristol Boys & Girls Club	\$1,015
<i>Edward Ingraham Fund</i>	
Bristol Boys & Girls Club	\$1,000
<i>Charles Kushlan Memorial Fund</i>	

2013 GRANT DISTRIBUTIONS ◀

Bristol Career Center	\$18,415
<i>Bristol Career Center of Tunxis Community College Endowment Fund</i> <i>Bristol Career Center of Tunxis Community College Endowment Fund II</i>	
Bristol Business Education Foundation	\$600
<i>Bob and Carol Messier Family Fund</i>	
Bristol Hospital Development Foundation	\$5,500
<i>Bristol Hospital Development Foundation Fund</i>	
Bristol Eastern High School/Suffolk Construction	\$50,000
<i>Bristol Eastern High School Athletic Fund</i>	
Burlington Land Trust, Inc.	\$1,730
<i>Burlington Land Trust Fund</i>	
Burlington Library	\$570
<i>Burlington Library Association Fund</i>	
City of Bristol Parks and Recreation Department	\$20,352
<i>Samuel Goodsell Park and Playground Fund</i>	
Connecticut Historical Society	\$345
<i>Connecticut Quilt Registry Legacy Fund</i>	
Environmental Learning Centers of CT, Inc.	\$5,790
<i>Environmental Learning Centers of CT, Inc. Fund</i>	
Hypertrophic Cardiomyopathy Association	\$430
<i>Tyler James Gingery Memorial Fund</i>	
New England Carousel Museum (Fire Museum)	\$2,600
<i>Hap Barnes Fund for Fire Safety & Prevention</i>	
Southington Community YMCA	\$4,530
<i>Bradley Henry Barnes Fund for the Southington Community YMCA</i>	
Tunxis Community College	\$6,190
<i>Tunxis Community College Fund</i> <i>Tunxis Community College II Fund</i>	
Turn the Towns Teal	\$750
<i>Bristol Talks Teal Fund</i>	
United Way of West Central CT	\$5,400
<i>United Way of West Central CT Fund</i>	
West Cemetery Association	\$14,760
<i>Carlyle F. Barnes Memorial Chapel Trust</i>	
The Wheeler Clinic	\$5,515
<i>The Wheeler Clinic/Dennis Keenan Fund</i>	

Scholarship Grants	\$112,009
Immediate Response Grants	\$10,039

Community Initiatives and Other Grants \$16,294

- Har-Bur Middle School \$1,900
To support Rachel's Challenge at Har-Bur Middle School
James R. Parker Trust
Make A Mark Region 10 Enrichment Fund II
- Connecticut Center for Advanced Technology \$2,300
Money in Motion Fund
- New England Spring and Metalstamping Association \$110
To educate guidance counselors about manufacturing opportunities
Money in Motion Fund
- Universal Health Care Foundation of Connecticut \$500
To support education and information about health care
Money in Motion Fund
- Burlington Bell Community Fund \$5,000
To support and promote fundraising efforts
Bristol Brass General Grant Fund
- Bristol Police Department \$6,484
To support the purchase of a forensic evidence device
In collaboration with the Farmington Bank Community Foundation
and the Smith Family Charitable Fund at the Main Street Community Foundation

Sustainability Fund Grants \$25,280

- Main Street Community Foundation \$25,280
Barnes Group 150th Anniversary Fund
Main Street Community Foundation Endowment Fund
Dave and Edith Scarritt Fund
Yarde Metals Community Fund



Dr. Joshua Rock and Dr. Inku Lee of the Hospital of Central Connecticut with the portable echocardiograph machine for the Bradley Memorial Campus Cardiology Department.



A partnership with Farmington Bank Community Foundation led to a grant award to the Bristol Police Department.



Safe Harbor Student Representative Ethan Shafer at work renovating the new Activities Center.

Grants from Donor Advised Funds Supported the Following Organizations and Charitable Interests \$151,310

- Joe Andruzzi Foundation, Inc.
Bristol Adult Resource Center
Bristol Boys & Girls Club and Family Center
Bristol Historical Society
Bristol Hospital Development Foundation
Bristol Parks & Recreation
Bristol Police Department
Bristol Sports Hall of Fame
Bristol Technical Education Center
The Bushnell
Children In Placement
Connecticut Children's Medical Center Foundation
Environmental Learning Centers of CT
First Congregational Church of Bristol
Ron Foley Pancreatic Cancer Foundation, Inc.
Dave Lepore Journalism Scholarship at Main Street Community Foundation
Main Street Community Foundation
National Conference for Community & Justice
New England Carousel Museum
Renbrook School
St. Ann Church
Shepard Meadows Therapeutic Riding Center
Southington Community YMCA
Trustees of Deerfield Academy
United Way of West Central Connecticut

TOTAL GRANTS AWARDED \$1,207,499

Technology Supports Adult Education

Beginning in 2014, Connecticut General Equivalency Diploma (GED) coursework and testing require students to have access to a computer and basic computer skills. As the number of people competing for entry level jobs has increased, prospective employers have raised their expectations of job candidates' educational levels. Entry level jobs are now difficult for adult Americans to obtain without a high school diploma or GED credential.

The Housing Authority of the City of Bristol (BHA) provides housing for low and moderate income families, elderly and non-elderly disabled as well as a wide range of services to the residents. The mission of BHA is to "create opportunities for affordable housing in a suitable living environment and to promote self-sufficiency in our community."

In the past, financially challenged residents lacking adequate childcare options, personal computers, or transportation to the Bristol Adult Education Center were deterred from pursuing a GED. To surmount these obstacles, BHA partnered with Bristol

Adult Education to offer GED classes on site to residents who live in Cambridge Park, Bonnie Acres, and other surrounding Section 8 housing residences.

Until recently, GED students taking courses at Cambridge Park did not have access to the technology resources necessary for developing basic computer proficiency skills, conducting job searches, or fulfilling the new GED program requirements. However, a grant in the amount of \$3,000 from the Douglas and Noreen Schumann Special Interest Fund has funded the refurbishment of seven laptop computers, wireless mice, zip drives, and a printer.

Jessica Dunn, Resident Service Coordinator at Cambridge Park, said, "Our goal is to expand the program by partnering with Tunxis Community College to offer workshops in resume and cover letter writing, mock interviews, how to dress in professional attire, and other job placement skills." The GED program is an important resource to foster economic self sufficiency among BHA residents.

Grant Enables Plymouth Community Food Pantry to Accomodate Special Dietary Needs

Residents with limited income who need the assistance of a food pantry choose their food based on what others are willing to give.

Fortunately, Plymouth Community Food Pantry's Executive Director, Erin Kennedy, recognized and responded to this concern.

Plymouth Community Food Pantry received a grant in the amount of \$2,200 from the Bristol Brass General Grant Fund at Main Street Community Foundation to purchase

food for pantry shoppers with special nutritional needs. For example, low sugar items have been stocked for individuals with diabetes, and low salt items have been purchased to accommodate the dietary guidelines recommended for people who have high blood pressure or heart disease. Kennedy stated, "The grant has allowed food pantry shoppers with special dietary needs to have equal access to nutritional food. The grant also encouraged local donors to give items that may help people struggling with diabetes or heart disease. Many individual donors were inspired to give healthful options to help their neighbors."



The Plymouth Community Food Pantry serves the residents of Plymouth, Terryville and Pequabuck. By year end 2013, the pantry had served a total of 563 individuals and distributed a total of 117,890 pounds of food.

The Plymouth Community Food Pantry provides food and referrals to other social service agencies to those in need. The staff and volunteers are dedicated to working in and with their community to end hunger, its causes, and its effects.



Christian Arndt Scholarship
Angel Katiewicz

E. Bartlett Barnes Journalism Award
Amy Ozga

4 Burns St. Joseph/St. Paul Scholarship
Zachary Jones
Ashley Kosikowski

Sid Bernard Memorial Art Scholarship
Amy Ozga

Peter and Marjorie Bossi Scholarship
Nicole Jacques

Bowerman Scholarship
Emily Spinelli

Bristol Lions Club F. Fred Soliani Memorial Scholarship
Natalia Korpanty

Bristol Police Union Scholarship
Alice Diaz

Bristol Yale Scholarship
Bethany Cucka
Adaliss Rodriguez

Burlington Lions Charities Scholarship
Alec Nelson
Brandon Smiley

Conn Acoustics Scholarship
Kara Baillargeon
Kayla Maciejewski

Peg Coughlin Nursing Scholarship
Laura Quilter

Richard A. DellaVecchia Scholarship
Evan Dawidowicz
Rebecca Klem

Karen Finder Scholarship
Khalid Mohamed

Carolyn Fisher Scholarship
Timothy King

Andrew and Murielle Giacomini Scholarship
Allison Owsianko

Dorothy Ives Award
Gabrielle Myska

Grace & Norma Joy Scholarship
Breanna Gagnon

Keating-Monaghan Memorial Scholarship
Madison Bloom
MaKayla Bloom
Justin Bolduc
Caitlyn DiAngelis
Jacob Drewniak
Sam Gaughan
Anabella Halt
Matthew Harkey
Devon James Dawson
Sotirios Kavouras
Thomas Lalona Jr.
Ryan Martin
Peter Miller
Makendra Moward
Christian Peterson
Derek Schinkel
Noah Stevens
Julie Swicklas
Julian Vinvelas

Lena M. & Peter I. Korotie Scholarship
Madison Shea

Vincent T. Kozyrski Scholarship
Rebecca Klem

Sean Landry Memorial Basketball Scholarship
Elizabeth Haylette

Doris Lazorik Memorial Scholarship
Alexandra Peabody

Leger Initiative for Education Fund
Alice Diaz

Dave Lepore Journalism Scholarship
Olivia Cyr

Theresa MacCallum “Great Kid” Scholarship
Joe Gambardella
Rachel Proffitt

Nicholas P. Maglio ACE Fund
Natalia Korpanty

Malerbo Memorial Scholarship
Pia Barlotta
Jaymie Bianca
Hannah Cifone
Bianca DiLernia
Jonathan Hylan
Kimberly Hylan
Zachary Jones
Adam Levesque
Morgan Middleton
Andrew Owsianko
Andrew Pahl
Amethyst Peterson
Paul Wiecki

Elizabeth I. and Louis J. Matt Medical Scholarship
Chelsea Santa Lucia

Robert E. & Angeline P. McCormack Scholarship
Sofia Gonzalez

McMaster-Moulthrop Scholarship
Eric Aldieri
Shelbi Burns
Sean Heiser
Alexandra Peabody
Ryan Rathke
Shayna Youman

Ken E. Micloskey Award
Timothy King

NESMA Scholarship
Tristan Petit

AJR Nocera Memorial Scholarship
Rebecca Klem

Scott W. Organ Student-Athlete Scholarship
Silas Brooks

Estelle Delano Peterson Scholarship
Angel Katiewicz

Plainville Blue Dolphins Scoreboard Fund
Samantha Bradley
Jennifer Heslin

Plymouth Community Club Scholarship
Holly Luksic

Alice C. Pulsifer Memorial Scholarship
Alexandra Peabody

Radcliff Family Education Fund
Bethany Cucka
Maria Hoppe
Anastasia St. Hilaire
Ivy Yung

Radcliff Plainville High School Fund
Vincent Mullin
Alexis Rodriquez
Charles Romanow

Louis J. Rascoe Scholarship
Timothy King

Douglas Roland Aid for the Trades Scholarship
Evan Dawidowicz

Clement J. Roy Scholarship
Morgan Goodrich

Southington Observer/StepSaver Scholarship
Rebecca Klem

St. Matthew School Scholarship
Aaron Matthews

Jay & Elizabeth Tyrrell Scholarship
Amy Ozga

Peggy Ann Walsh Memorial Scholarship
Breanna Gagnon
Catherine Lafreniere
Patrick Weglarz

Kristen Warner Scholarship
Rebecca Klem

John Whitcomb Scholarship
Morgan Goodrich

Yarde Metals Memorial Scholarship
Jamie Corda
Katharine Graham
Richard Lupo
Ryan Lupo
Leah Miller
Brittney Murphy
Alissa Rogers
Victoria Russo

General Competitive Grants
March 31 Application Deadline
Competitive grants are made to eligible community organizations for future, planned expenditures and not to cover operating deficits or previously incurred obligations. Preference is given to an organization if the program/project:

- Responds to changing or emerging needs of the community;
- Leverages or generates other funding resources;
- Promotes collaboration among nonprofit agencies without duplication of efforts;
- Enhances an existing program to encourage sustainability.

The Foundation’s Distribution Committee, a volunteer group of appointed community representatives, recommends all grant decisions for final approval by the Foundation’s board of directors. Grant decisions are made in June.

Women & Girls’ Fund
September 30 Application Deadline
The Women & Girls’ Fund mission is to make it possible for women and girls to improve the quality of their lives. Competitive grants are made to organizations that align with this mission and serve females in the towns of Bristol, Burlington, Plainville, Plymouth, Southington and Wolcott. The funding focus seeks to assist women and girls to obtain skills and competencies to develop their potential and improve the quality of their lives. In addition to the programmatic focus on women and girls, preference will be given to proposals that identify ways the organization will build capacity as a tool for sustainability.

The Women & Girls’ Fund Advisory Board recommends all grant decisions for final approval by the Foundation’s board of directors. Grant decisions are made in December.

2013 scholarship recipients were honored at the Foundation’s Scholarship Reception held on June 12, 2013 at Hawk’s Landing Country Club.



Plainville Community Fund
March 15 Application Deadline
The Plainville Community Fund was established by a group of community leaders in early 2006 as an endowed fund to create an additional resource for charitable projects and programs that benefit the Plainville community. Competitive grants are made to organizations for projects that will enhance the quality of life for residents in Plainville.

The Plainville Community Fund Advisory Board recommends all grant decisions for final approval by the Foundation’s board of directors. Grant decisions are made in June.

Make A Mark Region 10 Enrichment Fund
Application Deadline Varies
The Make A Mark Region 10 Enrichment Fund is committed to sustaining and extending the excellence of the Region 10 School District by providing a source of funding for expanding educational opportunities that cannot be funded at a meaningful scale through the regular school district’s budget. Grant applications can be submitted by teachers, administrators, guidance counselors, students or other school personnel for projects that demonstrate creativity and innovative instructional practices that will enhance the learning of students.

The Make A Mark Advisory Committee recommends all grant decisions for final approval by the Foundation’s board of directors.

Scholarships
Application Deadline Varies by Scholarship
The Foundation administers over 60 named scholarship funds, each with different application criteria requirements. The list of available scholarships is posted annually on the Foundation’s web site at www.mainstreetfoundation.org by January 15. Scholarships are available at elementary, secondary and higher education levels. Most award decisions are made in May.



Community Leadership

.....

The foundation’s community leadership efforts, also known as “Money in Motion”, address a broad range of community goals. We identify community opportunities and support meaningful dialogue on issues affecting the towns we serve. We convene community members, monitor and assess changing needs, locally and beyond and propose action on critical concerns. In this way, we are able to develop collaborative solutions to meet emerging needs and provide support to what matters most to the people who live and work in the cities and towns of this region.

.....

Increasing Awareness of Technical-Based Career Pathways

.....



Main Street Community Foundation's Board of Directors is setting new directions in community leadership through the Foundation's "Money in Motion" initiative.

A subcommittee of the Board works in collaboration with Foundation staff to identify emerging community issues and develop collaborative solutions with essential community partners. The first issue selected by the Board was to increase awareness of technical-based career pathways in order to increase employment opportunities within the local community.

A MSCF Board subcommittee convened business owners and professional associations to gain an in-depth understanding of their needs and current initiatives in the area of technical-based education. The subcommittee also convened superintendents and other school representatives from all local school districts, as well as guidance and career counselors, to discuss current programs and future opportunities. All groups were in agreement that students have not been as exposed to careers in manufacturing and other technical fields as they could be.

Manufacturing companies are realizing that they cannot assume the educational or political systems will address the needs of the manufacturing industry to develop a skilled pool of candidates for entry level jobs, or train incumbent workers to learn more skills for advanced manufacturing careers. They are learning that they need to take responsibility for training and developing their own workforce.

Over the last 30 years, a conventional belief has developed that factories are dirty, smelly places no one should aspire to work in – and that a manufacturing job is a dead-end career. Technical education classes were cut from school budgets. The high school curriculum became focused on getting kids “college ready”, which does not suit the needs of all students. There was no longer a path for kids with incredible mechanical or technical skills to pursue a technical-based career if they were not able to attend college. As low cost

labor became readily available overseas, companies began to outsource manufacturing jobs in Asia, South America, and other places throughout the world. As companies reduced or ceased operations in the United States, high unemployment rates and a sharp reduction of tax revenues had a negative impact on the economy. Local communities suffered the consequences. The pool of skilled, American factory workers quickly began to shrink as they began to pursue earning opportunities in other industries.

However, the economic advantage of manufacturing overseas is rapidly decreasing. Wages have tripled and quadrupled in Asia, and there is a growing middle class that has higher expectations for earning potential and labor conditions. The cost of shipping to and from foreign countries is also steadily increasing. More significantly, the intellectual property rights are often ignored and patents are routinely violated. Companies pour a tremendous amount of time, effort, money, and labor into product research and development. There is often no legal resource when patent laws are broken in China, and American companies need to protect their investments.

According to Michael Brault, Vice President of Operations at Ultimate Wireforms Inc, and a current Director and Money in Motion committee member at Main Street Community Foundation, “The paradigm that U.S. manufacturing is dead, is simply false and needs to be replaced with a new paradigm that accurately reflects today’s reality. Modern manufacturing companies are largely state of the art, very clean facilities that are heavily dependent on automation and computer technology. The people running the machines are highly skilled, competent, and valued workers. The average salary for skilled manufacturing jobs today is \$76,000 to \$80,000 per year, and the worker is not saddled with a \$100,000 student loan debt.”

- The projected impact of this leadership initiative is to:**
- ▶ provide high quality technical education opportunities
 - ▶ lower unemployment in our local communities
 - ▶ fill jobs in critical industries that are experiencing shortages
 - ▶ attract new businesses, diversify the state’s economy and expand the tax base
 - ▶ enable local manufacturing businesses to be competitors in the global marketplace

By working together, community partners will put “money in motion” by enabling people to make money, invest money, and spend money in their local communities. ◀

Grant Supports Educators’ Learning of STEM Related Careers

In April 2013, eighteen guidance and career counselors representing every high school in Bristol, Burlington, Plainville, Plymouth, Southington, and Wolcott attended a workshop at the Connecticut Center for Advanced Technology (CCAT) in East Hartford funded by the Main Street Community Foundation.

The all-day workshop focused on STEM (science, technology, engineering and math) and manufacturing related careers and education in Connecticut. This professional development opportunity was made possible through the Foundation’s Money in Motion initiative. Since mid-2012, a subcommittee of Main Street Community Foundation’s

Board of Directors has committed themselves to exploring ways to alleviate the shortage of skilled technical workers in our communities, as well as enhance the success of students pursuing post-secondary educational opportunities. The Money in Motion subcommittee has joined with other individuals, groups, and businesses to engage in activities to help address key issues in the

communities served by the Foundation. David Gagnard, Technology Education Teacher at Plainville High School who attended the April workshop stated, “It is apparent that the Foundation is committed to the current and future success of Connecticut’s workforce.”

To specifically address the perception of manufacturing careers, and the education needed to be successful in one, Main Street Community Foundation funded the CCAT-led workshop for area guidance and career counselors so they could bring pivotal information on careers and education back to their students and school districts. The pre- and post-workshop evaluation survey results were astounding;



they showed that the guidance and career counselors did take many things away from the course in terms of STEM related careers. “This was incredibly valuable experience. Knowing there is such a demand in the manufacturing industry, and there is such a clear and available pathway into it is a real eye opener,” stated Larry Hochman, Career Counselor at Bristol Eastern High School. ◀

Addressing the Needs of Children and Families in Our Communities

Main Street Community Foundation has taken a leadership role in improving communities by identifying and responding to the needs and challenges faced by local children and families.

Main Street Community Foundation cofunded a study, which was conducted by a New Haven-based research and advocacy group, Connecticut Voices for Children. In November 2013, the Foundation hosted a presentation, “A Picture of Children and Families in Our Communities: Addressing Needs and Next Steps.” Connecticut Voices for Children provided a snapshot of the emerging problems and trends among residents in the towns served by the Foundation, and how they compare to the state of Connecticut’s overall population. The study analyzed data related to early care and education, family economic security, health, housing, population demographic, and school discipline.

Findings included:

- The unemployment rate in Bristol, Plymouth, and Wolcott is higher than the state average.

- 12 percent of Bristol children live in poverty, compared to 10 percent in Plainville, 7.5 percent in Plymouth, 4 percent in Southington and Burlington, and 2.5 percent in Wolcott. The statewide average is 12.6 percent.
- The percentage of students in 3rd Grade reading at or above goal is lower in Bristol (46.1 percent) and Plainville (53.7 percent) than the state (57 percent).
- At 41 percent, Bristol has the highest percentage of births to mothers enrolled in the state’s HUSKY insurance program for low-income infants and mothers. In Plymouth, the rate is 33.5 percent; in Plainville, 27 percent; in Southington, 24 percent; in Wolcott 23.5 percent; and in Burlington, 14 percent.
- Mirroring CT, all six towns are facing an aging workforce and employers are struggling to find enough skilled workers.

Communities, individuals, and service providers can use the study for program planning, evaluation, and advocacy. A complete copy of the presentation is available on the Foundation’s website, www.mainstreetfoundation.org.

Stewardship of Assets

The role of the Main Street Community Foundation as a steward of permanent assets provides a unique service to the community. Each of the funds listed in this report were established by a donor with a very specific purpose in mind. Safeguarding assets in perpetuity to honor donor intent is a responsibility we uphold every day. Administered prudently and thoughtfully, endowments will continue to provide a stable source of funding to projects, programs, and organizations in the Foundation’s service area. All financial policies instituted by the Foundation are cornerstones of that prudent stewardship.

DONOR ADVISED FUNDS
These funds allow donors to participate actively in grantmaking by making grant recommendations to the Foundation's Board of Directors.

Tom & Melanie Barnes Family Fund	2004
John Brozinski and Anne Povilaitis Pulmonary Rehabilitation Fund.....	2003
Caiaze Family Charitable Fund	2013
George & Maureen Carpenter Family Charitable Fund.....	2013
Clement Family Fund	2010
Denorfia Family Charitable Fund.....	2003
Dumont Family Charitable Fund.....	2000
Cheryl Dumont-Smith Community Fund.....	2007
Pattie & Bill Dunn Charitable Fund.....	2011
Fiondella Fund	2001
Terry & Marguerite Fletcher Family Fund	2007
Furey Family Charitable Fund	2005
Greater Bristol Chamber of Commerce Fund.....	2000
Hamzy Family Charitable Fund.....	2010
Ercole and Pamela Labadia Family Charitable Fund	2001
John & Sandra Leone Family Charitable Fund.....	2008

“No one has ever become poor by giving.”
— Anne Frank

Muncy/Smith Family Fund	2007
Smith Family Charitable Fund	2004
The Technical Education Fund	2005
Tim and Mary Walsh Charitable Fund.....	2011
Zomick Family Fund.....	2006

AGENCY ENDOWMENTS
These funds provide nonprofit organizations a full range of endowment management services.

American Clock & Watch Museum, Inc. Fund	1999
Bristol Hospital Development Foundation Fund.....	1999
Bristol Boys and Girls Club Endowment Fund.....	2004
Burlington Historical Society Fund.....	2008
Burlington Land Trust, Inc. Fund.....	2007
Burlington Library Association Fund.....	1999
Environmental Learning Centers of CT, Inc. Fund.....	1999
Plainville Affordable Housing Corporation Fund	2000
Plymouth Library Association Fund.....	1999
St. Andrew Mission Endowment Fund.....	2009
Tunxis Community College Fund	2000
Tunxis Community College II Fund.....	2004
The Bristol Career Center of Tunxis Community College Endowment Fund.....	2001
The Bristol Career Center of Tunxis Community College Endowment Fund II.....	2004
United Way of West Central CT, Inc. Fund.....	1999
The Wheeler Clinic/Dennis Keenan Fund.....	1999

DESIGNATED AND PROJECT FUNDS
These funds provide donors the opportunity to designate support for a specific charitable organization. If the named charity ceases to exist, another organization with a similar purpose is selected by the Foundation's Board of Directors to assure their purpose for giving will be honored in perpetuity.

Bradley Henry Barnes Fund for the Southington YMCA transferred in	2011
Carlyle F. Barnes Memorial Chapel Trust transferred in	2007
Hap Barnes Fund for Fire Safety and Prevention.....	2002
Hap Barnes Fire Safety Trailer Fund.....	2012
Bristol Eastern High School Athletic Fund.....	2012
Bristol Sports Hall of Fame Fund (BSHOF)	2005
Julius D. Bristol Trust transferred in	2007
City of Bristol Treasurer's Fund for Financial Awareness.....	2012
Connecticut Quilt Registry Legacy Fund.....	2002
Estela Wilderness Education Fund.....	2012
Friends of Bristol Parks and Recreation Fund.....	2013
Tyler James Gingery Memorial Fund.....	2009
Edward Ingraham Fund.....	2011
Inside Rebecca's Backpack Fund	2006
Kristen's Wishes Fund.....	2007
Charles Kushlan Memorial Fund transferred in	2006
Bob and Carol Messier Family Fund	2008
Eva M. Pierce Memorial Charitable Fund.....	2008

Connecticut Quilt Project of the Connecticut Historical Society	
Environmental Learning Centers of Connecticut (ELCCT) for camperships, program development, and trail maintenance	
Bristol Boys & Girls Club and Family Center, to provide summer camp experiences for Bristol youths	
Southington Community Services for school supplies, summer school, or other educational opportunities	
Southington Community Services "Wishes" for Youth	
Bristol Boys and Girls Club Youth of the Year Award	
Bristol Business Education Foundation mini-grant program	
Meals for the Needy, Meals on Wheels, St. Vincent DePaul Society of Bristol, the Prudence Crandall Center, The Cancer Center at Bristol Hospital	

Samuel Goodsell Park and Playground Fund.....	2013
Sky Bight Foundation Fund for the Bristol Boys & Girls Club	2011
Endowment for the new Bristol Boys & Girls Club and Family Center facility	

FIELD OF INTEREST FUNDS
These funds allow donors to support a broad category of need such as the arts, healthcare, education, environment or a geographic area. Grant recipients are selected by the Foundation's Distribution Committee.

Bradley Henry Barnes & Leila Upson Barnes Memorial Trust transferred in	2004
Fuller and Myrtle Barnes Fund for Education.....	1998
Becker Family Fund.....	1996
Sid Bernard & Ed Miller Children's Fund for the Visual Arts.....	2013
Bristol Board of Education Immediate Response Fund	2005

Bristol Talks Teal Fund	2013
Burlington Bell Community Fund.....	2011
Calvanese Foundation Green & White Fund for Behavioral Health	2013
Ciccarelli-Vitale Community Advancement Fund.....	2001
Dan Cistulli Memorial Music Award	2004
John and Gloria DiFrancesco Fund for Women and Girls	2011
Karen DuCotey Fund for Kids	2011
Margaret Haberman Memorial Fund for Music.....	2010

Barbara Hackman Franklin Fund for Women.....	2011
Jaspersohn Family Memorial Fund.....	2001
Paige Wartonick Laferriere Memorial Fund.....	2001
Leading Ladies Immediate Response Fund.....	2010
Main Street Children's Fund	2006
Make a Mark Region 10 Enrichment Fund.....	2009
Malerbo Children's Field Maintenance Fund.....	2005
Elizabeth I. and Louis J. Matt Animal Protection Fund	2006
Merriman Family Fund	2000

JoAnn & David Mills Family Fund	2013
James R. Parker Trust transferred in	2002
Plainville Community Fund	2006
Plymouth Century Club.....	2006
Holly Scanlan Memorial Fund	2013
Douglas and Noreen Schumann Special Interest Fund.....	1998
Werner Family Fund	2000
Women & Girls' Fund	2001

▶ For a full description of each named fund, visit www.mainstreetfoundation.org

SCHOLARSHIP FUNDS

These funds enable a donor to establish a named fund for any level of education. Donors may designate a particular school, field of study and select eligibility criteria.

Christian Arndt Scholarship	2006
E. Bartlett Barnes Journalism Award	1999
Sid Bernard Memorial Art Scholarship	2009
Sylvia Bodak Memorial Scholarship	2001
Peter and Marjorie Bossi Educational Scholarship	2003
Bowerman Scholarship	2008
Bristol Boys & Girls' Club Schulman Fund	2000
Bristol Lions Club F. Fred Soliani Memorial Scholarship	2008
Bristol Police Union Scholarship	1999
Bristol Yale Scholarship	1999
Burlington Lions Charities Scholarship	2000
4 Burns Scholarship – St. Joseph/St. Paul	2000

Conn Acoustics Scholarship	2006
Peg Coughlin Nursing Scholarship	2000
Richard A. DellaVecchia Scholarship transferred in	2002
Karen Finder Scholarship	2003
Carolyn Fisher Scholarship Fund transferred in	2003
Andrew and Murielle Giacomini Scholarship	2003
Azilda Hebert Music Scholarship Fund	2000
Grace & Norma Joy Scholarship Fund	2008
John Kalinoski Scholarship Fund transferred in	2004
Keating-Monaghan Memorial Scholarship Fund	2008
Lena M. and Peter L. Korotie Scholarship Fund	1997
Vincent T. Kozyrski Scholarship Fund	2010
Sean Landry Memorial Basketball Scholarship Fund	2008
Doris Lazorik Memorial Scholarship	1997
Leger Initiative for Education (L.I.F.E.)	2005
Dave Lepore Journalism Scholarship	2003

Thérèse MacCallum "Great Kid" Scholarship Fund	2005
Nicholas P. Maglio ACE Fund	2011
Main Street Community Foundation Scholarship Fund	1997
Malerbo Memorial Scholarship Fund	2005
Elizabeth I. & Louis J. Matt Medical Scholarship	2007
Robert E. & Angeline P. McCormack Scholarship	2002
McMaster Moulthrop Scholarship Fund	1999
Ken Micloskey/Dorothy Ives Awards	2002
Al and Joan Monico Scholarship Fund	2013
NESMA Scholarship Fund	2010
AJR Nocera Memorial Fund	2007
Scott W. Organ Student-Athlete Scholarship Fund	2000
Ralph Papazian Memorial Scholarship Fund	2013
Estelle Delano Peterson Scholarship	2003
Dorothy Dewey Picard Scholarship Fund	1999
Plainville Blue Dolphins Scoreboard Fund	2008
Plymouth Community Club Scholarship transferred in	2003

► For a full description of each named fund, visit www.mainstreetfoundation.org

SUSTAINABILITY FUNDS

Sustainability Funds strengthen the Community Foundation's role as a funder, a community leader, convener and advocate.

Barnes Group Inc. 150th Anniversary Fund	2007
Main Street Community Foundation Endowment Fund	2000
Dave and Edith Scarritt Fund	2004
Yarde Metals Community Support Fund	2005

Radcliff Family Education Fund	2002
Radcliff Plainville High School Fund	2006
Louis J. Rascoe Scholarship	2005
Douglas Roland Aid for the Trades Scholarship Fund	2009
Clement J. Roy Scholarship Fund	2012
St. Matthew School Scholarship Fund	2000
Jill Lynne Shackett Educational Scholarship Fund	2013
Lawrence (Larry) Selza Memorial Scholarship Fund	2010
Glo Sessions Fund for Art Education	2012
Southington Observer/Step Saver Scholarship Fund	2005
Jay W. & Elizabeth M. Tyrrell Scholarship Fund	2011
Peggy Ann Walsh Memorial Scholarship Fund	2011
Kristen Warner Scholarship Fund	2004
John Whitcomb Scholarship Fund	2001
Yarde Metals Memorial Scholarship Fund	2005

UNRESTRICTED COMMUNITY FUNDS

These funds are flexible and responsive to emerging and changing community needs. The Foundation distributes grants from these funds where they are needed most.

Wally Barnes Fund for Community Leadership Initiatives	2013
Bristol Brass General Grant Fund	1998
Bristol Savings Bank Fund	1996
Angela & Al Caruso Family Charitable Fund	2006
Ronald F. and Emilie P. Duhaime Family Fund	2003
Formagioni-Lodovico Family Fund	2009
Jim & Eleanor Frawley Community Fund	2010
Gnazzo/Reidy Charitable Fund	2000
Edward W. and Audrey K. Mink Memorial Fund	2000
Tedesco-Gallant Charitable Fund	2005
Turkus Family Fund	2000



Bradley Henry Barnes and Leila Upson Barnes

The Bradley Henry Barnes & Leila Upson Barnes Memorial Trust

Bradley Barnes was devoted to the community of Southington. He was a trustee of Bradley Memorial Hospital, and served on the Southington Club, YMCA, and Chamber of Commerce. When he passed away in 1973 (his wife, Leila, had died 21 years earlier), Bradley cemented his legacy in Southington when he left the charitable Bradley Henry Barnes & Leila Upson Barnes Memorial Trust, now worth \$18 million. It was transferred to the Main Street Community Foundation in 2004.

For the past 40 years, funding was directed only to Bradley Memorial Hospital, now the Hospital of Central Connecticut. "When the hospital joined a larger network, Trust language required us to explore fresh opportunities," explained Susan D. Sadecki, Main Street Community Foundation President & CEO.

Given the Barnes' commitment to health care, Sadecki (a former health care executive) commissioned consultant Karen Horsch of New Hampshire to research and write "A Study of Community Health and Healthcare Needs" for Southington. The report is available on the Foundation's website: www.mainstreetfoundation.org. "We are following Bradley Barnes' clear directions," stated Sadecki.

Horsch noted that Southington residents urged the community to address the following:

- Accessibility and affordability of health care
- Services/programs to address substance abuse and mental health needs
- Supports to maintain the health of, and to meet the health care needs of, an aging population

- Better integrated health care
 - More community education about existing services
- Using the study's results, the Main Street Community Foundation issued the Trust's first-ever request for proposals to selected non-profits already focusing on the areas identified in the study. "We focused on capital projects in health care to support existing programs," reported William J. Tracy, Jr., Chair of the Trust Advisory Committee and former Chair of the Main Street Community Foundation's Board of Directors.

The first three grants under the new distribution format were celebrated at a ceremony held at the Barnes Museum. \$635,000 was awarded for three capital projects, including one at the hospital:

- \$300,000 to the Southington YMCA, to purchase and install an elevator that would enable people to use the swimming pool;
- \$185,000 to Central Connecticut Senior Health Services, to implement a new medical records system;
- \$150,000 to the Hospital of Central Connecticut, Bradley Campus, to buy a portable echocardiograph machine with vascular probe.

"I think Mr. and Mrs. Barnes would be very pleased," Sadecki concluded.

“What makes greatness is starting something that lives after you.”

– Ralph Sockman

2013 Burlington Bell Community Fund Advisory Council

Robert Merriman, *Honorary Chairman*
 Janet Schwartz, *Chairman*
 Paul Rochford, *Vice Chairman*
 Sanford Mazeau, *Treasurer*
 Jonathan Schwartz, *Secretary*
 Sanjay Barman
 Robert Caiaze
 Dyrinda Cole
 Tim Forella, *Student Representative*
 Donna Gabel
 Ann Mazeau
 Anne Noble
 Jane Patterson
 Yuko Peters
 Mary Peterson
 Sarah Scheidel McCusker
 Pat Small
 Kristin Sullivan, *Student Representative*

Burlington Bell Community Fund



“We had a fabulous year – local people were very generous in donating to the Fund and we were able to award more grants and impact more lives in 2013 than we thought we could!” shared Janet Schwartz. The Burlington Bell Community Fund is an endowed fund at Main Street Community Foundation created to provide a permanent source

of funding for charitable projects and programs that will enhance the quality of life for Burlington residents. The bell, donated to the citizens of Burlington by long-time resident Bob Merriman, stands as a symbol for this community fund.

An annual fundraiser was held at K.C. Dubliner with a silent auction and dancing. Proceeds from the Burlington Road Race were also donated to the Burlington Bell Community Fund. As a result of the community’s support, generosity, and participation in the Fund’s events, a total of \$2,500 was awarded in grants to the Burlington

Public Library, the Burlington Food and Fuel Bank, and the Activities Center.

On September 21st, a “Thank You Soiree” was held at Camp Chase to thank donors for all of their support. Established in 2011, the fund has already made a significant impact on the quality of life of many Burlington residents. ◀



The Burlington Library Association receives a grant to support a book back pack program.

The Plainville Community Fund

2012-2013 Plainville Community Fund Advisory Council

Dolly Chamberlin, *Chair*
 Peg Matteo, *Vice Chair*
 Jesse Cavallaro, *Treasurer*
 Lynn Davis, *Secretary*
 Helen Bergenty
 Kenneth Gnazzo
 Robert E. Lee
 Lisa Melninkaitis
 William Petit, Sr.
 Richard Piotrowski
 Robyn Poulos
 Byron Treado
 Jim Welch



Tulips and daffodils popping out of lawns, increasing hours of daylight, and warmer temperatures usher in the spring season.

In the Plainville community, the signs of spring also reveal that the Plainville Community Fund’s Distribution Committee is hard at work.

The Plainville Community Fund, established in 2006 by a dedicated group of community leaders as an endowed fund at Main Street Community Foundation, begins a new funding cycle each year in mid-March, when grant proposals are due. Eight members of the Plainville community serve on the fund’s Distribution



Students and their families participating in Family Math Night at Toffolon Elementary School in Plainville.

Committee. Current members include individuals who have been life-long citizens of Plainville; graduates of Plainville High School; professionals who have served the needs of their neighbors through their locally based careers; and parents who have raised their families in the community. In 2013, Plainville Community Fund Distribution Committee members were: Peg Matteo

(Chair), Deanna Gelt, James Lux, Tabitha Manafort, Lisa Mandeville, Kelly Perrotti, Richard Piotrowski, and Robyn Poulos.

Each year, the Distribution Committee receives approximately six to eight grant proposals. Each grant cycle, the committee works diligently to identify and address Plainville residents’ needs - to keep the community strong as it continues to grow and evolve. Most of these dedicated volunteers have served on the committee since the first distribution cycle in 2008 and have spent hours of their time reading, analyzing, and evaluating grant proposals.

In November of 2013, an additional opportunity to submit grant proposals was extended to the community. Allocated funds were still available for distribution after the spring grant cycle disbursements. In 2013, a total of \$7,000 was awarded by the Plainville Community Fund at Main Street Community Foundation for charitable projects and programs that will enhance the quality of life for the Plainville community. ◀

Make A Mark Region 10 Enrichment Fund

2013 Make A Mark Advisory Committee

Dwight Harris, *Chairman*
 Mike Scheidel, *Vice-Chairman*
 Theresa Foley, *Secretary, Board of Ed member, ex officio*
 Dave Crompton, *Treasurer*
 Emma Avery, *Student Representative*
 Jay Cizeski, *Student Representative*
 Stephanie Cowger
 Kelly Fecteau
 Art Funk
 Megan Mazzei
 Connor McNaboe, *Student Representative*
 Tania McNaboe
 Emily Nepomuceno, *Student Representative*
 Bill Tracy
 Shelley Watts
 Alan Beitman, *Superintendent of Region 10 Schools, ex officio*
 Michael Criss, *Harwinton 1st Selectman, ex officio*
 Susan Sadecki, *Main Street Community Foundation, ex officio*
 Ted Shafer, *Burlington 1st Selectman, ex officio*



The Make A Mark Region 10 Enrichment Fund at Main Street Community Foundation is committed to sustaining and extending the excellence of the Region 10 School District, serving the communities of Burlington and Harwinton. The fund was established in 2009 to expand educational opportunities that cannot be provided by the regular school district’s budget. The permanently endowed fund impacts a student population of 3,000.

The Make a Mark Advisory Committee solicits grant applications from students,

staff, and faculty for projects that demonstrate creativity and innovative instructional practices to enhance the learning of students. Continued growth of the fund can be attributed to donations from individuals, families, and businesses, as well as fundraising events that promote a united sense of community among Harwinton and Burlington residents in support of their shared school district.

In 2013, community fundraising efforts included the 3rd Annual Community Chess Tournament, the Johnnycake Music Fest, and

an appeal. Students and families are encouraged to honor their favorite teachers with a tax-deductible donation to the Make A Mark Region 10 Enrichment Fund throughout the year.

Six grants were awarded in 2013, totaling \$2,920. Notably, this was the first time that a grant was awarded to students, rather than teachers, for a student-led project. Kaylee Viets and Wesley Coughlin, students at Lewis Mills High School, received funds to purchase multiple copies of books for the book club they started.

Additionally, the Make a Mark Enrichment Fund and the James R. Parker Trust at Main Street Community Foundation partnered to provide a grant for “Rachel’s Challenge”, a program at HarBur Middle School that will serve as a catalyst for creating a culture of kindness in the school community. The Region 10 Make A Mark Enrichment Fund also provided grants for the purchase of robotics, dance, music, and e-reader materials in 2013.

Grants awarded from the Make a Mark Region

10 Enrichment Fund will continue to provide creative learning opportunities to enhance the educational experience for students and teachers in Region 10. ◀



Region 10 students at an ebook club meeting.



The Women & Girls' Fund (WGF) had a lot to celebrate in 2013.

A record amount in grant making, an outstanding Wonder of Women (WOW) event and a newly formed Community Engagement Committee, which all embrace the vision of the Fund - to improve the quality of life of women and girls in the communities of Bristol, Burlington, Plainville, Plymouth, Southington and Wolcott were a few of the highlights of 2013.

The celebrating began with the Fund's Annual Meeting in January and concluded with the December 2013 announcement of **\$30,760 in grants awarded to 12 organizations and programs** serving women and girls in our local communities. The Fund awarded grants from proceeds from the annual WOW event, as well as two named funds: the Barbara Hackman Franklin Fund for Women and the John & Gloria DiFrancesco Fund for Women and Girls. The named funds were established in 2011 and annually provide distributions to support initiatives identified by the Fund.

In April 2013, nearly 400 people joined the Fund in celebrating when Grace Killelea, an endearing, inspiring and, perhaps most importantly, funny speaker and champion for women WOW'd the crowd at the 12th Annual WOW event. Advisory Board members Sandi Perillo and EJ Conlin co-chaired the signature event.

Outgoing Chair Pattie Dunn was an amazing leader, and motivated other Advisory Board members to join the initiative of setting a new direction for the Fund. Rebecca Tuttle and Marissa McGee led the newly formed Community Engagement Committee. The Committee focused on growing partnerships throughout the six communities served by the Foundation, as well as the Fund's social media presence. Members were hard at work and many new relationships were formed by bringing individuals, families and businesses together for the betterment of women and girls. ◀

Grant Fosters Senior Women's Wellness and Independence

Central CT Senior Health Services was awarded a \$4,800 grant from the Barbara Hackman Franklin Fund for Women and the Women & Girls' Fund to support Good Life Fitness for Women (GLF). This program allows low income elderly women to receive scholarships to participate in individualized exercise interventions.

These interventions help the target senior population remain independent in their homes and communities. By making exercise programming available – especially to those who can least afford it – seniors can realize improved strength, balance and cognitive function; learn fall prevention strategies; experience social interaction and encouragement; remain active in their communities; and ultimately reduce hospital readmissions or admission to other healthcare facilities.

Rather than a one-size-fits-all approach, participants are given the tools and resources they need to achieve optimal quality of life even if challenged by limitations, disabilities, or chronic diseases. The GLF staff measure the following key

success factors: 1) a decrease in falls, 2) improvements in the assessment testing of overall function in activities of daily living, and 3) a decrease in social isolation.

One client stated that prior to enrolling in GLF for Women, she was unmotivated to be active due to constant pain and discomfort, and usually stayed at home to watch TV or engage in other sedentary activities. She was happy to report, "This has given me an exercise program that challenges me and has me moving and walking comfortably and at a very decent pace. Now I'm on the move every day – it's wonderful! This program really changed my life and improved my overall health." ◀



2013 Women & Girls' Fund Advisory Board

- Patricia B. Dunn, *Chair*
Jeanine Audette, *Co-Vice Chair*
EJ Conlin, *Co-Vice Chair*
Susan Dantino, *Recording Secretary*
Victoria Hickerson, *Treasurer*
Deidre M. Tavera, *Past Chair*
Cathryn Addy, *Member at Large*
Michelle Chapman
Valerie Furey
Kristin Ferguson
Kimberly James
Rita A. Joy
Lisa A. King
Ashley Lodovico
Marissa McGee
Sandra Perillo
Audrey E. Vinci
Carolyn Ziogas
Jarre B. Betts, *ex officio*

Bristol Talks Teal

In the month of September, teal bows adorn fence posts, light posts, trees, and doorways - while lawn signs convey an important message throughout Bristol. All have been placed to raise awareness of ovarian cancer and its symptoms. Tony Lodovico established the "Bristol Talks Teal Fund" at Main Street Community Foundation in his wife's honor in 2013. Judie Lodovico is a twelve year ovarian cancer survivor.

While the fund's primary purpose is to raise awareness of ovarian cancer symptoms, its ultimate goal is to save lives through early detection of the disease. Teal is the color associated with ovarian cancer awareness campaigns, and September has been designated as National Ovarian Cancer Awareness month. The fund's future will also assist individuals who suffer from ovarian cancer and may qualify for, and need, medical assistance they cannot provide for themselves.

Ovarian cancer awareness information is displayed throughout the community on teal ribbons, posters, and lawn signs. "Teal has become the landscape for Bristol for the month of September," Judie shared. The symptoms of ovarian cancer are often vague and /or confused with other conditions, causing most women to find out too late that they indeed have the disease. It is the deadliest of all gynecological cancers and is known as the "silent killer".

Judie received a thank you note from a neighbor who received an early diagnosis and effective treatment for ovarian cancer because she recognized her own symptoms due to the "Bristol Talks Teal" campaign.

The first two years of Turn the Town Teal were financed entirely by the Lodovico Family. However, many people came forward and offered to help. Tony and Judie were reluctant to accept donations at first, but a great number of people from the Bristol community continued to offer their support. The Lodovicos



realized that Turn the Town Teal had already significantly impacted the community – and would have the potential to make an even greater impact if they included other donors in the ovarian cancer awareness campaign.

"The generosity of the people of Bristol motivated us to establish the Bristol Talks Teal Fund. We wanted to pay it forward, to give something back," explained Tony Lodovico, "We felt that it was important to keep the donations in Bristol. We are very proud of the way our community has embraced our attempt to raise awareness of ovarian cancer symptoms to help save women's lives."

We are very grateful to the following donors who supported the 2013 "Bristol Talks Teal" campaign:

- | | |
|------------------------------------|---|
| Eric and Nancy Abrahamson | Dorrie Lowery |
| Laurie Amara | Dale Malvezzi |
| Denise Baron | Linda and Philip Mannarino |
| Barbara Barton | Daniel and Sandy Marseglia |
| Whit and Jarre Betts | John and Sharon Mattas |
| Bristol Custom Colors | Joanne and Kevin McCarthy |
| Catherine Cassin | David and Mary Ann McCarthy |
| Louis and Theresa Cercone | Nancy and James Mead |
| Bea Cerrone | Roger Michele |
| Presentacion Coughlin | Susan and Mark Moreau |
| Country Manor Realty, Inc. | Susan and Richard O'Brien |
| Crown Oil Co., Inc. | Stanley Olejarz |
| C.V. Mason & Co., Inc. | Dominic and Cynthia Perno |
| Joyce DeFelippi | Frank and Marilyn Peters |
| Paul Dellabianca | Dawn Pinkowish |
| Joseph and Denise Dobek | Deborah and John Porriani |
| Emilie and Ronald Duhaime | Jon Pose |
| Maria Formica | Michael and Vivian Positano |
| Funk Funeral Home | Madeline Reardon |
| Debbie Gammon | Donald Rio |
| Gary M. Buchanan Memorial Fund | Carol Roys |
| Max and Sam Gorack | Nancy Rush |
| HairSay Salon LLC | Susan and Ronald Sadecki |
| Harvest Bakery, Inc. | Barbara Sergio |
| Hour Glass Cleaners | Shaffer Company |
| Hubbard's Florist | St. Paul Catholic High School |
| Brian and Aafje Kall | Studio Hair |
| Joan and Warren Kirschner | John and Ann Taylor |
| Sue Kokofsky | The Artificial Flower Shop |
| Wilmar and Joan Lagasse | Gerald and Marsha Tomlinson |
| Edmund and Jo-Anne Lodovico | Tracy Driscoll Insurance & Financial Services |
| Tony and Judie Lodovico | Ultimate Companies, Inc. |
| Anthony and Kimberly Lodovico | Leonard Valentino |
| Michael and Paula Lodovico | Allison Wadonski |
| Michael Lodovico and Wendy Goodwin | Mary and Ronald Wollenberg |
| Alfred Lodovico | |

We gratefully acknowledge the Friends of Main Street that generously supported our 2013 annual appeal.

This annual campaign, overseen by past board member and founder Tom Barnes, provides the necessary administrative financial support to advance the charitable activities of the Foundation to better serve our communities.

In appreciation, a donor and friends reception is hosted annually by a Foundation supporter. In 2013, food, music and nearly eighty Friends made for a joyful August gathering at the gorgeous lake-front home of Bobby Bosco. The reception, hosted by Bobby Bosco, Jennifer Scully, Skip Scully and Susan Scully, gave the Foundation the opportunity to thank its many donors and volunteers, especially all those who support the annual Friends Appeal and believe in the importance of local philanthropy.

On that evening, we also took time to celebrate Bob Merriman on the occasion of his 95th birthday. Complete with cake and singing, Bob, a founder and past board chairman of the Main Street Community Foundation, has rarely missed this annual donor appreciation event.

Sincere gratitude goes out to Tom Wollenberg and TLC Limousine for providing the shuttle transportation for our guests, Joseph Bosco for catering the event, Dawn Nielsen for designing the invitation and Garrett Printing & Graphics for their donation of printing. Special appreciation goes out to Bobby and Jennifer for their generosity and hospitality that made the 2013 Friends Reception a memorable event.

Many thanks to all who support our annual friends appeal and to all donors who value the work of the Foundation.

INDIVIDUAL FRIENDS

Michael and Eileen Adams
Cathryn Addy
Richard and Barbara Alden
Doris Aldieri
Eliabeth Barnes
Harry Barnes
Wallace Barnes and Barbara Hackman Franklin
Sophia and Charles Bauer
Arthur Becker
Kenneth and Mary Benoit
Whit and Jarre Betts
Victoria Biondi
C. David and Judith Bomar
Robert Bosco
Paul and Barbara Brewer
Peter and Trudy Brown
Olga Callender
Richard Caporaso
Catherine and Christopher Cassin
Rosemarie Cassin
Patricia Chapman
Irene and Leonide Charette
John and Nancy Chiero
Raymond and Dorothy Ciechoski
William and Frances Connelly
Richard and Elaine Couture
Peter and Susan D'Addario
Bruce and Yanina Daigle
Kaye Davis
Joseph and Amy DiFazio
Edna Dipietro
Theodore and Diane Donovan
Robert and Theodora Douglas
Cary Dupont
Richard Fetzter
Robert and Carolyn Fiondella
Scott and Karen Fournier
Lillian Fox
Sanita Gingras
Peter and Mary Ann Giola
Donald and Peg Goranson
David and Andrea Graham
Roger and Arlene Grandbois
Wilma and Dennis Hart
Maryellen and Kevin Holden
Kimberly Hostettler
Martin and Katherine Ill
H. Phillips and Ann Jesup
Rita Joy
Dennis and Mary Keenan
Barbara Keiffer
Eleanore and Onufre Klapatch
Ercole and Pamela Labadia
Michael Lambert
Elizabeth and Fergus Lane
Christopher and Leah LaPlaca
Thomas and Geraldine LaPorte
Kim and Richard Larkin
Steven and Donna Lasewicz
Morris and Patricia Laviero
John and Sandra Leone
Lawrence and Eileen Linnetz
Anthony and Judith Lodovico

Harold and Phoebe Lorenson
Laura Maglio
David and Kelly Maikowski
Ralph and Meredith Mann
Alfred Mastrianni
Sanford and Ann Mazeau
Angie McCormack
Edward and Carole McPhee
Richard and Patricia Miller
Townsend and Carol Mink
Craig and Laura Minor
Susan Moore
Susan and Mark Moreau
Arthur and Mary Morenz
Kim and Karen Murphy
Moira and John Myers
Dawn and Eric Nielsen
Thomas and Marie O'Brien
Sally and Terry O'Connor
William and Christine Petit
James and Ann Pryor
Betty Radcliff
Samantha Rajotte
Marilyn Resnick
Barbara Retartha
John and Mary Ellen Riback
Ezra Ripple
Ralph and Linda Roland
James and Kathleen Sayre
Elizabeth and James Scarritt
Jennifer Scully
Mark and Maryann Seleman
Carl and Sharon Sellberg
Abraham and Cipah Shapiro
Debra and Andrew Singleton
Raymond Smialowski
Daniel Smiley
Murdo and Patricia Smith
Carl and Melita Sokolowski
Sara Sonne
Maureen Sonstrom
Lorna Sterling
Donna Storms
William and Angela Stortz
Sharon and Rodger Stotz
Deborah and Raymond Strelau
Ruth Timme
Ann Tracy
Valerie Vitale
John and Rhonda Walker
Marian Whitcomb
Robert and Janet Williamson
Lisa Wilson-Foley
Craig and Barbara Yarde
Mark and Lorna Zammett
Carolyn and Mark Ziogas
David and Stephanie Zomic

FOUNDERS, DIRECTORS AND PAST DIRECTORS

David and Kristen Aldieri
Stephen Allaire and Mary Ruth Connolly
Sherwood and Kate Anderson
Thomas and Melanie Barnes
Mark and Nancy Blum
Bryan Bowerman

Michael and Susan Brault
Todd Burton
Robert and Rebecca Caiaze
Dennis Cleary
Kristine Dargenio
Valerie DePaolo
Val and Susan Dumais
Cheryl Dumont-Smith and Edward Smith
Patricia and William Dunn
David England
Marguerite Fletcher
Barbara and William Fontaine
Arthur and Lillian Funk
Charles and Rosamond Glendon
William and Anita Hamzy
Dwight Harris
Daniel LaPorte
John Letizia
Diane and Raymond Macklosky
Jacqueline and David Merchant
Robert Merriman
Janis Neri
Mark and Monique Peterson
Bonzena Pina
Robyn and Dale Poulos
David Preleski
Jeanne Radcliff
Susan and Ronald Sadecki
John and Susan Scarritt
Susan and Skip Scully
John and Mary Smith
Tracy and Matthew Smith
William and Kim Tracy

CORPORATE/ORGANIZATION FRIENDS

Barnes Group Foundation, Inc.
Bristol Adult Resource Center, Inc.
Bristol Recovery Club Inc.
C & M Screw Machine Products, Inc.
C.V. Mason & Co., Inc.
Christian Fellowship Center
Connecticut Lighting Center, Inc.
Country Manor Realty, Inc.
Crescent Manufacturing Operating Co.
CWPM
Firestone Building Products Company
General Reinsurance Corporation
Gibbs Wire & Steel Co., Inc.
Greater Bristol Chamber of Commerce Fund
Hamzy Law Firm, LLC
Harry F. Barnes & Carol H. Barnes Family Foundation
Mizzy Construction Inc
New England Spring & Metalstamping Association
Riverside Investment Services LLC
Scott Funeral Home, Inc.
Stafford Plaza, LLC
Terryville Lions Club
Tollman Spring Co., Inc.
The Walt Disney Company Foundation
Webster Bank
Wells Fargo Advisors
William and Thomas Delfino, LLC

We gratefully acknowledge the support of our donors and thank them for their gifts during the 2013 calendar year. If we have inadvertently failed to note your contribution, please let us know so that we may acknowledge it in a future publication.

A.H. Hierl Associates
Eric and Nancy Abrahamson
Ace Wire Spring & Form Company
Michael and Eileen Adams
Cathryn Addy
Aetna Foundation, Inc.
Jane Albert
Richard and Barbara Alden
Leonard and Lois Alderman
David and Kristen Aldieri
Doris Aldieri
Lois Allaire
Stephen Allaire and Mary Ruth Connolly
John and Linda Allen
Pamela Amenta
Anderson, Alden, Hayes, Ziogas & Storm, LLC
Sherwood and Kate Anderson
Anixter, Inc.
AT&T
Jeanine and Michael Audette
Daria Avery
Avon Middle School
B & B Tool Co., Inc.
Joseph and Marilyn Babiarz
Patrick and Patricia Baker
Saumitra and Nasima Banerjee
Sanjay and Martha Barman
Barnes Group Foundation, Inc.
Elizabeth Barnes
Harry Barnes
Thomas and Melanie Barnes
Wallace Barnes and Barbara Hackman Franklin
Denise Baron
Barbara Barton
Sophia and Charles Bauer
Arthur Becker
Stacy Begert
Kenneth and Mary Benoit
Kirsten and Timothy Bergstrom
Mark Bernstein
Robert Bertini
Leonard and Doris Berton
Andrew Betts
Whit and Jarre Betts
Merritt and Judith Bird
Merlanda and Eric Birkenberger
Lucille Bissonette
Mark and Nancy Blum
Adrian Peter Boi Revocable Trust
John and Michele Boccalatte
C. David and Judith Bomar
Robert Bosco
Bryan Bowerman
Marie and Kenneth Bowes
Michael Brault
Nancy Brault
Susan and Michael Brault
Mr. and Mrs. Andrew Brecher
Donald and Patricia Brennan
Paul and Barbara Brewer
Bristol Adult Resource Center, Inc.
Bristol Brass General Grant Fund
Bristol Central High School and Bristol Eastern High School's Class of 1967
Bristol Custom Colors
Bristol Eastern High School Organizations
Bristol Hospital
Bristol Lions Club
Bristol Parks and Recreation
Bristol Pathology Consultants, PC
Bristol Pediatrics
Bristol Recovery Club Inc.
Bristol Rotary Club
Bristol Sports Hall of Fame and Museum
John Brown
Peter and Trudy Brown
Yolanda Brown
Elizabeth Brucker
Janice Bruetsch
Ann and Bozdar Bulovic
Sandra Buonafede Caron
Burlington Chamber of Commerce
Burlington Connecticut Lions Club
Burlington Police Union
Burlington/Delfino Septic Service
Thomas and Diana Burns
Laura Burton
Todd Burton
C & M Screw Machine Products, Inc.
C.V. Mason & Co., Inc.
Robert and Rebecca Caiaze
Calciano & Stern Appraisal Associates
Olga Callender
Karen Calvanese
Canton Indoor Golf Center, LLC
Robert and Maureen Caplette
Richard Caporaso
Kathy Carman
Jordan and Shawn Carr
Lynne Carr
Carrier Home Builders Inc.
Jamie and Cory Cartwright
Jennifer Caruso
Catherine and Christopher Cassin
Rosemarie Cassin
CCOG Women's Health Group
Louis and Theresa Cercone
Steven Champeon
Patricia Chapman
Beryl and Frederick Chard
Irene and Leonide Charette
Stephanie Charlam
Mark and Susan Chase
John and Nancy Chiero
Chippanee Golf Club, Inc.
Christian Fellowship Center
Armann Ciccarelli and Valerie Vitale
Raymond and Dorothy Ciechoski
Dante and Dorothy Cistulli
City of Bristol
CIVITAN Club of Simsbury & Farmington

Susan and Val Dumais
Melanie and Jim Dumont
Cheryl Dumont-Smith and Edward Smith
Patricia and William Dunn
Patricia Dunn
Cary Dupont
George and Jean Dutton
East Coast Lightning Equipment
Elaine and John Eberhard
Esther Eddy
Joanne and David Ellsworth
David England
Kevin Estela
F.J. Chard & Son, Inc.
Family Haircut Store
Farmington Bank
Farmington Valley Trails Council
Christine and Thomas Farrey
Dennis and Catherine Ferguson
Deborah and Paul Ferry
Richard Fetzter
Robert and Carolyn Fiondella
Fiondella Family Trust at the Hartford Foundation for Public Giving
Fiondella Fund
Fiondella Fund II
Amanda Fioretti
Firestone Building Products Company
First Bristol Federal Credit Union
First Niagara Bank Foundation
Michael Flaherty
Marguerite Fletcher
Theresa and Glenn Foley
Barbara and William Fontaine
Maria Formica
Scott and Karen Fournier
Fourslide Spring and Stamping, Inc.
Lillian Fox
Barbara Hackman Franklin
Friends of the Plainville Public Library
Ellen and William Fritz
JoAnn and Bruce Frye
Paula Fulghum
Arthur and Lillian Funk
Funk Funeral Home
Timothy and Valerie Furey
Furey Family Charitable Fund
Lynn Fuselier
Cory and Donna Gabel
Janet Galati
Gallery Salon
Debbie Gammon
Gary M. Buchanan Memorial Fund
Michael and Roberta Gaudette
Joseph Geladino and Nancy Toffolon
General Reinsurance Corporation
John and Teresa Gericke
Rita Gerzanick
Gibbs Wire & Steel Co., Inc.
Lee Giblin
Rand Sean and Michele Gingery
Sanita Gingras
Peter and Mary Ann Giola
Charles and Rosamond Glendon
Ginger Glovna
Gnazzo's Food Center
Valley, Inc.
John and Peggy Clancy
Clarion Production Services, Inc.
Dennis Cleary
David and Donna Clout
Kenneth Coco
Alyssa and Joseph Colasanto
Richard and Janet Colombie
Conn Acoustics Inc.
Connecticut Lighting Center, Inc.
William and Frances Connelly
Amanda Corwin
Presentacion Coughlin
Country Club of Waterbury
Country Manor Realty, Inc.
Richard and Elaine Couture
Stephanie and Dean Cowger
Crescent Manufacturing Operating Co.
David and Eileen Crompton
Noreen and Garry Crosson
Crown Oil Co., Inc.
CT Clinical Nursing Associates, LLC
Ora Curry
CWPM
Robert and Jeanne Dabkowski
Peter and Susan D'Addario
Bruce and Yanina Daigle
Christopher and Lauryn D'Amato
Denise Dance
Susan Dantino
Kristine Dargenio
Kaye Davis
Nancy Dayton
Michele Deeb
Joyce DeFelippi
William Degan
Phyllis and Peter Del Mastro
Paul Dellabianca
Carol Denehy
Lynn Denino-Fahey
Valerie DePaolo and Michele Boisvert
DePaolo Family Foundation, Inc.
Rita Dewyea
Karen Diamantes
Estate of Helen N. DiGiovanna
Joseph and Amy DiFazio
Gloria DiFrancesco
Peter and Martha DiGiovanni
Edna Dipietro
Bob Disantis
Disney EARS to You Fund at the Orange County Community Foundation
Joseph and Denise Dobek
Margaret and Tom Donohue
Theodore and Diane Donovan
Edward Dorgan
Andre D. Dorval, Attorney at Law
Robert and Theodora Douglas
Penny and Steve Driggers
Timothy Driscoll
Emilie and Ronald Duhaime

▶ GIFTS RECEIVED IN 2013

Max and Sam Gorack	KPMG LLP
Donald and Peg Goranson	Edward and Sharon Krawiecki
Lucy Gorneault	William and Myrlene Krock
David and Andrea Graham	Michele Krpata
Roger and Arlene Grandbois	David and Jodi Kryzanski
John and Catherine Grasso	Joanne Kurnik
Donna and Peter Gravlin	David Kushlan
Greater Bristol Chamber of Commerce Fund	LAB Security Systems
Ronald and Fonda Green	Ercole and Pamela Labadia
Green Acres Farm	Robert and Jerrilynn Labas
John and Barbara Greenlaw	Richard Lacey
Barbara Greger	Wilmar and Joan Lagasse
Jan Gyngell	Michael Lambert
HairSay Salon LLC	John and Rosemary Lamberty
Anita and William Hamzy	William Landers
Hamzy Law Firm, LLC	Patrice Landry
Mary Hanink	Elizabeth and Fergus Lane
Janet and Rick Hanscom	Richard and Jocelyn Lanpher
Mark and Carmela Hansen	Christopher and Leah LaPlaca
Patti Harris	Daniel and Gina LaPorte
Harry F. Barnes & Carol H. Barnes Family Foundation	Thomas and Geraldine LaPorte
Harry S. Fisher Elementary School	Kim and Richard Larkin
Wilma and Dennis Hart	Denise and Jim Larson
Harvest Bakery, Inc.	Steven and Donna Lasewicz
Harwinton Consolidated School PTA	Lavendar Fields Day Spa
Harwinton Consolidated School Social Committee	Morris and Patricia Laviero
Kenneth and Nancy Hedman	Donna Lazorik
Matthew and Carolyn Henderson	John Lazorik
Timothy and Victoria Hickerson	Leading Ladies
Casey Hill	Robert Lee
Betty and Kenneth Hintz	Alice Leger
Maryellen and Kevin Holden	Dawn Leger
Paul Holowcayk	Benjamin Legrand
Kimberly Hostettler	John and Sandra Leone
Hour Glass Cleaners	John Letizia
Marcus and Justine Howell	Clare Lindsey
Hubbard's Florist	Clare Lindsey
Brian and Susan Ignatowski	Lawrence and Eileen Linnetz
Martin and Katherine Ill	Alfred Lodovico
Angelo and Georgette Ingellis	Anthony and Judith Lodovico
Dorothy and Edwin Ives	Anthony and Kimberly Lodovico
Lisa Jaspersohn	Ashley Lodovico
H. Phillips and Ann Jesup	Bonnie and John Lodovico
Nancy Jewett	Bonnie and John Lodovico
Carolyn Jodoin	Edmund and Jo-Anne Lodovico
Joe & Kay Calvanese Foundation	Michael and Paula Lodovico
Johnnycake Mountain Associates, Inc.	Michael Lodovico and Wendy Goodwin
Brooke Joiner	Bill and MariaTeresa Lombardi
Rita Joy	Harold and Phoebe Lorenson
Brian and Aafje Kall	Richard and Jennifer Lotstein
Dave Kalstein	Dorrie Lowery
KC Dubliner	LR Enterprises
Dennis and Mary Keenan	Mike Lychock
Barbara Keiffer	M.A.B. Designs
Noreen Kerrigan	Kathryn Macary
Harold Kilby	Diane and Raymond Macklosky
Bryan and Carrie King	Kelley MacLean
Lisa and David King	Dr. Gary Maglio, O.D.
Joan and Warren Kirschner	Laura Maglio
Eleanore and Onufre Klapatch	Richard Maglio
Michael and Carol Klucina	Charles and Winifred Maher
Koehn Enterprises, LLC	Jeffrey and Joyce Maher
Kohl's Department Stores	Karen Maher
Sue Kokofsky	David and Kelly Maikowski
	Malibu Fitness
	Dale Malvezzi
	Manafort Family Foundation
	Ralph and Meredith Mann

Linda and Philip Mannarino
Rose Manton
Fred and Patricia Markowich
Catherine-MacLean Marrow
Daniel and Sandy Marseglia
William and Joyce Martino
MassMutual Financial Group
Alfred Mastrianni
Laura and Paul Mastropolo
Estate of Elizabeth Matt
John and Sharon Mattas
Geraldine Matyczuk
Maximus Foundation
Sanford and Ann Mazeau
David and Mary Ann McCarthy
Joanne and Kevin McCarthy
Angie McCormack
Edward McLaughlin
Linda McMahon
Tania and Brian McNaboe
Edward and Carole McPhee
Nancy and James Mead
Susan Meissner
Janet and Ty Mellon
Paul and Karen Melnick
Jacqueline and David Merchant
Edward Merkl
Nevada Merriman and Joshua Elias
Robert Merriman
Metro Bis
Diana Micari
Micari Financial Group, LLC
Roger Michele
Microsoft
Edward Miller
Richard and Patricia Miller
David Mills
Paul and Christine Mills
Townsend and Carol Mink
Craig and Laura Minor
Barbara Misicka
Mizzy Construction Inc
Modern Mechanical Systems, Inc
Jane Molon
Estates of Alfred and Joan Monico
Mary and Curvin Montgomery
Susan Moore
Gail Moraski
Susan and Mark Moreau
Arthur and Mary Morenz
Margrit Morley
Louise Provenzano
Prudential Foundation Matching Gift Program
James and Ann Pryor
Edward Przygocki
Quilts that Care
Betty Radcliff
Jeanne Radcliff
Radcliff Wire, Inc.
Samantha Rajotte
James Randles and Maryann Ceneviva-Randles
Joe and Karen Raps
John and Frances Raye
Madeline Reardon
Robert Reidy

Renaissance Downtowns
Marilyn Resnick
Barbara Retartha
RGD Technologies
John and Mary Ellen Riback
Constance and Gary Richards
Donald Riley
Mr. and Mrs. Donald Rio
Ezra Ripple
RiSu Martial Arts Academy, LLC
Riverside Investment Services LLC
Sarah Roades
Paul Rochford
Ralph and Linda Roland
Roland Dumont Agency
Law Offices of Jan Carol Rosenthal
Dominick and Ada Rossi
Rotary Club of Plainville
Rotary Club of Southington
Carol Roys
Nancy Rush
Susan and Ronald Sadecki
Gary Santa Maria
James and Kathleen Sayre
Elizabeth and James Scarritt
John and Susan Scarritt
Gertrude and David Schaller
Michael and Christine Scheidel
Margaret Schuster
Jonathan and Janet Schwartz
Marcie Schwartz
Selma Schwartz
Scott Funeral Home, Inc.
Jennifer Scully
Susan and Skip Scully
Mark and Maryann Seleman
Carl and Sharon Sellberg
Barbara Sergio
Anthony and Gloria Serratore
Don and Roxanne Sessions
Donna Sethness
A. William and Marlene Shackett
Karen Shackett
Melanie Shackett
Thomas Shackett
Shaffer Company
Shannon's Diamonds & Fine Jewelry
Abraham and Cipah Shapiro
Sheraton Hartford Hotel at Bradley Airport
Shoptimize.org
Silvana's Day Spa/Salon
Melissa Simonik
The Law Office of Melissa L. Simonik, LLC
Simply Hair
Elizabeth Singer
Debra and Andrew Singleton
Andrew and Barbara Sitek
George and Susan Skarvinko
Janet and John Skovran
Sky Bight Foundation, Inc.
Thomas and Jeanne Small
Beth Smedick
Raymond Smialowski
Susan Smialowski
Dr. Daniel N. Smiley, MD

Dianne and Ron Smith
John and Mary Smith
Matthew and Tracy Smith
Murdo and Patricia Smith
Anita and William Smyth
Carl and Melita Sokolowski
Jeffrey and Sharon Sonenstein
Sara Sonne
Maureen Sonstrom
Southington Country Club
Clark and Cheryl Spencer
Marie Spratlin Hasskarl
St. Paul Catholic High School
Don Stacom and Jeanne Leblanc
Stafford Plaza, LLC
Stanley Golf Course
Starbucks - Bristol
Starbucks - Farmington
Starbucks - Southington
Steadman Photography
Millie Steel
Lorna Sterling
Laurie Stickle
Richard and Jayne Stocker
Donna Storms
William and Angela Stortz
Sharon and Rodger Stotz
Deborah and Raymond Strelau
Katie Sweet and Judd Hoffman
Patricia Switzer
Gregory Szydlo
John and Ann Taylor
Pat and Fowler Terry
Terryville Lions Club
The Dow Chemical Company
The Walt Disney Company Foundation
Thomaston Savings Bank
James Thompson
Ruth Timme
Tollman Spring Co., Inc.
Gerald and Marsha Tomlinson
Betsy Tooker
Jeffrey and Ginny Torreso
Daniel Toscano
Town of Burlington 5K Run/Walk
Ann Tracy
William and Kim Tracy
Tracy Driscoll Insurance & Financial Services
Travelers
Donna Tuninsky
Russell and Marianne Tuverson
Estate of Elizabeth Tyrrell
U.S. Trust Bank of America Private Wealth Management
UBS Matching Gift Program
Ultimate Companies, Inc.
United Bank
Leonard Valentino
Karen Varasconi
Janet Vater
John and Julia Vecchitto
Roland Vicedomini
Victoria Rose Biondi, MD & Associates/Briar Rosa
Village Mortgage Company
Valerie Vitale

Allison Wadonski
Edward and Lisa Wahlberg
John and Rhonda Walker
Anne Walluk
Walmart Store #2719
Walmart Store #2897
Walmart Store #2899
Walmart Store #3548
Brian and Maria Walsh
Timothy and Mary Walsh
Burton Warner
Darlene Warner
Jon Warner
Warner Theater
Christine and James Wartonick
Darlene Wartonick
Deborah Wartonick
Lori Wartonick
Michael Wasta
Michael and Shelley Watts
Webster Bank
Wells Fargo Advisors
Sandra West
Marian Whitcomb
June White
Cindy Whitman
Pamela and John Wholley
William and Thomas Delfino, LLC
Judson Williams
Robert and Janet Williamson
Theresa and John Wilmarth
Lisa Wilson-Foley
Wine Cellars 4
Linda and Tad Winterbottom
Bridget Wiseman
Troy Wiseman
Mary and Ronald Wollenberg
Women's Turf
Gene and Jean Woolverton
Christopher Wright
Joel Wulff
Craig and Barbara Yarde
Yarde Metals, Inc.
Mark and Lorna Zammett
Carolyn and Mark Ziogas
David and Stephanie Zomick

GIFTS WERE MADE IN HONOR OF:

Donna Borysewicz
Amy Brennan
Gerry Burns
The Burton Family
Heather Carr
Church Friends
Dr. Armann Ciccarelli and Dr. Valerie Vitale
Dorothy Ciechoski
Chelsea Cragin-Gustofson
Michelle Deeb
Joyce DeFelippi
Bryan DeManbey and Rebekah VanDemar
Gloria DiFrancesco
Ellen Donohue
Darlene Estela
Christina Flaherty's 2012-2013 Class and Parent Volunteers

Mary Gibbons
Ginger Glovna
Asuncion Gomez
Barbara Hackman Franklin
Har-Bur Middle School Garnet Team
Har-Bur Middle School Emerald Team
Har-Bur Middle School Instrumental Department
Har-Bur Middle School Sapphire Team
Har-Bur Middle School Silver Team
Jenna L.S. Hasskarl
Tori Hickerson
Stephanie and Thomas Hunt
John and Kirk from Knife Forums
Nathan, Christopher and John King
Lake Garda School Staff
Shannon Larkin
The Lazorik Family
John and Cheryl Lazorik
Judie Lodovico
Karen Maher
Robert S. Merriman
Nevada Merriman & Josh Elias' Wedding
James Michel
MSCF Staff
Ann Palmisano
Mark Peterson
Mary Peterson's Birthday
Betty Radcliff
Ron Sadecki
Susan Sadecki
John and Susan Scarritt
John-David and Jennifer Scarritt
Janet Schwartz
Patti Smaldone
Coledyn Thompson
Peter Tunila
Christine Wartonick
Marian B. Whitcomb
Heather and Dudley Willis
Mr. and Mrs. Wysowski

2013 GIFTS IN KIND

Robert Bosco
David England
Garrett Printing & Graphics Inc.
Greater Bristol RSVP
Kim Lewis
Ashley Lodovico
Dawn Nielsen
Sharon Nocera
Paladin Commercial Printers, LLC
Deb Polydys - Strategic Management Resources, Inc.
Premier Signs
Jeanne Radcliff
Ron Sadecki
Jennifer Scully
Skip and Susan Scully
Thomaston Savings Bank
TLC Limousine
Tunxis Community College/Tunxis@Bristol
Kim Villanti - Finelines Graphic Design

► 2013 OFFICERS, DIRECTORS & COMMITTEES

ASSET DEVELOPMENT COMMITTEE

David England, *Chair*
Todd Burton
Barbara Fontaine
Kim Lewis
Tom Monahan
Dawn Nielson
Mark Peterson
Paul Rochford
Janis L. Neri, *ex officio*
Susan D. Sadecki, *ex officio*

AUDIT COMMITTEE

William J. Tracy, Jr., *Chair*
Robert M. Caiaze
Dennis Cleary
Val Dumais
Jackie Furniss
Dan A. Migliaro
David J. Preleski
Janis L. Neri, *ex officio*
Susan D. Sadecki, *ex officio*

BOARD DEVELOPMENT COMMITTEE

William J. Tracy, Jr., *Chair*
Pattie Dunn
David England
John A. Letizia
John D. Scarritt
Janis L. Neri, *ex officio*
Susan D. Sadecki, *ex officio*

BRADLEY HENRY BARNES & LEILA UPSON BARNES MEMORIAL TRUST ADVISORY COMMITTEE

William J. Tracy, Jr., *Chair*
Sherwood Anderson
Daniel Daigle
Valerie DePaolo
Mary Ellen Hobson
John A. Letizia
Barry Thompson
Janis L. Neri, *ex officio*
Susan D. Sadecki, *ex officio*
John E. Smith, *ex officio*

BY LAWS COMMITTEE

Valerie A. DePaolo, *Chair*
John D. Scarritt
Janis L. Neri, *ex officio*
Susan D. Sadecki, *ex officio*

DISTRIBUTION COMMITTEE

Anita Hamzy, *Chair*
Mark Peterson, *Vice-Chair*
Beverly Bobroske
Sia Bauer
Todd Burton
Kristine Dargenio
Arthur P. Funk, Jr.
Michael Ganem
Kathy Reinhard
Daniel J. LaPorte
John A. Letizia
Kim Lewis
Anthony Mattioli
Jacqueline M. Merchant
Jerald Rafaniello
Anthony Russo
Barry Thompson
Jeffrey Sonenstein
Jarre B. Betts, *ex officio*
Janis L. Neri, *ex officio*
Susan D. Sadecki, *ex officio*

FINANCE COMMITTEE

John A. Letizia, *Chair*
Dave Aldieri
Michael Brault
David Maikowski
Jacqueline Merchant
John D. Scarritt
Janis L. Neri, *ex officio*
Susan D. Sadecki, *ex officio*

INVESTMENT COMMITTEE

Robert M. Caiaze, *Chair*
John D. Scarritt, *Vice-Chair*
John Letizia
Sanford Mazeau
William Micari
Joseph Noto
William J. Tracy, Jr.
Janis L. Neri, *ex officio*
Susan D. Sadecki, *ex officio*

MONEY IN MOTION COMMITTEE

Michael Brault, *Chair*
Val E. Dumais
Patricia B. Dunn
David England
Marguerite P. Fletcher
Arthur P. Funk, Jr.
Jarre B. Betts, *ex officio*
Janis L. Neri, *ex officio*
Susan D. Sadecki, *ex officio*

PERSONNEL COMMITTEE

Patricia B. Dunn, *Chair*
Elaine Couture
Marguerite Fletcher
Jacqueline Merchant
Janis L. Neri, *ex officio*
Susan D. Sadecki, *ex officio*

SCHOLARSHIP COMMITTEE

Patricia B. Dunn, *Chair*
David England, *Vice-Chair*
Lisa Aiudi
David Aldieri
Sherwood Anderson
Nancy Blum
Debra Caruso
Elizabeth Dumont
Marguerite P. Fletcher
Phil Fowler
Jennifer Giacomini
Sanita Gingras
Don Goranson
Mary Ellen Hobson
Katie Hullstrunk
Daniel J. LaPorte
Nancy Mattioli
Edward Miller
Karen Murphy
Mark Peterson
Robyn Poulos
Jeff Sonenstein
Karen Varasconi
Jarre B. Betts, *ex officio*
Janis L. Neri, *ex officio*
Susan D. Sadecki, *ex officio*

2013 OFFICERS AND DIRECTORS

Janis L. Neri, *Chairman of the Board*
John A. Letizia, *Vice-Chair*
Robert M. Caiaze, *Secretary*
John D. Scarritt, *Treasurer*
William J. Tracy, Jr., *Past Board Chair*
Susan D. Sadecki, *President & CEO*
David J. Aldieri
Michael Brault
Todd Burton
Kristine J. Dargenio
Valerie A. DePaolo
Val E. Dumais
Patricia B. Dunn
David C. England
Marguerite P. Fletcher
Barbara Fontaine
Arthur P. Funk, Jr.
Anita Hamzy
Daniel J. LaPorte
Mark Peterson
Jeffrey Sonenstein

FOUNDERS

Sherwood Anderson
Carlyle F. Barnes
Thomas O. Barnes
Delores Capers
Ann Clark
Terry B. Fletcher
Edward P. Lorenson
Robert S. Merriman
David J. Preleski
Jeanne E. Radcliff
John E. Smith
Christopher Ziogas

2013 STAFF

Susan D. Sadecki
President & CEO
Jarre B. Betts
Director of Programs and Community Relations
Nicole Downes
Accountant
Samantha R. Rajotte
Communications Manager

► The Main Street Community Foundation welcomes volunteers from our local communities to serve as committee members. If interested, please contact us.



The Main Street Community Foundation is a Member of the Council on Foundations and is confirmed in Compliance with National Standards for U.S. Community Foundations

► FINANCIAL STATEMENTS

CONSOLIDATED STATEMENT OF FINANCIAL POSITION

ASSETS	December 31, 2013	December 31, 2012
Cash and equivalents	\$ 1,299,496	\$ 3,899,173
Investments	31,474,516	24,184,050
Cash held in Collateral Account	300,135	-
Administrative Fees Receivable	1,834	-
Pledges Receivable	25,500	49,638
Prepaid expenses	585	561
Furniture and equipment, net of depreciation	5,513	7,788
Total assets	<u>\$ 33,107,579</u>	<u>\$ 28,141,210</u>
LIABILITIES AND NET ASSETS		
Accounts payable and accrued expenses	\$ 524	\$ 3,268
Grants payable	661,646	57,533
Agency endowments	2,803,568	2,560,621
Total liabilities	<u>\$ 3,465,738</u>	<u>\$ 2,621,422</u>
Net assets	<u>\$ 29,641,841</u>	<u>\$ 25,519,788</u>
Total liabilities and net assets	<u>\$ 33,107,579</u>	<u>\$ 28,141,210</u>

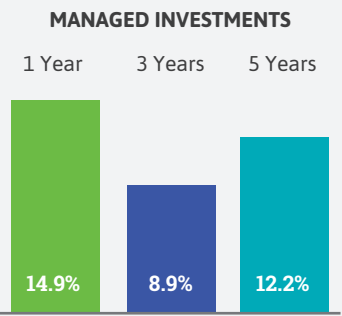
CONSOLIDATED STATEMENT OF ACTIVITIES

SUPPORT AND REVENUES*	December 31, 2013	December 31, 2012
Gifts and contributions	\$ 1,767,419	\$ 602,552
Interest and dividend income	684,298	634,517
Other income	103,085	83,593
Investment gains/(losses)	3,263,352	1,639,661
Total support and revenues	<u>\$ 5,818,154</u>	<u>\$ 2,960,323</u>
GRANTS AND EXPENSES		
Grants	\$ 1,019,388	\$ 735,604
Scholarships	103,577	97,993
Other expenses	165,988	64,929
Operating expenses	407,148	399,478
Total grants and expenses	<u>\$ 1,696,101</u>	<u>\$ 1,298,003</u>
Change in net assets	\$ 4,122,053	\$ 1,662,320
Net assets at beginning of year	\$ 25,519,788	\$ 23,857,468
Total net assets at end of period	<u>\$ 29,641,841</u>	<u>\$ 25,519,788</u>

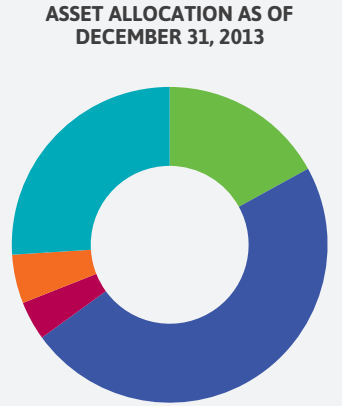
*net of agency fund activity

HISTORICAL INVESTMENT PERFORMANCE

Returns as of December 31, 2013, reported net of investment management fees:



HOW YOUR COMMUNITY'S ENDOWMENT IS INVESTED



- International Equities 17%
- Domestic Equities 48%
- Cash 4%
- Alternatives 5%
- Fixed Income 26%

Community Foundation resources are managed differently than personal assets and retirement accounts. They are also managed differently than the short-term cash a nonprofit or business invests to cover payroll, rent, program delivery, or inventory. Set and monitored by our Investment Committee, our asset allocation plan guides us to preserve and grow our endowments in a manner that reduces exposure to market volatility through diversification within risk managed asset classes.

Main Street



COMMUNITY
FOUNDATION

200 Main Street
P.O. Box 2702
Bristol, CT 06011-2702



NONPROFIT
ORGANIZATION
U.S. POSTAGE
PAID
HARTFORD, CT
PERMIT # 3344



The Main Street Community Foundation is a Member of the Council on Foundations and is confirmed in Compliance with National Standards for U.S. Community Foundations



Tel. 860.583.6363 | Fax 860.589.1252
www.mainstreetfoundation.org

